

Book No. _____

Instrument No. _____

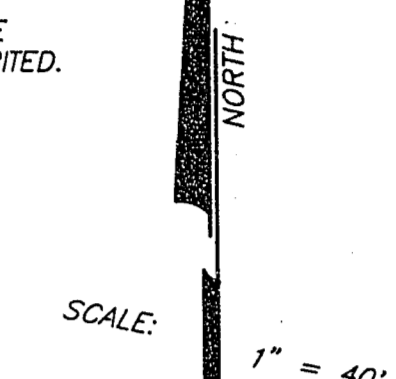
FINAL MAP OF SUN CITY LAS VEGAS - UNIT NO. 37 AT SUMMERLIN

A PLANNED DEVELOPMENT AND COMMON INTEREST COMMUNITY
BEING A SUBDIVISION OF PORTIONS OF SECTION 13, TOWNSHIP 20 SOUTH, RANGE 59 EAST AND
SECTION 18, TOWNSHIP 20 SOUTH, RANGE 60 EAST, M.D.M., CITY OF LAS VEGAS, CLARK COUNTY, NEVADA

NOTE:
FOR SIDE PROPERTY LINES: SET CONCRETE
NAIL AND TIN IN THE REAR WALL ON THE
PROPERTY LINE PROJECTED. SET SAWCUT
IN THE BACK OF CURB AT THE FRONT OF
THE LOT ON THE PROPERTY LINE
PROJECTED.

SET 2"x2" HUB AND TACK AT LOT CORNERS
WHERE THERE IS NO BLOCK WALL.

NOTE:
DIRECT VEHICULAR ACCESS TO CHEYENNE
AVENUE FROM ABUTTING LOTS IS PROHIBITED.

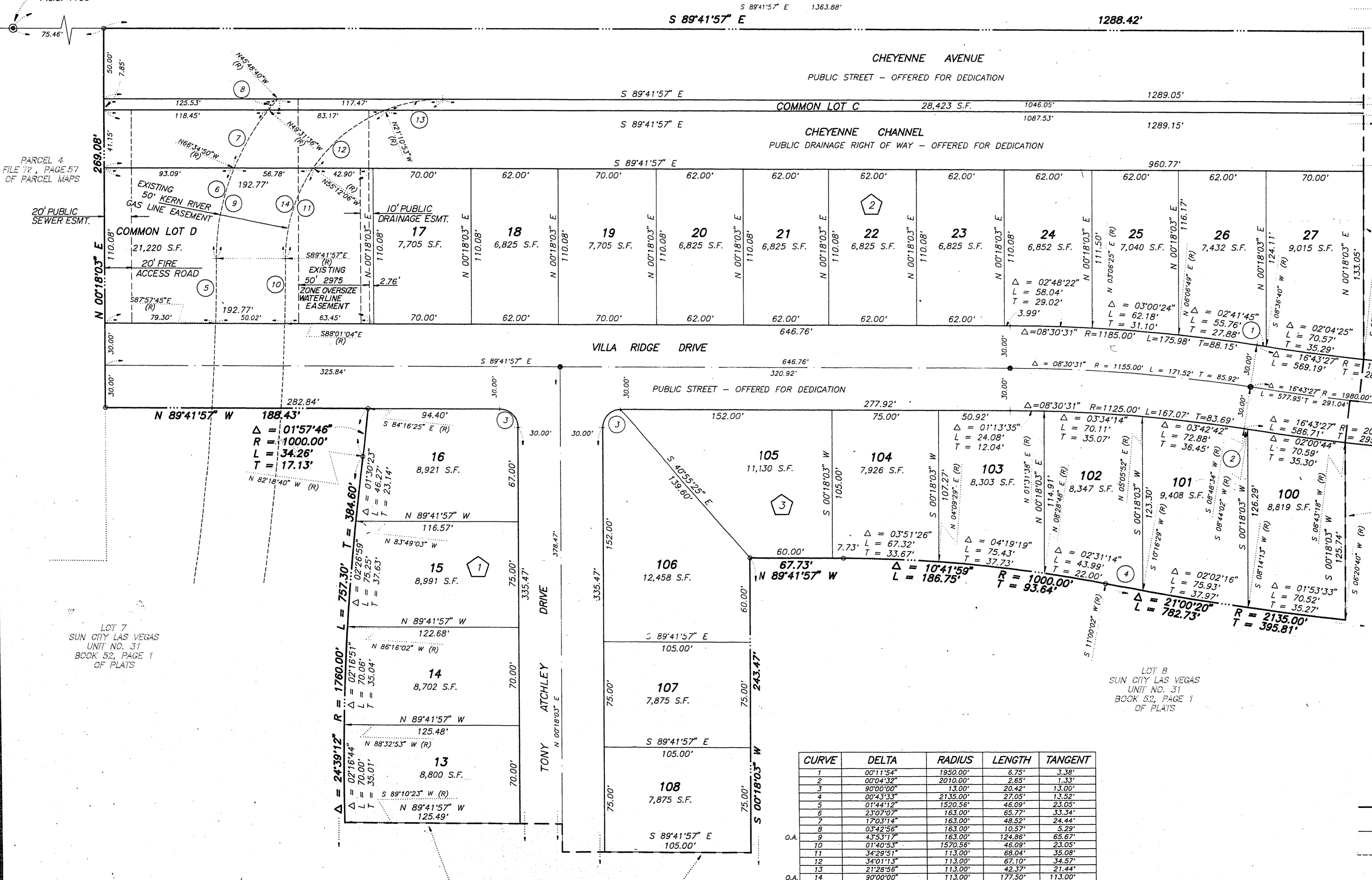


E 1/16
FOUND REBAR AND ALCAP
P.L.S. 7755

PARCEL 4
FILE 72, PAGE 57
OF PARCEL MAPS
20' PUBLIC
SEWER ESMT.

LOT 7
SUN CITY LAS VEGAS
UNIT NO. 37
BOOK 52, PAGE 1
OF PLATS

LOT 8
SUN CITY LAS VEGAS
UNIT NO. 37
BOOK 52, PAGE 1
OF PLATS



SEE SHEET 2 FOR
KEY MAP AND
BASIS OF BEARING

MATCH LINE - SEE SHEET 5 OF 8

MATCH LINE - SEE SHEET 7 OF 8

- LEGEND**
- SET 5/8" REBAR AND ALUM. CAP STAMPED P.L.S. 7755 W/ ALUMINIUM CAP TIES IN TOP OF CURB (UNLESS OTHERWISE NOTED)
 - ⊙ FOUND MONUMENTATION AS SHOWN AND DESCRIBED
 - SET MONUMENTATION PER N.R.S. 278.371
 - 108 LOT NUMBER
TOTAL RESIDENTIAL LOTS = 120
COMMON LOTS IN SUBDIVISION = 8
 - ③ BLOCK NUMBER
 - ④ CURVE NUMBER
 - SUBDIVISION BOUNDARY LINE
 - STREET CENTERLINE
 - - - - - EASEMENT LINE

CURVE	DELTA	RADIUS	LENGTH	TANGENT
1	00°11'54"	1950.00'	6.75'	3.38'
2	00°04'32"	2010.00'	2.65'	1.33'
3	00°00'00"	13.00'	0.42'	0.21'
4	00°43'33"	2135.00'	27.05'	13.52'
5	01°44'12"	1520.56'	46.09'	23.05'
6	23°07'07"	163.00'	65.77'	33.34'
7	17°03'14"	163.00'	48.52'	24.44'
8	03°42'56"	163.00'	10.57'	5.29'
9	43°53'17"	163.00'	124.86'	65.67'
10	01°40'53"	1570.56'	48.09'	23.05'
11	34°29'51"	113.00'	69.84'	35.08'
12	34°01'13"	113.00'	67.10'	34.57'
13	21°28'56"	113.00'	42.37'	21.44'
14	00°00'00"	113.00'	177.50'	113.00'