

FINAL MAP OF SUN CITY LAS VEGAS - UNIT NO. 37 AT SUMMERLIN

A PLANNED DEVELOPMENT AND COMMON INTEREST COMMUNITY
BEING A SUBDIVISION OF PORTIONS OF SECTION 13, TOWNSHIP 20 SOUTH, RANGE 59 EAST AND
SECTION 18, TOWNSHIP 20 SOUTH, RANGE 60 EAST, M.D.M., CITY OF LAS VEGAS, CLARK COUNTY, NEVADA

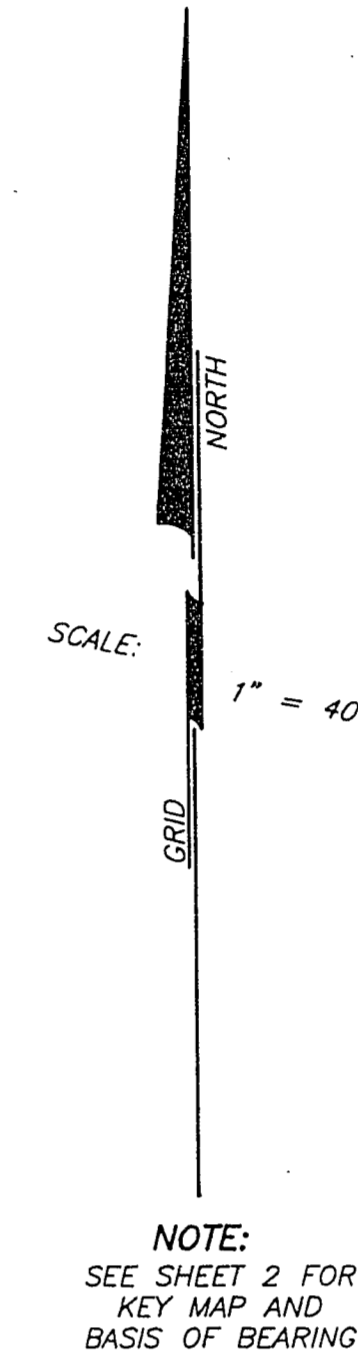
NOTE:

FOR SIDE PROPERTY LINES: SET CONCRETE NAIL AND TIN IN THE REAR WALL ON THE PROPERTY LINE PROJECTED. SET SAWCUT IN THE BACK OF CURB AT THE FRONT OF THE LOT ON THE PROPERTY LINE PROJECTED.

SET 2"x2" HUB AND TACK AT LOT CORNERS WHERE THERE IS NO BLOCK WALL.

NOTE:

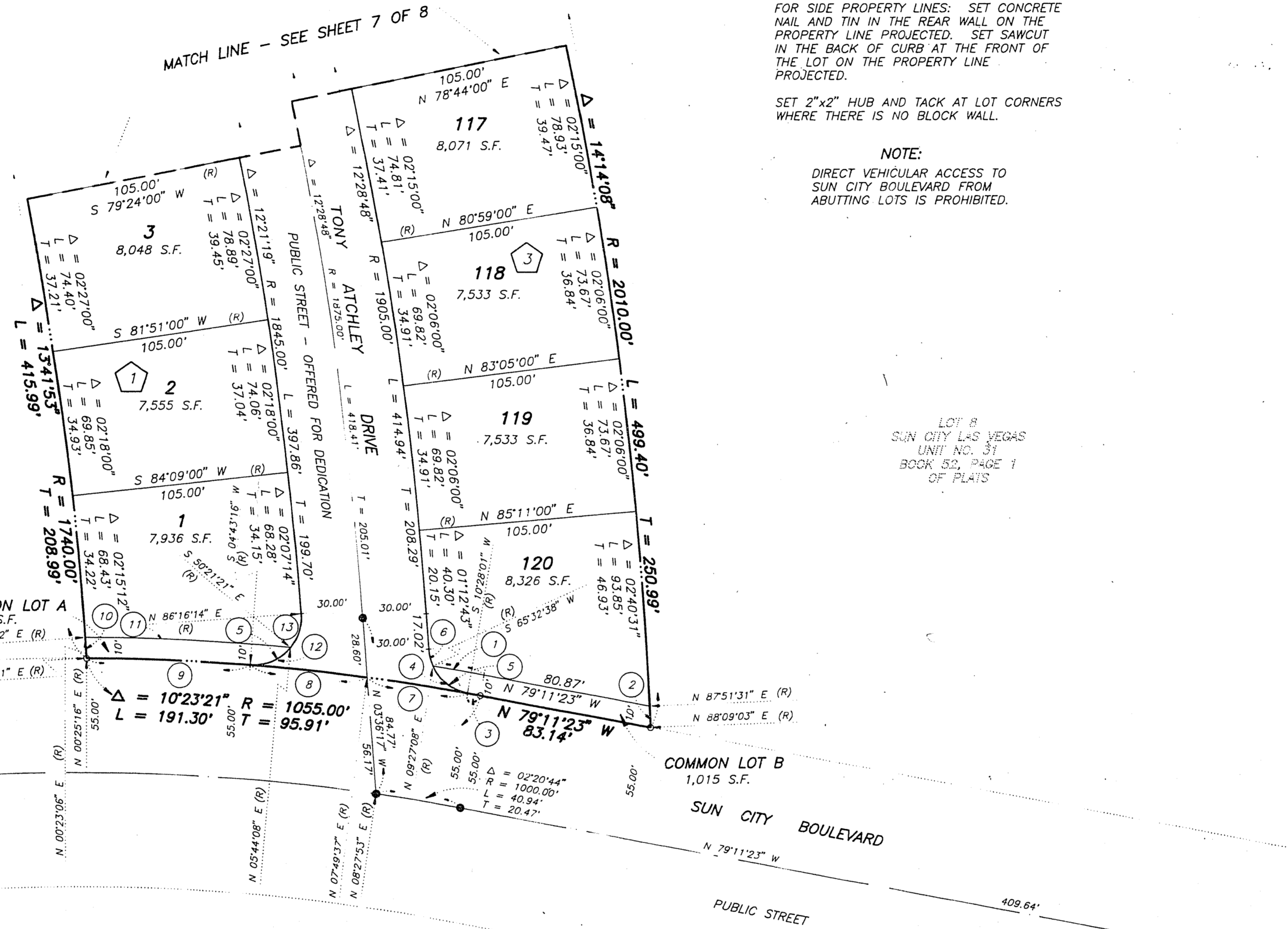
DIRECT VEHICULAR ACCESS TO SUN CITY BOULEVARD FROM ABUTTING LOTS IS PROHIBITED.



LOT 7
SUN CITY LAS VEGAS
UNIT NO. 31
BOOK 52, PAGE 1
OF PLATS

LOT 8
SUN CITY LAS VEGAS
UNIT NO. 31
BOOK 52, PAGE 1
OF PLATS

NOTE:
SEE SHEET 2 FOR
KEY MAP AND
BASIS OF BEARING



LEGEND

- SET 5/8" REBAR AND ALUM. CAP STAMPED P.L.S. 7755 W/ ALUMINIUM CAP TIES IN TOP OF CURB (UNLESS OTHERWISE NOTED)
- SET MONUMENTATION PER N.R.S. 278.371
- 120 LOT NUMBER
TOTAL RESIDENTIAL LOTS = 120
COMMON LOTS IN SUBDIVISION = 8
- ③ BLOCK NUMBER
- ⑬ CURVE NUMBER
- SUBDIVISION BOUNDARY LINE
- STREET CENTERLINE

CURVE	DELTA	RADIUS	LENGTH	TANGENT
1	01°21'29"	1065.00'	25.24'	12.62'
2	00°17'32"	2010.00'	10.25'	5.13'
3	02°20'36"	1055.00'	6.32'	3.16'
4	75°55'42"	23.00'	30.48'	17.95'
5	55°04'37"	23.00'	22.11'	11.99'
6	20°51'05"	23.00'	8.37'	4.23'
7	02°38'24"	1055.00'	48.61'	24.31'
8	03°06'21"	1055.00'	57.19'	28.60'
9	04°18'00"	1055.00'	79.18'	39.61'
10	00°19'49"	1740.00'	10.03'	5.02'
11	05°21'02"	1065.00'	99.45'	49.76'
12	98°27'02"	23.00'	39.52'	26.67'
13	43°22'25"	23.00'	17.41'	9.15'