

# SUN CITY LAS VEGAS - UNIT NO. 36

FINAL MAP OF

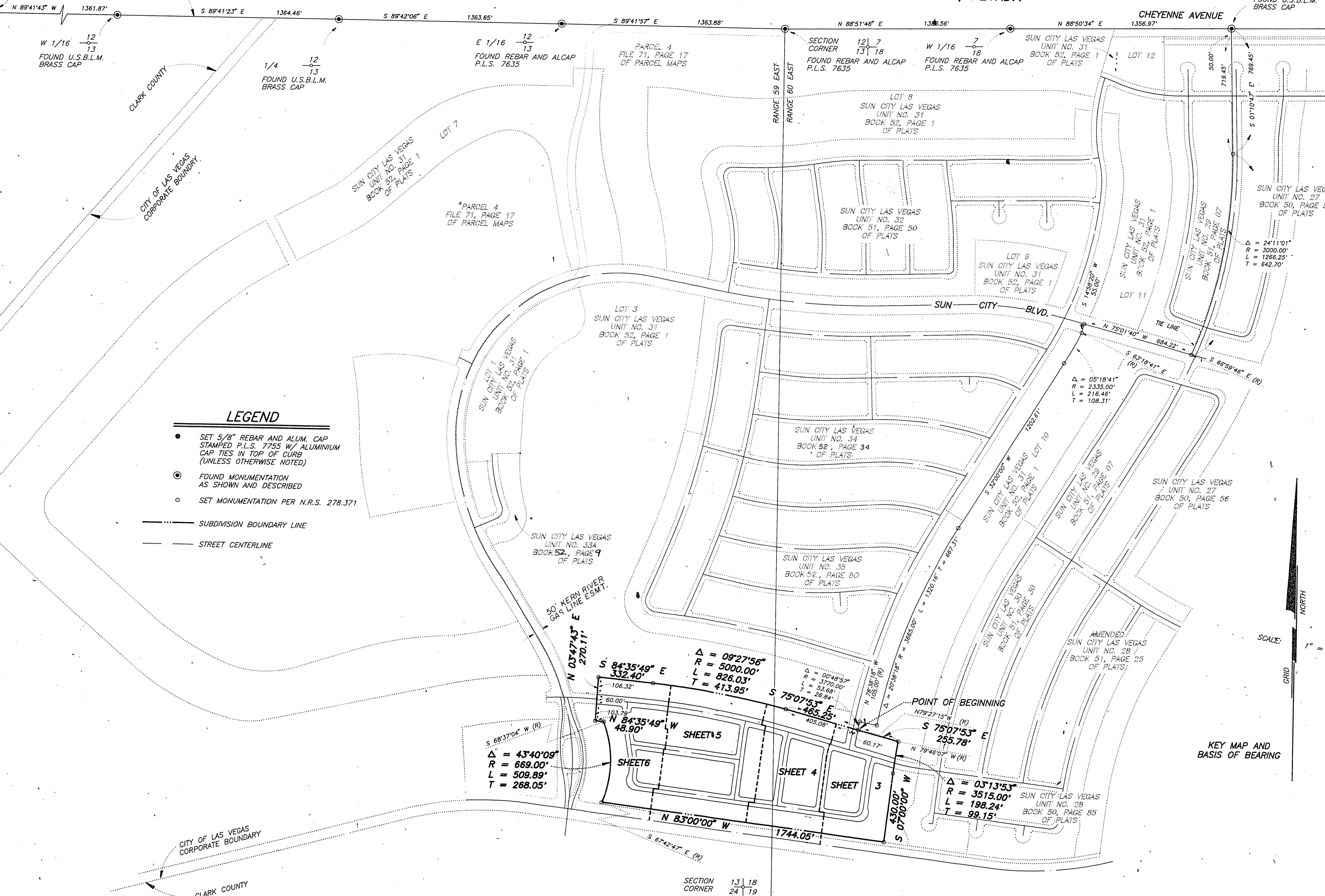
AT SUMMERLIN  
A PLANNED DEVELOPMENT

BEING A SUBDIVISION OF A PORTION OF SECTION 13, TOWNSHIP 20 SOUTH, RANGE 59 EAST AND SECTION 18, TOWNSHIP 20 SOUTH, RANGE 60 EAST, M.D.M., CITY OF LAS VEGAS, CLARK COUNTY, NEVADA

SECTION CORNER 11 12  
14 13  
FOUND U.S.B.L.M. BRASS CAP

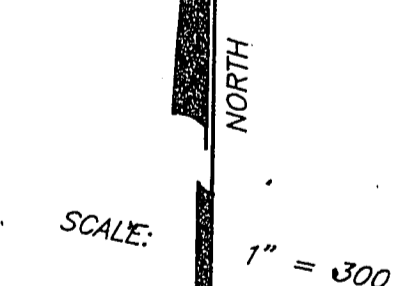
BASIS OF BEARING  
FILE 53, PAGE 3  
OF SURVEYS

1/4 7  
18  
FOUND U.S.B.L.M. BRASS CAP



### LEGEND

- SET 5/8" REBAR AND ALUM. CAP STAMPED P.L.S. 7755 W/ ALUMINIUM CAP TIES IN TOP OF CURB (UNLESS OTHERWISE NOTED)
- ⊙ FOUND MONUMENTATION AS SHOWN AND DESCRIBED
- SET MONUMENTATION PER N.R.S. 278.371
- SUBDIVISION BOUNDARY LINE
- - - STREET CENTERLINE



KEY MAP AND BASIS OF BEARING