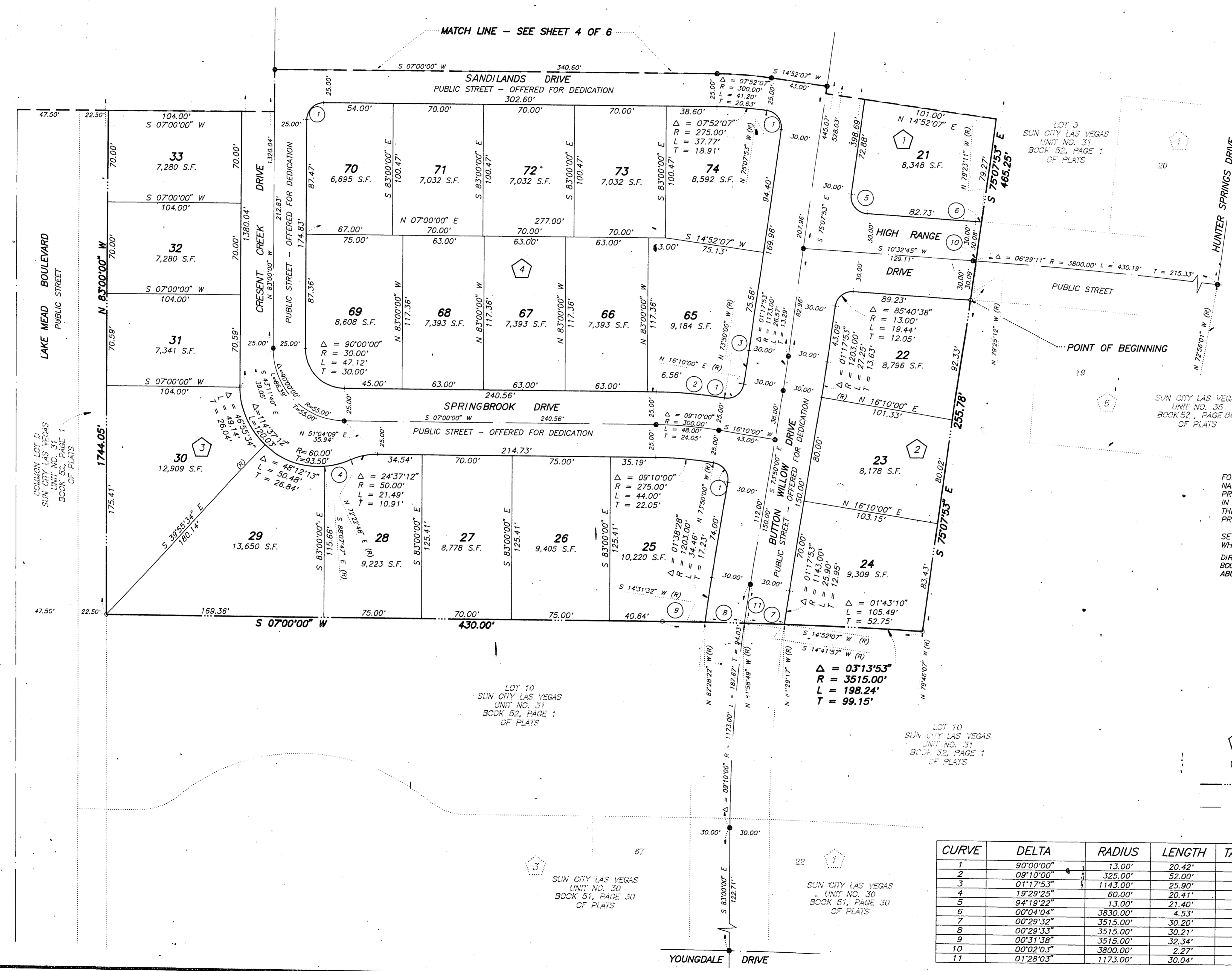
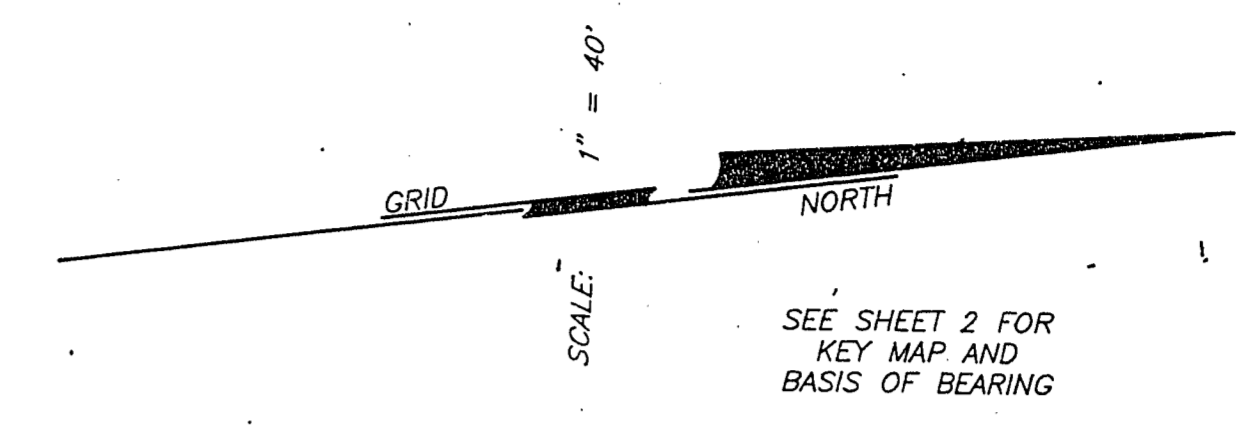


# FINAL MAP OF SUN CITY LAS VEGAS - UNIT NO. 36 AT SUMMERLIN A PLANNED DEVELOPMENT

BEING A SUBDIVISION OF A PORTION OF SECTION 13, TOWNSHIP 20 SOUTH, RANGE 59 EAST AND SECTION 18, TOWNSHIP 20 SOUTH, RANGE 60 EAST, M.D.M., CITY OF LAS VEGAS, CLARK COUNTY, NEVADA



**NOTE:**  
FOR SIDE PROPERTY LINES: SET CONCRETE NAIL AND TIN IN THE REAR WALL ON THE PROPERTY LINE PROJECTED. SET SAWCUT IN THE BACK OF CURB AT THE FRONT OF THE LOT ON THE PROPERTY LINE PROJECTED.  
SET 2"x2" HUB AND TACK AT LOT CORNERS WHERE THERE IS NO BLOCK WALL.  
DIRECT VEHICULAR ACCESS TO LAKE MEAD BOULEVARD THROUGH COMMON AREA FROM ADJUTING LOTS IS PROHIBITED.

**LEGEND**

- SET 5/8" REBAR AND ALUM. CAP STAMPED P.L.S. 7755 W/ ALUMINIUM CAP TIES IN TOP OF CURB (UNLESS OTHERWISE NOTED)
- SET MONUMENTATION PER N.R.S. 278.371
- 74 LOT NUMBER  
TOTAL RESIDENTIAL LOTS = 132  
COMMON LOTS IN SUBDIVISION = 1
- 4 BLOCK NUMBER
- 10 CURVE NUMBER
- SUBDIVISION BOUNDARY LINE
- STREET CENTERLINE

CURVE	DELTA	RADIUS	LENGTH	TANGENT
1	90°00'00"	13.00'	20.42'	13.00'
2	09°10'00"	325.00'	52.00'	26.05'
3	01°17'53"	1143.00'	25.90'	12.95'
4	19°29'25"	60.00'	20.41'	10.30'
5	94°19'22"	13.00'	21.40'	14.02'
6	00°04'04"	3830.00'	4.53'	2.27'
7	00°29'32"	3515.00'	30.20'	15.10'
8	00°29'33"	3515.00'	30.21'	15.11'
9	00°31'38"	3515.00'	32.34'	16.17'
10	00°02'03"	3800.00'	2.27'	1.13'
11	01°28'03"	1173.00'	30.04'	15.02'