

29-12-195

Book No. 920526

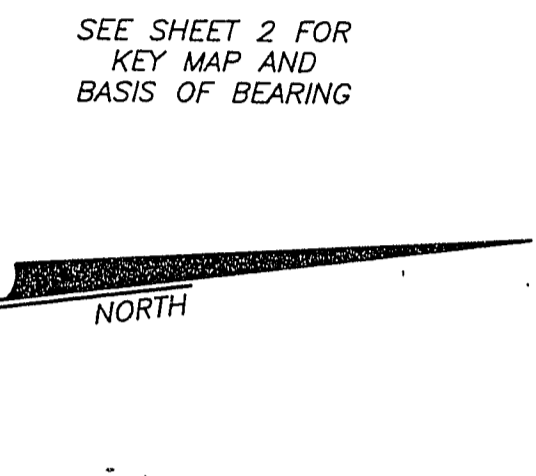
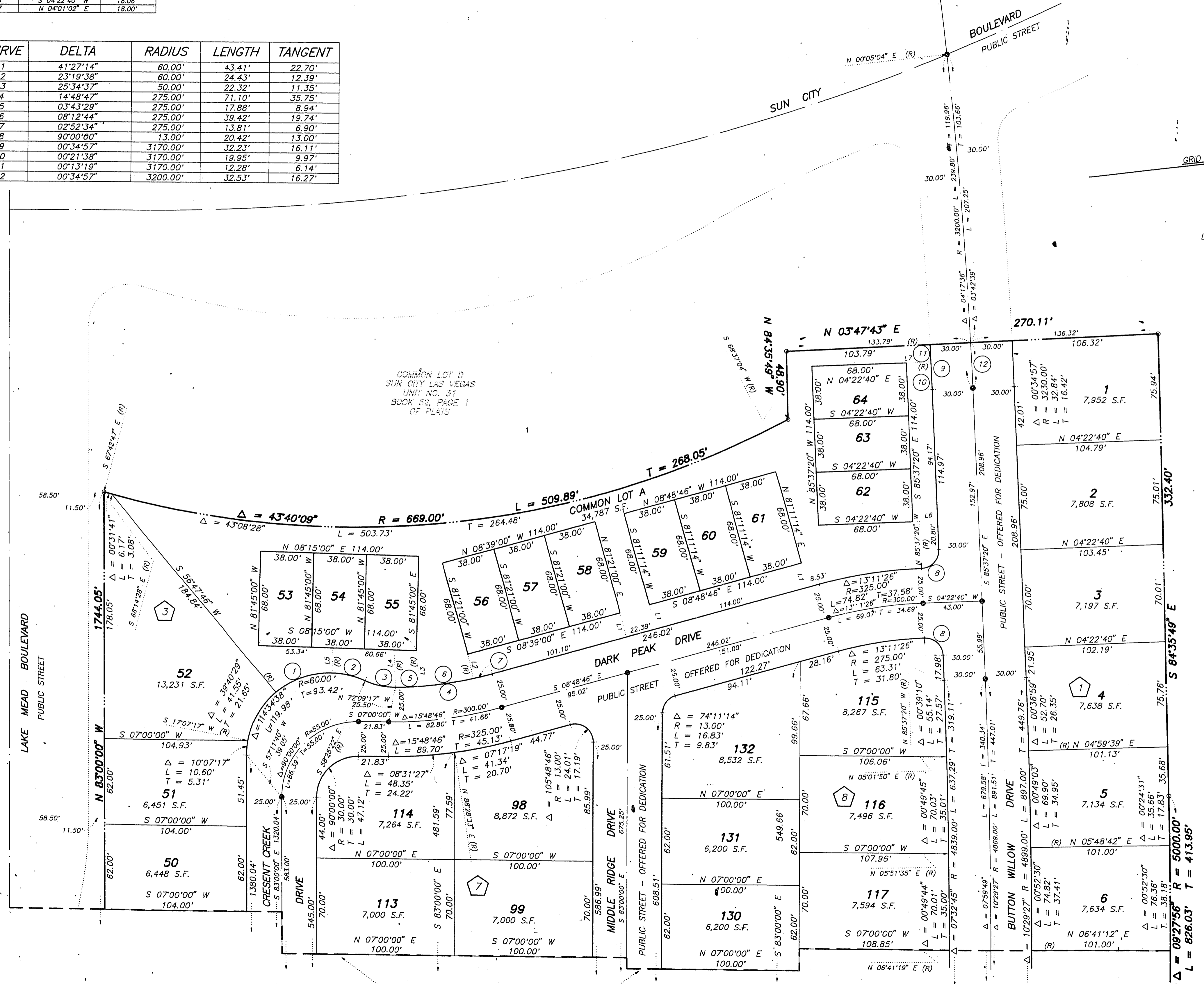
Instrument No. 00782

FINAL MAP OF SUN CITY LAS VEGAS - UNIT NO. 36 AT SUMMERLIN A PLANNED DEVELOPMENT

BEING A SUBDIVISION OF A PORTION OF SECTION 13, TOWNSHIP 20 SOUTH, RANGE 59 EAST AND SECTION 18, TOWNSHIP 20 SOUTH, RANGE 60 EAST, M.D.M., CITY OF LAS VEGAS, CLARK COUNTY, NEVADA

LINE	BEARING	DISTANCE
L1	S 81°11'14" W	18.00'
L2	N 84°03'48" E	18.00'
L3	S 87°43'28" E	25.81'
L4	S 83°59'59" E	
L5	N 81°45'00" W	18.00'
L6	S 04°22'40" W	18.06'
L7	N 04°01'02" E	18.00'

CURVE	DELTA	RADIUS	LENGTH	TANGENT
1	41°27'14"	60.00'	43.41'	22.70'
2	23°19'38"	60.00'	24.43'	12.39'
3	25°34'37"	50.00'	22.32'	11.35'
4	14°48'47"	275.00'	71.10'	35.75'
5	03°43'29"	275.00'	17.88'	8.94'
6	08°12'44"	275.00'	39.42'	19.74'
7	02°52'34"	275.00'	13.81'	6.90'
8	90°00'00"	13.00'	20.42'	13.00'
9	00°34'57"	3170.00'	32.23'	16.11'
10	00°21'13"	3170.00'	19.95'	9.97'
11	00°13'19"	3170.00'	12.28'	6.14'
12	00°34'57"	3200.00'	32.53'	16.27'



NOTE:
LOTS 53 THROUGH 64, INCLUSIVE
CONTAIN 2,584 sf EACH.

LOT 3
SUN CITY LAS VEGAS
UNIT NO. 31
BOOK 52, PAGE 1
OF PLATS

NOTE:
FOR SIDE PROPERTY LINES: SET CONCRETE
NAIL AND TIN IN THE REAR WALL ON THE
PROPERTY LINE PROJECTED. SET SAWCUT
IN THE BACK OF CURB AT THE FRONT OF
THE LOT ON THE PROPERTY LINE
PROJECTED.
SET 2"x2" HUB AND TACK AT LOT CORNERS
WHERE THERE IS NO BLOCK WALL.
DIRECT VEHICULAR ACCESS TO LAKE MEAD
BOULEVARD THROUGH COMMON AREA FROM
ABUTTING LOTS IS PROHIBITED.

LEGEND

- SET 5/8" REBAR AND ALUM. CAP STAMPED P.L.S. 7755 W/ALUMINIUM CAP TIES IN TOP OF CURB (UNLESS OTHERWISE NOTED)
- SET MONUMENTATION PER N.R.S. 278.371
- 132 LOT NUMBER
TOTAL RESIDENTIAL LOTS = 132
COMMON LOTS IN SUBDIVISION = 1
- 8 BLOCK NUMBER
- 11 CURVE NUMBER
- L1 LINE SEGMENT NUMBER
- SUBDIVISION BOUNDARY LINE
- STREET CENTERLINE

MATCH LINE - SEE SHEET 5 OF 6