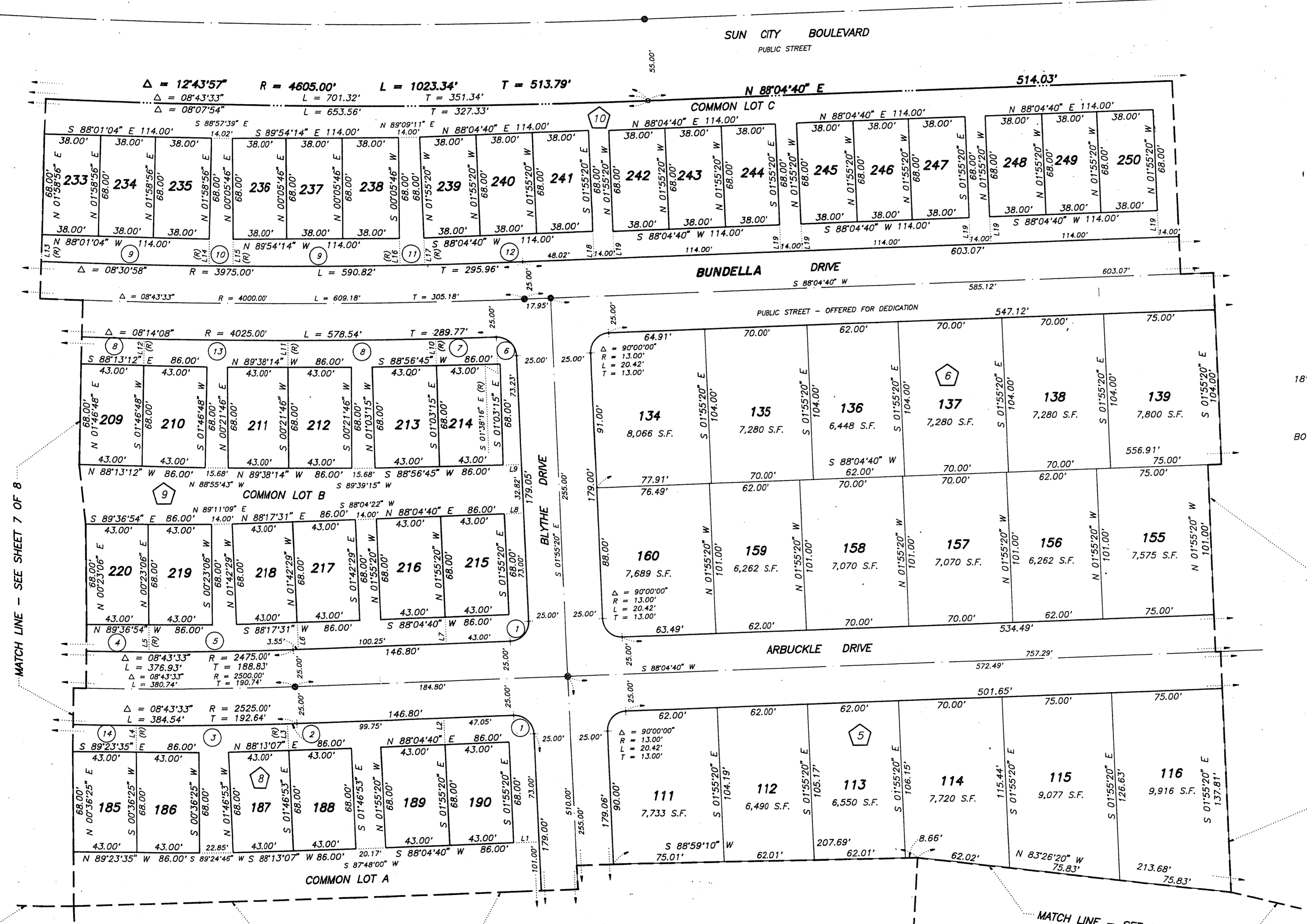


Book No. \_\_\_\_\_

Instrument No. \_\_\_\_\_

# FINAL MAP OF SUN CITY LAS VEGAS - UNIT NO. 34 AT SUMMERLIN A PLANNED DEVELOPMENT

BEING A SUBDIVISION OF A PORTION OF PARCEL 3 AS SHOWN BY MAP THEREOF ON FILE IN FILE 71, PAGE 17 OF PARCEL MAPS IN THE CLARK COUNTY RECORDER'S OFFICE, CLARK COUNTY, NEVADA, LYING WITHIN SECTION 13, TOWNSHIP 20 SOUTH, RANGE 59 EAST AND SECTION 18, TOWNSHIP 20 SOUTH, RANGE 60 EAST, M.D.M., CITY OF LAS VEGAS, CLARK COUNTY, NEVADA



**NOTE:**  
FOR SIDE PROPERTY LINES: SET CONCRETE NAIL AND TIN IN THE REAR WALL ON THE PROPERTY LINE PROJECTED. SET SAWCUT IN THE BACK OF CURB AT THE FRONT OF THE LOT ON THE PROPERTY LINE PROJECTED.

SET 2"x2" HUB AND TACK AT LOT CORNERS WHERE THERE IS NO BLOCK WALL.

SEE SHEET 2 FOR KEY MAP AND BASIS OF BEARING

SCALE: 1" = 40'

**NOTE:**  
LOTS 185 THROUGH 190, INCLUSIVE CONTAIN 2,924 SF EACH.  
LOTS 209 THROUGH 220, INCLUSIVE CONTAIN 2,924 SF EACH.  
LOTS 233 THROUGH 250, INCLUSIVE CONTAIN 2,584 SF EACH.

**NOTE:**  
MINIMUM BUILDING SETBACK 18' FRONT OF LOT AND 10' SIDE CORNER LOTS.

**NOTE:**  
DIRECT VEHICULAR ACCESS TO SUN CITY BOULEVARD FROM ADJACENT LOTS IS PROHIBITED.

### LEGEND

- SET 5/8" REBAR AND ALUM. CAP STAMPED P.I.S. 7755 W/ ALUMINUM CAP TIES IN TOP OF CURB (UNLESS OTHERWISE NOTED)
- SET MONUMENTATION PER N.R.S. 278.371
- 250 LOT NUMBER  
TOTAL RESIDENTIAL LOTS = 265  
COMMON LOTS IN SUBDIVISION = 5
- 10 BLOCK NUMBER
- 12 CURVE NUMBER
- L19 LINE SEGMENT NUMBER
- SUBDIVISION BOUNDARY LINE
- STREET CENTERLINE

MATCH LINE - SEE SHEET 7 OF 8

MATCH LINE - SEE SHEET 3 OF 8

MATCH LINE - SEE SHEET 8 OF 8

MATCH LINE - SEE SHEET 4 OF 8

LINE	BEARING	DISTANCE	LINE	BEARING	DISTANCE
1	N 88°04'40" E	17.05'	11	N 00°21'46" E	18.00'
2	S 01°55'20" E	18.00'	12	N 01°48'48" E	18.00'
3	S 01°48'53" E	18.00'	13	N 02°48'27" E	18.01'
4	S 00°36'25" W	18.00'	14	N 01°09'24" E	18.01'
5	N 00°23'06" E	18.39'	15	N 00°55'17" E	18.01'
6	N 01°55'20" W	18.16'	16	N 02°43'48" W	18.01'
7	N 01°55'20" W	18.00'	17	N 00°58'00" W	18.01'
8	S 88°04'40" W	13.00'	18	N 01°55'20" W	18.56'
9	S 88°04'40" W	12.24'	19	N 01°55'20" W	18.00'
10	N 01°03'15" W	18.00'			

CURVE	DELTA	RADIUS	LENGTH	TANGENT
1	90°00'00"	13.00'	20.42'	13.00'
2	00°06'27"	2525.00'	6.21'	3.10'
3	02°31'18"	2525.00'	105.25'	52.63'
4	02°29'00"	2475.00'	107.27'	53.64'
5	02°18'26"	2475.00'	99.66'	49.84'
6	88°42'58"	13.00'	20.36'	12.94'
7	00°35'01"	4025.00'	41.00'	20.49'
8	01°25'01"	4025.00'	99.54'	49.27'
9	01°39'03"	3975.00'	114.53'	57.27'
10	00°14'07"	3975.00'	16.32'	8.16'
11	00°14'14"	3975.00'	16.46'	8.23'
12	00°57'20"	3975.00'	66.29'	33.15'
13	01°25'02"	4025.00'	99.56'	49.28'
14	02°23'19"	2525.00'	105.27'	52.64'