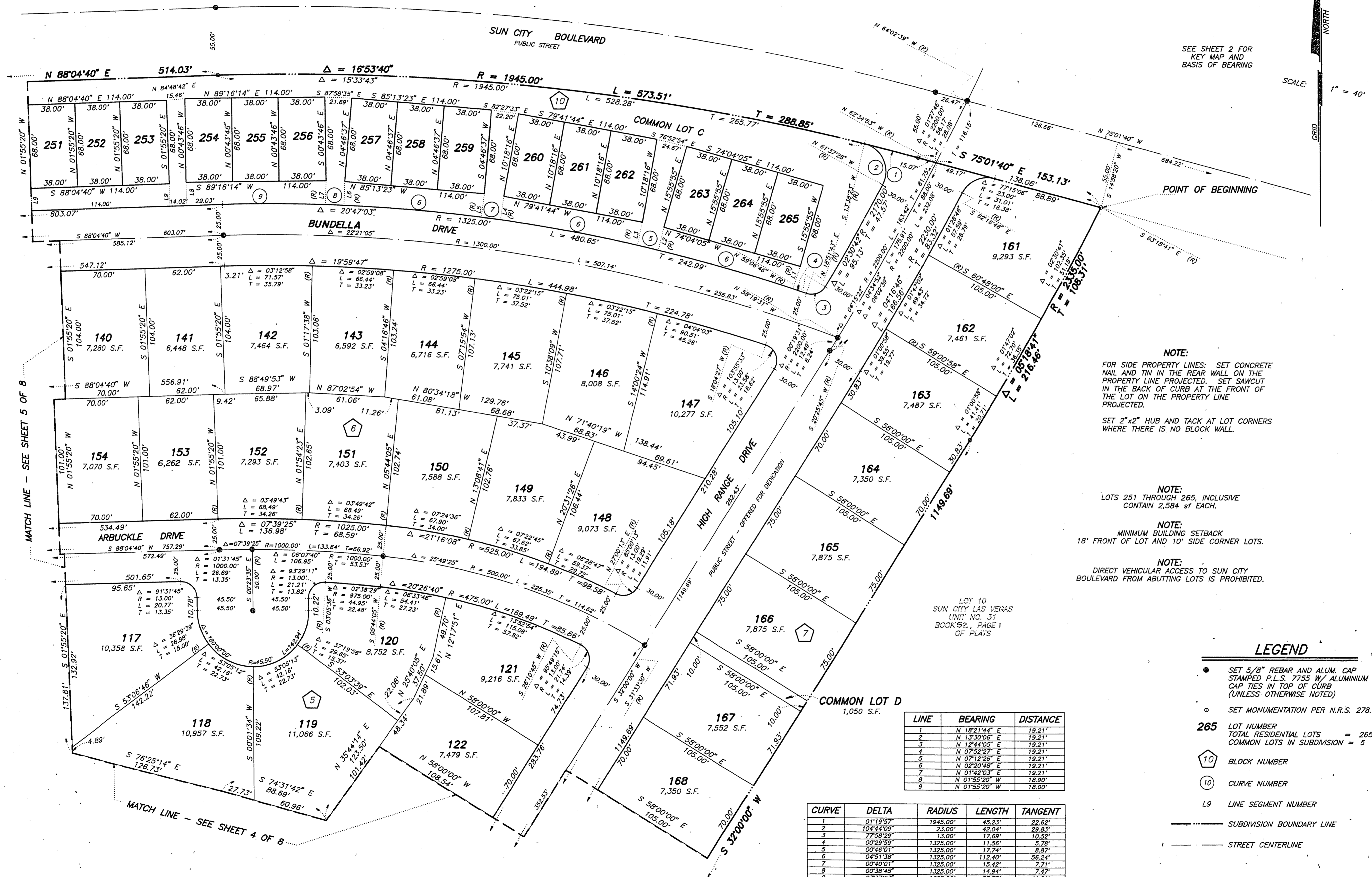


Book No. _____

Instrument No. _____

FINAL MAP OF SUN CITY LAS VEGAS - UNIT NO. 34 AT SUMMERLIN A PLANNED DEVELOPMENT

BEING A SUBDIVISION OF A PORTION OF PARCEL 3 AS SHOWN BY MAP THEREOF ON FILE IN FILE 71, PAGE 17 OF PARCEL MAPS IN THE CLARK COUNTY RECORDER'S OFFICE, CLARK COUNTY, NEVADA, LYING WITHIN SECTION 13, TOWNSHIP 20 SOUTH, RANGE 59 EAST AND SECTION 18, TOWNSHIP 20 SOUTH, RANGE 60 EAST, M.D.M., CITY OF LAS VEGAS, CLARK COUNTY, NEVADA



SEE SHEET 2 FOR
KEY MAP AND
BASIS OF BEARING

SCALE:
1" = 40'

NOTE:
FOR SIDE PROPERTY LINES: SET CONCRETE NAIL AND TIN IN THE REAR WALL ON THE PROPERTY LINE PROJECTED. SET SAWCUT IN THE BACK OF CURB AT THE FRONT OF THE LOT ON THE PROPERTY LINE PROJECTED.
SET 2"x2" HUB AND TACK AT LOT CORNERS WHERE THERE IS NO BLOCK WALL.

NOTE:
LOTS 251 THROUGH 265, INCLUSIVE CONTAIN 2,584 SF EACH.

NOTE:
MINIMUM BUILDING SETBACK 18' FRONT OF LOT AND 10' SIDE CORNER LOTS.

NOTE:
DIRECT VEHICULAR ACCESS TO SUN CITY BOULEVARD FROM ABUTTING LOTS IS PROHIBITED.

LINE	BEARING	DISTANCE
1	N 18°21'44" E	19.21'
2	N 13°30'06" E	19.21'
3	N 12°44'05" E	19.21'
4	N 07°52'27" E	19.21'
5	N 07°12'26" E	19.21'
6	N 02°20'48" E	19.21'
7	N 01°44'23" E	19.21'
8	N 01°55'20" W	18.00'
9	N 01°55'20" W	18.00'

CURVE	DELTA	RADIUS	LENGTH	TANGENT
1	01°19'57"	1945.00'	45.23'	22.82'
2	10°44'05"	23.00'	42.04'	22.83'
3	77°58'28"	13.00'	17.68'	10.52'
4	00°29'59"	1325.00'	11.56'	5.78'
5	00°45'01"	1325.00'	11.74'	5.83'
6	04°51'36"	1325.00'	11.24'	5.64'
7	00°40'01"	1325.00'	15.42'	7.71'
8	00°38'45"	1325.00'	14.94'	7.47'
9	03°37'23"	1325.00'	83.78'	41.91'

LEGEND

- SET 5/8" REBAR AND ALUM. CAP STAMPED P.L.S. 7755 W/ ALUMINIUM CAP TIES IN TOP OF CURB (UNLESS OTHERWISE NOTED)
- SET MONUMENTATION PER N.R.S. 278.371
- 265 LOT NUMBER
TOTAL RESIDENTIAL LOTS = 265
COMMON LOTS IN SUBDIVISION = 5
- 10 BLOCK NUMBER
- 10 CURVE NUMBER
- L9 LINE SEGMENT NUMBER
- SUBDIVISION BOUNDARY LINE
- STREET CENTERLINE