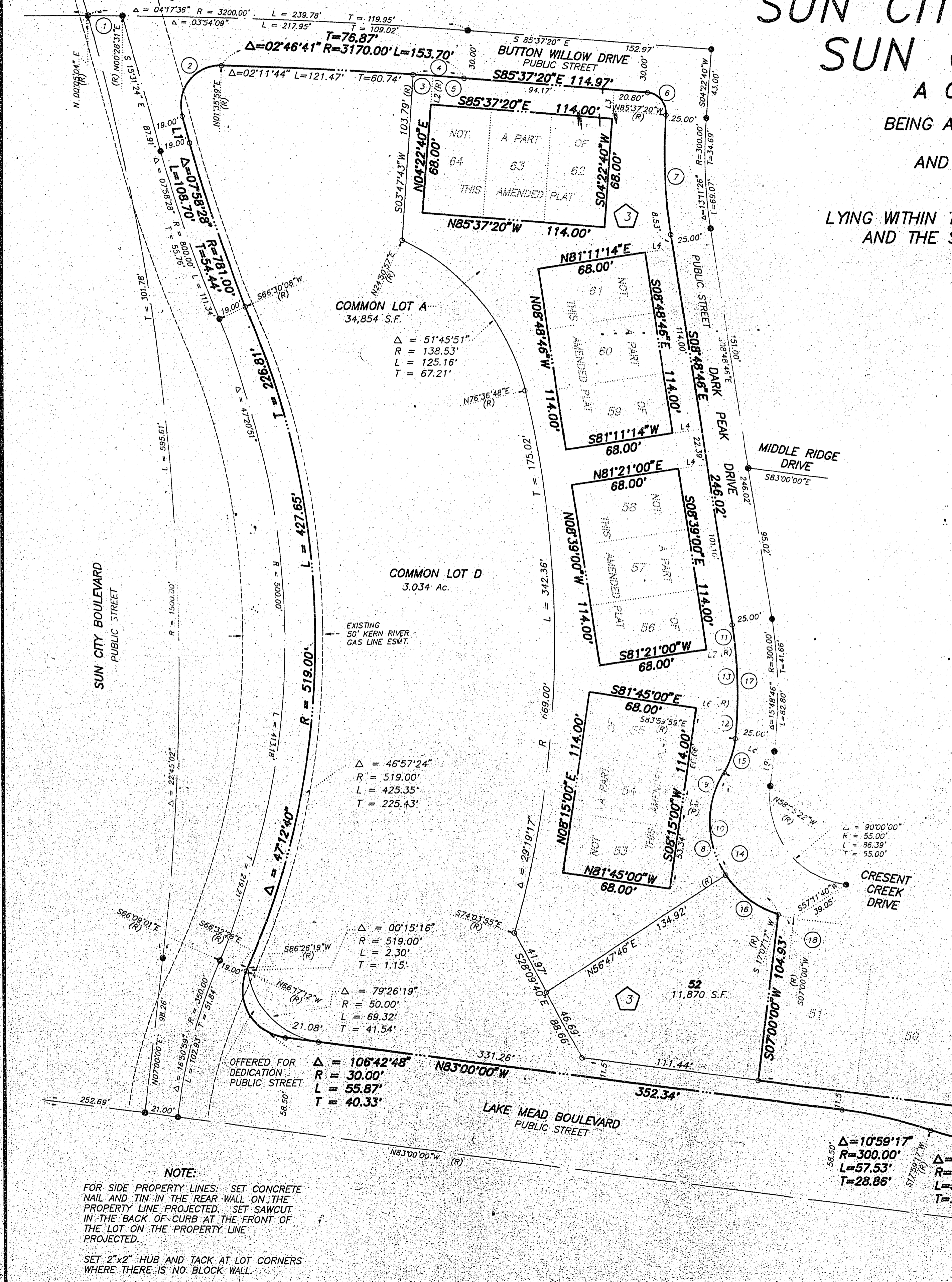


AMENDED PLAT OF PORTIONS OF SUN CITY LAS VEGAS – UNIT NO. 31 AND SUN CITY LAS VEGAS – UNIT NO. 36 A COMMON INTEREST COMMUNITY – A PLANNED DEVELOPMENT

BEING A SUBDIVISION OF ALL OF COMMON LOT D OF "SUN CITY LAS VEGAS – UNIT NO. 31"
AS SHOWN BY MAP THEREOF ON FILE IN BOOK 52, PAGE 1 OF PLATS
AND ALL OF LOT 52 AND COMMON LOT A OF "SUN CITY LAS VEGAS – UNIT NO. 36"
AS SHOWN BY MAP THEREOF ON FILE IN BOOK 52, PAGE 93 OF PLATS
IN THE CLARK COUNTY RECORDER'S OFFICE, CLARK COUNTY, NEVADA
LYING WITHIN THE SOUTHEAST QUARTER (SE 1/4) OF SECTION 13, TOWNSHIP 20 SOUTH, RANGE 59 EAST,
AND THE SOUTHWEST QUARTER (SW 1/4) OF SECTION 18, TOWNSHIP 20 SOUTH, RANGE 60 EAST,
M.D.M., CITY OF LAS VEGAS, CLARK COUNTY, NEVADA



CURVE	DELTA	RADIUS	LENGTH	TANGENT
1	00°23'27"	3200.00'	21.83'	1.97'
2	107°02'23"	25.00'	46.74'	33.86'
3	00°33'19"	3170.00'	12.28'	6.14'
4	00°34'57"	3170.00'	32.23'	16.11'
5	00°21'58"	3170.00'	19.95'	9.97'
6	90°00'00"	13.00'	20.42'	13.00'
7	131°12'26"	325.00'	74.82'	37.58'
8	41°27'17"	60.00'	43.41'	22.70'
9	21°19'38"	60.00'	24.43'	12.39'
10	64°46'52"	60.00'	67.84'	34.06'
11	02°52'34"	75.00'	13.61'	6.90'
12	03°43'29"	75.00'	17.88'	9.84'
13	08°12'44"	75.00'	36.42'	18.74'
14	104°27'21"	60.00'	109.39'	77.43'
15	25°34'37"	50.00'	22.32'	11.35'
16	39°40'59"	60.00'	41.55'	21.65'
17	14°48'47"	75.00'	71.10'	35.75'
18	107°21'17"	60.00'	10.60'	5.31'

LINE	BEARING	DISTANCE
L1	N15°31'24"W	17.44'
L2	S04°11'27"W	18.00'
L3	S04°22'40"W	18.00'
L4	S81°11'47"W	18.00'
L5	N81°41'00"W	18.00'
L6	N87°47'28"W	25.81'
L7	S84°11'43"W	18.00'
L8	S07°21'41"W	25.50'
L9	S07°11'00"W	21.83'
L10	S07°00'00"W	22.50'

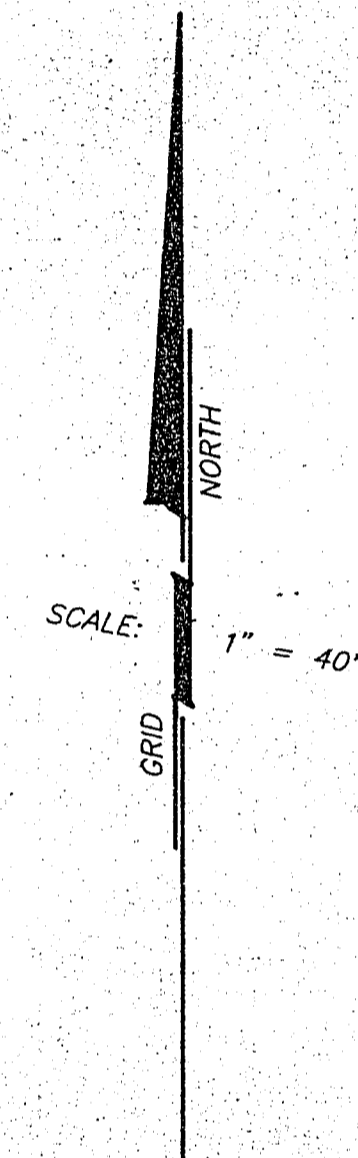
BASIS OF BEARINGS

THE NORTH LINE OF THE NORTHEAST QUARTER (NE 1/4) OF THE NORTHWEST QUARTER (NW 1/4) OF SECTION 13, TOWNSHIP 20 SOUTH, RANGE 59 EAST, M.D.M., CITY OF LAS VEGAS, CLARK COUNTY, NEVADA, SHOWN AS SOUTH 89°41'23" EAST, BEING THE BASIS OF BEARINGS AS SHOWN ON "SUN CITY LAS VEGAS – UNIT NO. 36" ON FILE IN BOOK 52, PAGE 93 OF PLATS IN THE CLARK COUNTY RECORDER'S OFFICE, CLARK COUNTY, NEVADA CITY LAS VEGAS – UNIT NO. 36" IN BOOK 52, PAGE 93 OF PLATS IN THE CLARK COUNTY RECORDER'S OFFICE, CLARK COUNTY, NEVADA

PURPOSE OF AMENDMENT

THE PURPOSE OF THIS AMENDMENT IS TO ADJUST THE BOUNDARY BETWEEN COMMON LOT D AND COMMON LOT A, AND BETWEEN COMMON LOT D AND A PORTION OF LOT 52, BLOCK 3, AND TO DEDICATE A SPANDREL AT THE INTERSECTION OF LAKE MEAD BOULEVARD AND SUN CITY BOULEVARD.

SUN CITY LAS VEGAS
UNIT NO. 36
BOOK 52, PAGE 93
OF PLATS



LEGEND

- SET 5/8" REBAR AND ALUM. CAP STAMPED P.L.S. 7755 W/ ALUM. CAP TIES IN TOP OF CURB (UNLESS OTHERWISE NOTED)
- SET MONUMENTATION PER N.R.S. 278.371
- 52 LOT NUMBER
TOTAL RESIDENTIAL LOTS = 1
TOTAL COMMON LOTS = 2
- 3 BLOCK NUMBER
- 11 CURVE NUMBER
- L1 LINE SEGMENT NUMBER
- SUBDIVISION BOUNDARY LINE
- STREET CENTERLINE
- EASEMENT LINE
- 3 SUN CITY LAS VEGAS UNIT NO. 31 BOOK 52, PAGE 01 OF PLATS
- 3 SUN CITY LAS VEGAS UNIT NO. 36 BOOK 51, PAGE 30 OF PLATS

NOTE:
FOR SIDE PROPERTY LINES: SET CONCRETE NAIL AND TIN IN THE REAR WALL ON THE PROPERTY LINE PROJECTED. SET SAWCUT IN THE BACK OF CURB AT THE FRONT OF THE LOT ON THE PROPERTY LINE PROJECTED.
SET 2"x2" HUB AND TACK AT LOT CORNERS WHERE THERE IS NO BLOCK WALL.