

Book No. \_\_\_\_\_

Instrument No. \_\_\_\_\_

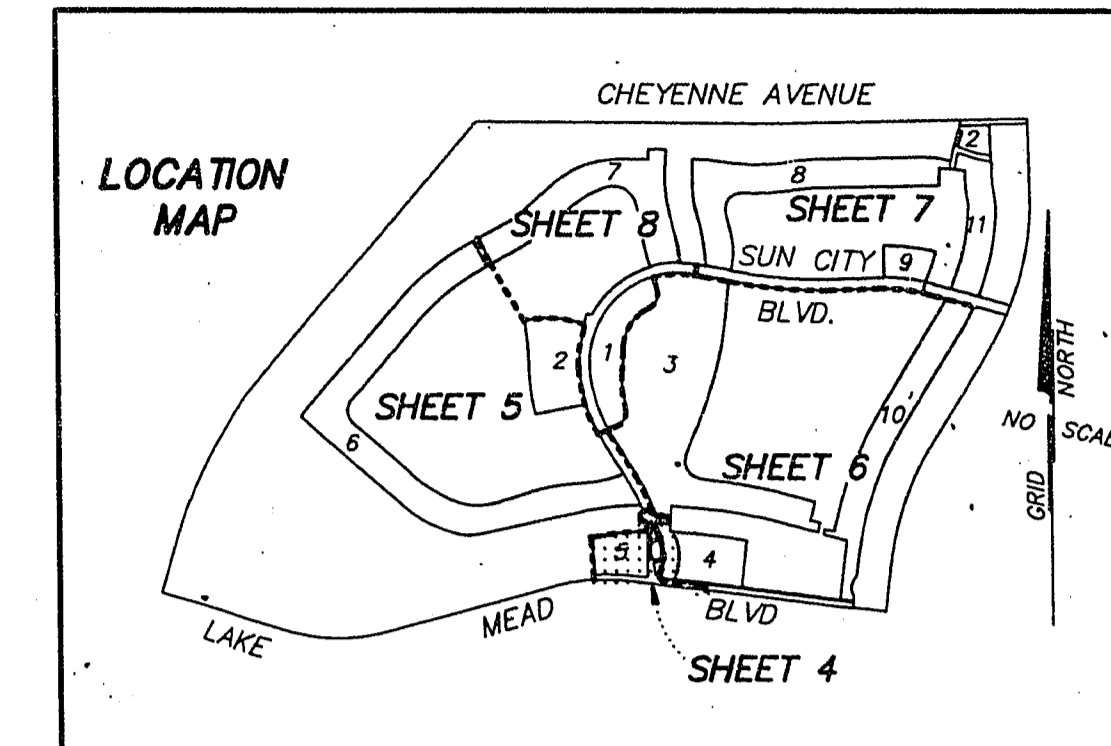
# A FINAL MAP OF SUN CITY LAS VEGAS - UNIT NO. 31 A PLANNED DEVELOPMENT

BEING A SUBDIVISION OF A PORTION OF PARCEL 1 AS SHOWN BY MAP THEREOF ON FILE IN  
FILE 71, PAGE 17 OF PARCEL MAPS IN THE CLARK COUNTY RECORDER'S OFFICE, CLARK COUNTY,  
NEVADA, LYING WITHIN SECTION 13, TOWNSHIP 20 SOUTH, RANGE 59 EAST, M.D.M., AND SECTION 18,  
TOWNSHIP 20 SOUTH, RANGE 60 EAST, M.D.M., CITY OF LAS VEGAS, CLARK COUNTY, NEVADA

### LEGEND

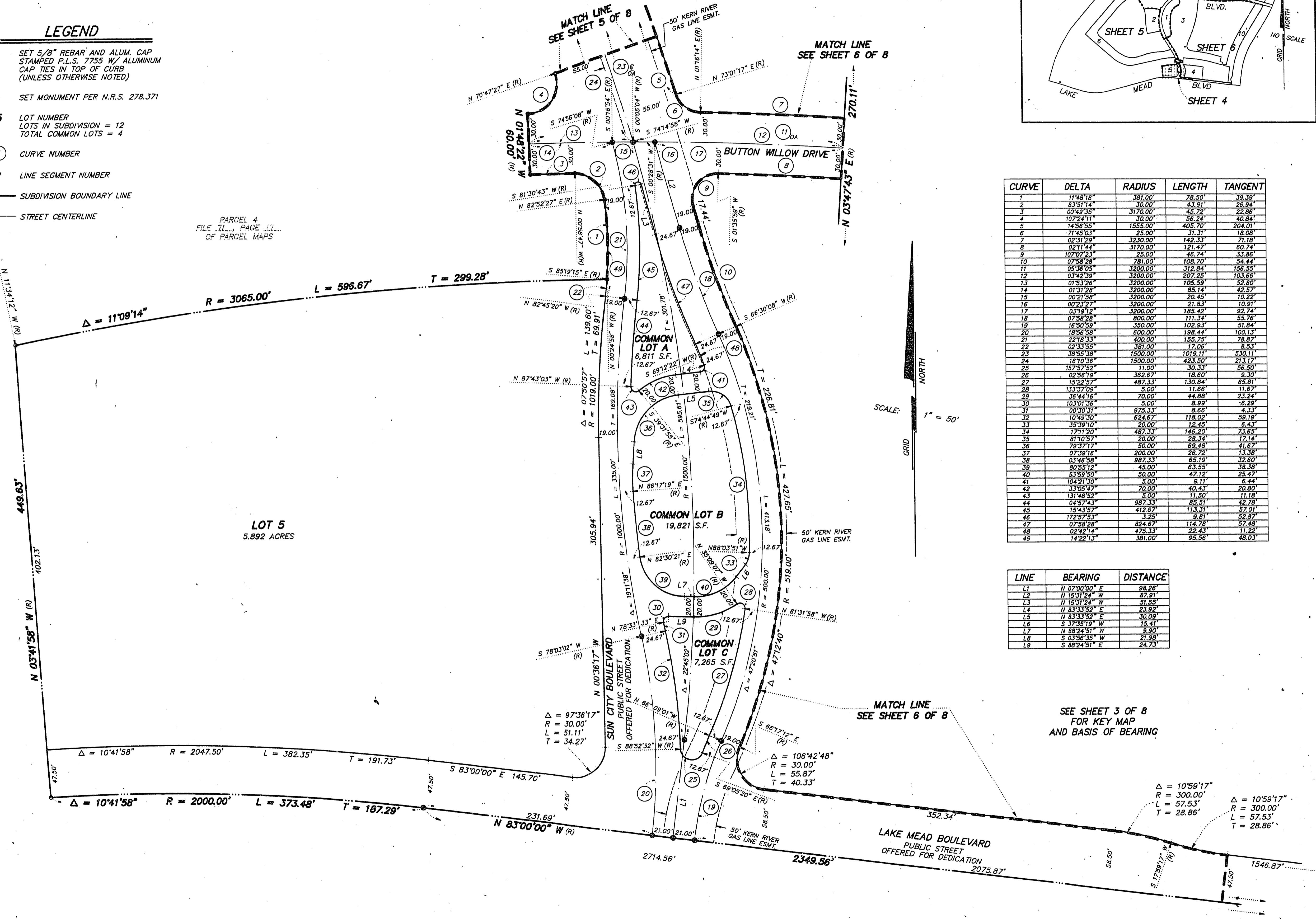
- SET 5/8" REBAR AND ALUM. CAP STAMPED P.L.S. 7755 W/ ALUMINUM CAP TIES IN TOP OF CURB (UNLESS OTHERWISE NOTED)
- SET MONUMENT PER N.R.S. 278.371
- 5 LOT NUMBER  
LOTS IN SUBDIVISION = 12  
TOTAL COMMON LOTS = 4
- ① CURVE NUMBER
- L1 LINE SEGMENT NUMBER
- SUBDIVISION BOUNDARY LINE
- STREET CENTERLINE

PARCEL 4  
FILE 111, PAGE 11...  
OF PARCEL MAPS



CURVE	DELTA	RADIUS	LENGTH	TANGENT
1	11°48'18"	381.00'	78.50'	39.39'
2	83°51'14"	30.00'	43.91'	26.94'
3	0°49'35"	3170.00'	43.72'	22.88'
4	107°24'11"	30.00'	56.24'	40.84'
5	145°56'55"	1555.00'	405.70'	204.01'
6	71°45'03"	25.00'	31.31'	18.08'
7	02°31'29"	3230.00'	142.33'	71.18'
8	02°11'44"	3170.00'	121.47'	60.74'
9	107°07'23"	25.00'	46.74'	33.86'
10	07°36'28"	781.00'	108.70'	54.44'
11	02°36'09"	3200.00'	312.84'	156.45'
12	03°42'39"	3200.00'	207.25'	103.66'
13	01°53'26"	3200.00'	105.59'	52.80'
14	01°31'29"	3200.00'	85.14'	42.57'
15	00°21'26"	3200.00'	20.45'	10.22'
16	00°23'27"	3200.00'	21.83'	10.91'
17	03°19'12"	3200.00'	185.42'	92.74'
18	07°36'28"	800.00'	111.34'	55.76'
19	16°50'59"	350.00'	102.93'	51.84'
20	18°56'58"	600.00'	198.44'	100.13'
21	22°16'33"	400.00'	155.25'	78.67'
22	02°16'55"	381.00'	17.06'	8.51'
23	38°55'36"	1500.00'	1019.11'	530.11'
24	16°10'36"	1500.00'	423.50'	213.17'
25	15°57'59"	1100'	30.33'	15.80'
26	02°56'19"	362.67'	18.60'	9.30'
27	15°22'57"	487.33'	130.84'	65.81'
28	13°37'09"	5.00'	11.66'	11.67'
29	34°41'16"	70.00'	44.88'	23.94'
30	10°30'31"	5.00'	8.99'	6.29'
31	00°30'31"	975.33'	8.66'	4.33'
32	10°46'56"	624.67'	118.02'	59.19'
33	33°49'10"	20.00'	12.45'	6.43'
34	17°11'20"	487.33'	146.20'	73.65'
35	81°10'57"	20.00'	28.34'	17.14'
36	79°37'17"	50.00'	59.49'	41.27'
37	07°39'16"	200.00'	26.72'	13.36'
38	03°46'58"	987.33'	65.19'	32.60'
39	80°55'12"	45.00'	63.55'	36.39'
40	53°59'50"	50.00'	47.12'	24.77'
41	104°21'50"	5.00'	9.11'	6.44'
42	33°05'47"	70.00'	40.43'	20.80'
43	131°48'52"	5.00'	11.50'	11.18'
44	05°47'43"	987.33'	66.51'	42.78'
45	15°43'57"	412.67'	113.31'	57.01'
46	17°29'25"	3.25'	8.81'	52.87'
47	07°58'59"	844.67'	114.78'	57.48'
48	02°42'14"	475.33'	22.43'	11.22'
49	14°22'13"	381.00'	95.56'	48.03'

LINE	BEARING	DISTANCE
L1	N 07°00'00" E	98.26'
L2	N 16°31'24" W	87.91'
L3	N 16°31'24" W	51.55'
L4	N 83°13'52" E	23.92'
L5	N 83°13'52" E	30.09'
L6	S 37°45'19" W	15.41'
L7	N 88°24'51" W	9.90'
L8	S 03°56'35" W	21.98'
L9	S 88°24'51" E	24.73'



SCALE: 1" = 50'

SEE SHEET 3 OF 8 FOR KEY MAP AND BASIS OF BEARING

SHEET 4 OF 8