

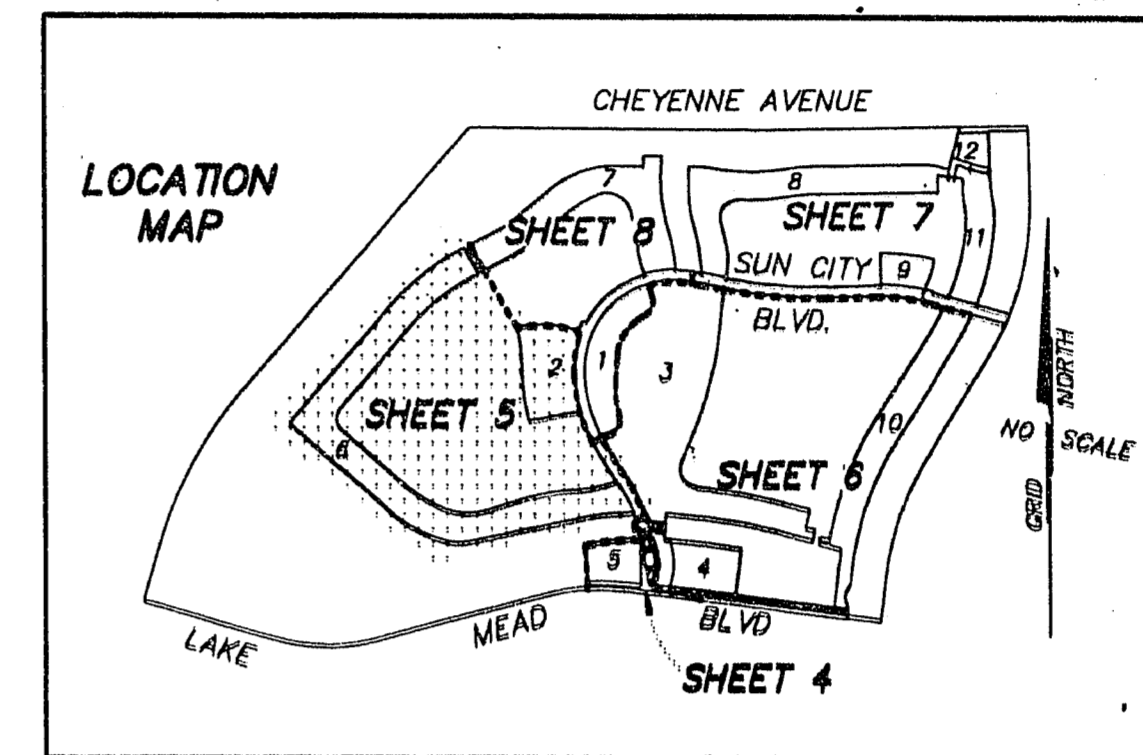
Book No. _____

Instrument No. _____

A FINAL MAP OF SUN CITY LAS VEGAS - UNIT NO. 31

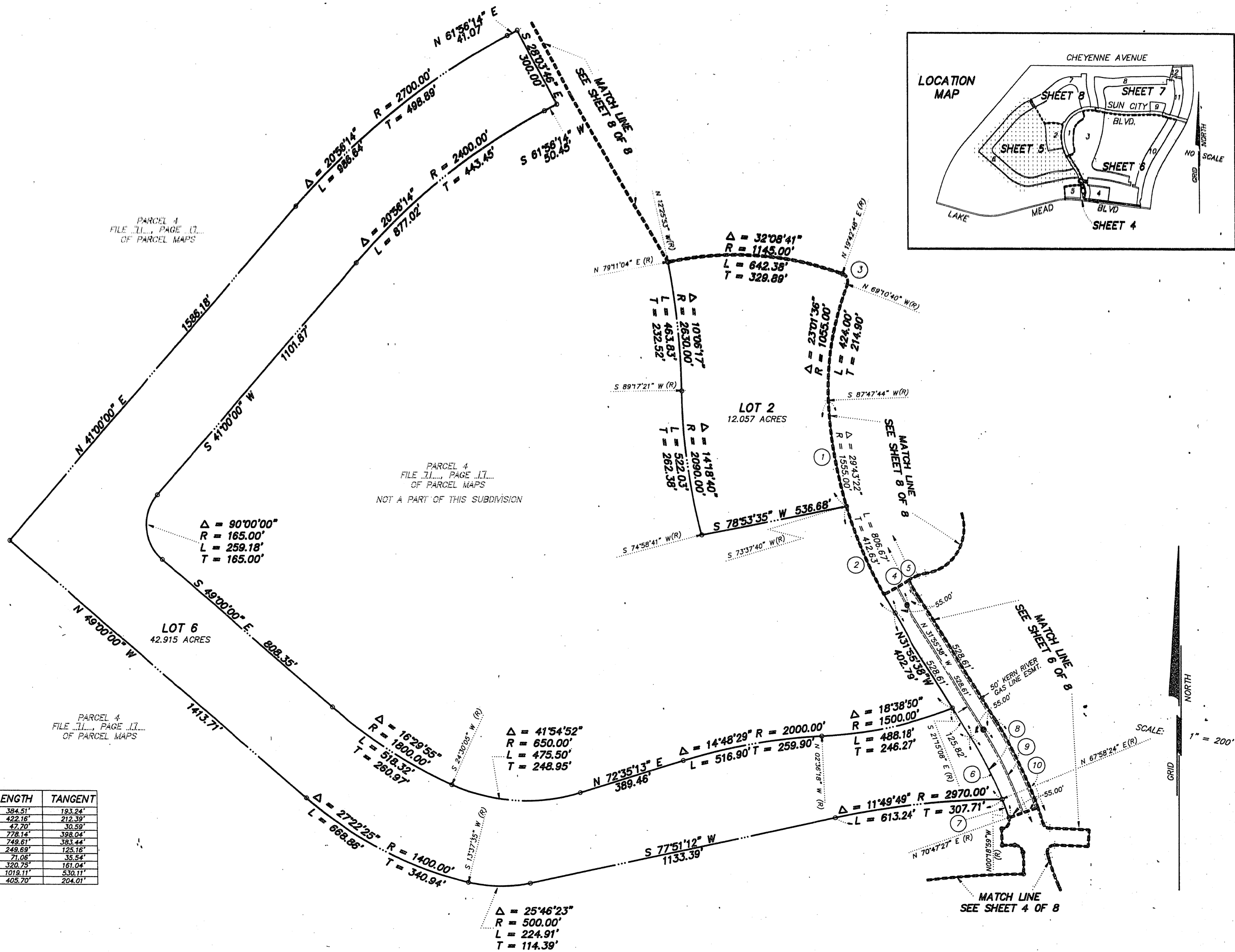
A PLANNED DEVELOPMENT

BEING A SUBDIVISION OF A PORTION OF PARCEL 1 AS SHOWN BY MAP THEREOF ON FILE IN FILE 11, PAGE 17 OF PARCEL MAPS IN THE CLARK COUNTY RECORDER'S OFFICE, CLARK COUNTY, NEVADA, LYING WITHIN SECTION 13, TOWNSHIP 20 SOUTH, RANGE 59 EAST, M.D.M.; AND SECTION 18, TOWNSHIP 20 SOUTH, RANGE 60 EAST, M.D.M., CITY OF LAS VEGAS, CLARK COUNTY, NEVADA.



LEGEND

- SET 5/8" REBAR AND ALUM. CAP STAMPED P.L.S. 7755 W/ ALUMINUM CAP TIES IN TOP OF CURB (UNLESS OTHERWISE NOTED)
- SET MONUMENT PER N.R.S. 278.371
- 6 LOT NUMBER
LOTS IN SUBDIVISION = 12
TOTAL COMMON LOTS = 4
- ① CURVE NUMBER
- SUBDIVISION BOUNDARY LINE
- STREET CENTERLINE



CURVE	DELTA	RADIUS	LENGTH	TANGENT
1	141°04'	1555.00'	384.51'	183.24'
2	15°33'18"	1555.00'	422.16'	212.39'
3	91°06'32"	30.00'	47.70'	30.59'
4	29°43'22"	1500.00'	778.14'	398.04'
5	29°43'22"	1445.00'	749.51'	383.44'
6	09°54'02"	1445.00'	249.69'	125.16'
7	02°49'05"	1445.00'	71.06'	35.54'
8	124°105"	1445.00'	320.25'	161.04'
9	38°55'38"	1500.00'	1019.11'	530.11'
10	14°56'55"	1555.00'	405.70'	204.01'