

960720

21-17-211

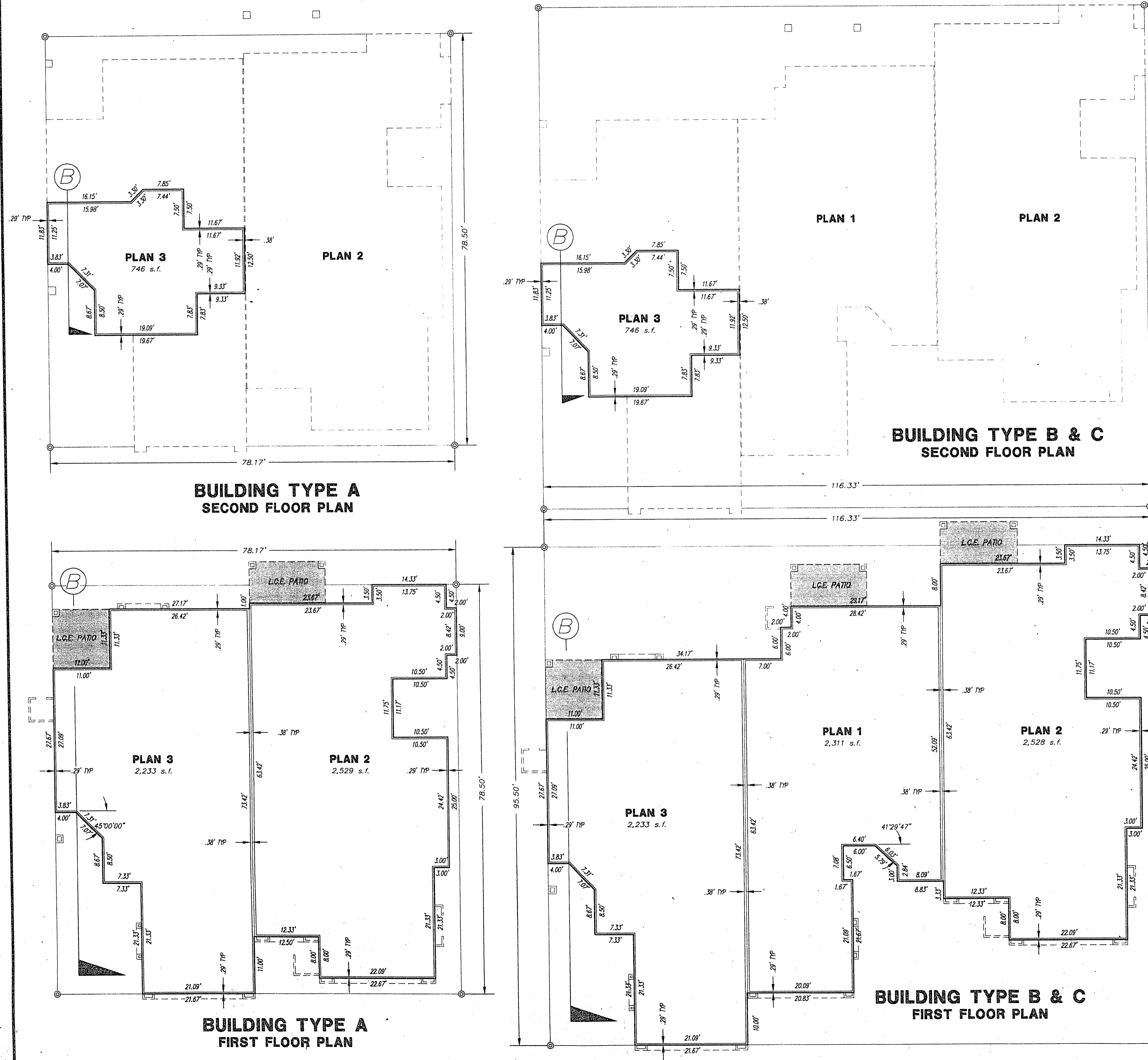
01960

SUMMERTRAIL

SUMMERLIN VILLAGE 7 - THE TRAILS - UNIT NO. 2C

A CONDOMINIUM COMMON INTEREST COMMUNITY

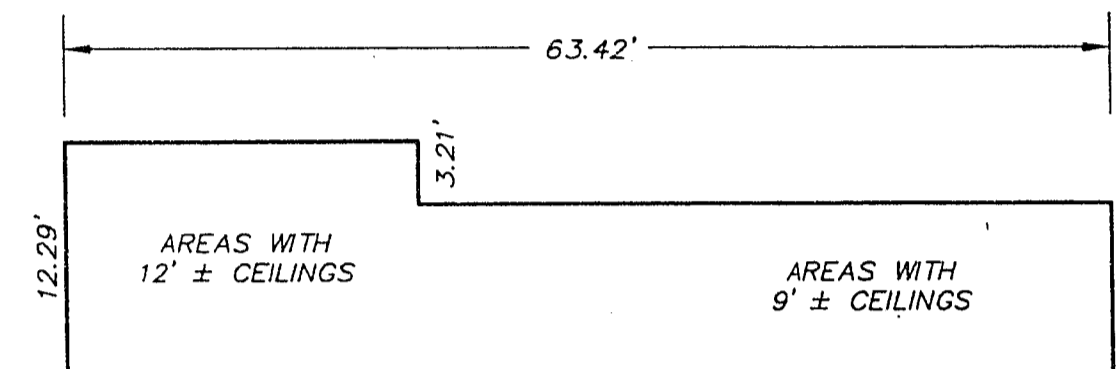
BEING ALL OF LOT 5 AS SHOWN BY MAP THEREOF ON FILE IN BOOK 62 PAGE 96 OF PLATS RECORDED IN THE CLARK COUNTY RECORDER'S OFFICE, CLARK COUNTY, NEVADA, LYING WITHIN SECTION 24 OF TOWNSHIP 20 SOUTH RANGE 69 EAST AND 19 OF TOWNSHIP 20 SOUTH, RANGE 60 EAST, M.D.M., CITY OF LAS VEGAS, CLARK COUNTY, NEVADA.



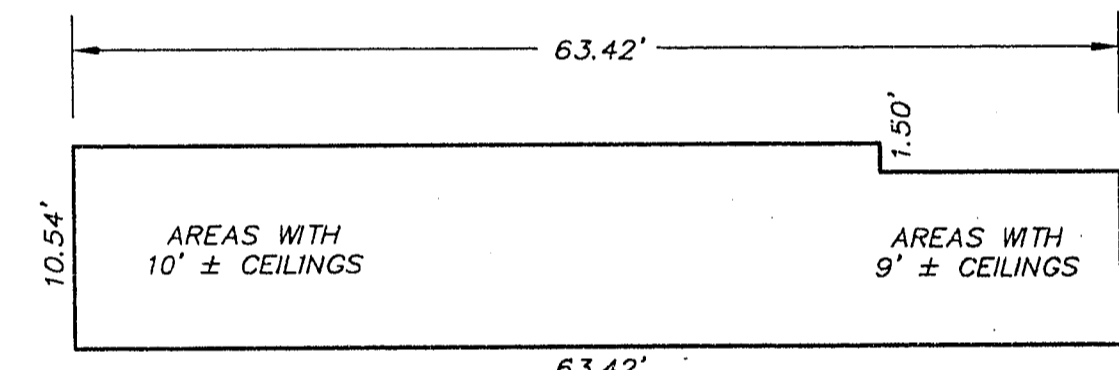
LEGEND AND NOTES

- AC AIR CONDITIONER PADS
- L.C.E. LIMITED COMMON ELEMENTS
- ⊙ TIE POINTS

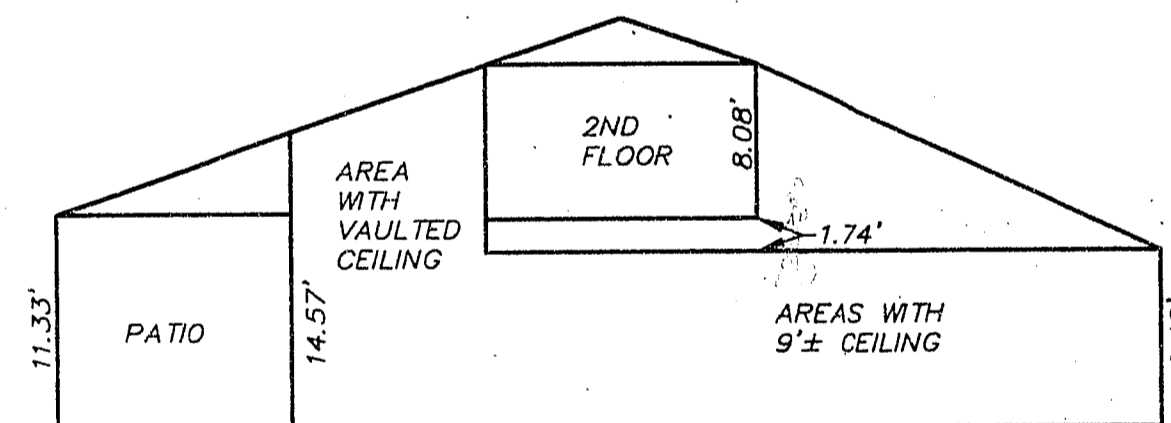
1. THE DETAILS AND SECTIONS SHOWN HEREON ARE ILLUSTRATIVE OF THE BUILDINGS TO BE CONSTRUCTED. THE BOUNDARIES OF THE UNIT GRANTED ARE THE INTERIOR FACE OF STUD OF THE EXTERIOR WALLS AND PARTY WALLS. ADDITIONALLY THE BOUNDARIES OF THE UNIT GRANTED SHALL COMPLY WITH THE PROVISIONS OF NEVADA REVISED STATUTES CHAPTER 116.2102.
2. EXTERIOR AND INTERIOR WALL BEARINGS ARE PARALLEL OR PERPENDICULAR TO THOSE SHOWN AS INDIVIDUAL BUILDING TIES ON SHEET 3, 4, 5, 6 AND 7 OF 10.
3. L.C.E. DESIGNATES LIMITED COMMON ELEMENTS OF FIRST FLOOR PATIOS AND PORCHES AND SECOND FLOOR BALCONIES AND PORCHES TO ADJACENT UNITS ONLY.
4. ALL EXTERIOR WALLS ARE 0.29' THICK UNLESS DESIGNATED



PLAN 1 ELEVATION VIEW
NOT TO SCALE
SECTION THROUGH "B"

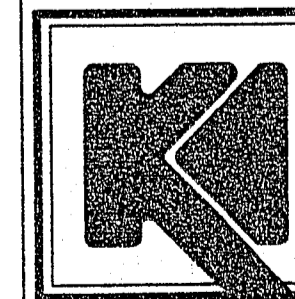


PLAN 2 ELEVATION VIEW
NOT TO SCALE
SECTION THROUGH "B"



PLAN 3 ELEVATION VIEW
NOT TO SCALE
SECTION THROUGH "B"

SURVEYOR



THE KEITH COMPANIES, NEVADA

- PLANNING
- CIVIL ENGINEERING
- ENVIRONMENTAL SERVICES
- LAND SURVEYING
- DEVELOPER SERVICES
- PUBLIC WORKS
- WATER RESOURCES

4062 SOUTH INDUSTRIAL ROAD, LAS VEGAS, NV 89103 (702)733-0350 FAX(702)733-0282

SCALE: 1" = 10'

SUMMERTRAIL
-THE TRAILS- UNIT NO. 2C
AT SUMMERLIN VLLAGE 7

SHEET 6 OF 7

BOOK 69 PAGE 10
4390