

CURVE	DELTA	RADIUS	LENGTH	TANGENT
1	12°24'59"	692.00'	149.96'	75.28'
2	01°59'14"	692.00'	25.77'	12.00'
3	03°32'27"	692.00'	25.77'	21.39'
4	53°48'12"	135.00'	126.77'	68.49'
5	16°44'06"	152.00'	44.40'	22.36'
6	10°34'55"	152.00'	28.96'	14.97'
7	21°22'03"	152.00'	36.60'	28.63'
8	35°56'43"	152.00'	49.36'	49.31'
9	03°12'01"	663.00'	37.03'	18.52'
10	02°19'47"	5.00'	8.06'	5.21'
11	02°22'05"	643.00'	26.58'	13.29'
12	01°56'59"	663.00'	22.56'	11.28'
13	19°13'19"	108.00'	68.76'	38.71'
14	01°36'10"	643.00'	17.99'	8.99'
15	11°47'18"	128.00'	26.34'	13.71'
16	02°00'14"	5.00'	8.03'	5.18'
17	26°05'01"	148.00'	67.38'	34.28'
18	02°22'05"	643.00'	26.58'	13.29'
19	01°56'59"	663.00'	22.56'	11.28'
20	17°51'11"	108.00'	41.13'	20.73'
21	17°51'11"	108.00'	37.39'	18.85'
22	17°51'11"	108.00'	33.65'	16.96'
23	02°32'37"	25.00'	36.02'	21.94'
24	06°10'37"	20.00'	2.16'	1.08'
25	02°33'47"	692.00'	30.96'	15.48'
26	120°45'10"	40.50'	85.36'	71.22'
27	06°07'40"	20.00'	33.55'	22.26'
28	10°28'17"	20.00'	35.71'	24.83'
29	02°14'44"	692.00'	27.12'	13.56'
30	19°13'16"	40.50'	13.59'	6.86'
31	122°34'11"	40.50'	86.64'	73.93'
32	17°08'40"	215.00'	64.33'	32.41'
33	33°35'00"	215.00'	126.02'	64.88'
34	55°36'21"	25.00'	24.26'	13.18'
35	55°36'20"	25.00'	24.26'	13.18'
36	16°26'20"	215.00'	61.89'	31.06'
37	01°38'53"	213.00'	6.00'	3.00'
38	10°38'00"	193.00'	35.82'	17.96'
39	01°22'39"	5.00'	7.97'	5.12'
40	44°31'02"	237.00'	184.14'	97.00'
41	51°03'14"	225.00'	200.49'	107.45'
42	00°00'00"	5.00'	7.85'	5.00'
43	72°23'33"	25.00'	31.59'	18.29'
44	34°10'48"	25.00'	14.91'	7.69'
45	34°10'48"	37.00'	22.07'	11.39'
46	116°29'08"	40.50'	62.33'	65.41'
47	89°08'58"	40.50'	63.02'	39.90'
48	89°08'58"	28.50'	44.34'	28.08'

SUMMERTRAIL

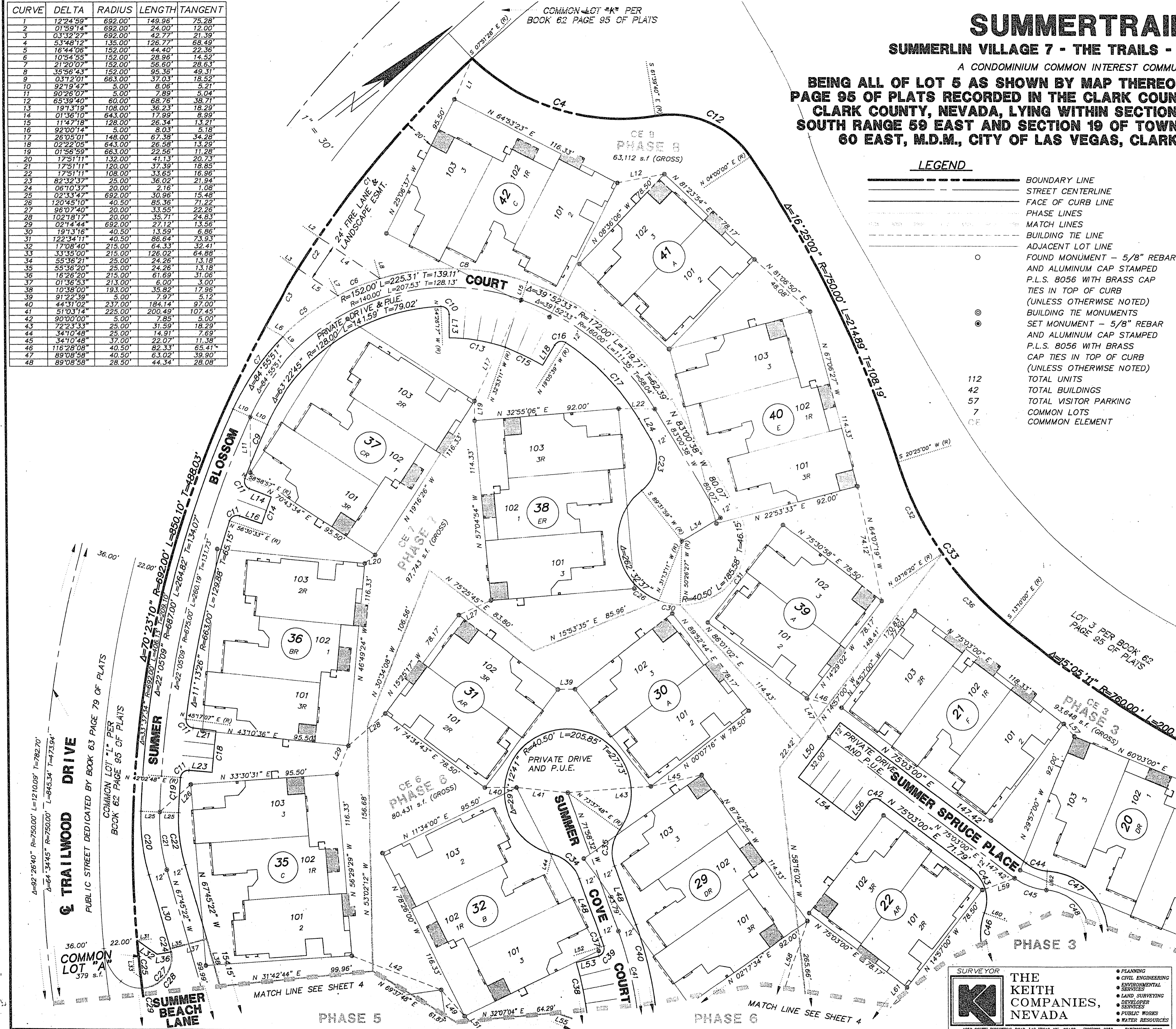
SUMMERLIN VILLAGE 7 - THE TRAILS - UNIT NO. 2C

A CONDOMINIUM COMMON INTEREST COMMUNITY

BEING ALL OF LOT 5 AS SHOWN BY MAP THEREOF ON FILE IN BOOK 62 PAGE 95 OF PLATS RECORDED IN THE CLARK COUNTY RECORDER'S OFFICE, CLARK COUNTY, NEVADA, LYING WITHIN SECTION 24 OF TOWNSHIP 20 SOUTH RANGE 59 EAST AND SECTION 19 OF TOWNSHIP 20 SOUTH, RANGE 60 EAST, M.D.M., CITY OF LAS VEGAS, CLARK COUNTY, NEVADA.

- LEGEND**
- BOUNDARY LINE
 - STREET CENTERLINE
 - FACE OF CURB LINE
 - PHASE LINES
 - MATCH LINES
 - BUILDING TIE LINE
 - ADJACENT LOT LINE
 - FOUND MONUMENT - 5/8" REBAR AND ALUMINUM CAP STAMPED P.L.S. 8056 WITH BRASS CAP TIES IN TOP OF CURB (UNLESS OTHERWISE NOTED)
 - BUILDING TIE MONUMENTS
 - SET MONUMENT - 5/8" REBAR AND ALUMINUM CAP STAMPED P.L.S. 8056 WITH BRASS CAP TIES IN TOP OF CURB (UNLESS OTHERWISE NOTED)
 - 112 TOTAL UNITS
 - 42 TOTAL BUILDINGS
 - 57 TOTAL VISITOR PARKING
 - 7 COMMON LOTS
 - CF COMMON ELEMENT

LINE	BEARING	DISTANCE
L1	N 28°30'30" W	28.40'
L2	S 22°30'01" W (R)	0.00'
L3	S 70°23'46" W (R)	0.00'
L4	S 71°49'00" W	46.97'
L5	S 71°49'00" W	30.67'
L6	N 66°51'20" E (R)	13.16'
L7	N 79°44'49" W (R)	0.00'
L8	N 68°49'54" W (R)	0.00'
L9	S 83°31'05" W (R)	0.00'
L10	S 62°10'58" W (R)	0.00'
L11	N 52°56'35" W	35.45'
L12	N 27°20'32" E	30.30'
L13	N 52°06'30" W (R)	14.90'
L14	N 58°32'50" E (R)	14.98'
L15	N 32°53'11" W (R)	12.00'
L16	N 58°56'40" E (R)	14.98'
L17	N 26°53'49" W	70.83'
L18	N 21°05'53" W (R)	14.91'
L19	N 52°07'04" W	12.56'
L20	N 32°39'00" E	5.63'
L21	N 44°51'00" E (R)	14.98'
L22	N 38°29'50" E	23.13'
L23	N 42°28'55" E (R)	14.98'
L24	N 83°00'38" W	15.13'
L25	S 40°03'49" W (R)	0.00'
L26	N 04°00'57" W	26.46'
L27	N 13°19'59" E	22.35'
L28	N 02°47'04" E	27.24'
L29	N 32°03'59" W	24.65'
L30	N 67°45'22" W	49.25'
L31	S 33°13'46" W (R)	0.00'
L32	N 73°25'15" E	15.67'
L33	S 53°27'05" E (R)	0.00'
L34	N 08°59'22" E	28.50'
L35	N 22°14'38" E (R)	0.00'
L36	N 28°25'15" E (R)	9.22'
L37	N 22°14'38" E	24.00'
L38	N 67°45'22" W	31.45'
L39	N 37°13'44" E	10.90'
L40	N 37°02'36" E	20.52'
L41	N 43°34'48" E	32.55'
L42	N 78°59'02" E	60.54'
L43	N 31°24'17" E	92.89'
L44	N 37°34'53" W (R)	0.00'
L45	N 24°48'22" E	32.94'
L46	N 52°53'09" E	22.80'
L47	N 81°22'32" W	28.50'
L48	N 71°58'32" W	39.74'
L49	N 86°30'33" E	22.37'
L50	N 14°57'00" W	44.00'
L51	N 72°02'09" E	9.43'
L52	N 19°38'21" E (R)	0.00'
L53	N 21°01'00" E (R)	14.94'
L54	N 75°03'00" E	45.00'
L55	N 57°43'11" E	22.18'
L56	N 14°57'00" W	15.00'
L57	N 89°01'01" E	10.23'
L58	N 33°58'46" W	50.35'
L59	N 17°30'42" E	21.84'
L60	S 57°28'13" W (R)	0.00'
L61	N 12°58'25" W	35.41'
L62	N 49°07'48" W (R)	12.00'
L63	N 14°41'54" E	24.90'



SURVEYOR

THE KEITH COMPANIES, NEVADA

- PLANNING
- CIVIL ENGINEERING
- ENVIRONMENTAL SERVICES
- LAND SURVEYING
- DEVELOPER SERVICES
- PUBLIC WORKS
- WATER RESOURCES

4082 SOUTH INDUSTRIAL ROAD, LAS VEGAS, NV 89103 (702) 735-2000 FAX (702) 735-8002

SUMMERTRAIL
AT SUMMERLIN VILLAGE 7
- THE TRAILS - UNIT 2C
SHEET 3 OF 7

BOOK 09 PAGE 10
4390