

940715

16-17-174

00721

SUMMERLIN VILLAGE 7 - THE TRAILS

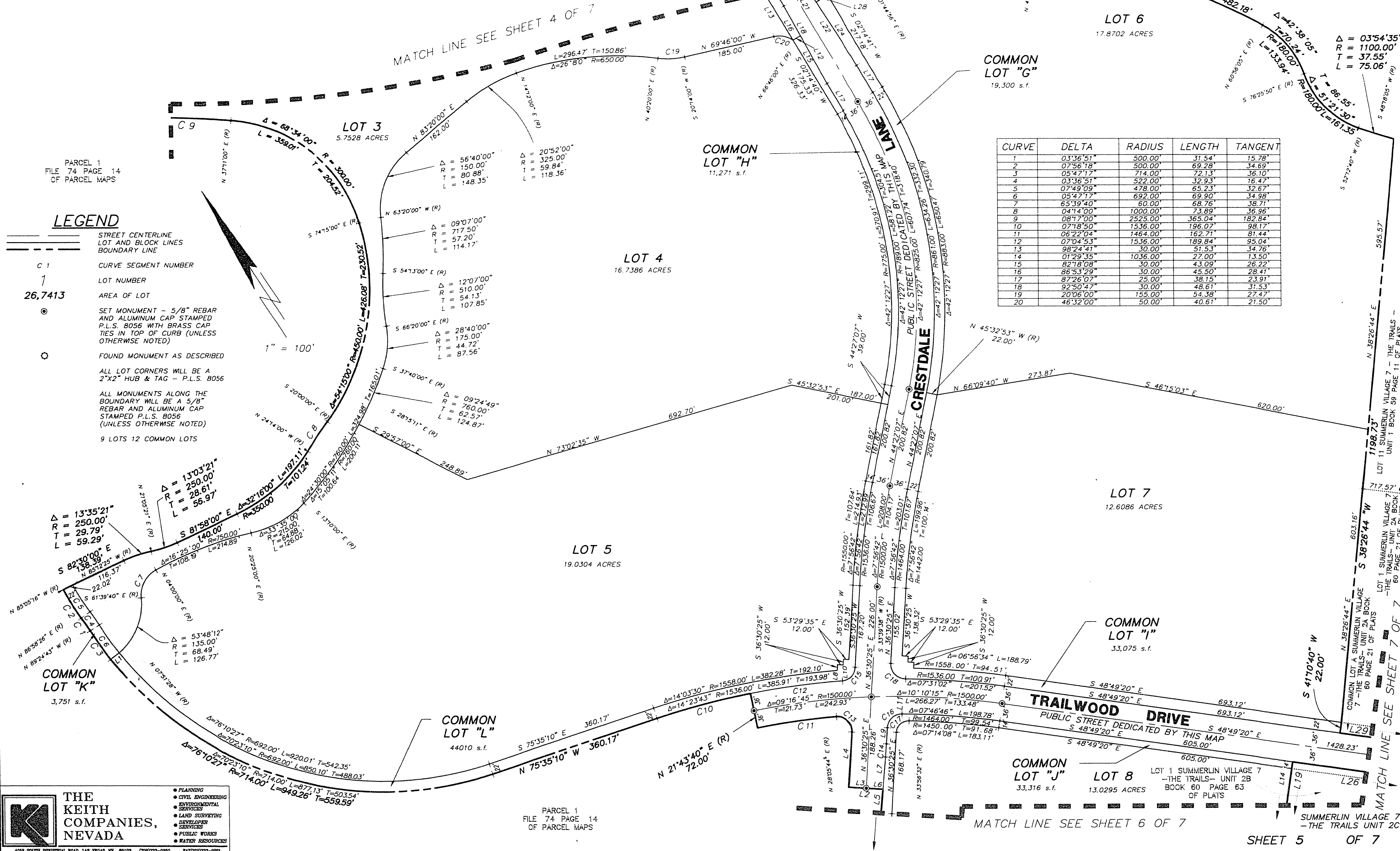
UNIT NO. 2C

A SUBDIVISION OF A PORTION OF PARCEL 1 AS SHOWN BY MAP THEREOF ON FILE IN FILE 74, PAGE 14 OF PARCEL MAPS, IN THE CLARK COUNTY RECORDER'S OFFICE, CLARK COUNTY, NEVADA, LYING WITHIN SECTION 24 OF TOWNSHIP 20 SOUTH, RANGE 59 EAST AND SECTIONS 18, 19 AND 30 OF TOWNSHIP 20 SOUTH, RANGE 60 EAST, M.D.M., CITY OF LAS VEGAS, CLARK COUNTY, NEVADA.

LINE	BEARING	DISTANCE
L1	N84°48'00" E (R)	22.00'
L2	N53°29'35" W	68.91'
L3	S53°29'35" W	36.00'
L4	N36°30'25" E	113.74'
L5	N38°00'00" E	411.00'
L6	S53°29'35" E	33.91'
L7	N38°00'00" E	66.81'
L8	S28°28'20" W (R)	-
L9	N36°30'25" E	33.25'
L10	S28°48'33" W (R)	-
L11	N33°23'54" E (R)	-
L12	S8°45'20" E	17.70'
L13	N02°14'40" E	151.00'
L14	N41°10'40" E	411.26'
L15	S04°09'13" W	111.21'

LINE	BEARING	DISTANCE
L16	S04°09'13" W	68.89'
L17	S02°14'40" W	64.18'
L18	S04°09'13" W	180.10'
L19	N41°10'40" E	425.26'
L20	S02°14'40" W	149.94'
L21	S02°14'40" W	326.33'
L22	S00°20'07" W	180.10'
L23	S00°20'07" W	27.01'
L24	S00°20'07" W	153.08'
L25	S02°14'40" W	105.00'
L26	S48°49'20" E	82.323'
L27	S02°14'40" W	109.15'
L28	S87°45'19" E	27.10'
L29	S48°49'20" E	735.11'

CURVE	DELTA	RADIUS	LENGTH	TANGENT
1	03°36'51"	500.00'	31.54'	15.78'
2	07°36'18"	500.00'	69.28'	34.69'
3	05°47'17"	714.00'	72.13'	36.10'
4	03°36'51"	522.00'	32.93'	16.47'
5	07°49'09"	478.00'	65.23'	32.67'
6	05°47'17"	692.00'	69.90'	34.98'
7	65°39'40"	60.00'	68.76'	38.71'
8	04°14'00"	1000.00'	73.89'	36.96'
9	08°17'00"	2525.00'	365.04'	182.84'
10	07°18'50"	1536.00'	196.07'	98.17'
11	06°22'04"	1464.00'	182.71'	91.44'
12	07°04'53"	1536.00'	189.84'	95.04'
13	98°24'41"	30.00'	51.53'	34.76'
14	01°29'33"	1036.00'	27.00'	13.50'
15	82°18'08"	30.00'	43.00'	26.22'
16	86°53'29"	30.00'	45.50'	28.41'
17	87°26'07"	25.00'	38.15'	23.91'
18	92°50'47"	30.00'	48.61'	31.53'
19	20°06'00"	155.00'	54.38'	27.47'
20	46°32'00"	50.00'	40.61'	21.50'



LEGEND

STREET CENTERLINE
LOT AND BLOCK LINES
BOUNDARY LINE

C 1 CURVE SEGMENT NUMBER
1 LOT NUMBER
26,7413 AREA OF LOT

SET MONUMENT - 5/8" REBAR AND ALUMINUM CAP STAMPED P.L.S. 8056 WITH BRASS CAP TIES IN TOP OF CURB (UNLESS OTHERWISE NOTED)

FOUND MONUMENT AS DESCRIBED

ALL LOT CORNERS WILL BE A 2"x2" HUB & TAG - P.L.S. 8056

ALL MONUMENTS ALONG THE BOUNDARY WILL BE A 5/8" REBAR AND ALUMINUM CAP STAMPED P.L.S. 8056 (UNLESS OTHERWISE NOTED)

9 LOTS 12 COMMON LOTS

1" = 100'

THE KEITH COMPANIES, NEVADA

- PLANNING
- CIVIL ENGINEERING
- ENVIRONMENTAL SERVICES
- LAND SURVEYING
- SURVEYING SERVICES
- PUBLIC UTILITIES
- WATER RESOURCES

4518 SOUTH INDUSTRIAL ROAD, LAS VEGAS, NV 89103 (702)735-0880 FAX(702)735-0881

PARCEL 1
FILE 74 PAGE 14
OF PARCEL MAPS

MATCH LINE SEE SHEET 6 OF 7

SHEET 5 OF 7

BOOK 62 PAGE 95

4271-2C