

96112

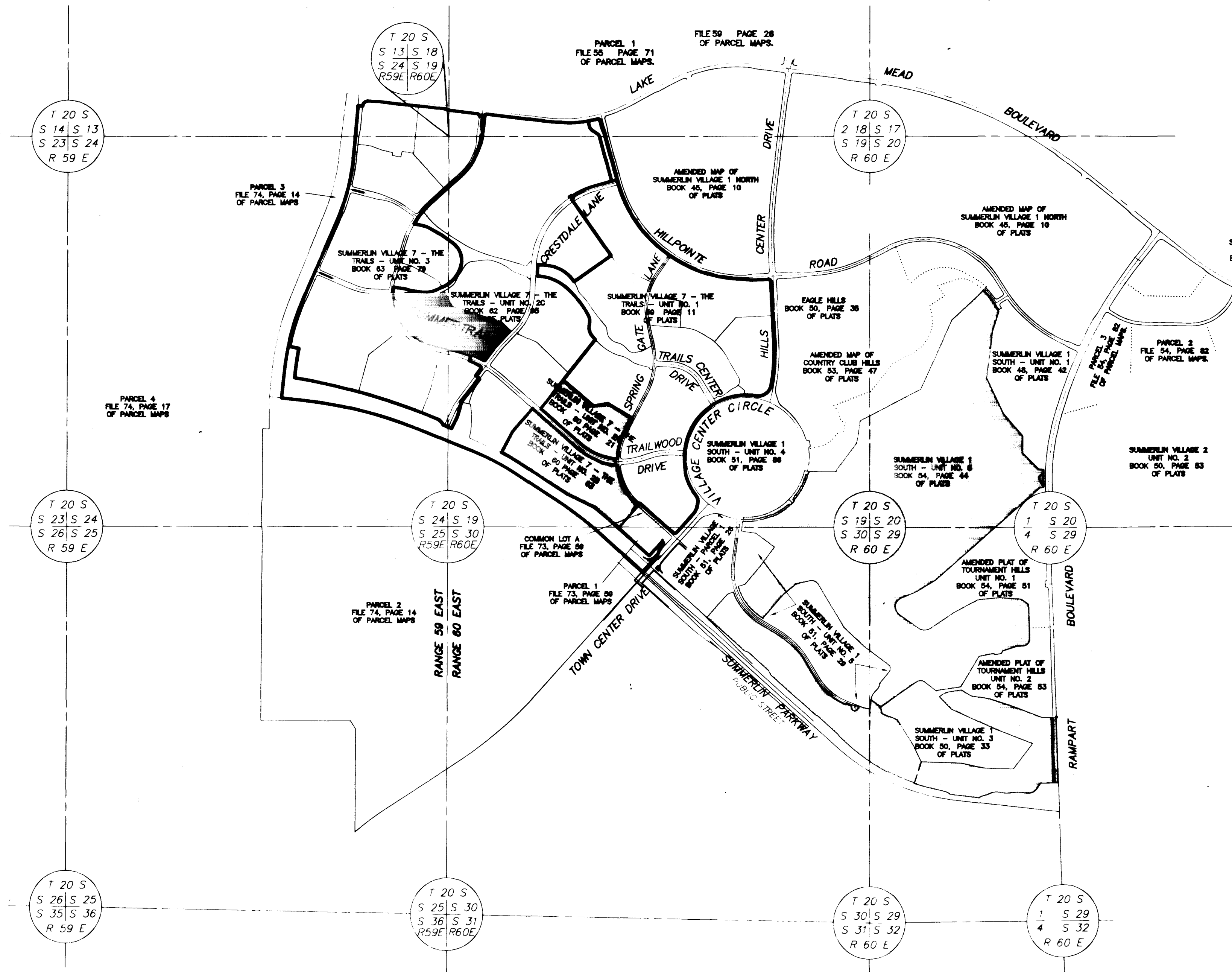
00659

# AMENDED MAP OF A PORTION OF SUMMERTRAIL

## SUMMERLIN VILLAGE 7 - THE TRAILS - UNIT NO. 2C

A CONDOMINIUM COMMON INTEREST COMMUNITY

BEING ALL OF LOT 5 AS SHOWN BY MAP THEREOF ON FILE IN BOOK 62 PAGE 95 OF PLATS RECORDED IN THE CLARK COUNTY RECORDER'S OFFICE, CLARK COUNTY, NEVADA, LYING WITHIN SECTION 24 OF TOWNSHIP 20 SOUTH RANGE 59 EAST AND SECTION 19 OF TOWNSHIP 20 SOUTH, RANGE 60 EAST, M.D.M., CITY OF LAS VEGAS, CLARK COUNTY, NEVADA.



**NOTE:** THE MAP ON FILE IN BOOK 69 PAGE 10 OF PLATS IS BEING AMENDED FOR THE FOLLOWING REASONS.

1. CHANGED BUILDING TYPES AND LOCATIONS OF BUILDING NUMBERS 5, 7, 10, 11, 33, 34, 35, 36, 37, 38, 40, 41, 42
2. CHANGED PHASE LINES



THE  
KEITH  
COMPANIES,  
NEVADA

- PLANNING
- CIVIL ENGINEERING
- ENVIRONMENTAL SERVICES
- LAND SURVEYING
- DEVELOPER SERVICES
- PUBLIC WORKS
- WATER RESOURCES

AMENDED MAP OF  
A PORTION OF SUMMERTRAIL  
AT SUMMERLIN VILLAGE 7  
- THE TRAILS - UNIT NO. 2C

SHEET 3 OF 9

BOOK 76 PAGE 95  
Amended 4271-2C

96.112

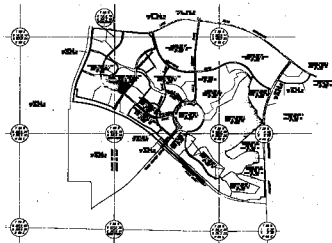
00619

### AMENDED MAP OF A PORTION OF SUMMERTRAIL

SUMMER VILLAGE 7 - THE TRAILS - UNIT NO. 50

A COMMUNITY CENTER PROJECT

WHERE ALL OF LOT 5 AS SHOWN BY MAP THEREOF ON FILE IN BOOK 25 PAGE 84 OF PLATS RECORDED IN THE CLARK COUNTY RECORDERS OFFICE, CLARK COUNTY, NEVADA, LIES WITHIN SECTION 26 OF TOWNSHIP 20 SOUTH RANGE 96 EAST AND SECTION 19 OF TOWNSHIP 20 SOUTH, RANGE 96 EAST, M.R.M., CITY OF LAS VEGAS, CLARK COUNTY, NEVADA.



- NOTE: THE MAP ON FILE IN BOOK 25 PAGE 84 OF PLATS IS BEING AMENDED FOR THE FOLLOWING REASONS:
1. CORRECTED ERRORS THAT ARE LISTED ON THE LAST PAGE OF THIS MAP.
  2. CHANGED PLANT LINES.



THE  
KEITH  
COMPANIES,  
NEVADA

ENGINEER  
ARCHITECT  
PLANNING  
LANDSCAPE ARCHITECT  
SURVEYOR  
CIVIL ENGINEER  
ELECTRICAL ENGINEER  
MECHANICAL ENGINEER  
P.L.C. 1987

AMENDED MAP OF  
A PORTION OF SUMMERTRAIL  
CLARK COUNTY, NEVADA  
-SEE TRAILS - UNIT NO. 50-

SHEET 3 OF 9

BOOK 25, PAGE 84  
RECORDED 04/27/87