

96112

0069

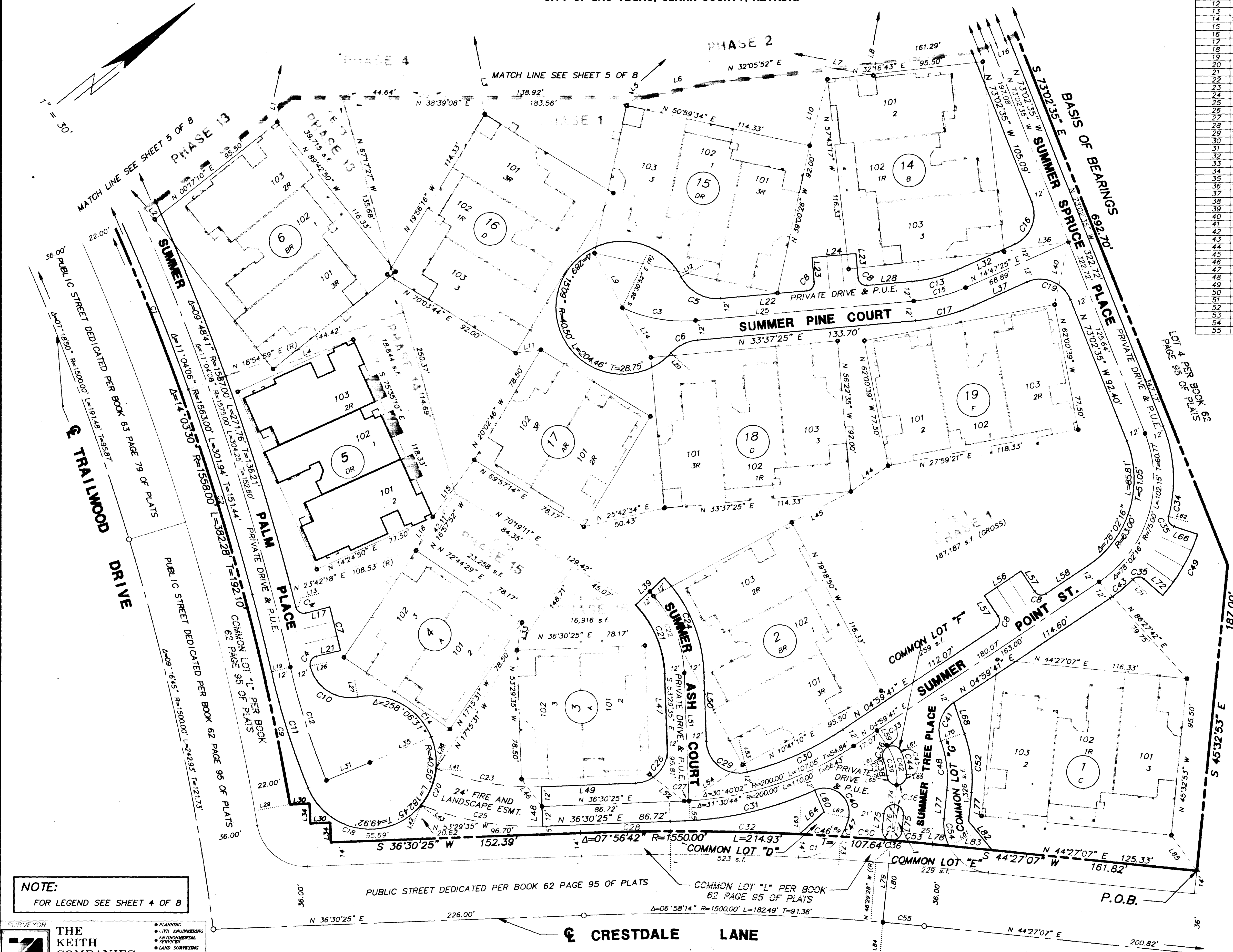
LINE	BEARING	DISTANCE
L80	N 45°32'53" W	83.68'
L81	S 121°3'16" W (R)	0.00'
L82	N 89°27'07" E	22.63'
L83	N 44°27'07" E	26.38'
L84	N 46°31'21" W (R)	0.00'
L85	N 86°44'02" W	26.58'

# AMENDED MAP OF A PORTION OF SUMMERTRAIL

**SUMMERLIN VILLAGE 7 - THE TRAILS - UNIT NO. 2C**  
 A CONDOMINIUM COMMON INTEREST COMMUNITY  
 BEING ALL OF LOT 5 AS SHOWN BY MAP THEREOF ON FILE IN BOOK 62 PAGE 95 OF PLATS RECORDED IN THE CLARK COUNTY RECORDER'S OFFICE, CLARK COUNTY, NEVADA, LYING WITHIN SECTION 24 OF TOWNSHIP 20 SOUTH RANGE 59 EAST AND SECTION 19 OF TOWNSHIP 20 SOUTH, RANGE 60 EAST, M.D.M., CITY OF LAS VEGAS, CLARK COUNTY, NEVADA.

CURVE	DELTA	RADIUS	LENGTH	TANGENT
1	04°30'09"	1558.00'	122.43'	61.25'
2	04°47'19"	1558.00'	130.21'	65.14'
3	29°51'43"	88.00'	45.86'	23.47'
4	89°49'12"	5.00'	7.84'	4.98'
5	67°15'46"	25.00'	29.35'	16.63'
6	41°59'33"	25.00'	35.00'	9.39'
7	00°58'24"	1607.00'	27.30'	1.65'
8	90°00'00"	5.00'	7.85'	5.00'
9	04°46'02"	1558.00'	129.63'	64.85'
10	87°24'41"	25.00'	38.14'	23.90'
11	09°13'34"	450.00'	74.39'	37.28'
12	09°13'34"	450.00'	72.46'	36.31'
13	18°50'00"	88.00'	28.93'	14.59'
14	105°38'36"	40.50'	74.67'	53.40'
15	18°50'00"	100.00'	32.87'	16.58'
16	87°50'00"	20.00'	30.58'	19.28'
17	18°50'00"	112.00'	36.81'	18.57'
18	11°59'33"	40.50'	83.40'	67.39'
19	92°10'00"	20.00'	32.17'	20.77'
20	34°28'22"	40.50'	24.37'	12.57'
21	41°34'50"	64.00'	46.43'	24.30'
22	41°34'50"	76.00'	55.15'	28.65'
23	23°48'59"	158.00'	65.68'	33.32'
24	41°34'50"	88.00'	63.86'	33.41'
25	23°54'33"	182.00'	75.95'	38.53'
26	90°00'00"	20.00'	31.42'	20.00'
27	00°50'42"	200.00'	2.95'	1.47'
28	02°01'25"	1550.00'	54.74'	27.37'
29	102°00'25"	20.00'	35.61'	24.70'
30	19°30'19"	188.00'	64.00'	32.31'
31	22°04'19"	212.00'	91.57'	41.53'
32	22°54'42"	1550.00'	78.56'	39.29'
33	01°58'27"	37.00'	1.27'	0.64'
34	36°51'24"	87.00'	55.96'	28.99'
35	86°53'04"	5.00'	7.58'	4.74'
36	180°00'00"	6.00'	18.85'	—
37	85°20'57"	6.00'	8.94'	5.53'
38	8°52'49"	31.00'	10.22'	5.15'
39	37°28'59"	37.00'	24.21'	12.58'
40	125°51'58"	15.00'	32.95'	29.35'
41	76°02'17"	20.00'	26.54'	15.64'
42	39°27'26"	37.00'	25.48'	13.27'
43	11°50'40"	87.00'	17.99'	9.02'
44	18°52'49"	43.00'	14.17'	7.15'
45	94°39'03"	6.00'	9.91'	6.57'
46	00°56'00"	1550.00'	25.29'	12.62'
47	23°49'46"	30.00'	12.48'	6.33'
48	25°29'38"	68.00'	30.26'	15.38'
49	23°06'20"	107.00'	43.15'	21.87'
50	01°08'41"	1550.00'	30.97'	15.48'
51	90°00'00"	6.00'	9.42'	6.00'
52	24°59'23"	83.00'	36.20'	18.39'
53	00°56'22"	1550.00'	25.41'	12.71'
54	32°13'51"	30.00'	16.88'	8.67'
55	00°58'28"	1500.00'	25.51'	12.76'

LINE	BEARING	DISTANCE
L1	N 45°49'42" W	12.05'
L2	N 85°10'14" E	20.96'
L3	N 62°46'42" W	53.89'
L4	N 18°50'42" E	32.42'
L5	N 02°37'26" W	17.48'
L6	N 26°21'16" E	41.90'
L7	N 48°58'46" E	116.33'
L8	N 41°01'14" W	95.50'
L9	N 78°29'22" W	57.42'
L10	N 36°11'46" W	41.74'
L11	N 30°42'46" E	15.50'
L12	S 10°53'11" W (R)	0.00'
L13	S 24°13'31" W (R)	0.00'
L14	N 81°12'54" W	34.91'
L15	N 15°16'43" W	42.85'
L16	N 16°57'25" E	29.00'
L17	N 24°24'19" E (R)	15.01'
L18	N 24°39'39" W	22.83'
L19	N 23°59'22" W	0.00'
L20	N 81°38'02" W	0.00'
L21	N 25°22'43" E (R)	15.01'
L22	N 33°37'25" E	52.51'
L23	N 56°22'35" W	15.00'
L24	N 33°37'25" E	27.00'
L25	N 33°37'25" E	133.70'
L26	S 25°33'31" W (R)	0.00'
L27	S 61°51'10" E (R)	0.00'
L28	N 33°37'25" E	27.60'
L29	N 28°10'20" E	0.00'
L30	S 36°30'25" W	12.00'
L31	N 16°15'21" E (R)	28.50'
L32	N 14°47'25" E	38.08'
L33	N 40°38'42" W	17.23'
L34	N 53°39'35" W	12.00'
L35	N 16°08'56" E	52.87'
L36	N 30°07'04" E	39.97'
L37	N 14°47'25" E	35.65'
L38	S 29°40'36" E (R)	0.00'
L39	N 36°30'25" W	24.00'
L40	N 38°37'57" W	39.18'
L41	N 43°47'26" E (R)	0.00'
L42	S 29°35'02" E (R)	0.00'
L43	N 78°15'48" E (R)	0.00'
L44	N 04°05'16" W	27.48'
L45	N 11°21'17" E	40.68'
L46	N 88°20'28" W	20.71'
L47	N 53°29'35" W	45.85'
L48	N 53°29'35" W	29.00'
L49	N 36°30'25" W	57.67'
L50	N 53°29'35" W	42.17'
L51	N 53°29'35" W	27.83'
L52	N 76°19'47" E	26.55'
L53	S 65°30'00" E (R)	20.00'
L54	N 44°07'51" W	39.48'
L55	S 54°20'17" E (R)	0.00'
L56	N 04°59'41" E	27.00'
L57	N 85°00'19" W	15.00'
L58	N 04°59'41" E	31.00'
L59	N 85°00'19" W	10.77'
L60	N 75°33'53" W (R)	14.36'
L61	N 16°16'13" E (R)	0.00'
L62	N 53°48'49" E (R)	0.00'
L63	N 48°33'56" W (R)	0.00'
L64	N 03°01'31" E (R)	20.36'
L65	N 35°09'02" E (R)	0.00'
L66	N 56°55'45" E (R)	15.14'
L67	N 50°18'05" E (R)	0.00'
L68	N 70°32'16" W	20.14'
L69	N 74°07'51" W	0.00'
L70	S 18°57'29" W (R)	0.00'
L71	N 83°09'01" E (R)	0.00'
L72	N 80°02'05" E (R)	15.14'
L73	N 47°37'56" W (R)	0.00'
L74	N 45°32'53" W	12.00'
L75	N 45°32'53" W	9.67'
L76	N 45°32'53" W (R)	21.67'
L77	N 45°32'53" W	17.46'
L78	N 44°27'07" E	10.11'
L79	N 45°32'53" W	50.01'



**NOTE:**  
FOR LEGEND SEE SHEET 4 OF 8

**THE KEITH COMPANIES, NEVADA**

- PLANNING
- CIVIL ENGINEERING
- ENVIRONMENTAL SERVICES
- LAND SURVEYING
- DESIGN
- CONSTRUCTION SERVICES
- UTILITY WORK
- WATER RESOURCES

AMENDED MAP OF A PORTION OF SUMMERTRAIL AT SUMMERLIN VILLAGE 7 - THE TRAILS - UNIT 2C  
SHEET 6 OF 9

BOOK 76 PAGE 95  
Amended 4/27/20

R:\SIA\544\544M05 Mod Aug 26 08 46 1996 COLOR 650C 486-5042 TKM:1 CFC RON  
 HP Designer: 650C C:\ACAD2002\HP\ACAD2002\TKM:1 CFC 11 HP-GL/2 ADI 4.2 Ver. 1.3 by Hewlett-Packard

