

76112

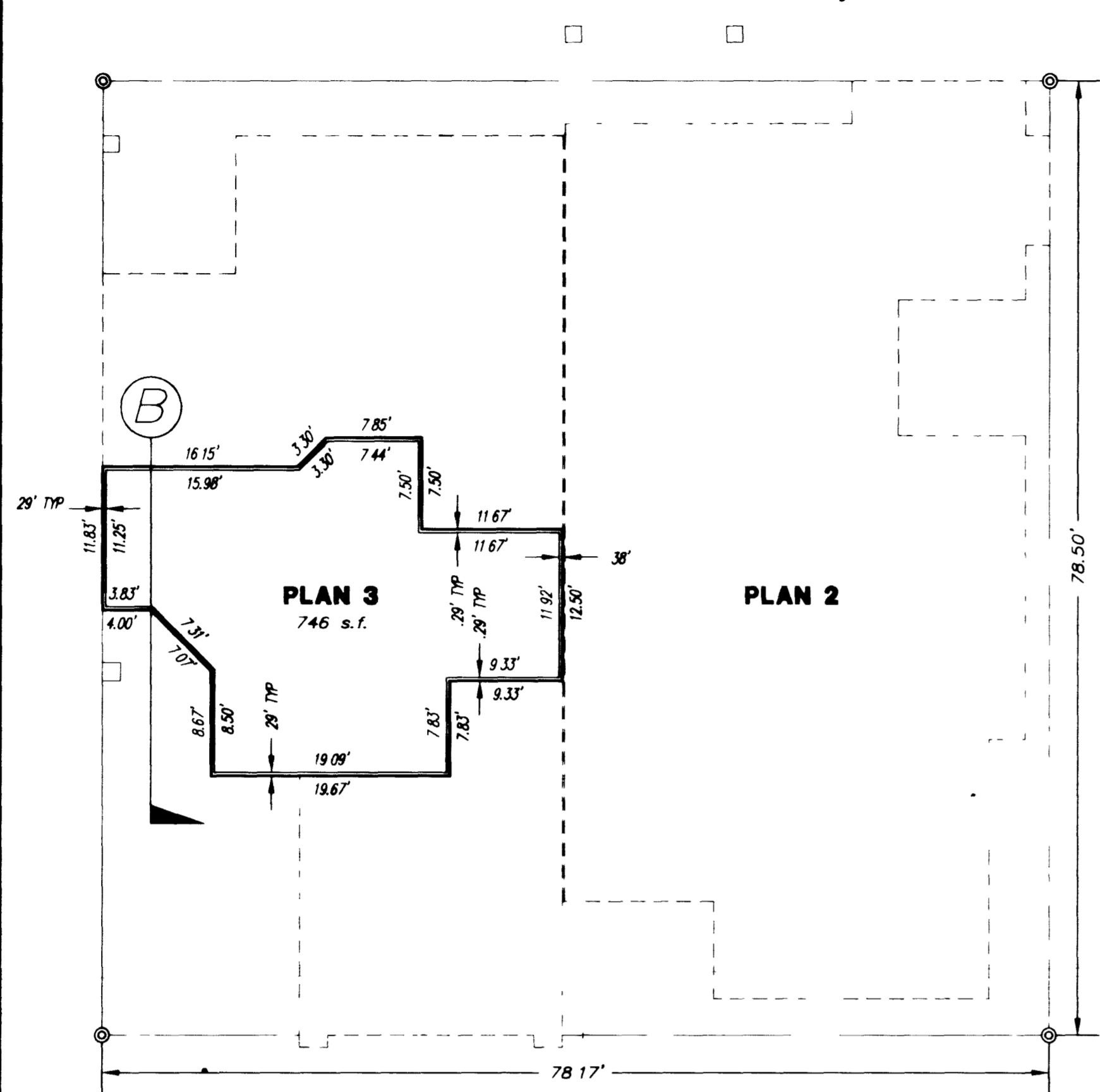
00659

AMENDED MAP OF A PORTION OF SUMMERTRAIL

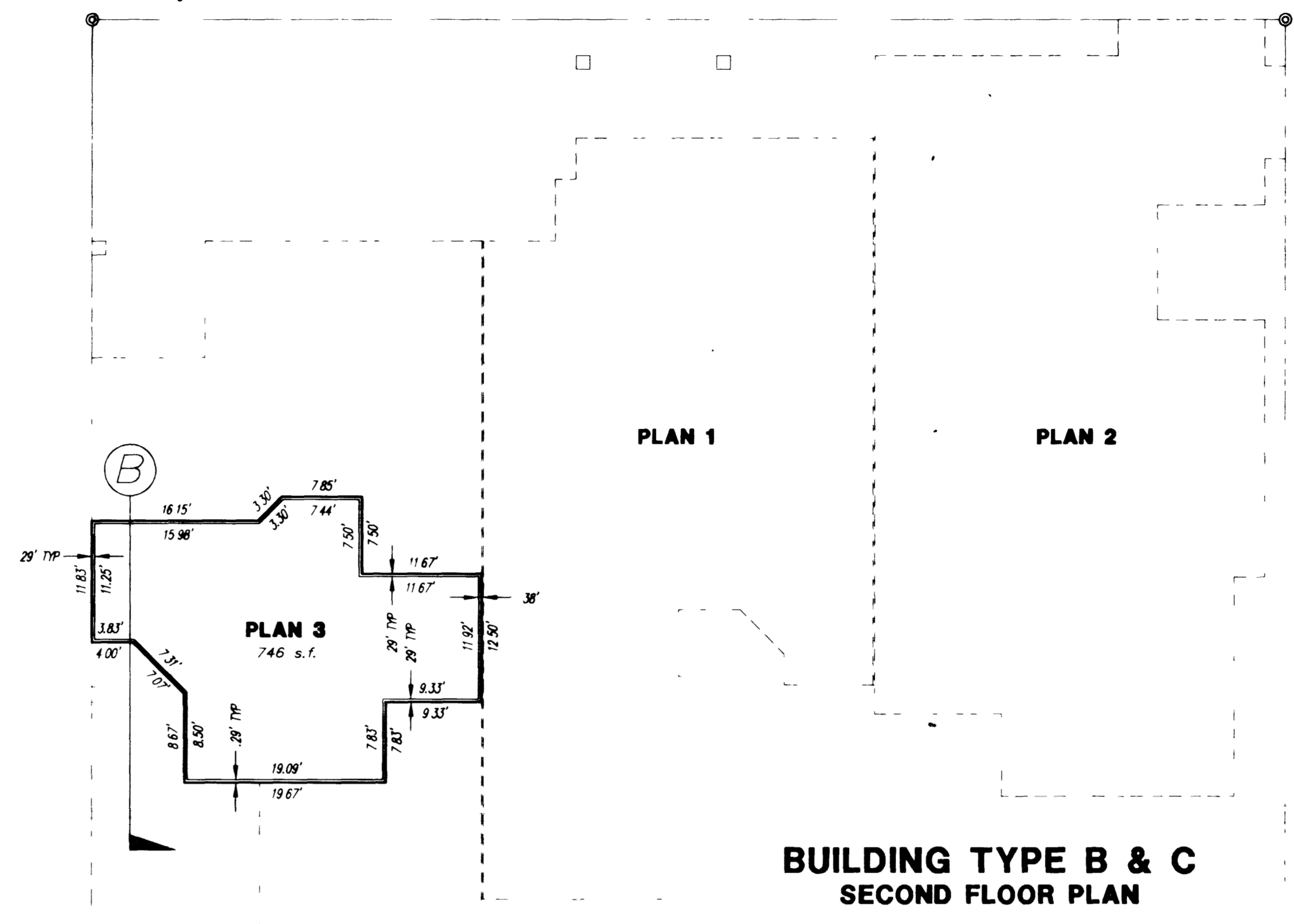
SUMMERLIN VILLAGE 7 - THE TRAILS - UNIT NO. 2C

A CONDOMINIUM COMMON INTEREST COMMUNITY

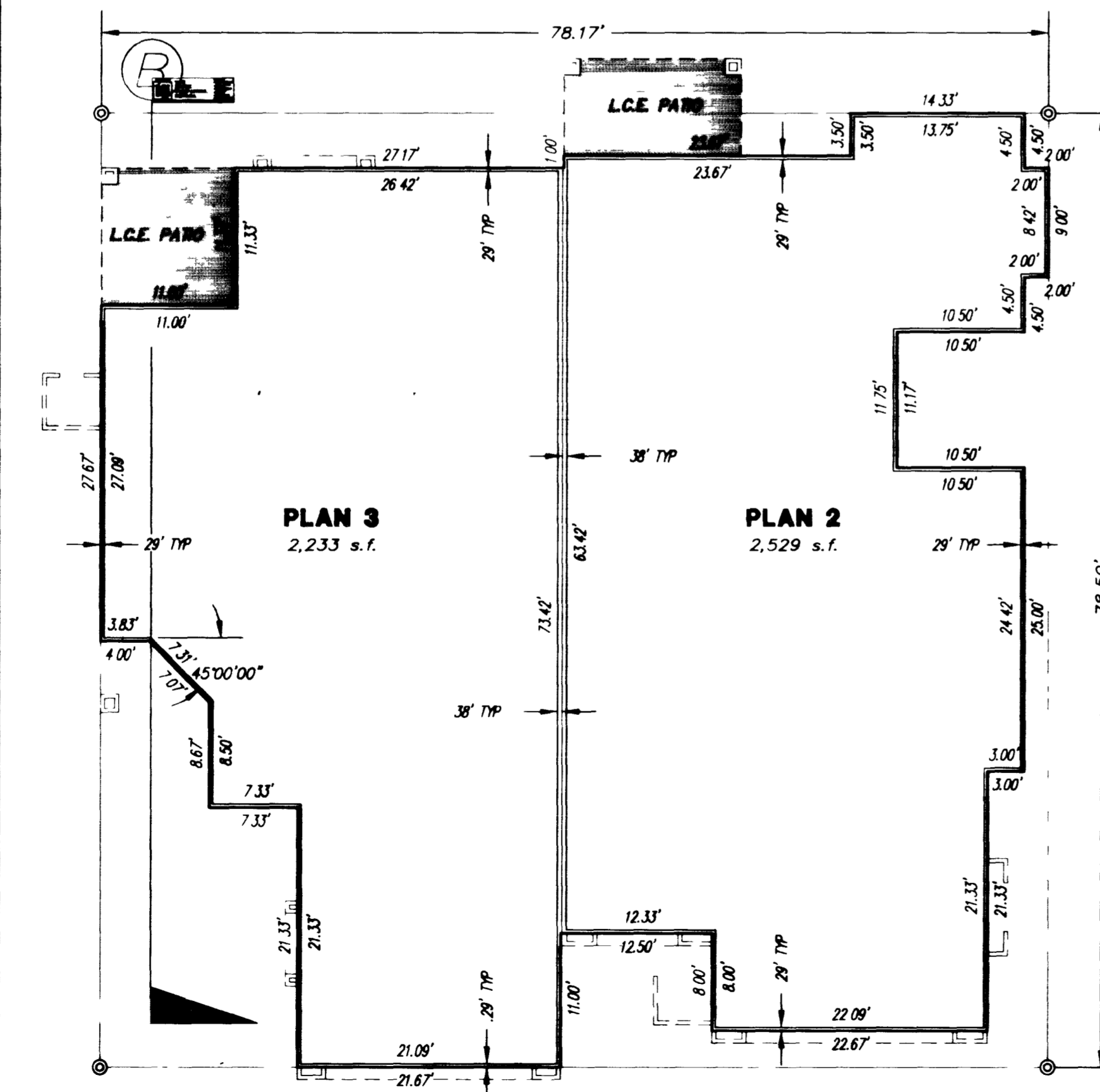
BEING ALL OF LOT 5 AS SHOWN BY MAP THEREOF ON FILE IN BOOK 62 PAGE 95 OF PLATS RECORDED IN THE CLARK COUNTY RECORDER'S OFFICE, CLARK COUNTY, NEVADA, LYING WITHIN SECTION 24 OF TOWNSHIP 20 SOUTH RANGE 59 EAST AND 19 OF TOWNSHIP 20 SOUTH, RANGE 60 EAST, M.D.M., CITY OF LAS VEGAS, CLARK COUNTY, NEVADA.



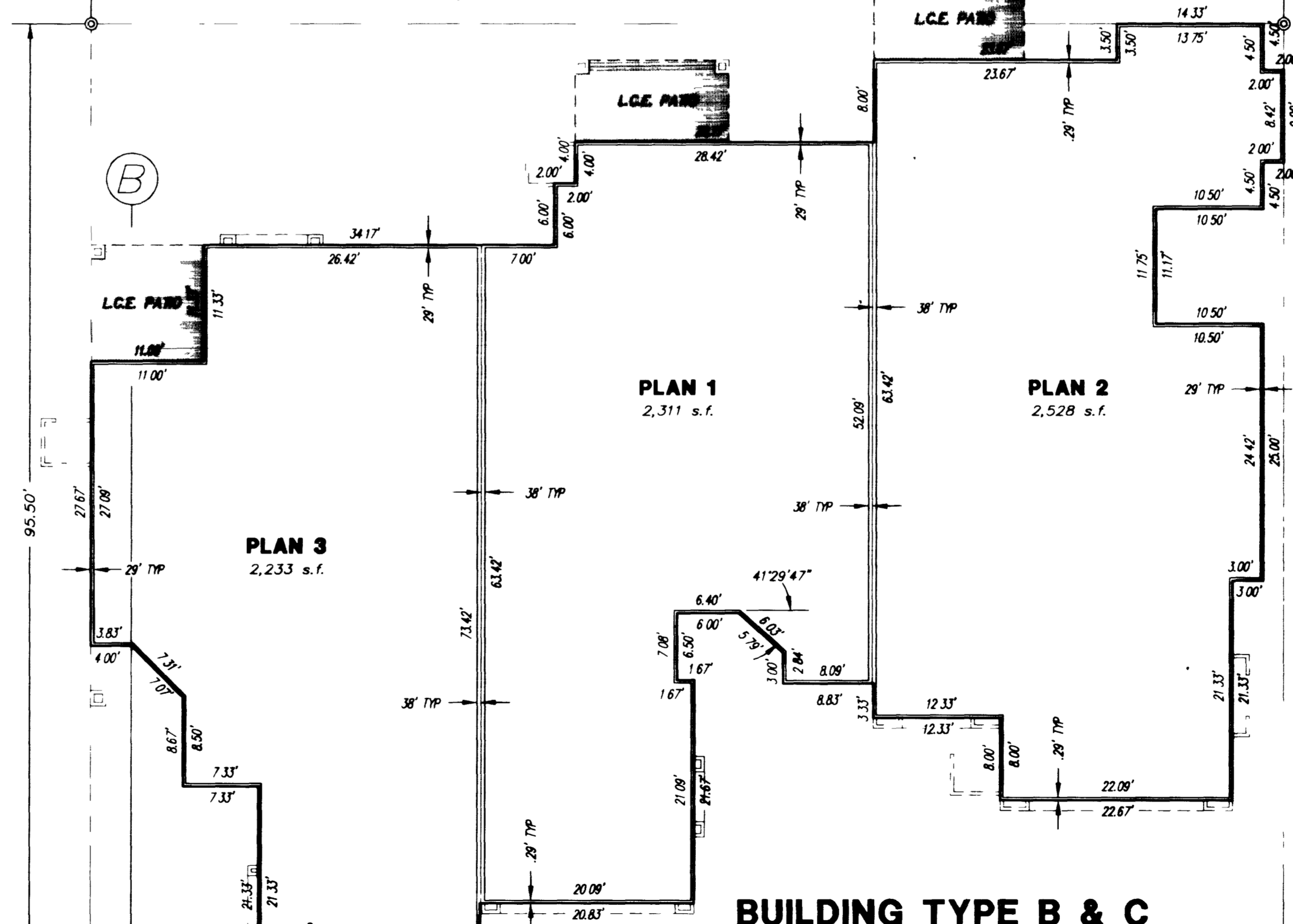
**BUILDING TYPE A
SECOND FLOOR PLAN**



**BUILDING TYPE B & C
SECOND FLOOR PLAN**



**BUILDING TYPE A
FIRST FLOOR PLAN**

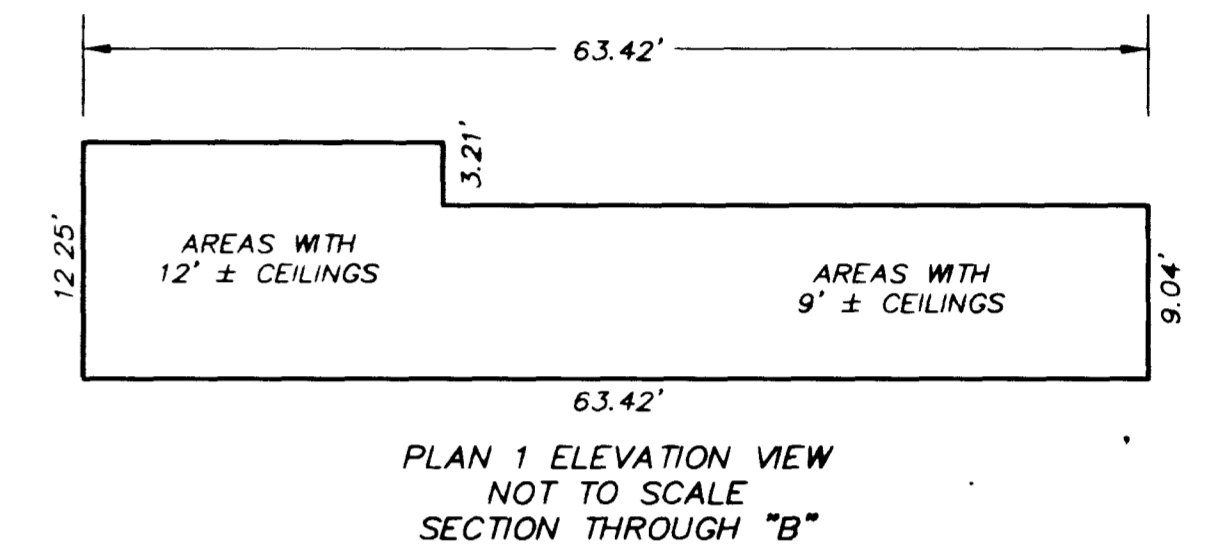


**BUILDING TYPE B & C
FIRST FLOOR PLAN**

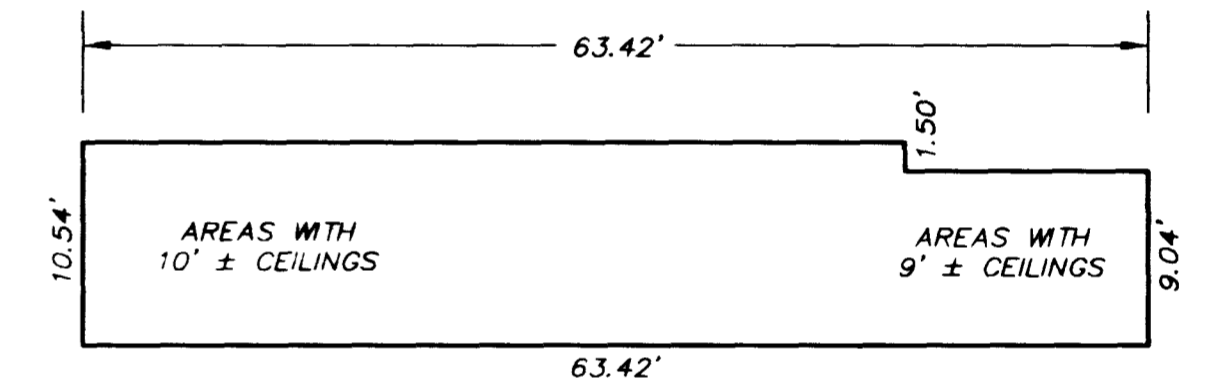
LEGEND AND NOTES

- AC AIR CONDITIONER PADS
- L.C.E. LIMITED COMMON ELEMENTS
- ⊙ BUILDING TIE POINTS

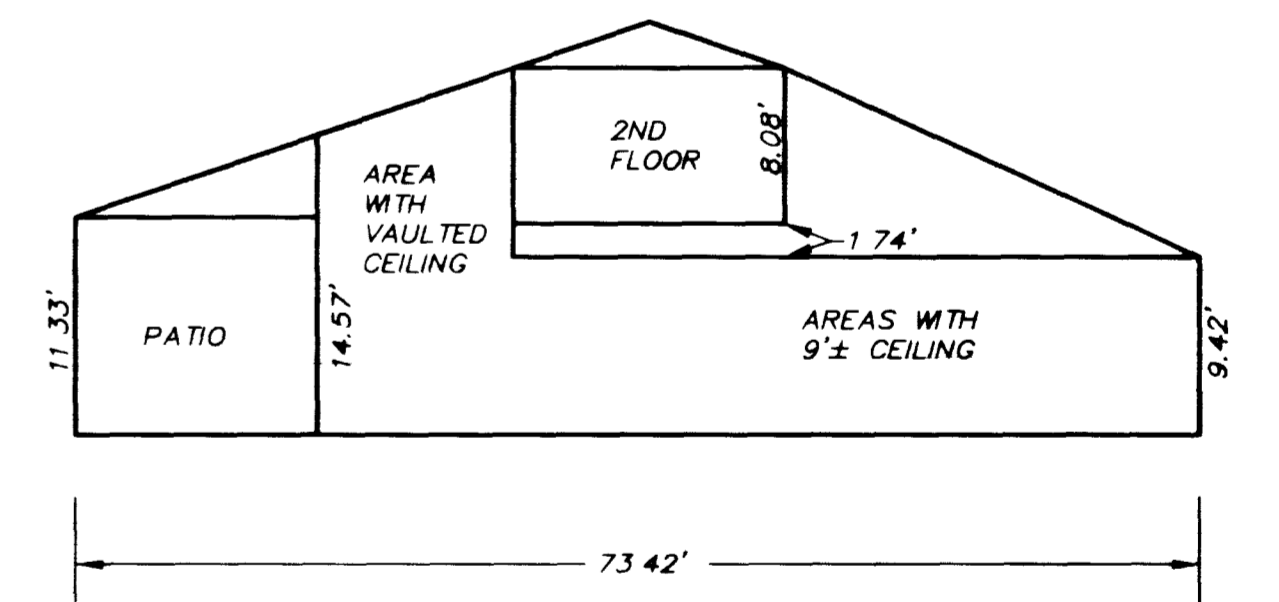
1. THE DETAILS AND SECTIONS SHOWN HEREON ARE ILLUSTRATIVE OF THE BUILDINGS TO BE CONSTRUCTED. THE BOUNDARIES OF THE UNIT GRANTED ARE THE INTERIOR FACE OF STUD OF THE EXTERIOR WALLS AND PARTY WALLS. ADDITIONALLY THE BOUNDARIES OF THE UNIT GRANTED SHALL COMPLY WITH THE PROVISIONS OF NEVADA REVISED STATUTES CHAPTER 116.2102.
2. EXTERIOR AND INTERIOR WALL BEARINGS ARE PARALLEL OR PERPENDICULAR TO THOSE SHOWN AS INDIVIDUAL BUILDING TIES ON SHEET 3, 4, 5, 6 AND 7 OF 10.
3. L.C.E. DESIGNATES LIMITED COMMON ELEMENTS OF FIRST FLOOR PATIOS AND PORCHES AND SECOND FLOOR BALCONIES AND PORCHES TO ADJACENT UNITS ONLY.
4. ALL EXTERIOR WALLS ARE 0.29' THICK UNLESS DESIGNATED



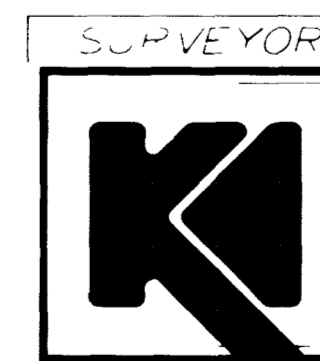
PLAN 1 ELEVATION VIEW
NOT TO SCALE
SECTION THROUGH "B"



PLAN 2 ELEVATION VIEW
NOT TO SCALE
SECTION THROUGH "B"



PLAN 3 ELEVATION VIEW
NOT TO SCALE
SECTION THROUGH "B"



THE KEITH COMPANIES, NEVADA

- PLANNING
- CIVIL ENGINEERING
- ENVIRONMENTAL SERVICES
- LAND SURVEYING
- DEVELOPER SERVICES
- PUBLIC WORKS
- WATER RESOURCES

444 EAST WARM SPRINGS ROAD SUITE 110 LAS VEGAS NV 89119 (702)263-8206 FAX(702)263-8529

AMENDED MAP OF A PORTION OF SUMMERTRAIL - THE TRAILS - UNIT NO. 2C AT SUMMERLIN VLLAGE 7
SCALE: 1" = 10'
SHEET 7 OF 9

R:\STA\441544M07 Mon Aug 26 08 51:41 1996 COLOR B50C 466-5042 TKCN1 CFG IRON HP DesignJet 650C C:\ACAD\2\DRW\HP6L\TKCN1 CFG 11 HP-GL/2 A01 4 2 Ver. 1.3 by Hewlett-Packard

3450

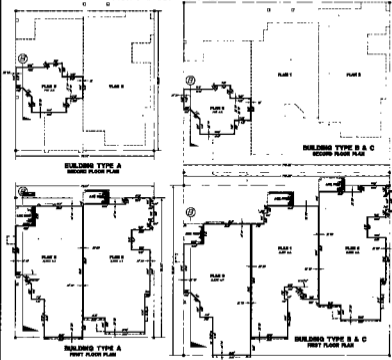
BOOK 76 PAGE 95
Amended 4271-2e

96 112

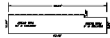
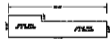
00617

AMENDED MAP OF A PORTION OF SUMMITRAIL

EXHIBIT A (SEE THE EAST SIDE OF SHEET 96 112 FOR THE WEST SIDE & TAMP STREETING EXP.)



- LEGEND AND NOTES**
1. ALL DIMENSIONS ARE IN FEET AND INCHES.
 2. ALL WALLS ARE 12" THICK UNLESS OTHERWISE NOTED.
 3. ALL DOORS ARE 36" WIDE UNLESS OTHERWISE NOTED.
 4. ALL WINDOWS ARE 48" WIDE UNLESS OTHERWISE NOTED.
 5. ALL CEILING ARE 8' HIGH UNLESS OTHERWISE NOTED.
 6. ALL FLOORS ARE 4" CONCRETE ON 8" GRAVEL UNLESS OTHERWISE NOTED.



THE KEITH COMPANIES, NEVADA

REGISTERED ARCHITECTS

1000 WEST WASHINGTON AVENUE, SUITE 1000, LAS VEGAS, NEVADA 89102

AMENDED MAP OF A PORTION OF SUMMITRAIL
 SHEET 96 112 OF 112
 SHEET 7 OF 8

BOOK 12, PAGE 97

A PORTION OF THE MAP IS NOT REPRODUCED HERE