

96!!!

00659

# AMENDED MAP OF A PORTION OF SUMMERTRAIL

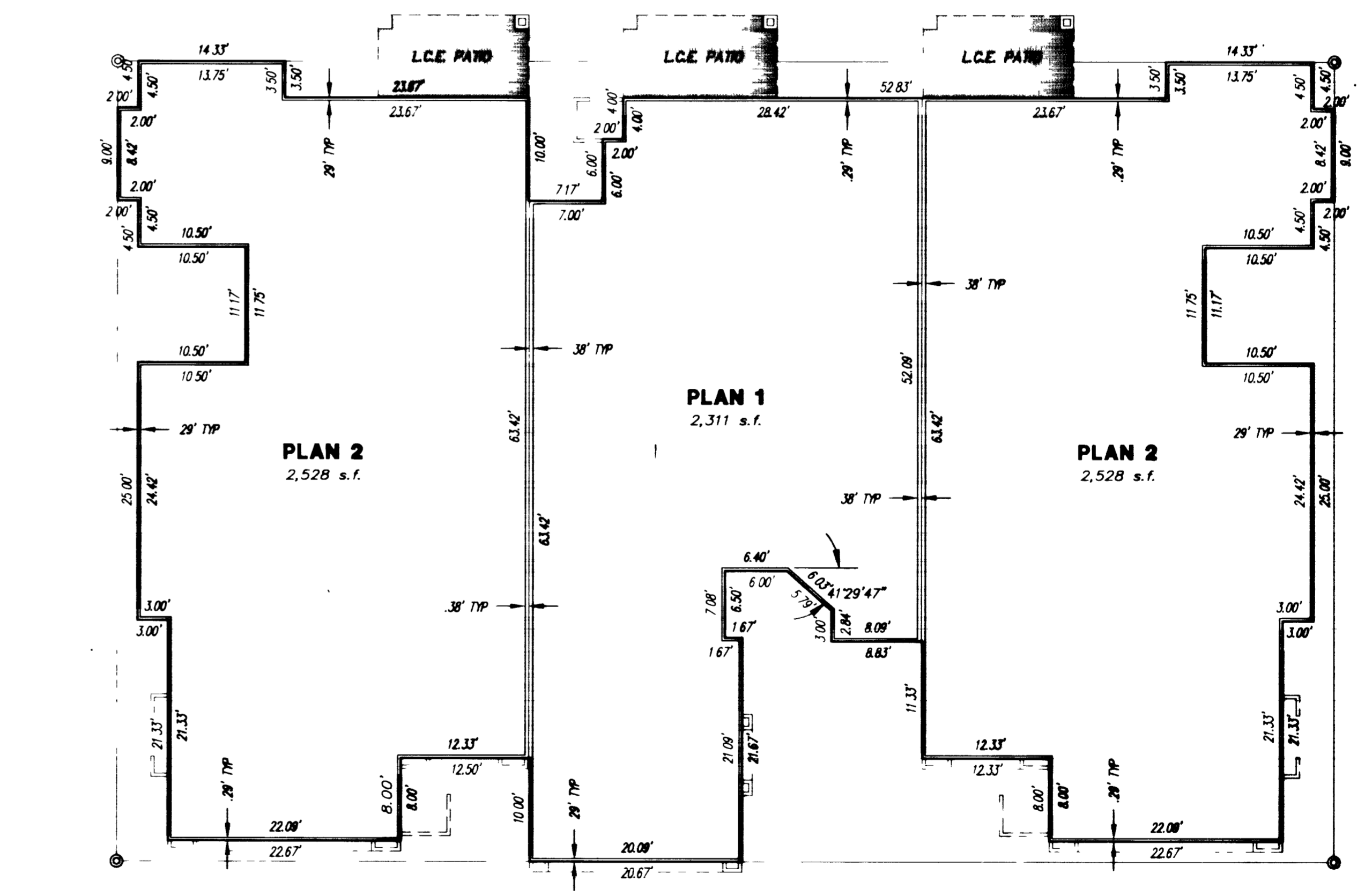
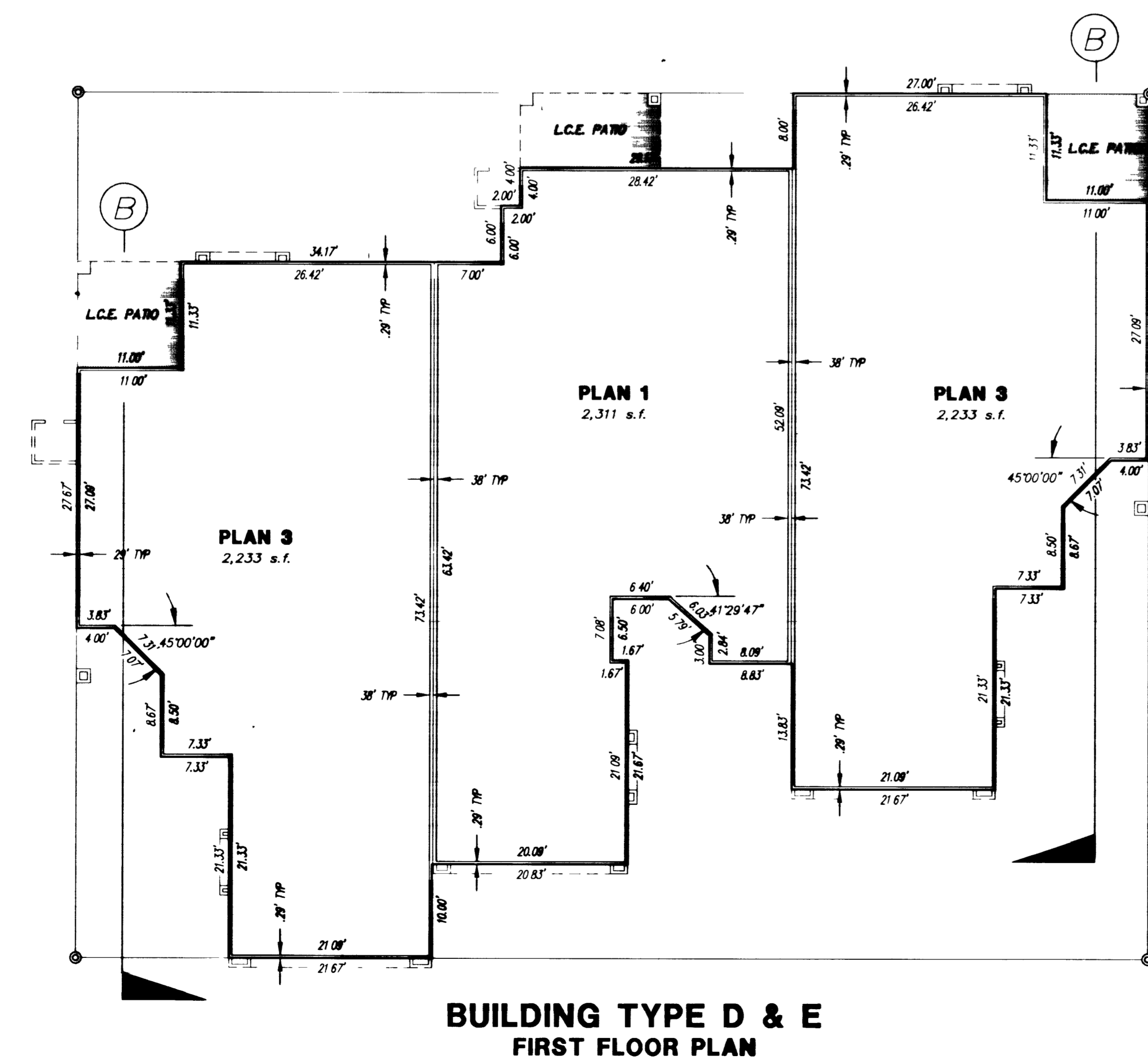
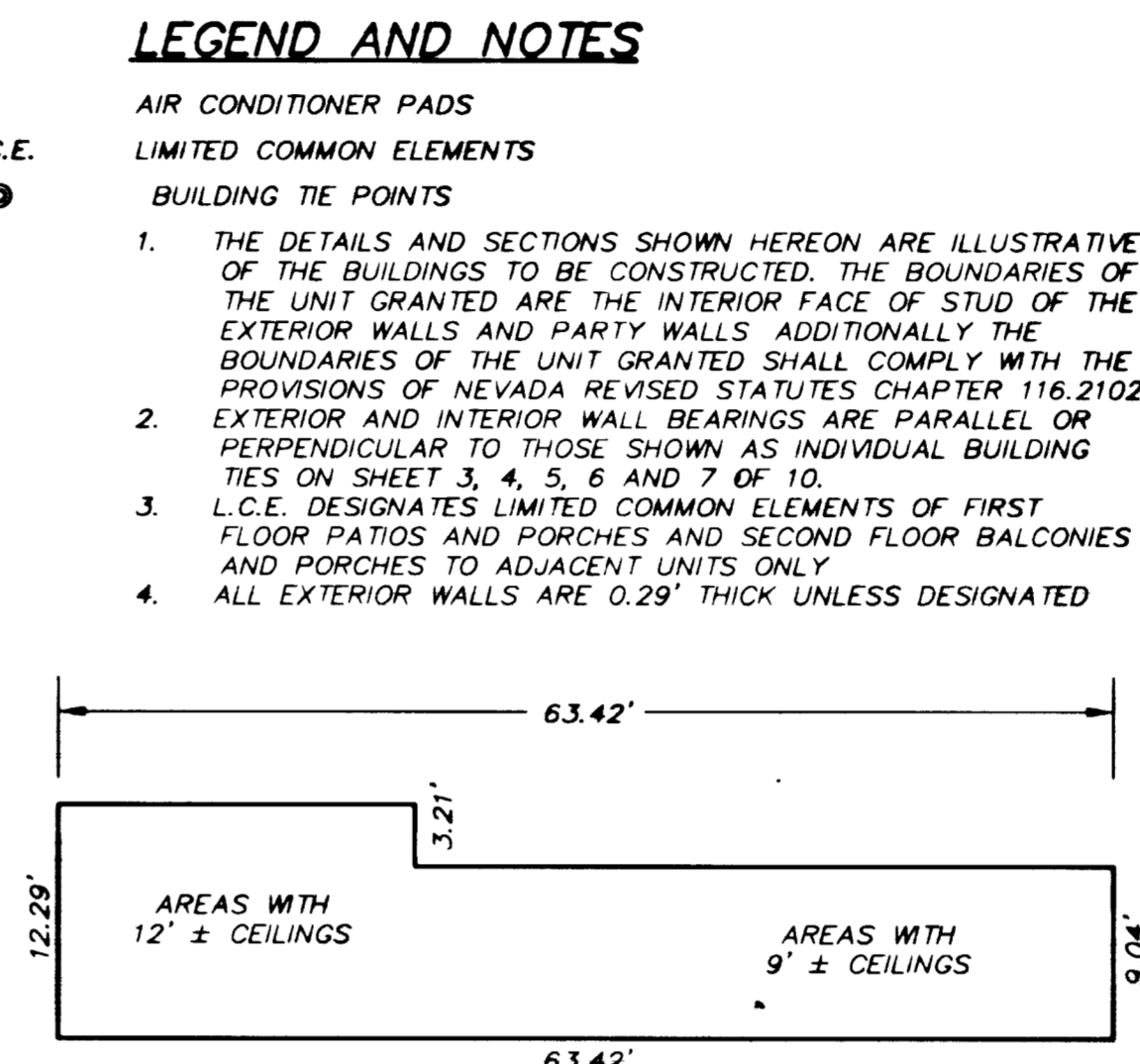
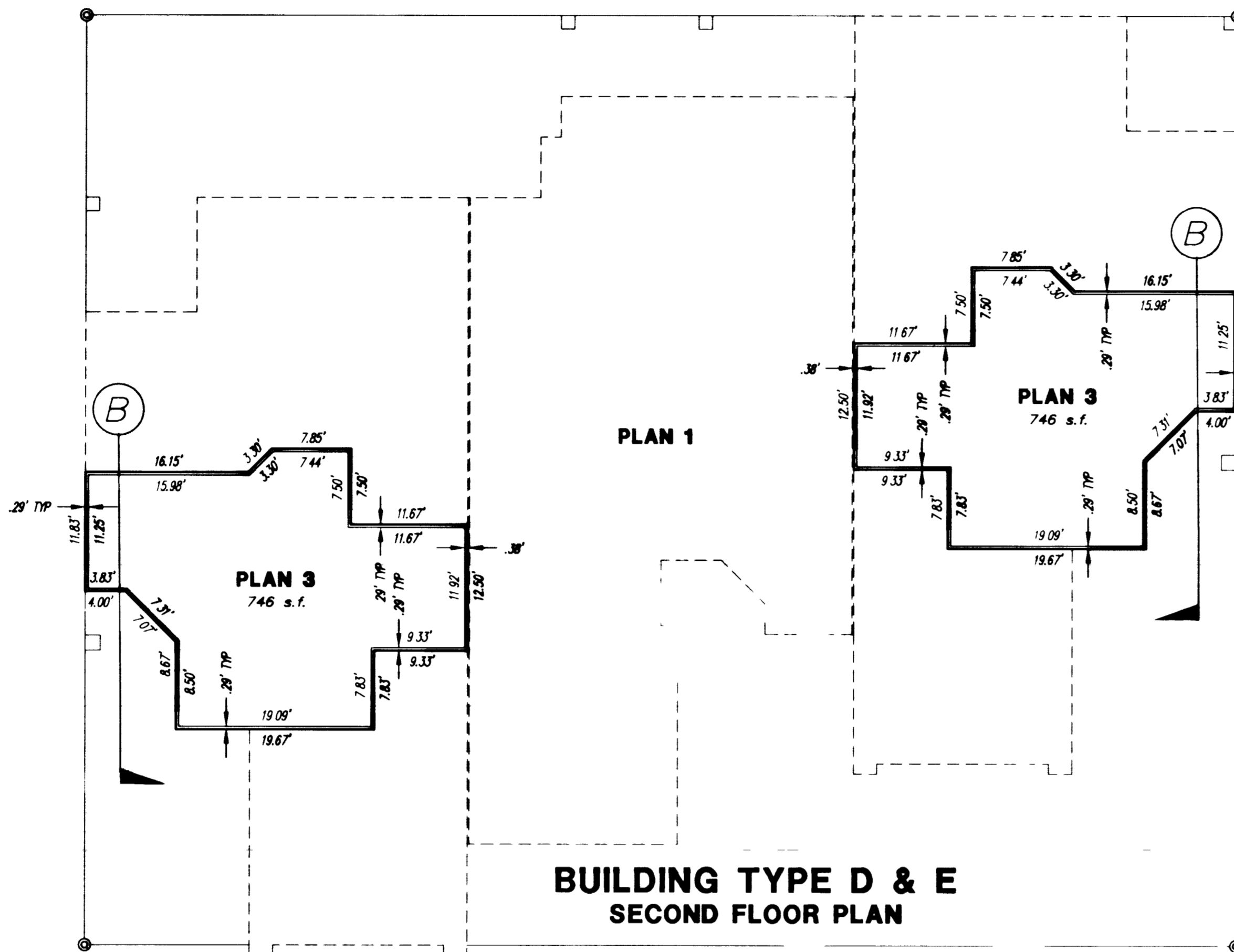
## SUMMERLIN VILLAGE 7 - THE TRAILS - UNIT NO. 2C

A CONDOMINIUM COMMON INTEREST COMMUNITY

BEING ALL OF LOT 5 AS SHOWN BY MAP THEREOF ON FILE IN BOOK 62 PAGE 95 OF PLATS RECORDED IN THE CLARK COUNTY RECORDER'S OFFICE, CLARK COUNTY, NEVADA, LYING WITHIN SECTION 24 OF TOWNSHIP 20 SOUTH RANGE 59 EAST AND SECTION 19 OF TOWNSHIP 20 SOUTH, RANGE 60 EAST, M.D.M., CITY OF LAS VEGAS, CLARK COUNTY, NEVADA.

### LEGEND AND NOTES

- AC AIR CONDITIONER PADS
  - L.C.E. LIMITED COMMON ELEMENTS
  - BUILDING TIE POINTS
1. THE DETAILS AND SECTIONS SHOWN HEREON ARE ILLUSTRATIVE OF THE BUILDINGS TO BE CONSTRUCTED. THE BOUNDARIES OF THE UNIT GRANTED ARE THE INTERIOR FACE OF STUD OF THE EXTERIOR WALLS AND PARTY WALLS. ADDITIONALLY THE BOUNDARIES OF THE UNIT GRANTED SHALL COMPLY WITH THE PROVISIONS OF NEVADA REVISED STATUTES CHAPTER 116.2102.
  2. EXTERIOR AND INTERIOR WALL BEARINGS ARE PARALLEL OR PERPENDICULAR TO THOSE SHOWN AS INDIVIDUAL BUILDING TIES ON SHEET 3, 4, 5, 6 AND 7 OF 10.
  3. L.C.E. DESIGNATES LIMITED COMMON ELEMENTS OF FIRST FLOOR PATIOS AND PORCHES AND SECOND FLOOR BALCONIES AND PORCHES TO ADJACENT UNITS ONLY.
  4. ALL EXTERIOR WALLS ARE 0.29' THICK UNLESS DESIGNATED.



SCALE: 1" = 10'



THE KEITH COMPANIES, NEVADA

- PLANNING
- CIVIL ENGINEERING
- ENVIRONMENTAL SERVICES
- LAND SURVEYING
- DEVELOPER SERVICES
- PUBLIC WORKS
- WATER RESOURCES

AMENDED MAP OF A PORTION OF SUMMERTRAIL AT SUMMERLIN VILLAGE 7 - THE TRAILS - UNIT NO. 2C  
SHEET 8 OF 9

R:\STA\544\544M08 Mon Aug 26 08:57:49 1996 COLOR 650C 486-5042 TKONI CFG RON HP DesignJet 650C C:\ACAD\2\DRW\PRBL2\TKONI CFG 11 HP-GL/2 ADJ 4.2 Ver. 1.3 by Hewlett-Packard

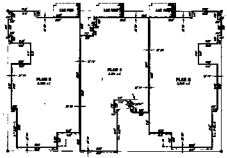
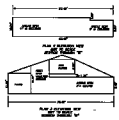
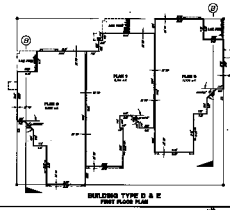
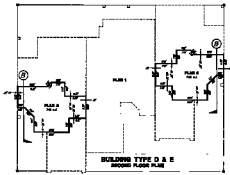
2449

BOOK 76 PAGE 95  
Amended 4271-2C

### AMENDED MAP OF A PORTION OF SUMMITRAL.

MEMBERVILLE VILLAGE 7 - THE TRAILS - CITY NO. 80

A CERTAIN PORTION OF LOT 50  
WITHIN ALL OF LOT 5 AS SHOWN BY MAP THEREON ON FILE IN BOOK 80 PAGE 86 OF PLATS  
RECORDED IN THE CLARK COUNTY RECORDS'S OFFICE, CLARK COUNTY, NEVADA, LYING  
WITHIN SECTION 84 OF TOWNSHIP 20 SOUTH RANGE 80 EAST AND SECTION 20 OF TOWNSHIP  
20 SOUTH RANGE 80 EAST, S.E.1/4, CITY OF LAS VEGAS, CLARK COUNTY, NEVADA.



SCALE 1" = 10'



**THE KEITH COMPANIES, NEVADA**

- ARCHITECT
- ENGINEER
- SURVEYOR
- LAND SURVEYOR
- CIVIL ENGINEER
- ELECTRICAL ENGINEER
- MECHANICAL ENGINEER
- PLUMBING ENGINEER
- SANITARY ENGINEER
- STRUCTURAL ENGINEER
- THERMAL ENGINEER
- WATER ENGINEER
- WIND ENGINEER

AMENDED MAP OF A PORTION OF SUMMITRAL, CITY OF LAS VEGAS, CLARK COUNTY, NEVADA. SHEET 6 OF 9

1. THE INFORMATION CONTAINED HEREIN IS UNCLASSIFIED  
 DATE 08-11-2010 BY 60322 UCBAW/STP