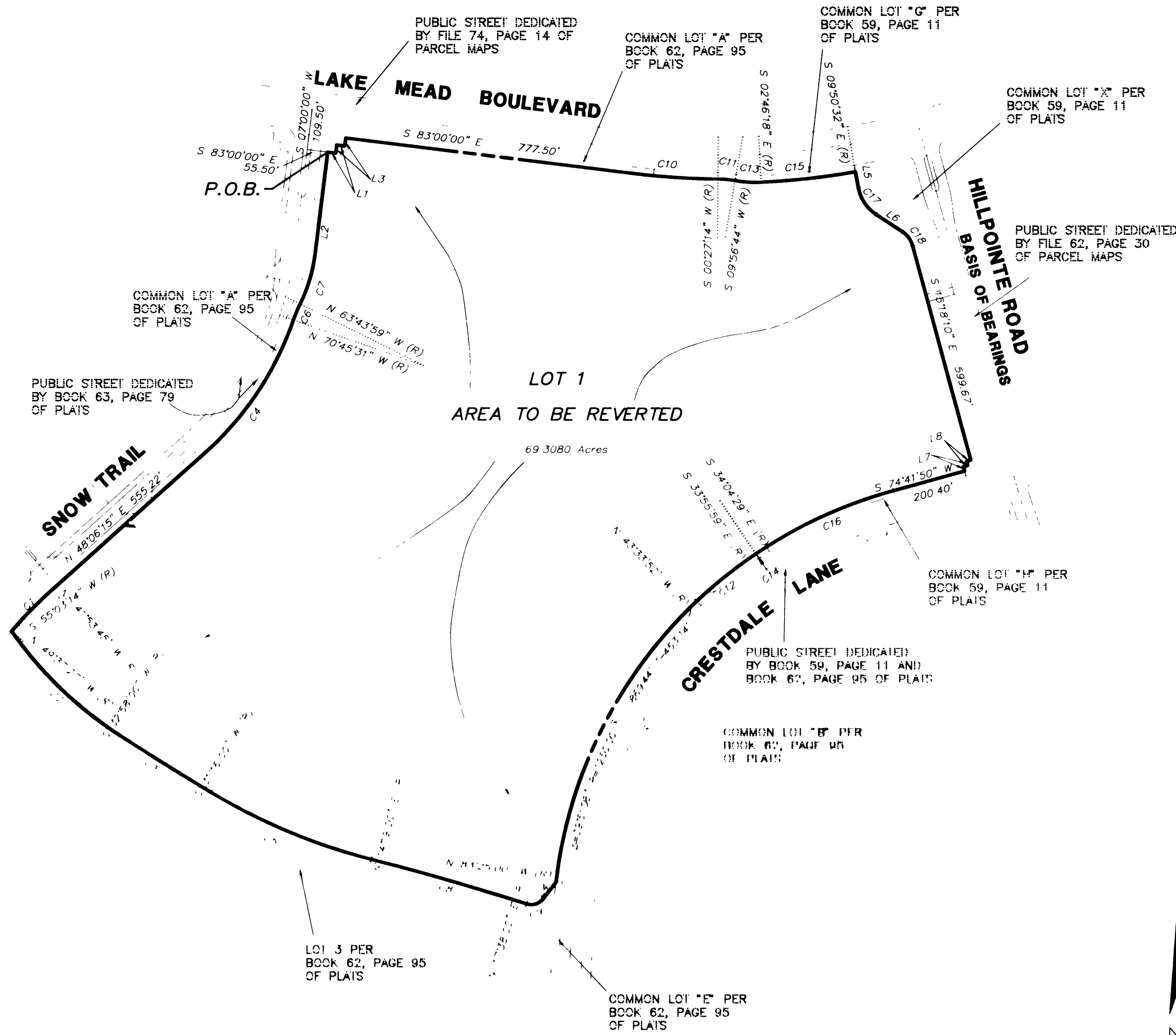
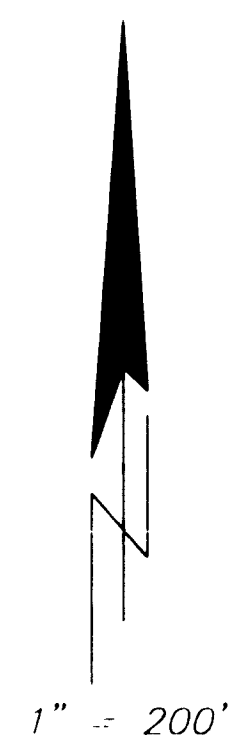


REVERSIONARY FINAL MAP OF
A PORTION OF SUMMERLIN VILLAGE 7 - THE TRAILS - UNIT NO. 1 AND A PORTION OF SUMMERLINE VILLAGE 7 - THE TRAILS - UNIT NO. 2C
FOR THE PURPOSE OF REVERTING TO ACREAGE LOT 7 AS SHOWN BY MAP
THEREOF ON FILE IN BOOK 59, PAGE 11 OF PLATS, AND LOT 1 AS
SHOWN BY MAP THEREOF ON FILE IN BOOK 62, PAGE 95 OF PLATS,
LYING IN THE NORTHEAST QUARTER (NE 1/4) OF SECTION 24,
TOWNSHIP 20 SOUTH, RANGE 59 EAST, THE NORTHWEST QUARTER
(NW 1/4) OF SECTION 19 AND THE SOUTHWEST QUARTER (SW 1/4)
OF SECTION 18, TOWNSHIP 20 SOUTH, RANGE 60 EAST, M.D.M.,
CITY OF LAS VEGAS, CLARK COUNTY, NEVADA.



CURVE	DELTA	RADIUS	LENGTH	TANGENT
1	07°43'42"	1161.00'	156.60'	78.42'
2	22°05'14"	1050.00'	404.77'	204.93'
3	01°42'00"	9900.00'	293.74'	146.88'
4	28°51'46"	864.00'	435.24'	222.34'
5	16°57'00"	1600.00'	473.33'	238.41'
6	07°01'52"	381.00'	48.72'	23.59'
7	19°16'01"	419.00'	140.90'	71.12'
8	03°19'00"	7550.00'	437.04'	218.58'
9	70°11'00"	40.00'	49.00'	28.10'
10	06°32'46"	2065.50'	235.99'	118.12'
11	09°32'30"	282.00'	46.72'	23.41'
12	09°32'53"	1214.00'	204.07'	102.28'
13	12°43'02"	318.00'	70.58'	35.44'
14	00°08'50"	1186.00'	2.93'	1.47'
15	07°04'14"	2076.50'	256.25'	128.29'
16	18°46'19"	1249.50'	408.38'	206.54'
17	45°51'21"	110.00'	88.04'	46.53'
18	41°21'40"	65.00'	46.92'	24.54'

LINE	BEARING	DISTANCE
L1	S 83°00'00" E	25.00'
L2	N 07°00'00" E	277.94'
L3	N 07°00'00" E	22.00'
L4	N 37°00'00" E	57.00'
L5	S 70°48'29" E	44.13'
L6	S 56°39'50" E	85.89'
L7	S 15°18'10" E	12.00'
L8	S 74°41'50" W	12.00'

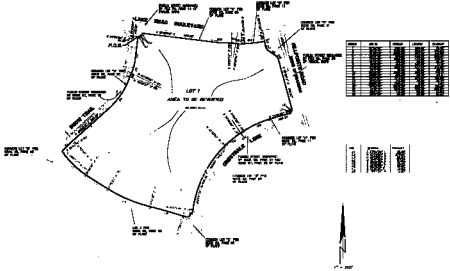


9966
 (see also 4361)

10/17/92

REVERSIONARY FINAL MAP OF

A PORTION OF SUBMERSE VILLAGE 7 - THE TRAILS - UNIT NO. 1 AND A PORTION OF SUBMERSE VILLAGE 7 - THE TRAILS - UNIT NO. 20 FOR THE PURPOSE OF REVERTING TO ACRESAGE LOT 7 AS SHOWN BY MAP THENCE BY MAP THENCE ON FILE IN BOOK 44, PAGE 86 OF PLATS, THENCE BY MAP THENCE ON FILE IN BOOK 44, PAGE 86 OF PLATS, AND LOT 1 AS SHOWN BY MAP THENCE ON FILE IN BOOK 44, PAGE 86 OF PLATS, LYING IN THE NORTHEAST QUARTER ONE 1/4 OF SECTION 24, TOWNSHIP 20 SOUTH, RANGE 88 EAST, THE NORTHWEST QUARTER ONE 1/4 OF SECTION 18 AND THE SOUTHWEST QUARTER ONE 1/4 OF SECTION 18, TOWNSHIP 20 SOUTH, RANGE 80 EAST, N.D.M., CITY OF LAS VEGAS, CLARK COUNTY, NEVADA.



NO.	AREA	ACRES	FRAC.	TOTAL
1	LOT 1	1.2345	1/4	1.2345
2	LOT 7	0.5678	1/4	0.5678
3	RESIDUAL	1.2345	1/4	1.2345
4	RESIDUAL	0.5678	1/4	0.5678
5	RESIDUAL	1.2345	1/4	1.2345
6	RESIDUAL	0.5678	1/4	0.5678
7	RESIDUAL	1.2345	1/4	1.2345
8	RESIDUAL	0.5678	1/4	0.5678
9	RESIDUAL	1.2345	1/4	1.2345
10	RESIDUAL	0.5678	1/4	0.5678
11	RESIDUAL	1.2345	1/4	1.2345
12	RESIDUAL	0.5678	1/4	0.5678
13	RESIDUAL	1.2345	1/4	1.2345
14	RESIDUAL	0.5678	1/4	0.5678
15	RESIDUAL	1.2345	1/4	1.2345
16	RESIDUAL	0.5678	1/4	0.5678
17	RESIDUAL	1.2345	1/4	1.2345
18	RESIDUAL	0.5678	1/4	0.5678
19	RESIDUAL	1.2345	1/4	1.2345
20	RESIDUAL	0.5678	1/4	0.5678
21	RESIDUAL	1.2345	1/4	1.2345
22	RESIDUAL	0.5678	1/4	0.5678
23	RESIDUAL	1.2345	1/4	1.2345
24	RESIDUAL	0.5678	1/4	0.5678
25	RESIDUAL	1.2345	1/4	1.2345
26	RESIDUAL	0.5678	1/4	0.5678
27	RESIDUAL	1.2345	1/4	1.2345
28	RESIDUAL	0.5678	1/4	0.5678
29	RESIDUAL	1.2345	1/4	1.2345
30	RESIDUAL	0.5678	1/4	0.5678

NO.	DESCRIPTION	ACRES
1	RESIDUAL	1.2345
2	RESIDUAL	0.5678
3	RESIDUAL	1.2345
4	RESIDUAL	0.5678
5	RESIDUAL	1.2345
6	RESIDUAL	0.5678
7	RESIDUAL	1.2345
8	RESIDUAL	0.5678
9	RESIDUAL	1.2345
10	RESIDUAL	0.5678
11	RESIDUAL	1.2345
12	RESIDUAL	0.5678
13	RESIDUAL	1.2345
14	RESIDUAL	0.5678
15	RESIDUAL	1.2345
16	RESIDUAL	0.5678
17	RESIDUAL	1.2345
18	RESIDUAL	0.5678
19	RESIDUAL	1.2345
20	RESIDUAL	0.5678
21	RESIDUAL	1.2345
22	RESIDUAL	0.5678
23	RESIDUAL	1.2345
24	RESIDUAL	0.5678
25	RESIDUAL	1.2345
26	RESIDUAL	0.5678
27	RESIDUAL	1.2345
28	RESIDUAL	0.5678
29	RESIDUAL	1.2345
30	RESIDUAL	0.5678

AS SHOWN BY MAP THENCE BY MAP THENCE ON FILE IN BOOK 44, PAGE 86 OF PLATS, AND LOT 1 AS SHOWN BY MAP THENCE ON FILE IN BOOK 44, PAGE 86 OF PLATS, LYING IN THE NORTHEAST QUARTER ONE 1/4 OF SECTION 24, TOWNSHIP 20 SOUTH, RANGE 88 EAST, THE NORTHWEST QUARTER ONE 1/4 OF SECTION 18 AND THE SOUTHWEST QUARTER ONE 1/4 OF SECTION 18, TOWNSHIP 20 SOUTH, RANGE 80 EAST, N.D.M., CITY OF LAS VEGAS, CLARK COUNTY, NEVADA.

NO. 2000
AREA 1.2345 ACRES
DATE 10/17/92

SHEET 2 OF 2

BOOK 111, PAGE 11

REVISION 10/17/92

11/1 (see also 11/1)