

040908

00814 16-17-11

SUMMERLIN VILLAGE 7 - THE TRAILS - UNIT NO. 3

A SUBDIVISION OF A PORTION OF PARCEL 1 AS SHOWN BY MAP THEREOF ON FILE IN FILE 74, PAGE 14 OF PARCEL MAPS, IN THE CLARK COUNTY RECORDER'S OFFICE, CLARK COUNTY, NEVADA, LYING WITHIN SECTIONS 13 AND 24 OF TOWNSHIP 20 SOUTH, RANGE 59 EAST AND SECTIONS 18 AND 19 OF TOWNSHIP 20 SOUTH, RANGE 60 EAST, M.D.M., CITY OF LAS VEGAS, CLARK COUNTY, NEVADA.

LINE	BEARING	DISTANCE
L1	S 54°49'45" E	174.09'
L2	S 54°49'45" E	181.43'
L3	S 54°49'45" E	186.43'
L4	N 54°49'45" W	215.38'
L5	S 54°49'45" E	179.26'
L6	N 54°49'45" W	235.22'
L7	S 60°29'17" E	12.00'
L8	S 60°29'17" E	7.37'
L9	N 54°49'45" W	255.39'
L10	S 60°29'17" E (R)	19.37'

LEGEND

STREET CENTERLINE
 LOT LINES
 BOUNDARY LINE
 LINE SEGMENT NUMBER
 CURVE SEGMENT NUMBER
 LOT NUMBER
 AREA OF LOT

LOT 1
6,943 S.F.

SET MONUMENT - 5/8" REBAR AND ALUMINUM CAP STAMPED P.L.S. 8056 WITH BRASS CAP TIES IN TOP OF CURB (UNLESS OTHERWISE NOTED)

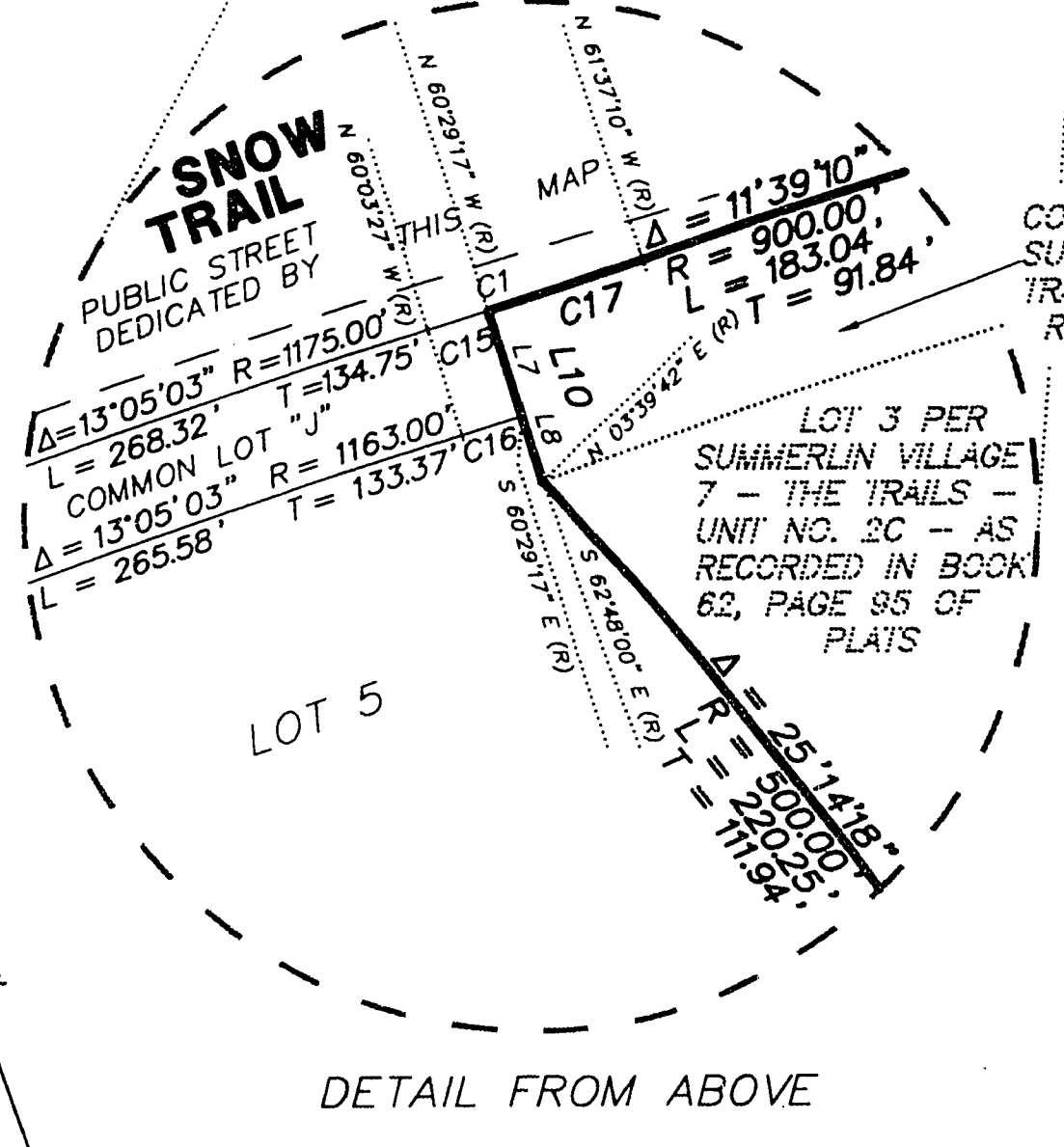
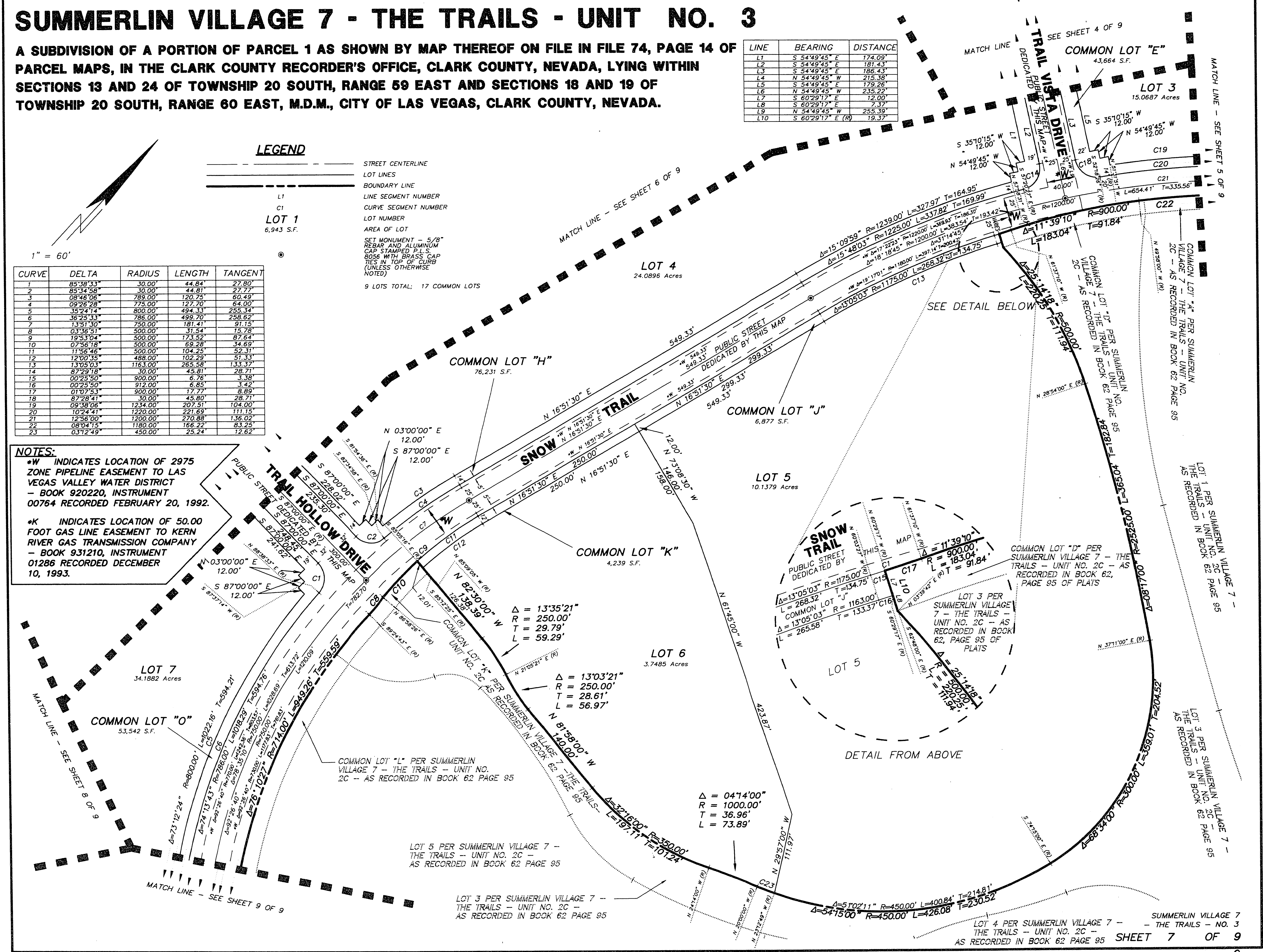
9 LOTS TOTAL; 17 COMMON LOTS

CURVE	DELTA	RADIUS	LENGTH	TANGENT
1	85°38'33"	30.00'	44.84'	27.80'
2	85°34'58"	30.00'	44.81'	27.77'
3	08°46'06"	789.00'	120.75'	60.49'
4	09°26'28"	775.00'	127.70'	64.00'
5	35°24'14"	800.00'	494.33'	255.34'
6	36°25'33"	786.00'	499.70'	258.62'
7	13°51'30"	750.00'	181.41'	91.15'
8	03°36'51"	500.00'	31.54'	15.78'
9	19°33'04"	300.00'	173.52'	87.64'
10	07°56'18"	500.00'	69.28'	34.69'
11	11°56'46"	500.00'	104.25'	52.31'
12	12°00'35"	488.00'	102.29'	51.33'
13	13°05'03"	1163.00'	265.58'	133.37'
14	87°29'18"	30.00'	45.81'	28.71'
15	00°25'50"	900.00'	6.76'	3.38'
16	00°25'50"	912.00'	6.85'	3.42'
17	01°07'53"	900.00'	17.77'	8.89'
18	87°29'41"	30.00'	45.80'	28.71'
19	09°38'06"	1234.00'	207.51'	104.00'
20	10°24'41"	1220.00'	221.69'	111.15'
21	12°56'00"	1200.00'	270.88'	136.02'
22	08°24'15"	1180.00'	166.22'	83.25'
23	03°12'49"	450.00'	25.24'	12.62'

NOTES:

*W INDICATES LOCATION OF 2975 ZONE PIPELINE EASEMENT TO LAS VEGAS VALLEY WATER DISTRICT - BOOK 920220, INSTRUMENT 00764 RECORDED FEBRUARY 20, 1992.

*K INDICATES LOCATION OF 50.00 FOOT GAS LINE EASEMENT TO KERN RIVER GAS TRANSMISSION COMPANY - BOOK 931210, INSTRUMENT 01286 RECORDED DECEMBER 10, 1993.



R: SUMA431.FK U343FM07C Mon Aug 29 09:41:08 1994 COLOR 650C 486-50V1
 HP DesignPlot 650C C:\ACAD12\DRIVER\PL21\KCN1.CFG 11:HP-GL2.ADT 4.2 Ver. 1.3 by newlett-pickard