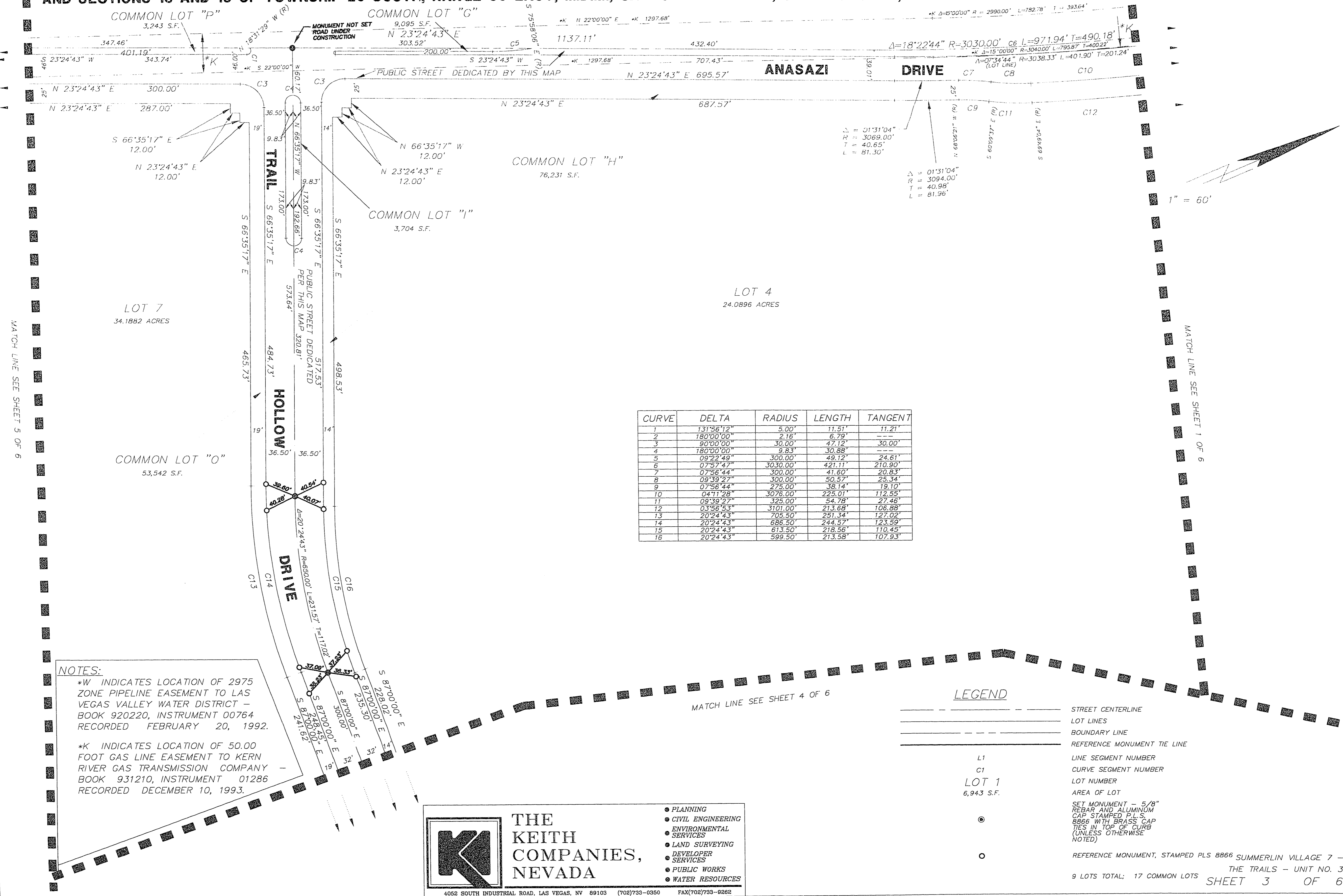


# REFERENCE MONUMENT TIE MAP FOR SUMMERLIN VILLAGE 7 - THE TRAILS - UNIT NO. 3

A SUBDIVISION OF A PORTION OF PARCEL 1 AS SHOWN BY MAP THEREOF ON FILE IN FILE 74, PAGE 14 OF PARCEL MAPS, IN THE CLARK COUNTY RECORDER'S OFFICE, CLARK COUNTY, NEVADA, LYING WITHIN SECTIONS 13 AND 24 OF TOWNSHIP 20 SOUTH, RANGE 59 EAST, AND SECTIONS 18 AND 19 OF TOWNSHIP 20 SOUTH, RANGE 60 EAST, M.D.M., CITY OF LAS VEGAS, CLARK COUNTY, NEVADA.



**NOTES:**  
 \*W INDICATES LOCATION OF 2975 ZONE PIPELINE EASEMENT TO LAS VEGAS VALLEY WATER DISTRICT - BOOK 920220, INSTRUMENT 00764 RECORDED FEBRUARY 20, 1992.  
 \*K INDICATES LOCATION OF 50.00 FOOT GAS LINE EASEMENT TO KERN RIVER GAS TRANSMISSION COMPANY - BOOK 931210, INSTRUMENT 01286 RECORDED DECEMBER 10, 1993.



**THE KEITH COMPANIES, NEVADA**

- PLANNING
- CIVIL ENGINEERING
- ENVIRONMENTAL SERVICES
- LAND SURVEYING
- DEVELOPER SERVICES
- PUBLIC WORKS
- WATER RESOURCES

4052 SOUTH INDUSTRIAL ROAD, LAS VEGAS, NV 89103 (702)733-0850 FAX(702)733-9282

**LEGEND**

- STREET CENTERLINE
- LOT LINES
- BOUNDARY LINE
- REFERENCE MONUMENT TIE LINE
- L1 LINE SEGMENT NUMBER
- C1 CURVE SEGMENT NUMBER
- LOT 1 LOT NUMBER
- 6,943 S.F. AREA OF LOT
- SET MONUMENT - 5/8" REBAR AND ALUMINUM CAP STAMPED PLS 8866 WITH BRASS CAP TIES IN TOP OF CURB (UNLESS OTHERWISE NOTED)
- REFERENCE MONUMENT, STAMPED PLS 8866 SUMMERLIN VILLAGE 7 - THE TRAILS - UNIT NO. 3

9 LOTS TOTAL: 17 COMMON LOTS  
 SHEET 3 OF 6

P:\SUMMERLIN\SUMMERLIN\74\74-101-21-07-30-40-1995 COLOR 8500 486-5042 TKCML.CFG  
 HP DESIGNER: 8500 C:\CAD\2001\DRAWING\74\74-101-21-07-30-40-1995 HP-SU/2 ADI: 4.2 VER: 1.3 BY HEWLETT-PACKARD