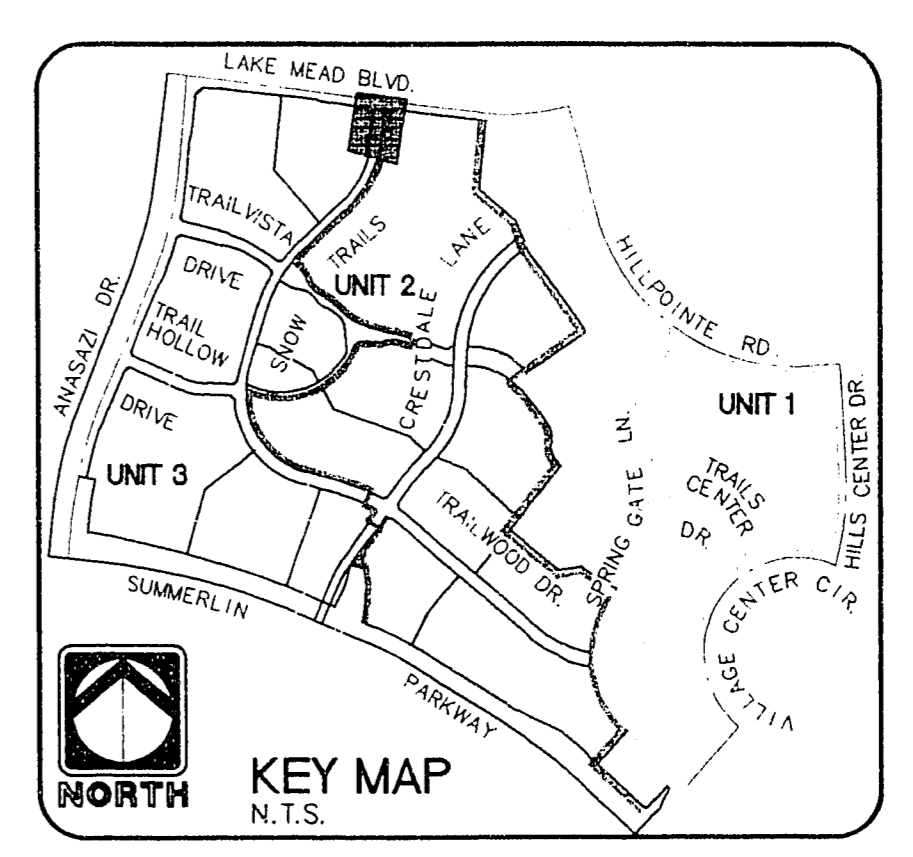
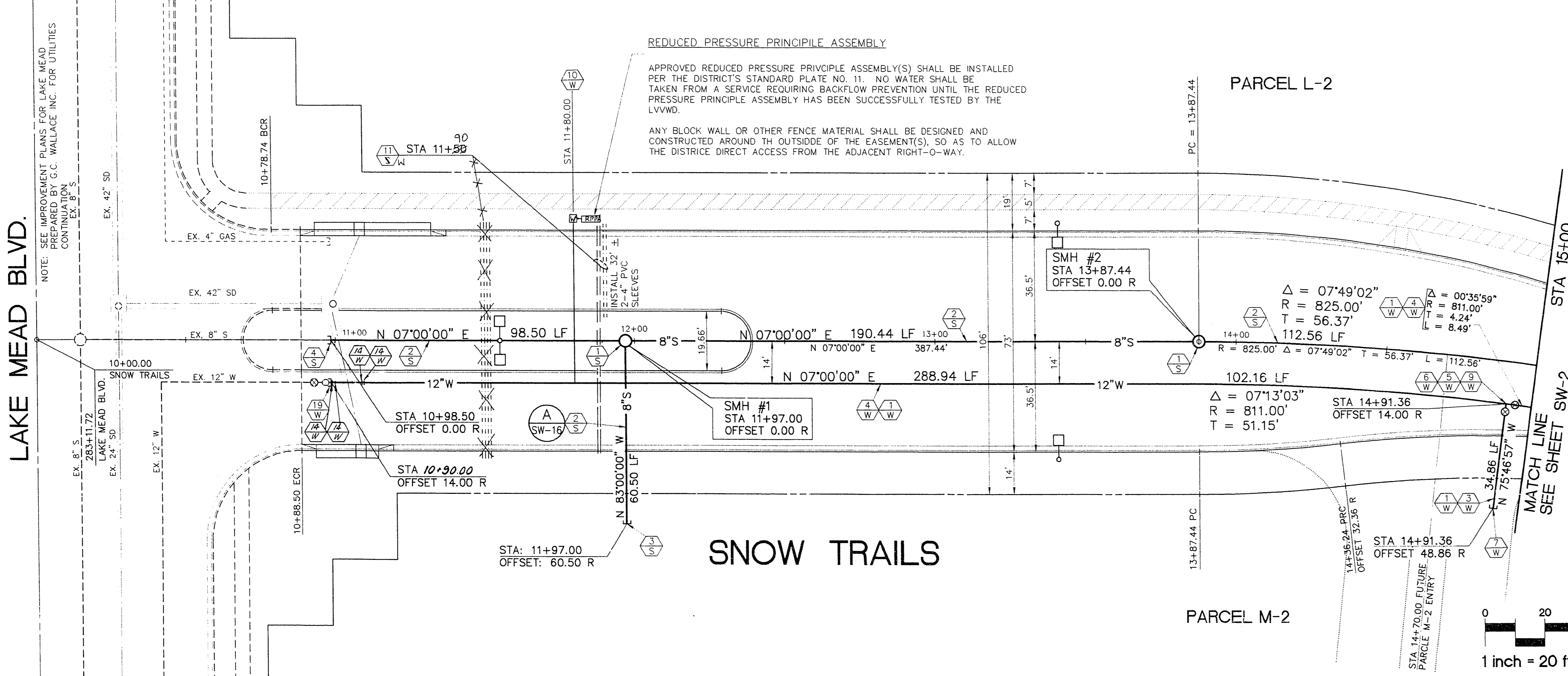


- CONSTRUCTION NOTES (SEWER)**
- 1. INSTALL 2 EA. STANDARD 4' SEWER MANHOLE PER S.I.S. D-20R CLARK COUNTY SANITATION DISTRICT STANDARD DRAWINGS.
 - 2. INSTALL 462.00 L.F. 8" PVC (SDR-35) SEWER LINE.
 - 3. INSTALL 1 EA. 8" PVC PLUG STUB-OUT PLUG AND CAP.
 - 4. REMOVE 1 EA. END CAP AND JOIN TO EXIST. 8" SEWER (VERIFY EXIST. INVERT ELEVATION).

- CONSTRUCTION NOTES (WATER)**
- 1. INSTALL ALL WATER MAINS AND APPURTENANCES PER L.V.V.W.D. STD. PLATES.
 - 2. INSTALL 34.86 L.F. 8" PVC (C-900) WATER PIPE.
 - 3. INSTALL 399.59 L.F. 12" PVC (C-900) WATER PIPE.
 - 4. INSTALL 1 EA. 8" GATE VALVE.
 - 5. INSTALL 1 EA. 12" GATE VALVE.
 - 6. INSTALL 1 EA. END CAP AND CORP STOP (LVVWD STD PLATE NO. 4).
 - 7. INSTALL 1 EA. 12" X 8" TEE AND THRUST BLOCK PER L.V.V.W.D. STD. PLATE NO. 5.
 - 8. INSTALL 1 EA. 2" METER AND SERVICE LATERAL WITH BACKFLOW PREVENTION DEVICE-PARALLEL TO CURB.
 - 9. INSTALL 1 SET 2-6" PVC AND 2-4" PVC (SDR-35) SLEEVES FOR FUTURE ELECTRICAL OR IRRIGATION PURPOSES.
 - 10. REMOVE 1 EA. END CAP AND CONNECT TO EXIST. 12" WATER PIPE.
 - 11. INSTALL 4 EA. 12" X 45" FITTING AND THRUST BLOCKS PER L.V.V.W.D.



Signature: [Handwritten Signature]
 LVVWD
 DATE: 7/11/99



RECORD DRAWING

RECORD INFORMATION PROVIDED BY FIELD CONTRACTOR

NO.	REVISION	DATE	DESCRIPTION	DATE	APPROVAL
1	AS SHOWN	7/11/99			

RECOMMENDED
 [Signature]
 R.P.E.
 DATE: 7/11/99

THE KEITH COMPANIES
 NEVADA
 4622 56th INDUSTRIAL RD. LAS VEGAS, NV 89103 (702) 732-0366

ENGINEER
HOWARD HUGHES PROPERTIES
 SUMMERLIN VILLAGE 7 - THE TRAILS - UNIT 3
SNOW TRAILS
 SEWER AND WATER
 STA 10+00 - STA 15+00

SHEET
SW-1
 SHIT 30 OF 54

10/14/99 11:40 AM 13 36 48 1994 5/4/99 10. SOLID 11 6. JP. 486-50410
 HP. CAS. 3/9/99. 600 - 46-51-2. A01. 4.2. Plotter: driver by Hewlett-Packard 1.0