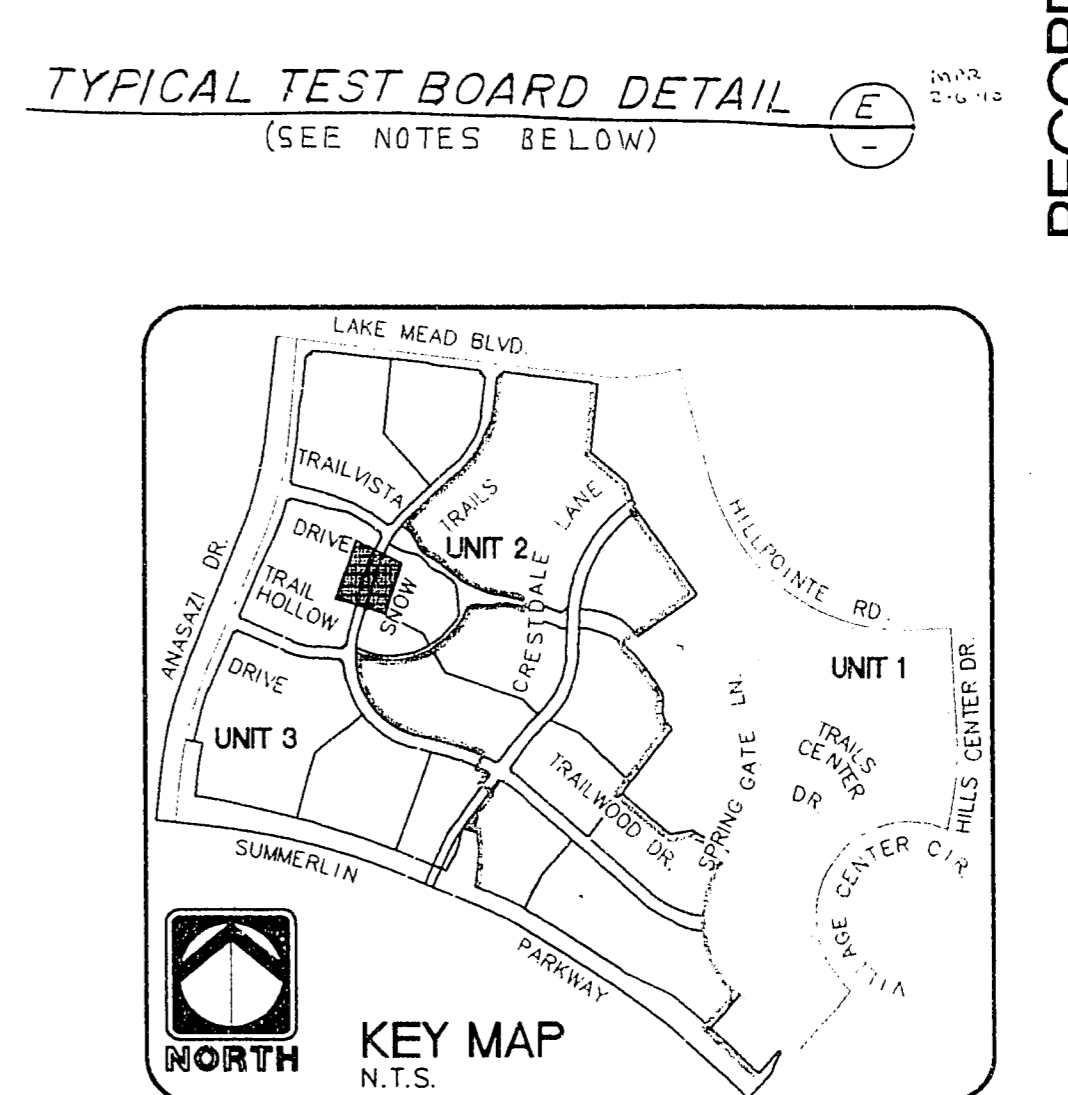
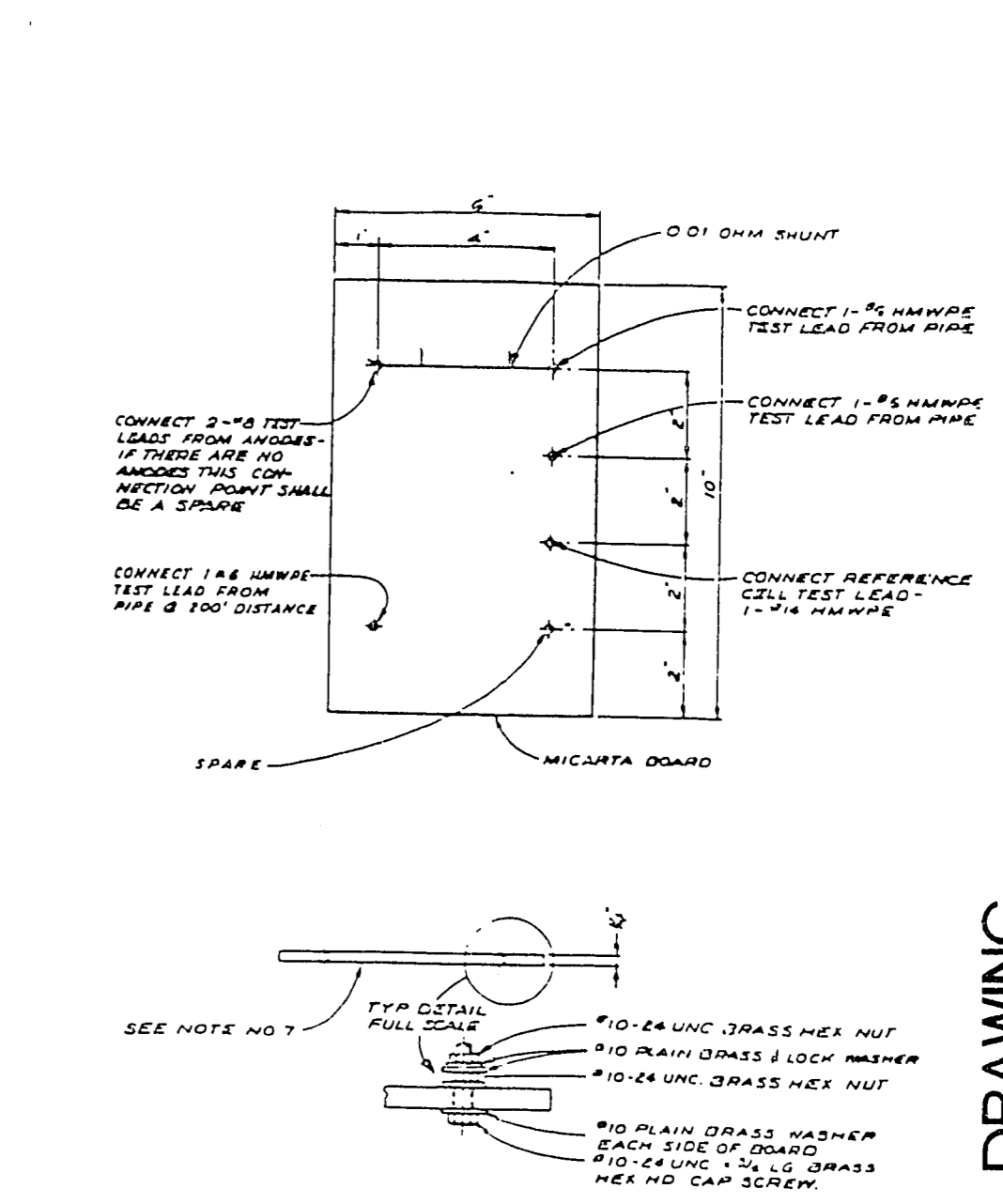


- ### CONSTRUCTION NOTES (WATER)
1. INSTALL ALL WATER MAINS AND APPURTENANCES PER L.V.V.W.D. STD. PLATES.
 2. INSTALL 151.06 L.F. 8" PVC (C-900) WATER PIPE.
 3. INSTALL 2 EA. 8" GATE VALVE.
 4. INSTALL 2 EA. END CAP AND CORP STOP (LVVWD STD. PLATE NO. 4).
 5. INSTALL 1 EA. SET 2-6" PVC AND 2-4" PVC (SDR-35) SLEEVES FOR FUTURE ELECTRICAL OR IRRIGATION PURPOSES.
 6. INSTALL 1 EA. FIRE HYDRANT INSTALLATION PER L.V.V.W.D. PLATE NO. 7.
 7. INSTALL 2 EA. 12" X 8" REDUCERS.
 8. REMOVE 2 EA. END CAP AND CONNECT TO EXIST. 12" WATER PIPE.
 9. ADJUST 2 EA. EXISTING VALVE COVER TO GRADE.
 10. RELOCATE 1 EA. EXISTING TEST STATION (SEE DETAIL HEREON).
 11. INSTALL 1 EA. 8" TEE AND THRUST BLOCK PER L.V.V.W.D. PLATE NO. 5.



- ### TEST BOARD NOTES
1. Expose the test stations and label all leads according to the enclosed drawing.
 2. The leads that are connected to the pipe require #6 copper wire with a HERPE jacket such as Raychem Permacord.
 3. The lead that is connected to the reference cell requires #14 copper wire with a HERPE jacket such as Raychem Permacord.
 4. Connect the two wires to be spliced with a copper butt connection using the proper crimping tool.
 5. Make each splice using a Scotchcast resin splicing kit, Durco-cast universal splice kit or a Raychem amode splice encapsulation kit, similar to the ones used by the phone company to splice their cables.
 6. Reconnect the test board to proper leads and place the test box at the new site.

12/2/94 DATE

0 20 40 80

1 inch = 20 ft.

NORTH

Call before you Dig
1-800-227-2800

REV.	DATE	DESCRIPTION	DATE	APPROVAL
1	7/19/94			
2				
3				
4				
5				
6				
7				
8				
9				
10				

RECOMMENDED

RECORD DRAWING

RECORD INFORMATION PROVIDED BY FIELD CONTRACTOR

PLANNING
ENGINEERING
SURVEYING
LAND SURVEYING
MANAGEMENT

10584 R.P.E. DATE 7/19/94

GARY D. DAVIS

RECOMMENDED

HOWARD HUGHES PROPERTIES

SNOW TRAILS SEWER AND WATER

UNIT 3

STA 30+00 - STA 35+00

SHEET SW-5

SHT 34 OF 54

307Y-4271-3