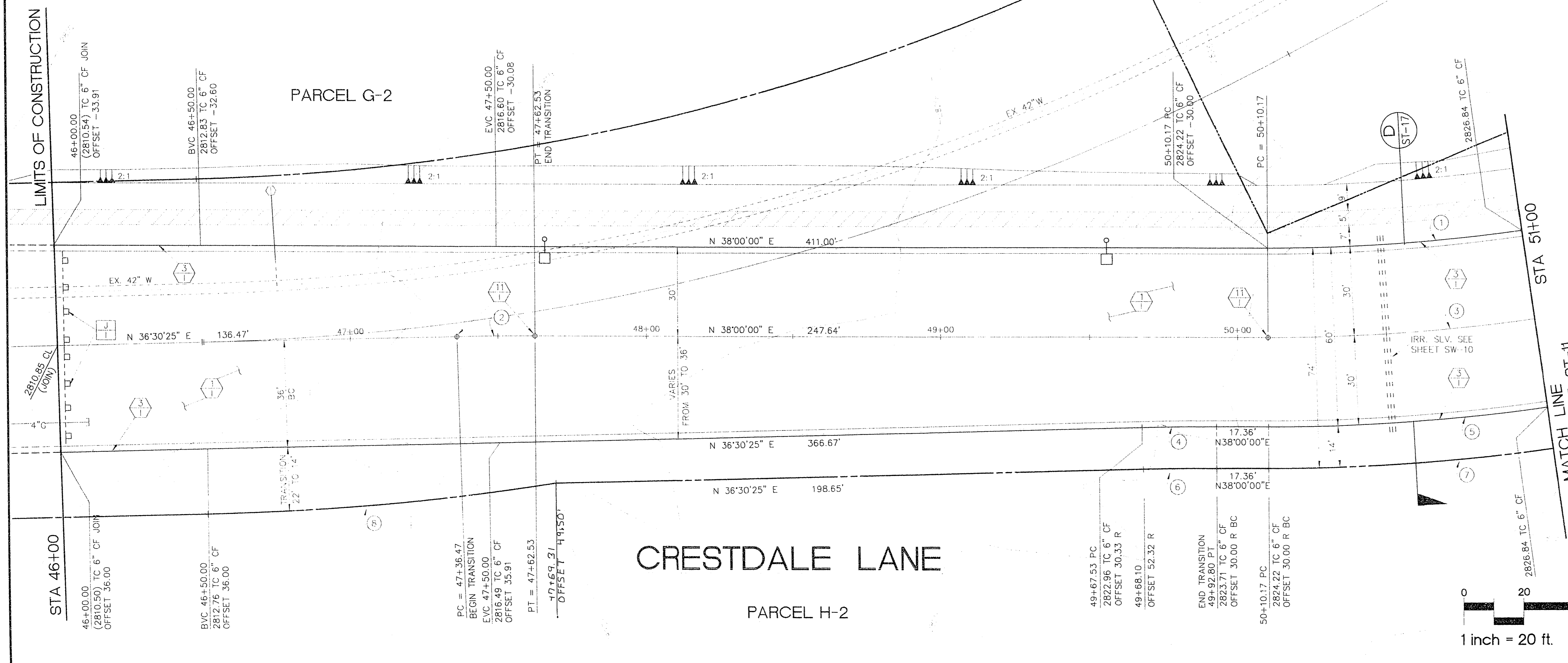
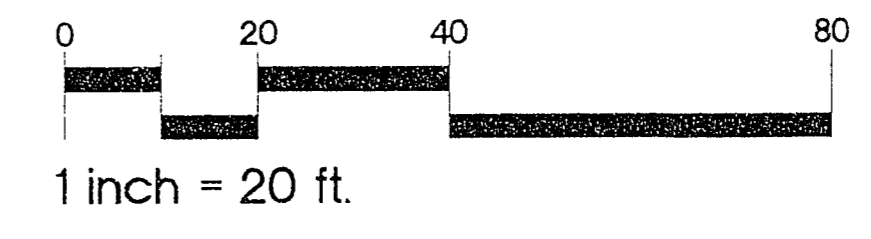
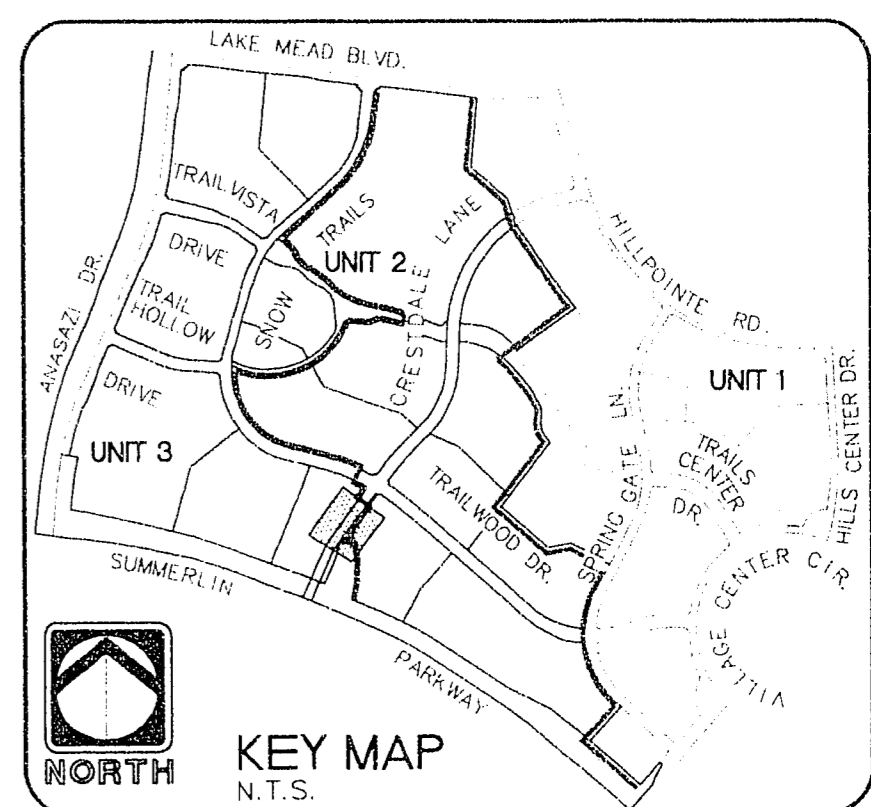


- IMPROVEMENTS**
- CONSTRUCT 3.519,87' WY. OF 3" ASPHALT PAVEMENT WITH A 1" OVERLAY OVER 4" TYPE B AGGREGATE BASE.
 - INSTALL 999.98' L.I. OF 6" 1.7" INP. CURB AND GUTTER.
 - INSTALL 3 E.A. 14" P. 3 MONUMENTS.
 - REMOVE 72' L.I. EXISTING BARRICADE.
- STREET LIGHTING AND ELECTRICAL**
- SHOW FOR REFERENCE ONLY. SEE SHEETS SW-1 & SW-2 FOR STREET LIGHTING INSTALLATION.
- (SEE NEVADA POWER CO. DWGS. FOR ELECTRICAL DISTRIBUTION).
- BENCHMARK**
- RIVET AND PLATE IN TOP OF CURB NW SIDE OF TOWN CENTER DRIVE AND SOUTH ROUNDABOUT ISLAND.
 ELEVATION = 2725.923
 PER CITY OF LAS VEGAS DATUM SEASON: 01/00/00
 1984
 SEE SHEET CC-3 FOR LOCATION.



CURVE NUMBERS ARE SHOWN (D) ON PLANS

CURVE DATA				
CURVE	RADIUS	LENGTH	TANGENT	DELTA
1	620.00'	85.69'	42.91'	07°55'07"
2	1000.00'	26.06'	13.03'	01°29'35"
3	650.00'	89.83'	44.99'	07°55'07"
4	970.00'	25.28'	12.64'	01°29'35"
5	680.00'	93.98'	47.06'	07°55'07"
6	956.00'	24.91'	12.46'	01°29'35"
7	694.00'	164.48'	82.62'	13°54'44"
8	883.00'	118.95'	59.57'	07°43'06"



Call before you Dig.
 1-800-227-2600

RECORD DRAWING

RECORD INFORMATION PROVIDED BY FIELD CONTRACTOR

RECOMMENDED

PLANNING: []
 DESIGN: []
 SURVEYING: []
 ARCHITECTURE: []
 ELECTRICAL: []
 MECHANICAL: []
 MANAGEMENT: []

10584 R.P.E. DATE 11/19/14

6/10/14

REV. DATE DESCRIPTION

ENGINEER: THE KEITH COMPANIES NEVADA

HOWARD HUGHES PROPERTIES
 SUMMERLIN VILLAGE 7 - THE TRAILS - UNIT 3
 CRESTDALE LANE
 PLAN AND PROFILE
 STA 46+00 - STA 51+00

SHEET ST-10

SHT 19 OF 54

11-2-15

107Y-4271-3