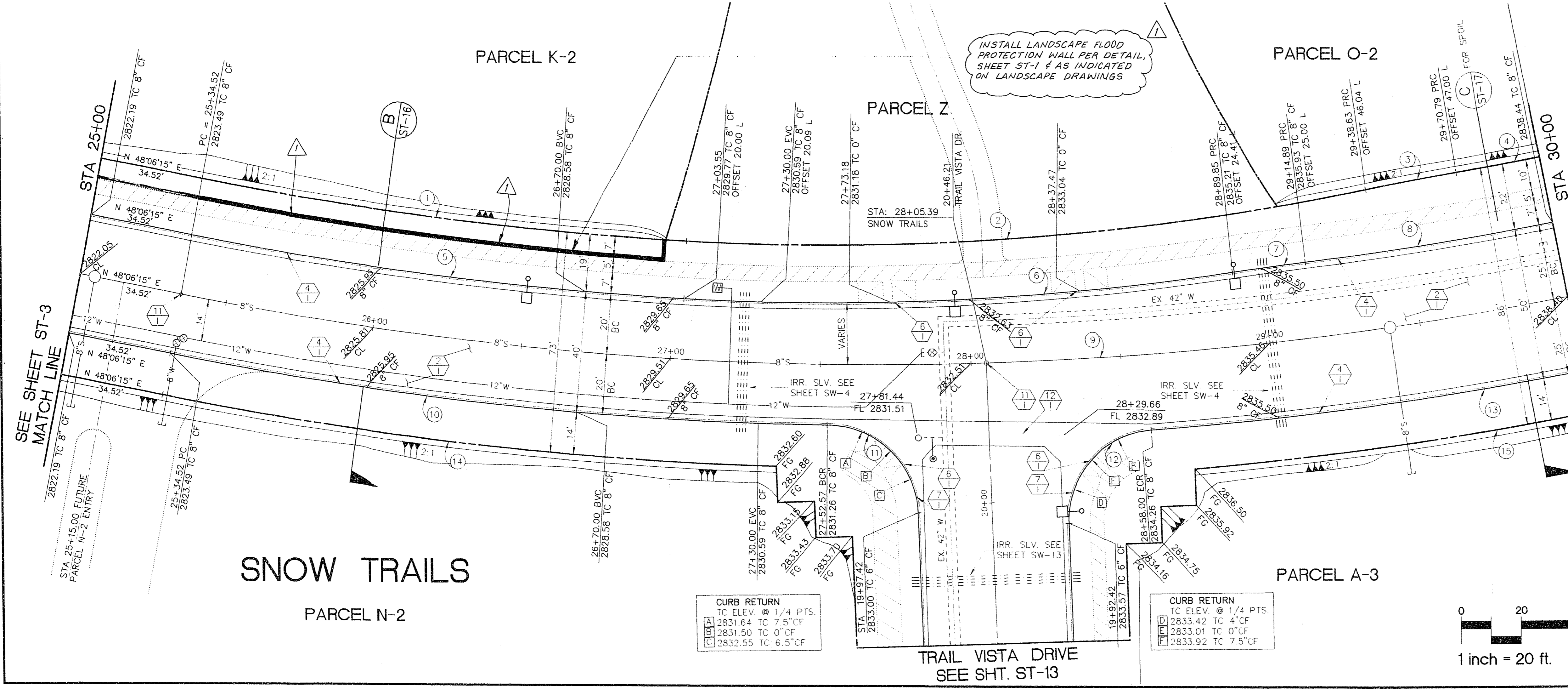
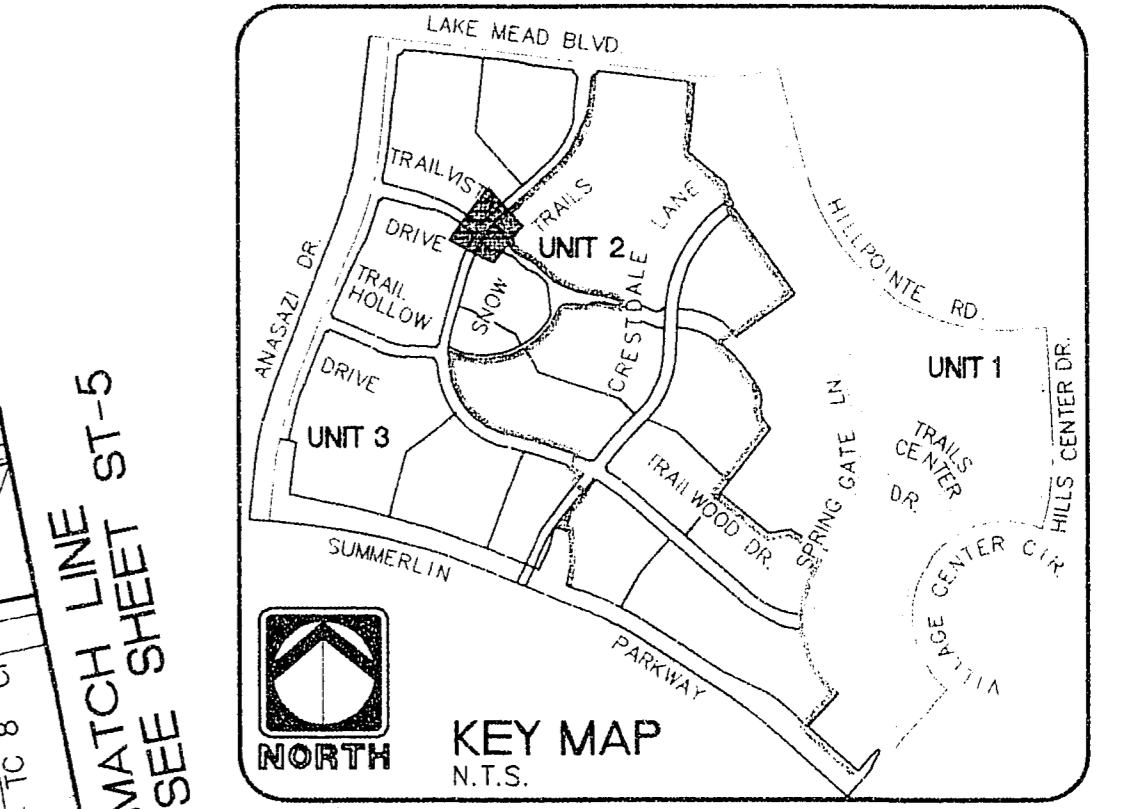


- IMPROVEMENTS**
- 1. CONSTRUCT 2,190.18 S.F. OF 2" ASPHALT PAVEMENT WITH A 1" OVERLAY OVER 4" TYPE II AGGREGATE BASE
 - 2. INSTALL 984.42 L.F. OF 8" T.I. TYPE CURB AND GUTTER
 - 3. CONSTRUCT DEPRESSED CURB FOR FUTURE SIDEWALK RAMP. QUANTITIES INCLUDED IN (4)
 - 4. CONSTRUCT (QUANTITIES INCLUDED IN (4)) 8" TO 6" CURB FACE TRANSITION THROUGH CURB RETURN. INSTALL 2 EA. TYPE 3 MONUMENTS.
 - 5. CONSTRUCT 831.02 SF CROSS GUTTER.
- STREET LIGHTING AND ELECTRICAL**
- (SHOW FOR REFERENCE ONLY, SEE SHEETS SL-1 & SL-2 FOR STREET LIGHTING INSTALLATION)
 (SEE NEVADA POWER CO. DWGS. FOR ELECTRICAL DISTRIBUTION)
- BENCHMARK**
- RIVET AND PLATE IN TOP OF CURB NW SIDE OF TOWN CENTER DRIVE AND SOUTH ROUNDABOUT ISLAND.
 ELEVATION = 3725.923
 PER CITY OF LAS VEGAS DATUM STATION: OLVOO 1954
 SEE SHEET CG-3 FOR LOCATION



CURVE NUMBERS ARE SHOWN (U) ON PLANS

CURVE	RADIUS	LENGTH	TANGENT	DELTA
1	1161.00'	163.54'	81.91'	08°04'15"
2	881.00'	227.13'	114.19'	14°46'15"
3	881.00'	30.93'	15.46'	02°00'41"
4	1153.00'	28.07'	14.04'	01°23'41"
5	1180.00'	166.22'	83.25'	08°04'15"
6	900.00'	183.04'	91.84'	11°39'10"
7	900.00'	24.53'	12.27'	01°33'42"
8	1175.00'	83.33'	41.68'	04°03'49"
9	1200.00'	465.48'	235.71'	22°13'31"
10	1220.00'	221.69'	111.15'	10°24'41"
11	30.00'	45.80'	28.71'	87°28'41"
12	30.00'	45.81'	28.71'	87°29'18"
13	1225.00'	144.95'	72.57'	06°46'48"
14	1234.00'	207.51'	104.00'	09°38'06"
15	1239.00'	132.90'	66.51'	06°08'45"



0 20 40 80
1 inch = 20 ft.

Call before you Dig.
1-800-227-2600
LANDSCAPE SERVICE (LSA)

RECORD DRAWING
RECORD INFORMATION PROVIDED BY FIELD CONTRACTOR

RECOMMENDED
 CIVIL ENGINEERING AND SURVEYING MANAGEMENT
GARY S. GIBBY
 10/19/94 DATE
 10684 R.P.E.
 10/13/95 DATE
 ADD LANDSCAPE FLOOD WALL 10/13/95 DATE
 APPROVAL

ENGINEER: **THE KEITH COMPANIES NEVADA**
 4052 SO INDUSTRIAL RD LAS VEGAS, NV 89103 (702) 731-0350

HOWARD HUGHES PROPERTIES
 SUMMERLIN VILLAGE 7 - THE TRAILS - UNIT 3
SNOW TRAILS
 PLAN AND PROFILE
 STA 25+00 - STA 30+00

SHEET
ST-4
 SHEET 13 OF 54

3. SUMMERLIN VILLAGE 7 - THE TRAILS - UNIT 3 - SNOW TRAILS AND TRAIL VISTA DRIVE. PROJECT NO. 10110.11.5.0.P. - 10/19/94. DATE: 10/19/94. DRAWN BY: GIBBY. CHECKED BY: GIBBY. APPROVED BY: GIBBY.

11-2-12

107Y-4271-3