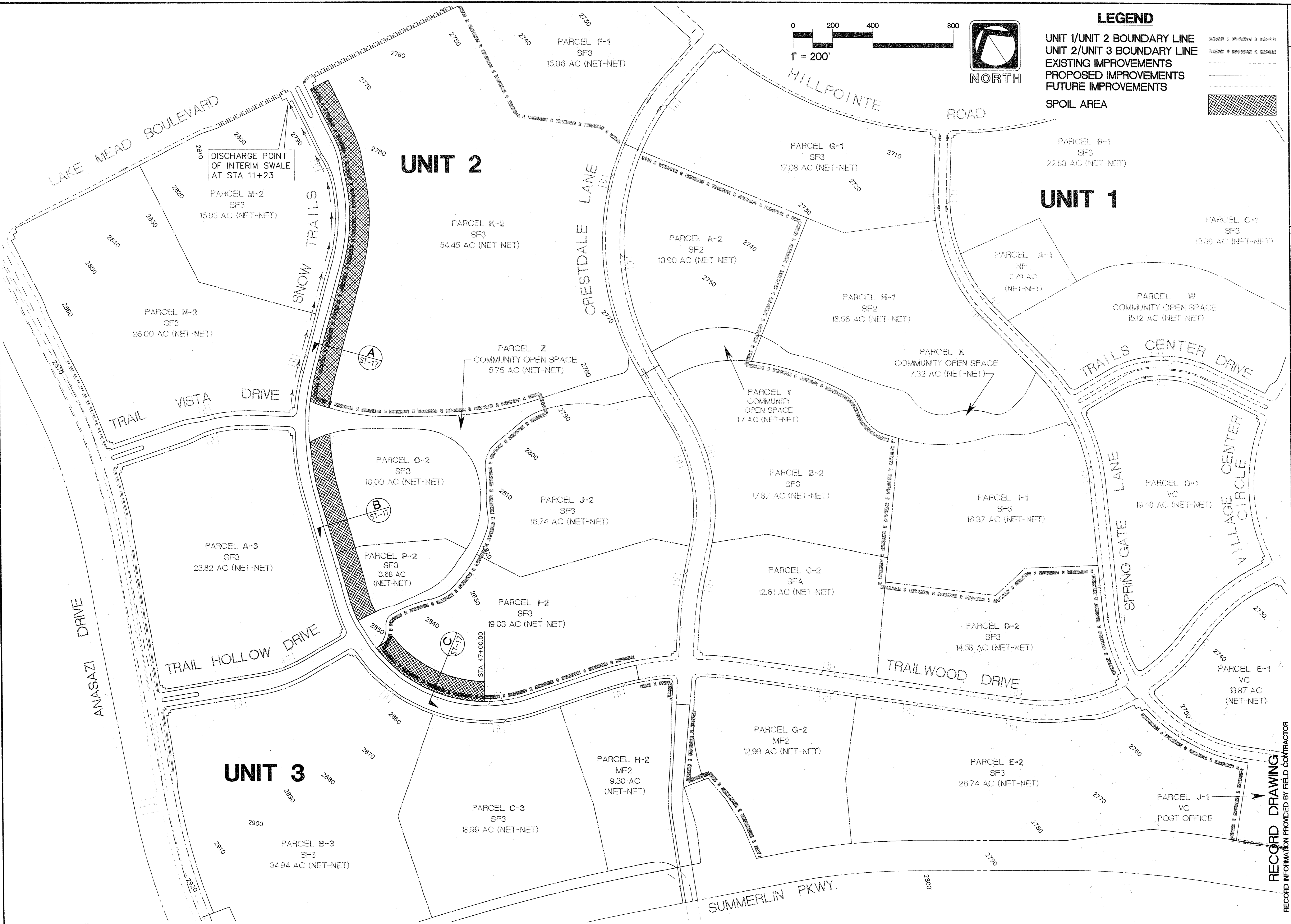


5. 5240 10-20-2002 10:19:14 16 48 1984 SHARED 1-B ANTIDUT 10. SOLID 1:1 9 JP- 486-5047
 10 2003/04/02 10:19:14 16 48 1984 SHARED 1-B ANTIDUT 10. SOLID 1:1 9 JP- 486-5047
 10 2003/04/02 10:19:14 16 48 1984 SHARED 1-B ANTIDUT 10. SOLID 1:1 9 JP- 486-5047



LEGEND

UNIT 1/UNIT 2 BOUNDARY LINE
 UNIT 2/UNIT 3 BOUNDARY LINE
 EXISTING IMPROVEMENTS
 PROPOSED IMPROVEMENTS
 FUTURE IMPROVEMENTS
 SPOIL AREA

REV.	DATE	DESCRIPTION	APPROVAL
1	7/19/94	DATE	
2	10/26/94	R.P.E.	
RECOMMENDED			
ENGINEER THE KEITH COMPANIES NEVADA 4062 SO. INDUSTRIAL RD. LAS VEGAS, NV 89103 (702) 733-0850			
RECORD DRAWING RECORD INFORMATION PROVIDED BY FIELD CONTRACTOR HOWARD HUGHES PROPERTIES SUMMERLIN VILLAGE 7 - THE TRAILS - UNIT 3 SPOIL PLAN			
SHEET			
GP-3			
SHT 29 OF 54			