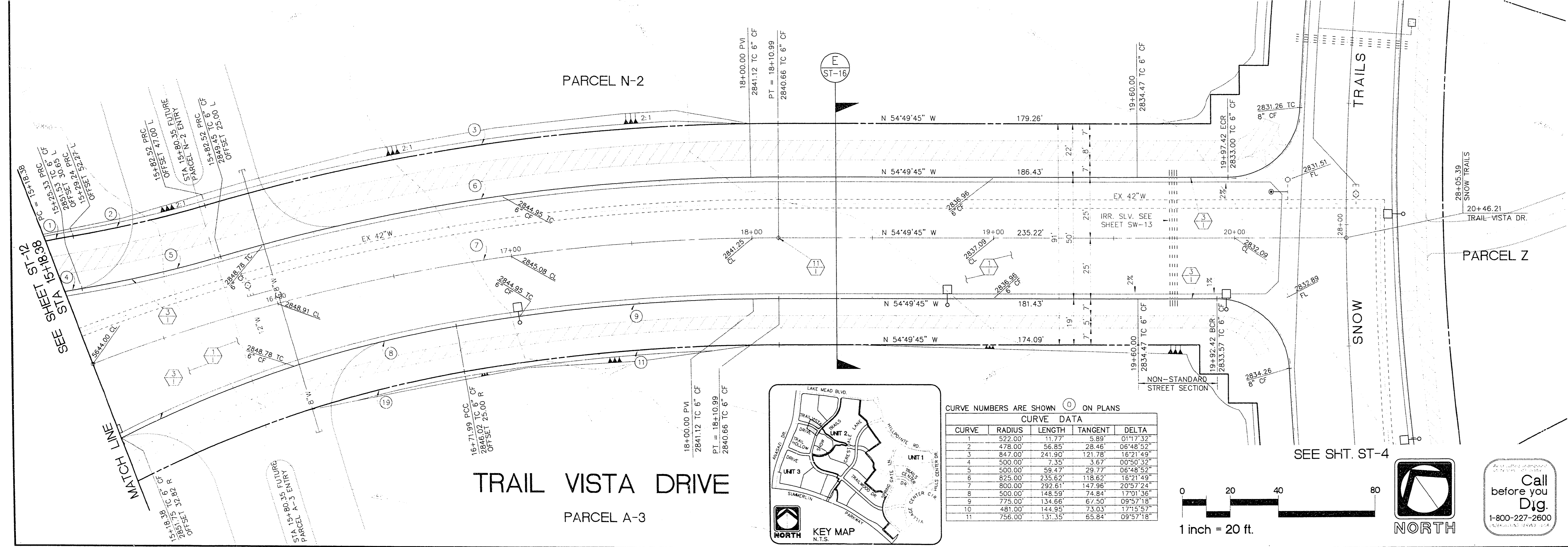


- IMPROVEMENTS**
- 2860 CONSTRUCT 2615.66 S.Y. OF 3" ASPHALT PAVEMENT WITH A 1" OVERLAY OVER 4" TYPE II AGGREGATE BASE.
  - 2856 INSTALL 804.96 L.F. OF 6" "L" TYPE CURB AND GUTTER.
  - 2856 INSTALL 1 E.A. TYPE 3 MONUMENTS.
- STREET LIGHTING AND ELECTRICAL**
- 2852 (SHOW FOR REFERENCE ONLY; SEE SHEETS SL-1 & SL-2 FOR SHEET LIGHTING INSTALLATION).  
(SEE NEVADA POWER CO. DWGS. FOR ELECTRICAL DISTRIBUTION).
- BENCHMARK**
- RIVET AND PLATE IN TOP OF CURB NW SIDE OF TOWN CENTER DRIVE AND SOUTH ROUNDABOUT ISLAND. ELEVATION = 2725.923 PER CITY OF LAS VEGAS DATUM STATION: OLVOO 1954 SEE SHEET CG-3 FOR LOCATION.



CURVE NUMBERS ARE SHOWN ON PLANS

CURVE	RADIUS	LENGTH	TANGENT	DELTA
1	522.00'	11.77'	5.89'	01°17'32"
2	478.00'	58.85'	28.46'	06°48'52"
3	847.00'	241.90'	121.78'	16°21'49"
4	500.00'	7.35'	3.67'	00°50'32"
5	500.00'	59.47'	29.77'	06°48'52"
6	825.00'	235.62'	118.62'	16°21'49"
7	800.00'	292.61'	147.96'	20°57'24"
8	800.00'	148.59'	74.84'	17°01'36"
9	775.00'	134.68'	67.50'	09°57'18"
10	481.00'	144.95'	73.03'	17°15'57"
11	756.00'	131.35'	65.84'	09°57'18"

**RECORD DRAWING**

RECORD INFORMATION PROVIDED BY FIELD CONTRACTOR

RECOMMENDED: THE KEITH COMPANIES NEVADA

ENGINEER: HOWARD HUGHES PROPERTIES  
SUMMERLIN VILLAGE 7 - THE TRAILS - UNIT 3  
TRAIL VISTA DRIVE  
PLAN AND PROFILE  
STA 15+18.38 - STA 20+46.21

RECOMMENDED: THE KEITH COMPANIES NEVADA

ENGINEER: THE KEITH COMPANIES NEVADA  
10584 R.P.E. DATE 7/19/94

PLANNING: \_\_\_\_\_ DATE \_\_\_\_\_  
ENGINEERING: \_\_\_\_\_ DATE \_\_\_\_\_  
ARCHITECTURE: \_\_\_\_\_ DATE \_\_\_\_\_  
LAND SURVEYING: \_\_\_\_\_ DATE \_\_\_\_\_  
MANAGEMENT: \_\_\_\_\_ DATE \_\_\_\_\_

00003 (7/24) 744-0950

4082 50 INDUSTRIAL RD LAS VEGAS NV

11-2-21

107Y-4271-3

SHEET ST-13

SHT 22 OF 54