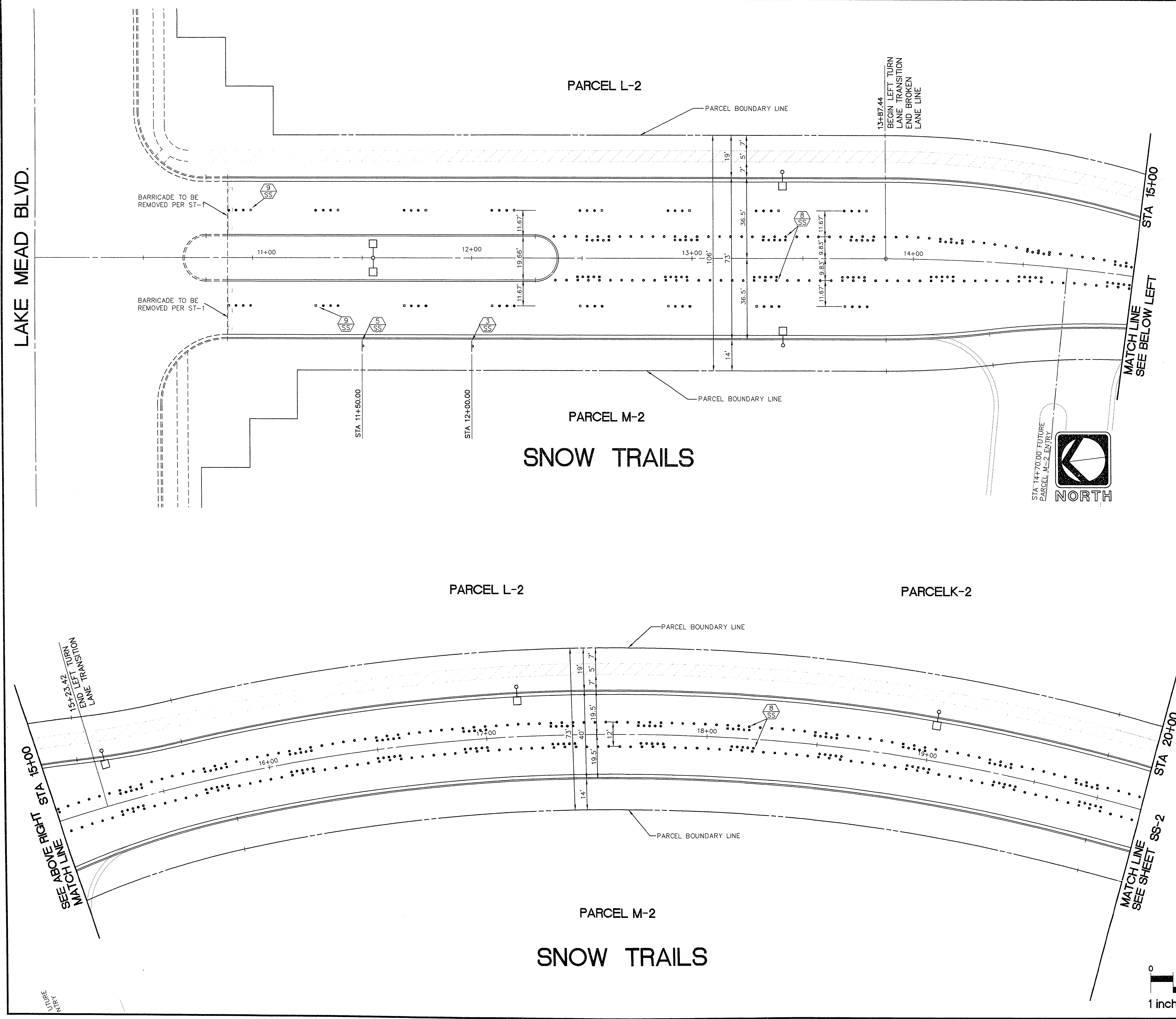


0_S:\M407\407SS01_Tue Jul 19 15:54:45 1984_SHADED 1-9_WHITEOUT 10_SOLID 11 & LP- 485-50#1
 HP DesignJet 800: hp-50/2 401.4.2 plotter driver by Hewlett-Packard 1.0



- STREET STRIPING AND SIGNAGE NOTES**
- 1 SS ALL STREET SIGNS SHALL BE IN CONFORMANCE WITH THE MANUAL OF UNIFORM TRAFFIC CONTROL DEVICES (MUTCD) LATEST EDITION.
 - 3 SS INSTALL 1 EA. R2-1 (24" X 30") 25 M.P.H. SPEED LIMIT SIGN.
 - 5 SS INSTALL 1 EA. W42 (36" X 36") LANE REDUCTION TRANSITION SIGN.
 - 8 SS INSTALL CONTINUOUS 1520 LF LEFT TURN LANE LINE.
 - 9 SS INSTALL 610 LF BROKEN LANE LINE.

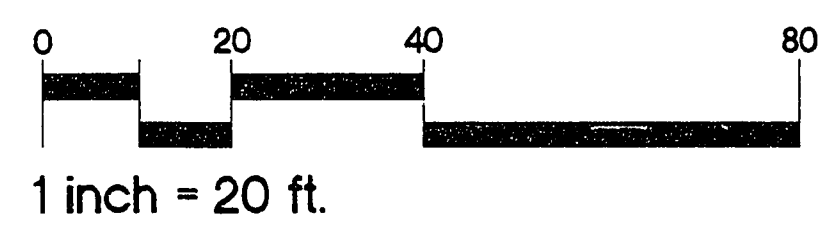
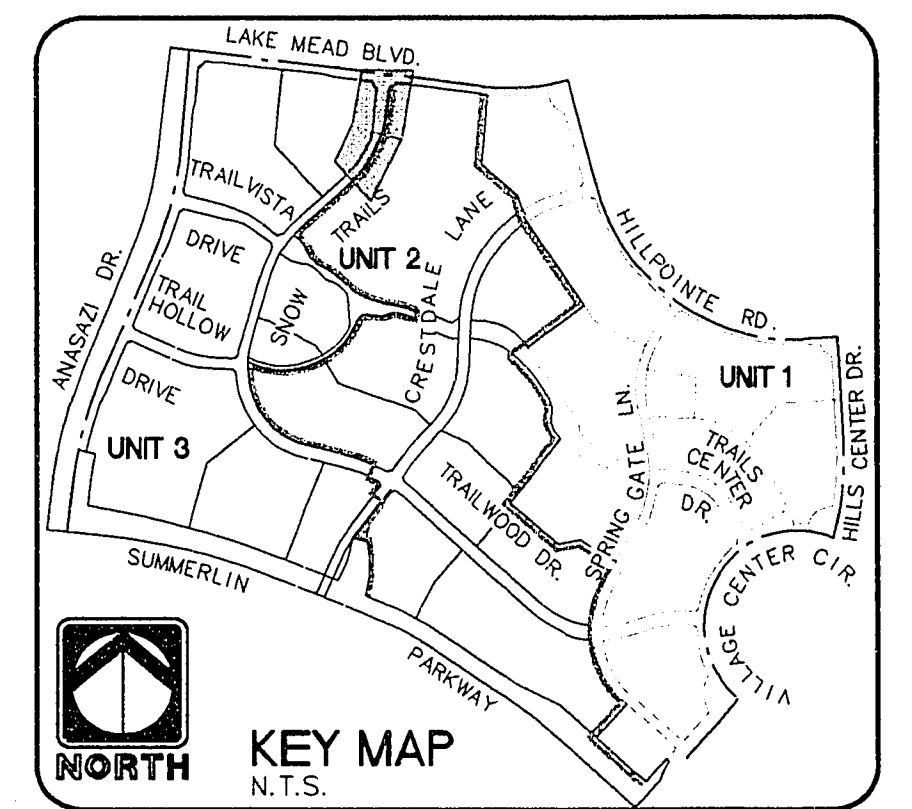
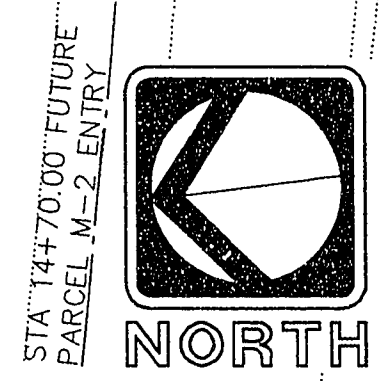
NOTE:
 ALL STRIPING SHOWN IS FUTURE AND NOT IN THIS CONTRACT. STRIPING TO BE INSTALLED AFTER FINAL 1" OVERLAY.

LAKE MEAD BLVD.

STA 15+00
 MATCH LINE
 SEE BELOW LEFT

SEE ABOVE RIGHT
 STA 15+00
 MATCH LINE

STA 20+00
 MATCH LINE
 SEE SHEET SS-2



RECORD DRAWING	
RECOMMENDED	RECORD INFORMATION PROVIDED BY FIELD CONTRACTOR
<ul style="list-style-type: none"> • PLANNING • ENGINEERING • LANDSCAPE ARCHITECTURE • LAND SURVEYING • CONSTRUCTION 	10584 R.P.E. DATE 7/19/84
THE KEITH COMPANIES NEVADA 4042 SO. INDUSTRIAL RD., LAS VEGAS, NV. 89103 (702) 739-0350	R. BUSBY DATE 7/19/84
HOWARD HUGHES PROPERTIES SUMMERLIN VILLAGE 7 - THE TRAILS - UNIT 3 SNOW TRAILS SIGNING AND STRIPING STA 10+00 - STA 20+00	SHEET SS-1 SHT 47 OF 54
1 inch = 20 ft.	107Y-4271-3