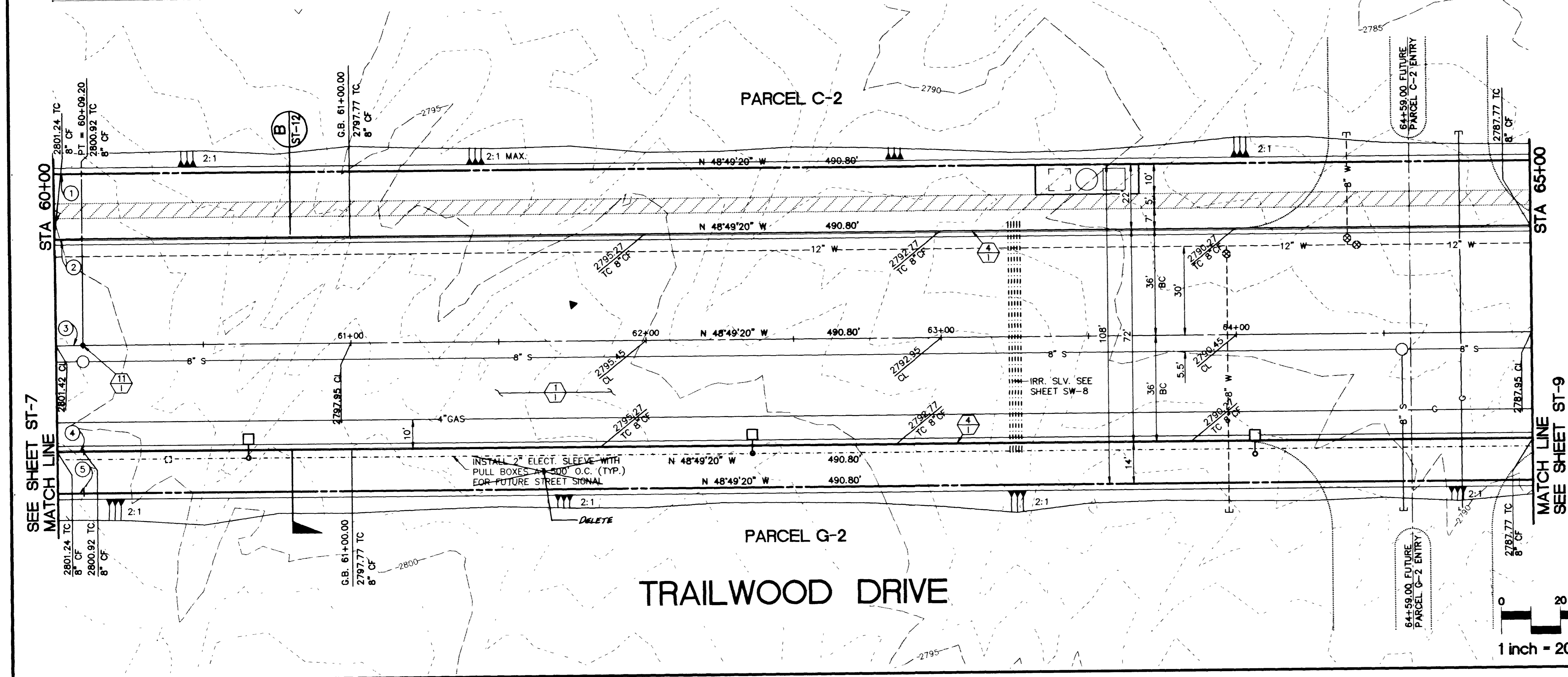
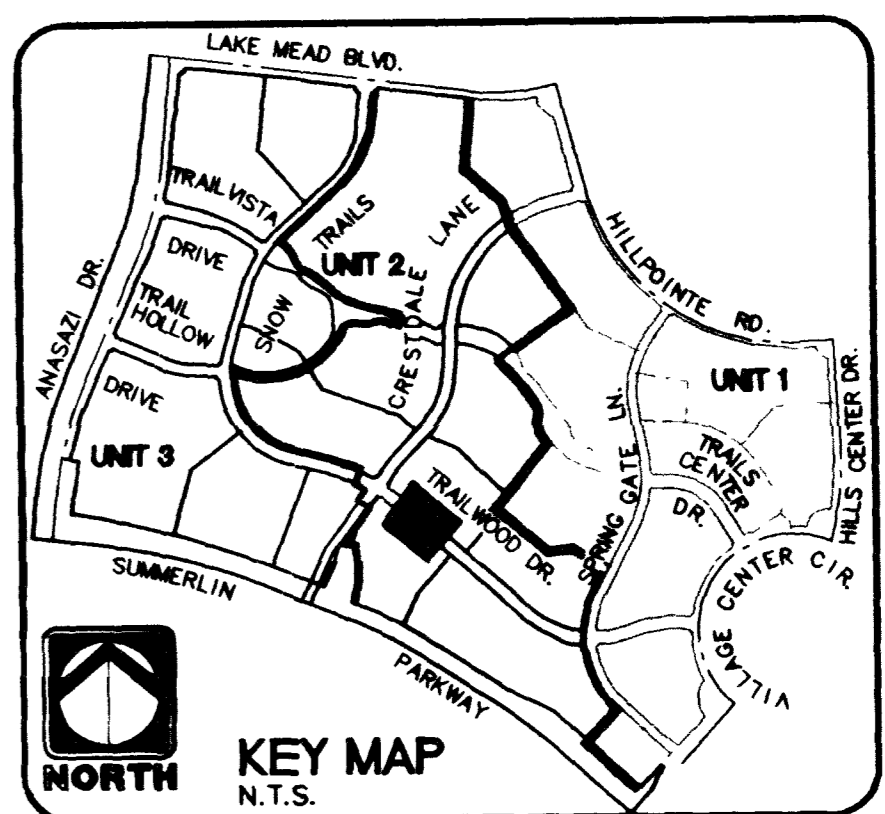


- IMPROVEMENTS**
- CONSTRUCT 3777.78 S.Y. OF 3" ASPHALT PAVEMENT OVER 4" TYPE II AGGREGATE BASE. A 1" OVERLAY IS REQUIRED UNDER SEPARATE CONTRACT.
  - INSTALL 1,000.00 L.F. OF 8" "L" TYPE CURB AND GUTTER
  - INSTALL 1 EA. TYPE 3 MONUMENTS.
- STREET LIGHTING AND ELECTRICAL**
- (SHOW FOR REFERENCE ONLY; SEE SHEETS SL-1 & SL-2 FOR STREET LIGHTING INSTALLATION).
- (SEE NEVADA POWER CO. DWGS. FOR ELECTRICAL DISTRIBUTION).
- BENCHMARK**
- RIVET AND PLATE IN TOP OF CURB NW SIDE OF TOWN CENTER DRIVE AND SOUTH ROUNDABOUT ISLAND.  
ELEVATION = 2725.925  
PER CITY OF LAS VEGAS DATUM STATION: OLVOO 1954  
SEE SHEET CG-3 FOR LOCATION.



CURVE NUMBERS ARE SHOWN (D) ON PLANS

CURVE DATA				
CURVE	RADIUS	LENGTH	TANGENT	DELTA
1	1558.00'	9.55'	4.78'	00°21'05"
2	1536.00'	9.42'	4.71'	00°21'05"
3	1500.00'	9.20'	4.60'	00°21'05"
4	1464.00'	8.98'	4.49'	00°21'05"
5	1450.00'	8.89'	4.45'	00°21'05"



1 inch = 20 ft

NORTH

Call before you Dig.  
1-800-227-2800  
UNDERGROUND SERVICE (USA)

**RECORD DRAWING**  
RECORD INFORMATION REQUIRED BY FIELD CONTRACTOR

RECOMMENDED

PLANNING  
ENGINEERING  
LANDSCAPE ARCHITECTURE  
LAND SURVEYING  
CONSTRUCTION MANAGEMENT

THE KEITH COMPANIES NEVADA  
4052 SO. INDUSTRIAL RD. LAS VEGAS, NV 89103 (702) 753-0660

HOWARD HUGHES PROPERTIES  
SUMMERLIN VILLAGE 7 - THE TRAILS - UNIT 2  
TRAILWOOD DRIVE  
PLAN AND PROFILE  
STA 60+00 - STA 65+00

SHEET  
**ST-8**  
SHT 18 OF 48

DATE APPROVAL  
REVISION DESCRIPTION DATE APPROVAL

REVISION 1  
REVISION 2  
REVISION 3

REVISION 4  
REVISION 5

REVISION 6  
REVISION 7

REVISION 8  
REVISION 9

REVISION 10  
REVISION 11

REVISION 12  
REVISION 13

REVISION 14  
REVISION 15

REVISION 16  
REVISION 17

REVISION 18  
REVISION 19

REVISION 20  
REVISION 21

REVISION 22  
REVISION 23

REVISION 24  
REVISION 25

REVISION 26  
REVISION 27

REVISION 28  
REVISION 29

REVISION 30  
REVISION 31

REVISION 32  
REVISION 33

REVISION 34  
REVISION 35

REVISION 36  
REVISION 37

REVISION 38  
REVISION 39

REVISION 40  
REVISION 41

REVISION 42  
REVISION 43

REVISION 44  
REVISION 45

REVISION 46  
REVISION 47

REVISION 48  
REVISION 49

REVISION 50  
REVISION 51

REVISION 52  
REVISION 53

REVISION 54  
REVISION 55

REVISION 56  
REVISION 57

REVISION 58  
REVISION 59

REVISION 60  
REVISION 61

REVISION 62  
REVISION 63

REVISION 64  
REVISION 65

REVISION 66  
REVISION 67

REVISION 68  
REVISION 69

REVISION 70  
REVISION 71

REVISION 72  
REVISION 73

REVISION 74  
REVISION 75

REVISION 76  
REVISION 77

REVISION 78  
REVISION 79

REVISION 80  
REVISION 81

REVISION 82  
REVISION 83

REVISION 84  
REVISION 85

REVISION 86  
REVISION 87

REVISION 88  
REVISION 89

REVISION 90  
REVISION 91

REVISION 92  
REVISION 93

REVISION 94  
REVISION 95

REVISION 96  
REVISION 97

REVISION 98  
REVISION 99

REVISION 100  
REVISION 101

REVISION 102  
REVISION 103

REVISION 104  
REVISION 105

REVISION 106  
REVISION 107

REVISION 108  
REVISION 109

REVISION 110  
REVISION 111

REVISION 112  
REVISION 113

REVISION 114  
REVISION 115

REVISION 116  
REVISION 117

REVISION 118  
REVISION 119

REVISION 120  
REVISION 121

REVISION 122  
REVISION 123

REVISION 124  
REVISION 125

REVISION 126  
REVISION 127

REVISION 128  
REVISION 129

REVISION 130  
REVISION 131

REVISION 132  
REVISION 133

REVISION 134  
REVISION 135

REVISION 136  
REVISION 137

REVISION 138  
REVISION 139

REVISION 140  
REVISION 141

REVISION 142  
REVISION 143

REVISION 144  
REVISION 145

REVISION 146  
REVISION 147

REVISION 148  
REVISION 149

REVISION 150  
REVISION 151

REVISION 152  
REVISION 153

REVISION 154  
REVISION 155

REVISION 156  
REVISION 157

REVISION 158  
REVISION 159

REVISION 160  
REVISION 161

REVISION 162  
REVISION 163

REVISION 164  
REVISION 165

REVISION 166  
REVISION 167

REVISION 168  
REVISION 169

REVISION 170  
REVISION 171

REVISION 172  
REVISION 173

REVISION 174  
REVISION 175

REVISION 176  
REVISION 177

REVISION 178  
REVISION 179

REVISION 180  
REVISION 181

REVISION 182  
REVISION 183

REVISION 184  
REVISION 185

REVISION 186  
REVISION 187

REVISION 188  
REVISION 189

REVISION 190  
REVISION 191

REVISION 192  
REVISION 193

REVISION 194  
REVISION 195

REVISION 196  
REVISION 197

REVISION 198  
REVISION 199

REVISION 200  
REVISION 201

REVISION 202  
REVISION 203

REVISION 204  
REVISION 205

REVISION 206  
REVISION 207

REVISION 208  
REVISION 209

REVISION 210  
REVISION 211

REVISION 212  
REVISION 213

REVISION 214  
REVISION 215

REVISION 216  
REVISION 217

REVISION 218  
REVISION 219

REVISION 220  
REVISION 221

REVISION 222  
REVISION 223

REVISION 224  
REVISION 225

REVISION 226  
REVISION 227

REVISION 228  
REVISION 229

REVISION 230  
REVISION 231

REVISION 232  
REVISION 233

REVISION 234  
REVISION 235

REVISION 236  
REVISION 237

REVISION 238  
REVISION 239

REVISION 240  
REVISION 241

REVISION 242  
REVISION 243

REVISION 244  
REVISION 245

REVISION 246  
REVISION 247

REVISION 248  
REVISION 249

REVISION 250  
REVISION 251

REVISION 252  
REVISION 253

REVISION 254  
REVISION 255

REVISION 256  
REVISION 257

REVISION 258  
REVISION 259

REVISION 260  
REVISION 261

REVISION 262  
REVISION 263

REVISION 264  
REVISION 265

REVISION 266  
REVISION 267

REVISION 268  
REVISION 269

REVISION 270  
REVISION 271

REVISION 272  
REVISION 273

REVISION 274  
REVISION 275

REVISION 276  
REVISION 277

REVISION 278  
REVISION 279

REVISION 280  
REVISION 281

REVISION 282  
REVISION 283

REVISION 284  
REVISION 285

REVISION 286  
REVISION 287

REVISION 288  
REVISION 289

REVISION 290  
REVISION 291

REVISION 292  
REVISION 293

REVISION 294  
REVISION 295

REVISION 296  
REVISION 297

REVISION 298  
REVISION 299

REVISION 300  
REVISION 301

REVISION 302  
REVISION 303

REVISION 304  
REVISION 305

REVISION 306  
REVISION 307

REVISION 308  
REVISION 309

REVISION 310  
REVISION 311

REVISION 312  
REVISION 313

REVISION 314  
REVISION 315

REVISION 316  
REVISION 317

REVISION 318  
REVISION 319

REVISION 320  
REVISION 321

REVISION 322  
REVISION 323

REVISION 324  
REVISION 325

REVISION 326  
REVISION 327

REVISION 328  
REVISION 329

REVISION 330  
REVISION 331

REVISION 332  
REVISION 333

REVISION 334  
REVISION 335

REVISION 336  
REVISION 337

REVISION 338  
REVISION 339

REVISION 340  
REVISION 341

REVISION 342  
REVISION 343

REVISION 344  
REVISION 345

REVISION 346  
REVISION 347

REVISION 348  
REVISION 349

REVISION 350  
REVISION 351

REVISION 352  
REVISION 353

REVISION 354  
REVISION 355

REVISION 356  
REVISION 357

REVISION 358  
REVISION 359

REVISION 360  
REVISION 361

REVISION 362  
REVISION 363

REVISION 364  
REVISION 365

REVISION 366  
REVISION 367

REVISION 368  
REVISION 369

REVISION 370  
REVISION 371

REVISION 372  
REVISION 373

REVISION 374  
REVISION 375

REVISION 376  
REVISION 377

REVISION 378  
REVISION 379

REVISION 380  
REVISION 381

REVISION 382  
REVISION 383

REVISION 384  
REVISION 385

REVISION 386  
REVISION 387

REVISION 388  
REVISION 389

REVISION 390  
REVISION 391

REVISION 392  
REVISION 393

REVISION 394  
REVISION 395

REVISION 396  
REVISION 397

REVISION 398  
REVISION 399

REVISION 400  
REVISION 401

REVISION 402  
REVISION 403

REVISION 404  
REVISION 405

REVISION 406  
REVISION 407

REVISION 408  
REVISION 409

REVISION 410  
REVISION 411

REVISION 412  
REVISION 413

REVISION 414  
REVISION 415

REVISION 416  
REVISION 417

REVISION 418  
REVISION 419

REVISION 420  
REVISION 421

REVISION 422  
REVISION 423

REVISION 424  
REVISION 425

REVISION 426  
REVISION 427

REVISION 428  
REVISION 429

REVISION 430  
REVISION 431

REVISION 432  
REVISION 433

REVISION 434  
REVISION 435

REVISION 436  
REVISION 437

REVISION 438  
REVISION 439

REVISION 440  
REVISION 441

REVISION 442  
REVISION 443

REVISION 444  
REVISION 445

REVISION 446  
REVISION 447

REVISION 448  
REVISION 449

REVISION 450  
REVISION 451

REVISION 452  
REVISION 453

REVISION 454  
REVISION 455

REVISION 456  
REVISION 457

REVISION 458  
REVISION 459

REVISION 460  
REVISION 461

REVISION 462  
REVISION 463

REVISION 464  
REVISION 465

REVISION 466  
REVISION 467

REVISION 468  
REVISION 469

REVISION 470  
REVISION 471

REVISION 472  
REVISION 473

REVISION 474  
REVISION 475

REVISION 476  
REVISION 477

REVISION 478  
REVISION 479

REVISION 480  
REVISION 481

REVISION 482  
REVISION 483

REVISION 484  
REVISION 485

REVISION 486  
REVISION 487

REVISION 488  
REVISION 489

REVISION 490  
REVISION 491

REVISION 492  
REVISION 493

REVISION 494  
REVISION 495

REVISION 496  
REVISION 497

REVISION 498  
REVISION 499

REVISION 500  
REVISION 501

REVISION 502  
REVISION 503

REVISION 504  
REVISION 505

REVISION 506  
REVISION 507

REVISION 508  
REVISION 509

REVISION 510  
REVISION 511

REVISION 512  
REVISION 513

REVISION 514  
REVISION 515

REVISION 516  
REVISION 517

REVISION 518  
REVISION 519

REVISION 520  
REVISION 521

REVISION 522  
REVISION 523

REVISION 524  
REVISION 525

REVISION 526  
REVISION 527

REVISION 528  
REVISION 529

REVISION 530  
REVISION 531

REVISION 532  
REVISION 533

REVISION 534  
REVISION 535

REVISION 536  
REVISION 537

REVISION 538  
REVISION 539

REVISION 540  
REVISION 541

REVISION 542  
REVISION 543

REVISION 544  
REVISION 545

REVISION 546  
REVISION 547

REVISION 548  
REVISION 549

REVISION 550  
REVISION 551

REVISION 552  
REVISION 553

REVISION 554  
REVISION 555

REVISION 556  
REVISION 557

REVISION 558  
REVISION 559

REVISION 560  
REVISION 561

REVISION 562  
REVISION 563

REVISION 564  
REVISION 565

REVISION 566  
REVISION 567

REVISION 568  
REVISION 569

REVISION 570  
REVISION 571

REVISION 572  
REVISION 573

REVISION 574  
REVISION 575

REVISION 576  
REVISION 577

REVISION 578  
REVISION 579

REVISION 580  
REVISION 581

REVISION 582  
REVISION 583

REVISION 584  
REVISION 585

REVISION 586  
REVISION 587

REVISION 588  
REVISION 589

REVISION 590  
REVISION 591

REVISION 592  
REVISION 593

REVISION 594  
REVISION 595

REVISION 596  
REVISION 597

REVISION 598  
REVISION 599

REVISION 600  
REVISION 601

REVISION 602  
REVISION 603

REVISION 604  
REVISION 605

REVISION 606  
REVISION 607

REVISION 608  
REVISION 609

REVISION 610  
REVISION 611

REVISION 612  
REVISION 613

REVISION 614  
REVISION 615

REVISION 616  
REVISION 617

REVISION 618  
REVISION 619

REVISION 620  
REVISION 621

REVISION 622  
REVISION 623

REVISION 624  
REVISION 625

REVISION 626  
REVISION 627

REVISION 628  
REVISION 629

REVISION 630  
REVISION 631

REVISION 632  
REVISION 633

REVISION 634  
REVISION 635

REVISION 636  
REVISION 637

REVISION 638  
REVISION 639

REVISION 640  
REVISION 641

REVISION 642  
REVISION 643

REVISION 644  
REVISION 645

REVISION 646  
REVISION 647

REVISION 648  
REVISION 649

REVISION 650  
REVISION 651

REVISION 652  
REVISION 653

REVISION 654  
REVISION 655

REVISION 656  
REVISION 657

REVISION 658  
REVISION 659

REVISION 660  
REVISION 661

REVISION 662  
REVISION 663

REVISION 664  
REVISION 665

REVISION 666  
REVISION 667

REVISION 668  
REVISION 669

REVISION 670  
REVISION 671

REVISION 672  
REVISION 673

REVISION 674  
REVISION 675

REVISION 676  
REVISION 677

REVISION 678  
REVISION 679

REVISION 680  
REVISION 681

REVISION 682  
REVISION 683

REVISION 684  
REVISION 685

REVISION 686  
REVISION 687

REVISION 688  
REVISION 689

REVISION 690  
REVISION 691

REVISION 692  
REVISION 693

REVISION 694  
REVISION 695

REVISION 696  
REVISION 697

REVISION 698  
REVISION 699

REVISION 700  
REVISION 701

REVISION 702  
REVISION 703

REVISION 704  
REVISION 705

REVISION 706  
REVISION 707

REVISION 708  
REVISION 709

REVISION 710  
REVISION 711

REVISION 712  
REVISION 713

REVISION 714  
REVISION 715

REVISION 716  
REVISION 717

REVISION 718  
REVISION 719

REVISION 720  
REVISION 721

REVISION 722  
REVISION 723

REVISION 724  
REVISION 725

REVISION 726  
REVISION 727

REVISION 728  
REVISION 729

REVISION 730  
REVISION 731

REVISION 732  
REVISION 733

REVISION 734  
REVISION 735

REVISION 736  
REVISION 737

REVISION 738  
REVISION 739

REVISION 740  
REVISION 741

REVISION 742  
REVISION 743

REVISION 744  
REVISION 745

REVISION 746  
REVISION 747

REVISION 748  
REVISION 749

REVISION 750  
REVISION 751

REVISION 752  
REVISION 753

REVISION 754  
REVISION 755

REVISION 756  
REVISION 757

REVISION 758  
REVISION 759

REVISION 760  
REVISION 761

REVISION 762  
REVISION 763

REVISION 764  
REVISION 765

REVISION 766  
REVISION 767

REVISION 768  
REVISION 769

REVISION 770  
REVISION 771

REVISION 772  
REVISION 773

REVISION 774  
REVISION 775

REVISION 776  
REVISION 777

REVISION 778  
REVISION 779

REVISION 780  
REVISION 781

REVISION 782  
REVISION 783

REVISION 784  
REVISION 785

REVISION 786  
REVISION 787

REVISION 788  
REVISION 789

REVISION 790  
REVISION 791

REVISION 792  
REVISION 793

REVISION 794  
REVISION 795

REVISION 796  
REVISION 797

REVISION 798  
REVISION 799

REVISION 800  
REVISION 801

REVISION 802  
REVISION 803

REVISION 804  
REVISION 805

REVISION 806  
REVISION 807

REVISION 808  
REVISION 809

REVISION 810  
REVISION 811

REVISION 812  
REVISION 813

REVISION 814  
REVISION 815

REVISION 816  
REVISION 817

REVISION 818  
REVISION 819

REVISION 820  
REVISION 821

REVISION 822  
REVISION 823

REVISION 824  
REVISION 825

REVISION 826  
REVISION 827

REVISION 828  
REVISION 829

REVISION 830  
REVISION 831

REVISION 832  
REVISION 833

REVISION 834  
REVISION 835

REVISION 836  
REVISION 837

REVISION 838  
REVISION 839

REVISION 840  
REVISION 841

REVISION 842  
REVISION 843

REVISION 844  
REVISION 845

REVISION 846  
REVISION 847

REVISION 848  
REVISION 849

REVISION 850  
REVISION 851

REVISION 852  
REVISION 853

REVISION 854  
REVISION 855

REVISION 856  
REVISION 857

REVISION 858  
REVISION 859

REVISION 860  
REVISION 861

REVISION 862  
REVISION 863

REVISION 864  
REVISION 865

REVISION 866  
REVISION 867

REVISION 868  
REVISION 869

REVISION 870  
REVISION 871

REVISION 872  
REVISION 873

REVISION 874  
REVISION 875

REVISION 876  
REVISION 877

REVISION 878  
REVISION 879

REVISION 880  
REVISION 881

REVISION 882  
REVISION 883

REVISION 884  
REVISION 885

REVISION 886  
REVISION 887

REVISION 888  
REVISION 889

REVISION 890  
REVISION 891

REVISION 892  
REVISION 893

REVISION 894  
REVISION 895

REVISION 896  
REVISION 897

REVISION 898  
REVISION 899

REVISION 900  
REVISION 901

REVISION 902  
REVISION 903

REVISION 904  
REVISION 905

REVISION 906  
REVISION 907

REVISION 908  
REVISION 909

REVISION 910  
REVISION 911

REVISION 912  
REVISION 913

REVISION 914  
REVISION 915

REVISION 916  
REVISION 917

REVISION 918  
REVISION 919

REVISION 920  
REVISION 921

REVISION 922  
REVISION 923

REVISION 924  
REVISION 925

REVISION 926  
REVISION 927

REVISION 928  
REVISION 929

REVISION 930  
REVISION 931

REVISION 932  
REVISION 933

REVISION 934  
REVISION 935

REVISION 936  
REVISION 937

REVISION 938  
REVISION 939

REVISION 940  
REVISION 941

REVISION 942  
REVISION 943

REVISION 944  
REVISION 945

REVISION 946  
REVISION 947

REVISION 948  
REVISION 949

REVISION 950  
REVISION 951

REVISION 952  
REVISION 953

REVISION 954  
REVISION 955

REVISION 956  
REVISION 957

REVISION 958  
REVISION 959

REVISION 960  
REVISION 961

REVISION 962  
REVISION 963

REVISION 964  
REVISION 965

REVISION 966  
REVISION 967

REVISION 968  
REVISION 969

REVISION 970  
REVISION 971

REVISION 972  
REVISION 973

REVISION 974  
REVISION 975

REVISION 976  
REVISION 977

REVISION 978  
REVISION 979

REVISION 980  
REVISION 981

REVISION 982  
REVISION 983

REVISION 984  
REVISION 985

REVISION 986  
REVISION 987

REVISION 988  
REVISION 989

REVISION 990  
REVISION 991

REVISION 992  
REVISION 993

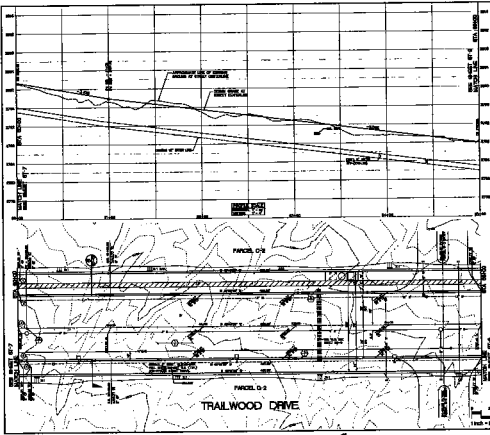
REVISION 994  
REVISION 995

REVISION 996  
REVISION 997

REVISION 998  
REVISION 999

REVISION 1000  
REVISION 1001

HP DesignJet 6001 HP-GL/2 ADI 4.2 plotter driver by Hewlett-Packard 1.0



**REVISIONS**

① REVISIONS TO BE MADE BY THE ENGINEER

② REVISIONS TO BE MADE BY THE ARCHITECT

③ REVISIONS TO BE MADE BY THE CITY ENGINEER

④ REVISIONS TO BE MADE BY THE STATE ENGINEER

**STREET LIGHTING AND ELECTRICAL**

SEE SPECIFICATIONS AND NOTES FOR DETAILS

**NOTES**

SEE SPECIFICATIONS AND NOTES FOR DETAILS

SEE SPECIFICATIONS AND NOTES FOR DETAILS

SEE SPECIFICATIONS AND NOTES FOR DETAILS

NO.	DATE	DESCRIPTION
1		
2		
3		
4		
5		
6		
7		
8		
9		
10		



RECORD DRAWING

PROJECT NO. 11-2-77  
 SHEET NO. ST-5  
 DATE: 11-2-77  
 DRAWN BY: [Signature]  
 CHECKED BY: [Signature]  
 ENGINEER: [Signature]  
 ARCHITECT: [Signature]  
 CITY ENGINEER: [Signature]  
 STATE ENGINEER: [Signature]

11-2-77