

CONSTRUCTION NOTES (WATER)

- INSTALL ALL WATER MAINS AND APPURTENANCES PER L.V.V.W.D. STD. PLATES
- INSTALL 655.16 L.F. 8" PVC (C-900) WATER PIPE.
- INSTALL 1 EA. END CAP AND CORP STOP PER S.I.S. STD. NO. V-32. (LVVWD STD PLATE NO 4)
- INSTALL 4 EA. 8" X 45" FITTING AND THURST BLOCKS PER L.V.V.W.D.
- INSTALL 2 EA. 12" X 8" REDUCERS.

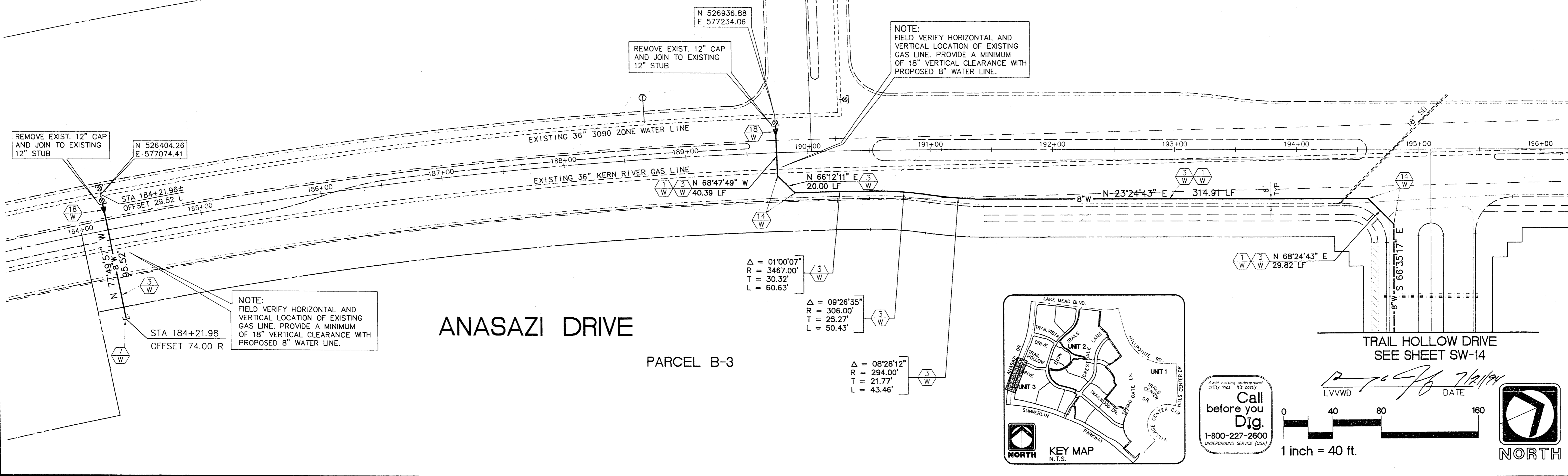
RECORD DRAWING
RECORD INFORMATION PROVIDED BY FIELD CONTRACTOR

REV.	DATE	DESCRIPTION	DATE	APPROVAL
1	7/19/94			
2				
3				
4				
5				

RECOMMENDED
 ENGINEERING
 ARCHITECTURE
 LAND SURVEYING
 PROJECT MANAGEMENT
THE KEITH COMPANIES
 NEVADA
 4032 SO. INDUSTRIAL RD. LAS VEGAS, NV 89103 (702) 733-0850

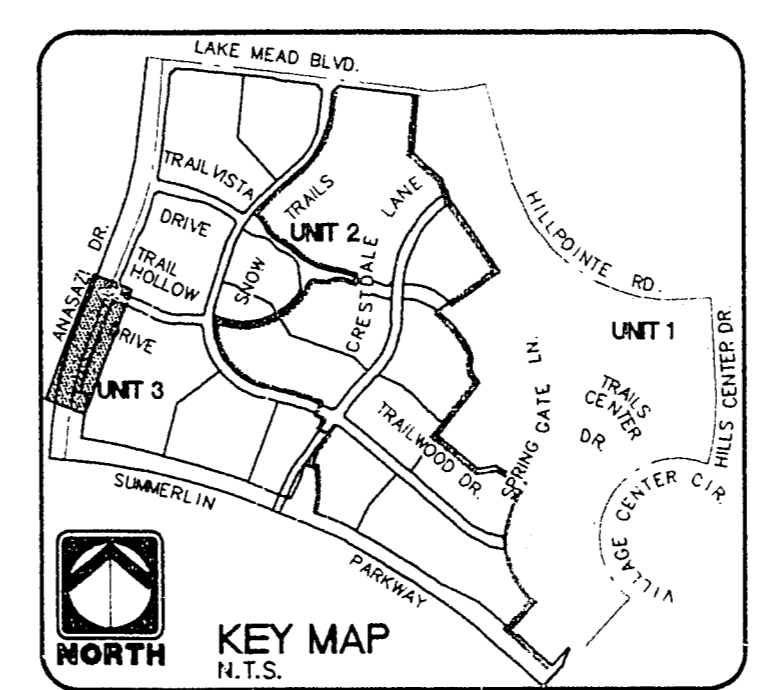
**VILLAGE 10
THOMAS W. RYAN BLVD.**

FOR IMPROVEMENTS IN ANASAZI DRIVE SEE
 VILLAGE 7 ANASAZI DRIVE IMPROVEMENTS
 SUMMERLIN PARKWAY TO LAKE MEAD
 BOULEVARD STATION 176+76.16 TO
 220+41.29.

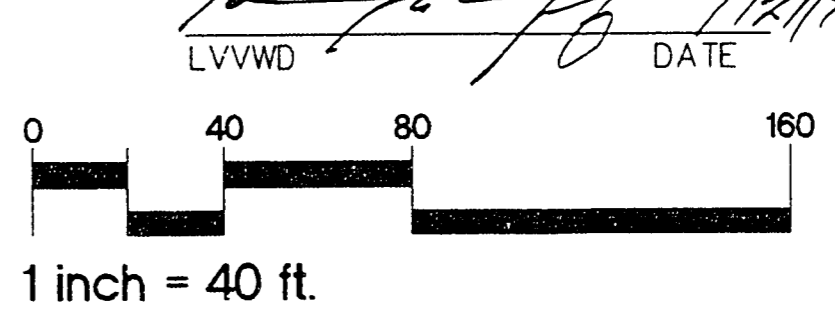


ANASAZI DRIVE

PARCEL B-3



Call before you Dig.
 1-800-227-2600
 UNDERGROUND SERVICE (USA)



HOWARD HUGHES PROPERTIES
 SUMMERLIN VILLAGE 7 - THE TRAILS
OFFSITE ANASAZI DRIVE WATER PLAN

SHEET
SW-17
 SHT 46 OF 54

3. 5/24/00 10:40:54 AM. User: s1112 20:54:38. 1994. SAVED: 1-9. PROJECT: 10. SBL: 10 11 6. UP: 485-594*10
 4. Des: s1112 20:54:38. 1994. SAVED: 1-9. PROJECT: 10. SBL: 10 11 6. UP: 485-594*10

11-2-95

307Y-4271-3