

CONSTRUCTION NOTES

STREET IMPROVEMENTS

- 1 CONSTRUCT 2" ASPHALT PAVEMENT WITH 4" TYPE II AGGREGATE BASE OVER 7" TYPE I AGGREGATE BASE
- 2 CONSTRUCT CONCRETE SIDEWALK PER SUMMERLIN STANDARD DRAWING S-72
- 3 CONSTRUCT "6" "L" TYPE CONCRETE CURB AND GUTTER PER SUMMERLIN STANDARD DRAWING S-47.
- 4 CONSTRUCT SIDEWALK RAMP (CASE II) PER SUMMERLIN STANDARD DRAWING S-75.
- 5 CONSTRUCT CONCRETE CROSS GUTTER PER SUMMERLIN STANDARD DRAWING S-64.
- 6 INSTALL TYPE III MONUMENT PER SUMMERLIN STANDARD DRAWING S-85.
- 7 INSTALL 1-6" AND 2-4" SDR 35 PVC IRRIGATION SLEEVES.

SEWER

- 1 INSTALL STANDARD 4" SEWER MANHOLE PER CLARK COUNTY SANITATION DISTRICT STANDARD DRAWINGS.
- 2 INSTALL 8" PVC (SDR-35) SEWER LINE.

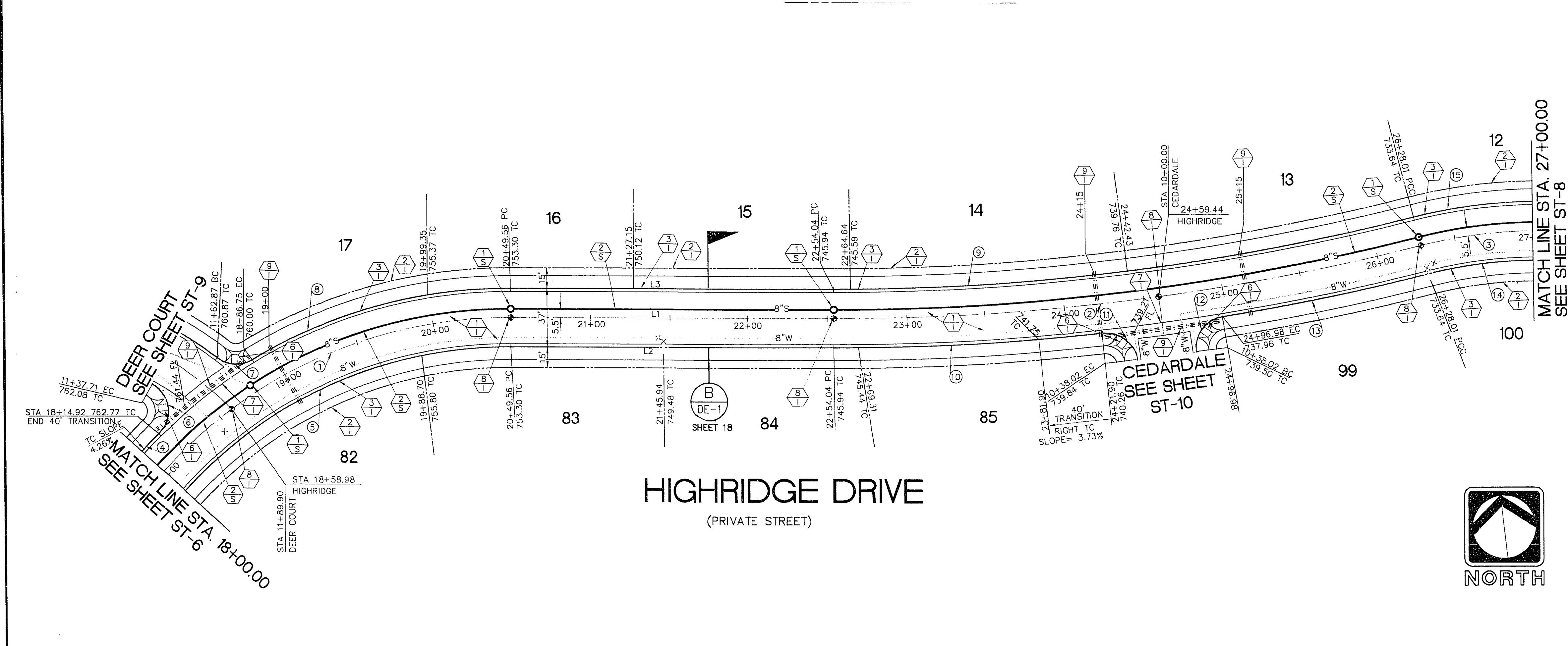
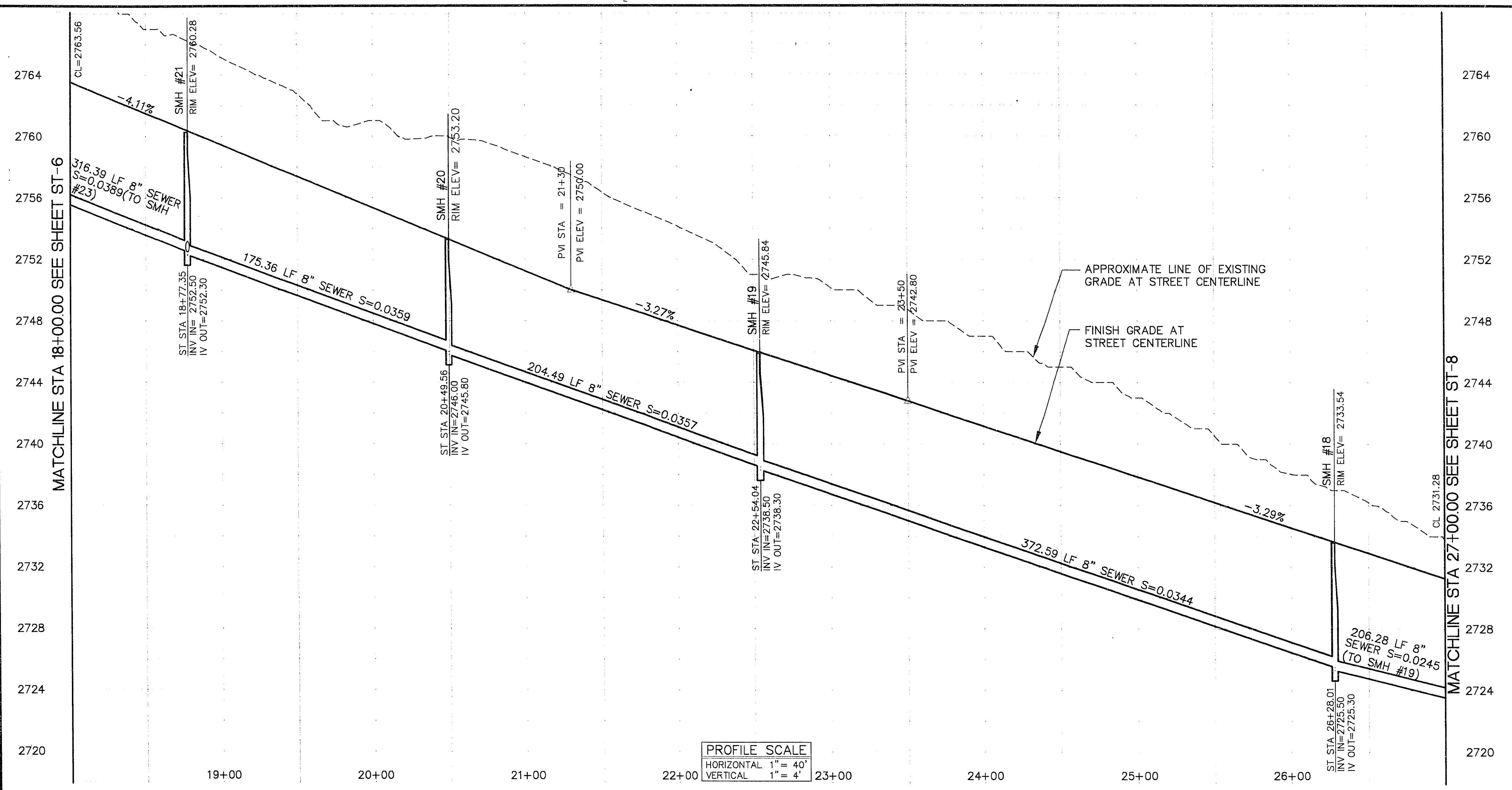
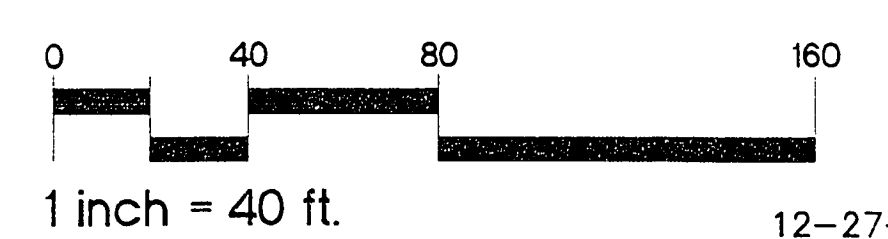
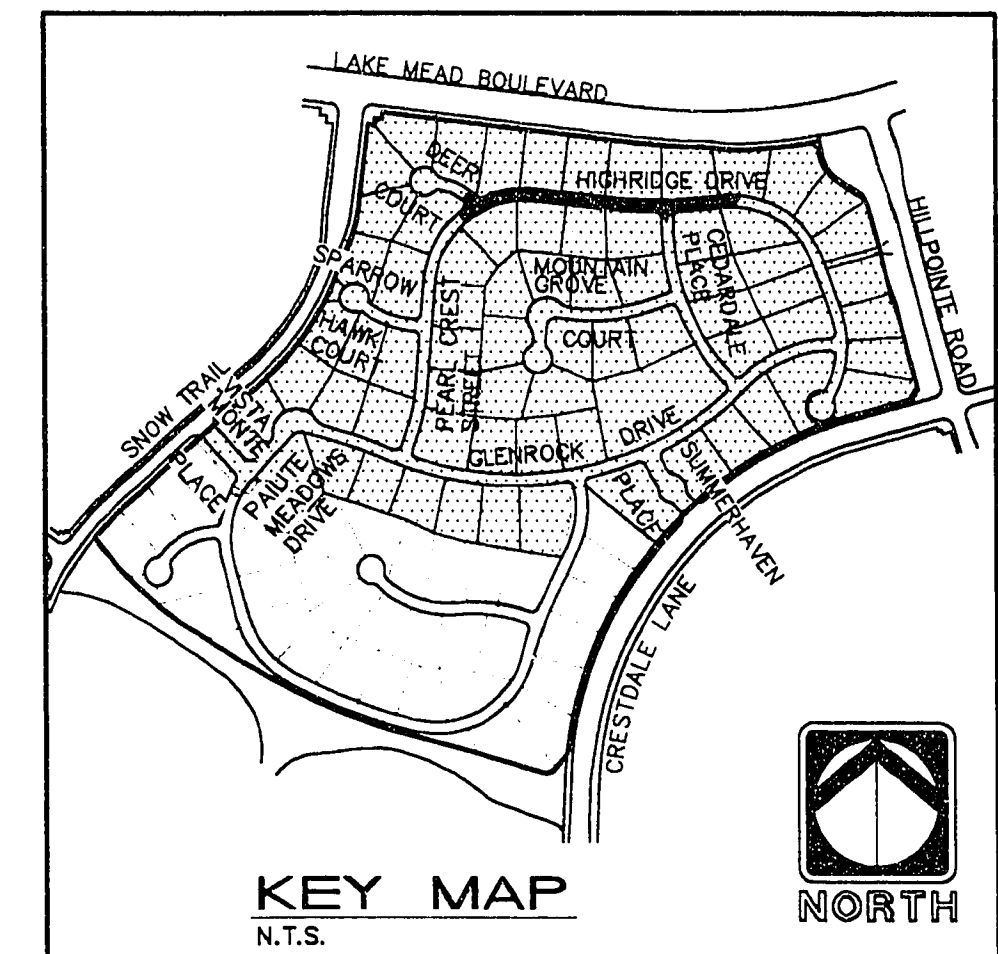
NOTES:

- 1) ADD 2000 FEET TO ALL GRADES SHOWN ON PLAN VIEW
- 2) ALL SEWER, WATER, AND STORM DRAIN SHOWN HEREON ARE PUBLIC UNLESS OTHERWISE NOTED.
- 3) ALL CURVED SEWER REQUIRES LINE AND GRADE STAKES AT AN INTERVAL NOT TO EXCEED 25'.
- 4) ALL STREETS ARE PUBLIC UTILITY EASEMENTS AND CITY OF LAS VEGAS SEWER EASEMENTS

CURVE NUMBERS ARE SHOWN (O) ON PLANS

CURVE	RADIUS	LENGTH	TANGENT	DELTA
1	300.00'	249.56'	132.51'	47°39'43"
2	1500.00'	373.96'	187.96'	141°7'04"
3	300.00'	71.99'	36.17'	13°44'57"
4	318.50'	15.84'	7.92'	02°50'58"
5	281.50'	234.17'	124.34'	47°39'43"
6	20.00'	36.60'	26.00'	104°51'29"
7	20.00'	23.96'	13.65'	68°37'47"
8	318.50'	172.85'	88.61'	31°05'38"
9	1481.50'	369.35'	185.64'	141°7'04"
10	1518.50'	169.93'	85.05'	06°24'42"
11	20.00'	30.92'	19.51'	88°33'58"
12	20.00'	30.92'	19.51'	88°33'58"
13	1518.50'	132.64'	66.36'	03°00'17"
14	281.50'	67.55'	33.94'	13°44'57"
15	318.50'	76.43'	38.40'	13°44'57"

LINE	DIRECTION	DISTANCE
L1	S 83°14'48" E	204.49'
L2	S 83°14'48" E	204.49'
L3	N 83°14'48" W	204.49'



RECOMMENDED: 1-10-95

PLANNING, ENGINEERING, SURVEYING, LANDSCAPE ARCHITECTURE, LAND SURVEYING, CONSTRUCTION MANAGEMENT

THE KEITH COMPANIES NEVADA
4662 SO. INDUSTRIAL RD., LAS VEGAS, NV 89103 (702) 733-0350

ENGINEER: [Signature]

SUMMERLIN VILLAGE 7
HIGHRIDGE DRIVE
PLAN AND PROFILE (PRIVATE STREET)
HIGHRIDGE DRIVE STA 18+00.00 - 27+00.00

SHEET ST-7

12-27-94 SHT 13 OF 27

3. SHEET: P-5105107, Date: Feb. 14, 1995, 2:30 PM, 1995. SHOWN: -S, WHITEOUT, 10, SOLID, 11 & UP, 465-50410
 4. Description: 2001 HP 3.2 457.4.2 Driver driven by Hewlett-Packard 1.0

11-19-219 1074-4371