

FINAL MAP OF SUMMERLIN VILLAGE 3 UNIT NO. 2 A PLANNED COMMUNITY

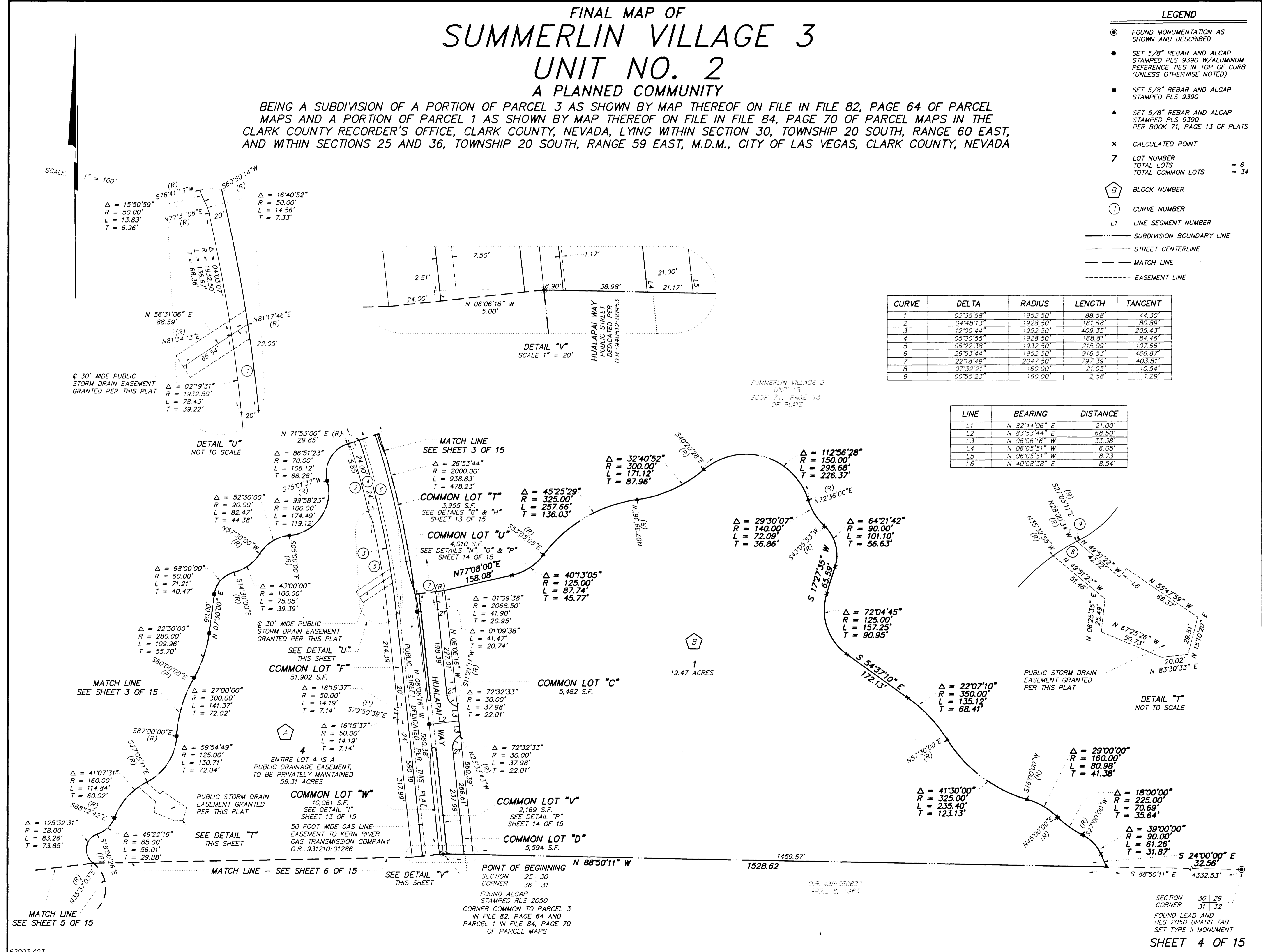
BEING A SUBDIVISION OF A PORTION OF PARCEL 3 AS SHOWN BY MAP THEREOF ON FILE IN FILE 82, PAGE 64 OF PARCEL MAPS AND A PORTION OF PARCEL 1 AS SHOWN BY MAP THEREOF ON FILE IN FILE 84, PAGE 70 OF PARCEL MAPS IN THE CLARK COUNTY RECORDER'S OFFICE, CLARK COUNTY, NEVADA, LYING WITHIN SECTION 30, TOWNSHIP 20 SOUTH, RANGE 60 EAST, AND WITHIN SECTIONS 25 AND 36, TOWNSHIP 20 SOUTH, RANGE 59 EAST, M.D.M., CITY OF LAS VEGAS, CLARK COUNTY, NEVADA

LEGEND

- FOUND MONUMENTATION AS SHOWN AND DESCRIBED
- SET 5/8" REBAR AND ALCAP STAMPED PLS 9390 W/ALUMINUM REFERENCE TIES IN TOP OF CURB (UNLESS OTHERWISE NOTED)
- SET 5/8" REBAR AND ALCAP STAMPED PLS 9390
- ▲ SET 5/8" REBAR AND ALCAP STAMPED PLS 9390 PER BOOK 71, PAGE 13 OF PLATS
- ✱ CALCULATED POINT
- 7 LOT NUMBER
TOTAL LOTS = 6
TOTAL COMMON LOTS = 34
- ⬡ BLOCK NUMBER
- ① CURVE NUMBER
- L1 LINE SEGMENT NUMBER
- SUBDIVISION BOUNDARY LINE
- STREET CENTERLINE
- MATCH LINE
- EASEMENT LINE

CURVE	DELTA	RADIUS	LENGTH	TANGENT
1	02°35'58"	1952.50'	88.58'	44.30'
2	04°48'13"	1928.50'	161.68'	80.89'
3	12°00'44"	1952.50'	409.35'	205.43'
4	05°00'55"	1928.50'	168.81'	84.46'
5	06°22'38"	1932.50'	215.09'	107.66'
6	26°53'44"	1952.50'	916.53'	466.87'
7	22°18'49"	2047.50'	797.39'	403.81'
8	07°32'23"	160.00'	21.05'	10.54'
9	00°55'23"	160.00'	2.58'	1.29'

LINE	BEARING	DISTANCE
L1	N 82°44'06" E	21.00'
L2	N 83°53'44" E	68.50'
L3	N 06°06'16" W	33.38'
L4	N 06°05'51" W	6.05'
L5	N 06°05'51" W	8.73'
L6	N 40°08'38" E	8.54'



SCALE: 1" = 100'

DETAIL "V"
SCALE 1" = 20'

DETAIL "U"
NOT TO SCALE

DETAIL "T"
NOT TO SCALE

POINT OF BEGINNING
SECTION 25 | 30
CORNER 36 | 31
FOUND ALCAP
STAMPED PLS 2050
CORNER COMMON TO PARCEL 3
IN FILE 82, PAGE 64 AND
PARCEL 1 IN FILE 84, PAGE 70
OF PARCEL MAPS

C.R. 135,305,697
APRIL 8, 1963

SECTION 30 | 29
CORNER 31 | 32
FOUND LEAD AND
PLS 2050 BRASS TAB
SET TYPE II MONUMENT
SHEET 4 OF 15

