

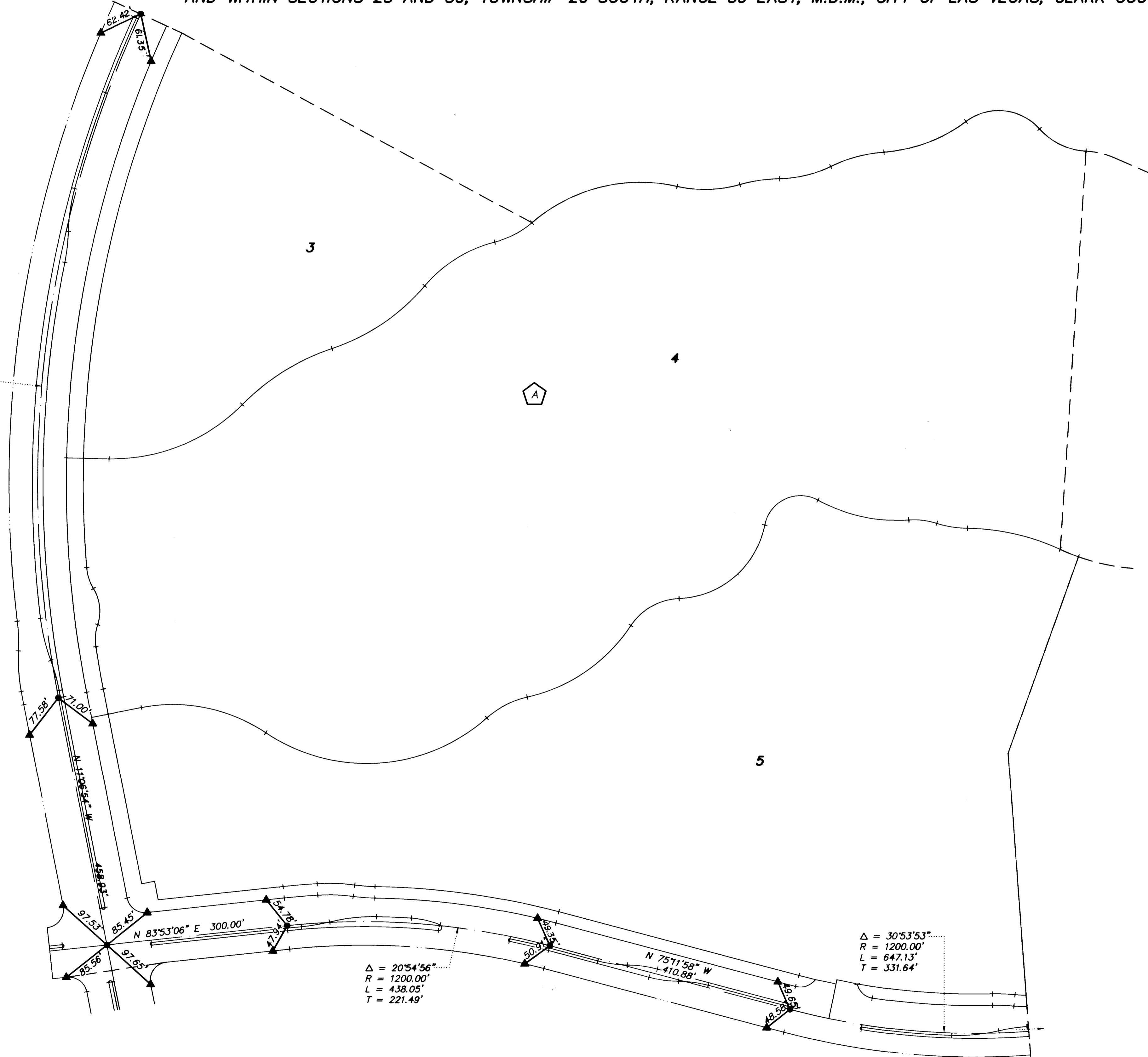
MONUMENT TIE MAP OF SUMMERLIN VILLAGE 3 UNIT NO. 2 A PLANNED COMMUNITY

BEING A SUBDIVISION OF A PORTION OF PARCEL 3 AS SHOWN BY MAP THEREOF ON FILE IN FILE 82, PAGE 64 OF PARCEL MAPS AND A PORTION OF PARCEL 1 AS SHOWN BY MAP THEREOF ON FILE IN FILE 84, PAGE 70 OF PARCEL MAPS IN THE CLARK COUNTY RECORDER'S OFFICE, CLARK COUNTY, NEVADA, LYING WITHIN SECTION 30, TOWNSHIP 20 SOUTH, RANGE 60 EAST, AND WITHIN SECTIONS 25 AND 36, TOWNSHIP 20 SOUTH, RANGE 59 EAST, M.D.M., CITY OF LAS VEGAS, CLARK COUNTY, NEVADA

LEGEND	
▲	SET 2" ALUMINUM REFERENCE MARKER STAMPED PLS 11174
●	SET 5/8" REBAR AND ALUM. CAP STAMPED P.L.S. 11174
3	LOT NUMBER
A	BLOCK NUMBER

SCALE: 1" = 100'

$\Delta = 35^{\circ}51'30''$
 $R = 1850.00'$
 $L = 1157.82'$
 $T = 598.57'$



$\Delta = 20^{\circ}54'56''$
 $R = 1200.00'$
 $L = 438.05'$
 $T = 221.49'$

$\Delta = 30^{\circ}53'53''$
 $R = 1200.00'$
 $L = 647.13'$
 $T = 331.64'$

2186

MONUMENT THE MAP OF
SUMMERLIN VILLAGE 3
UNIT NO. 2
 A PLANNED COMMUNITY

BEING A SUBDIVISION OF A PORTION OF PARCEL 2 AS SHOWN BY MAP THEREOF ON FILE IN FILE NO. 1906, 94 OF PARCEL 34 AND A PORTION OF PARCEL 1 AS SHOWN BY MAP THEREOF ON FILE IN FILE NO. 1906, 94 OF PARCEL 34 IN THE CLARK COUNTY REGISTER'S OFFICE, CLARK COUNTY, NEVADA, 1984; BEING SECTION 20, TOWNSHIP 20 SOUTH, RANGE 80 EAST, AND BEING SECTIONS 20 AND 26, TOWNSHIP 20 SOUTH, RANGE 80 EAST, BLK.M., CITY OF LAS VEGAS, CLARK COUNTY, NEVADA.

- LEGEND**
- CITY CENTER POINT
 - BEARING POINT
 - BEARING POINT AND AREA
 - CITY CENTER
 - AREA POINT

