

# MONUMENT TIE MAP OF SUMMERLIN VILLAGE 3 UNIT NO. 1B

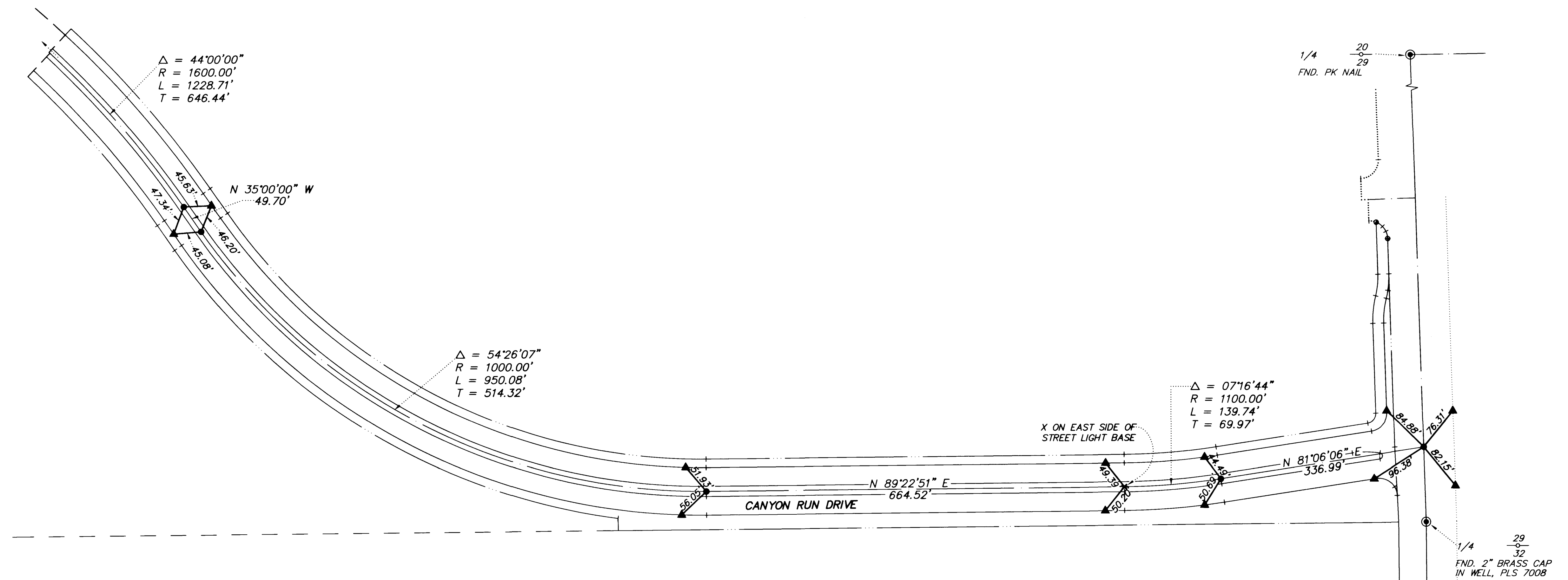
## A PLANNED COMMUNITY

BEING A SUBDIVISION OF A PORTION OF PARCEL 3 AS SHOWN BY MAP THEREOF ON FILE IN FILE 82, PAGE 64 OF PARCEL MAPS IN THE CLARK COUNTY RECORDER'S OFFICE, CLARK COUNTY, NEVADA, LYING WITHIN SECTION 25, TOWNSHIP 20 SOUTH, RANGE 59 EAST, AND WITHIN SECTIONS 29 AND 30, TOWNSHIP 20 SOUTH, RANGE 60 EAST, M.D.M., CITY OF LAS VEGAS, CLARK COUNTY, NEVADA

### LEGEND

- ▲ SET 2" ALUMINUM REFERENCE TIE IN TOP OF CURB, STAMPED PLS 11174
- ⊙ 5/8" REBAR AND ALCAP STAMPED PLS 9390
- SET 5/8" REBAR AND ALUM. CAP STAMPED P.L.S. 11174
- 1 LOT NUMBER
- ⬡ BLOCK NUMBER

SCALE: 1" = 100'



MONUMENT THE MAP OF  
**SUMMERLIN VILLAGE 3**  
**UNIT NO. 1B**

A PLANNED COMMUNITY

BEING A SUBDIVISION OF A PORTION OF PARCEL 3 AS SHOWN BY MAP THEREOF ON FILE IN FILE NO. PAGE 64 OF PARCEL MAPS IN THE CLAY COUNTY RECORDER'S OFFICE, CLAY COUNTY, MISSOURI, LYING BETWEEN SECTION 20, TOWNSHIP 30 NORTH, RANGE 20 EAST, AND BETWEEN SECTIONS 28 AND 30, TOWNSHIP 30 NORTH, RANGE 20 EAST, MERIDIAN, CITY OF LAWRENCE, CLAY COUNTY, MISSOURI.

- LEGEND**
- 60' C. & G. EASEMENT
  - 10' EASEMENT
  - 5' EASEMENT
  - 1' EASEMENT
  - 1' EASEMENT
  - 1' EASEMENT

