

# MONUMENT TIE MAP OF SUMMERLIN VILLAGE 3 UNIT NO. 1B

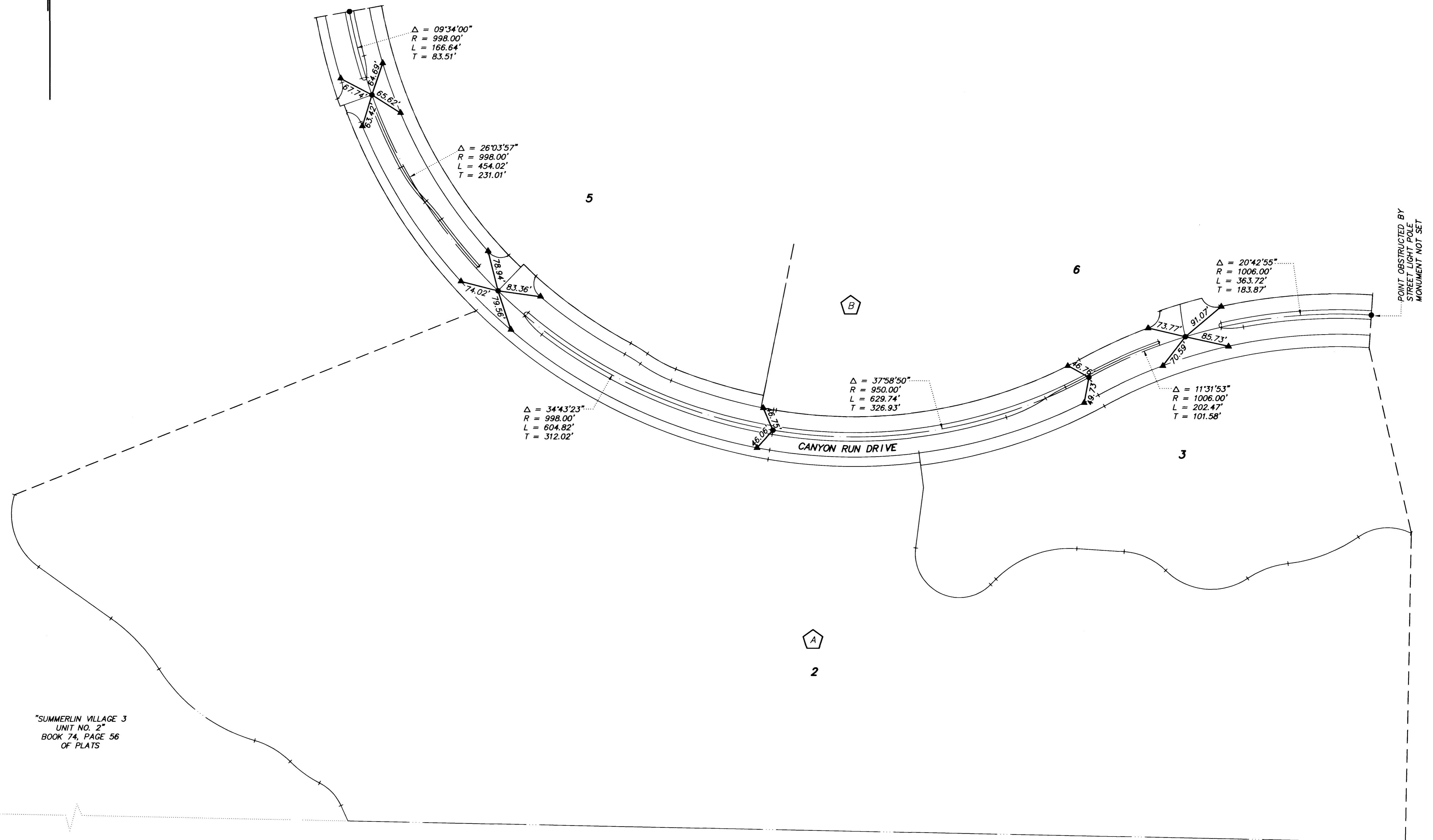
## A PLANNED COMMUNITY

BEING A SUBDIVISION OF A PORTION OF PARCEL 3 AS SHOWN BY MAP THEREOF ON FILE IN FILE 82, PAGE 64 OF PARCEL MAPS IN THE CLARK COUNTY RECORDER'S OFFICE, CLARK COUNTY, NEVADA, LYING WITHIN SECTION 25, TOWNSHIP 20 SOUTH, RANGE 59 EAST, AND WITHIN SECTIONS 29 AND 30, TOWNSHIP 20 SOUTH, RANGE 60 EAST, M.D.M., CITY OF LAS VEGAS, CLARK COUNTY, NEVADA

### LEGEND

- ▲ SET 2" ALUMINUM REFERENCE TIE IN TOP OF CURB, STAMPED PLS 11174
- ⊙ 5/8" REBAR AND ALCAP STAMPED PLS 9390
- SET 5/8" REBAR AND ALUM. CAP STAMPED P.L.S. 11174
- 1 LOT NUMBER
- ⬡ BLOCK NUMBER

SCALE: 1" = 100'



"SUMMERLIN VILLAGE 3  
UNIT NO. 2"  
BOOK 74, PAGE 56  
OF PLATS

27100

MONUMENT THE MAP OF  
**SUMMERLIN VILLAGE 3 UNIT NO. 1B**

A PLANNED COMMUNITY

BEING A SUBDIVISION OF A PORTION OF PARCEL 3 AS SHOWN BY MAP THEREOF ON FILE BY FILE NO. PAGE 84 OF PARCEL MAPS IN THE CLARK COUNTY RECORDERS OFFICE, CLARK COUNTY, NEVADA, LYING WITHIN SECTION 35, TOWNSHIP 20 SOUTH, RANGE 20 EAST, AND WITHIN SECTIONS 29 AND 30, TOWNSHIP 20 SOUTH, RANGE 20 EAST, MOUNTAIN CITY OF LAS VEGAS, CLARK COUNTY, NEVADA

- LEGEND**
- 1. 16' S. 10' W. 1/4 SECTION 35
  - 2. SECTION 35
  - 3. SECTION 29
  - 4. SECTION 30
  - 5. 1/4 SECTION 35
  - 6. 1/4 SECTION 29
  - 7. 1/4 SECTION 30
  - 8. 1/4 SECTION 35

