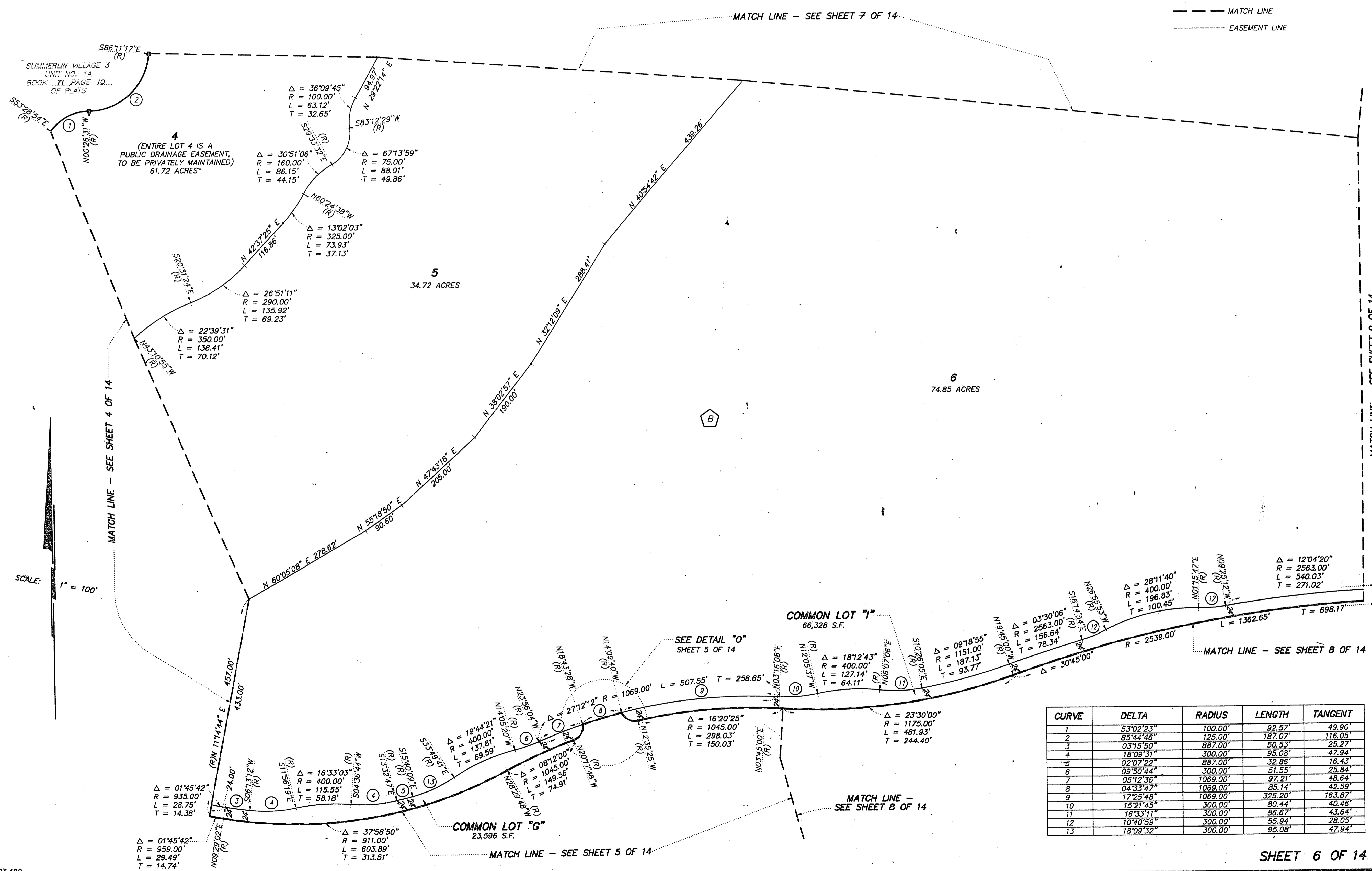


# FINAL MAP OF SUMMERLIN VILLAGE 3 UNIT NO. 1B

## A PLANNED COMMUNITY

BEING A SUBDIVISION OF A PORTION OF PARCEL 3 AS SHOWN BY MAP THEREOF ON FILE IN FILE 82, PAGE 64 OF PARCEL MAPS IN THE CLARK COUNTY RECORDER'S OFFICE, CLARK COUNTY, NEVADA, LYING WITHIN SECTION 25, TOWNSHIP 20 SOUTH, RANGE 59 EAST, AND WITHIN SECTIONS 29 AND 30, TOWNSHIP 20 SOUTH, RANGE 60 EAST, M.D.M., CITY OF LAS VEGAS, CLARK COUNTY, NEVADA

LEGEND	
●	SET 5/8" REBAR AND ALUM. CAP STAMPED P.L.S. 9390 W/ALUMINUM REFERENCE TIES IN TOP OF CURB (UNLESS OTHERWISE NOTED)
■	SET 5/8" REBAR AND ALUM. CAP STAMPED P.L.S. 9390
4	LOT NUMBER TOTAL LOTS = 7 TOTAL COMMON LOTS = 21
⬡	BLOCK NUMBER
①	CURVE NUMBER
---	SUBDIVISION BOUNDARY LINE
---	STREET CENTERLINE
---	MATCH LINE
---	EASEMENT LINE



SCALE: 1" = 100'

CURVE	DELTA	RADIUS	LENGTH	TANGENT
1	53°02'23"	100.00'	92.57'	49.90'
2	85°44'46"	125.00'	187.07'	116.05'
3	03°15'50"	887.00'	50.53'	25.27'
4	18°09'31"	300.00'	95.08'	47.94'
5	02°07'22"	887.00'	32.86'	16.43'
6	09°50'44"	300.00'	51.55'	25.84'
7	05°12'36"	1069.00'	97.21'	48.64'
8	04°33'47"	1069.00'	85.14'	42.59'
9	17°25'48"	1069.00'	325.20'	163.87'
10	15°21'45"	300.00'	80.44'	40.46'
11	16°33'11"	300.00'	86.67'	43.64'
12	10°40'59"	300.00'	55.94'	28.05'
13	18°09'32"	300.00'	95.08'	47.94'

SHEET 6 OF 14