

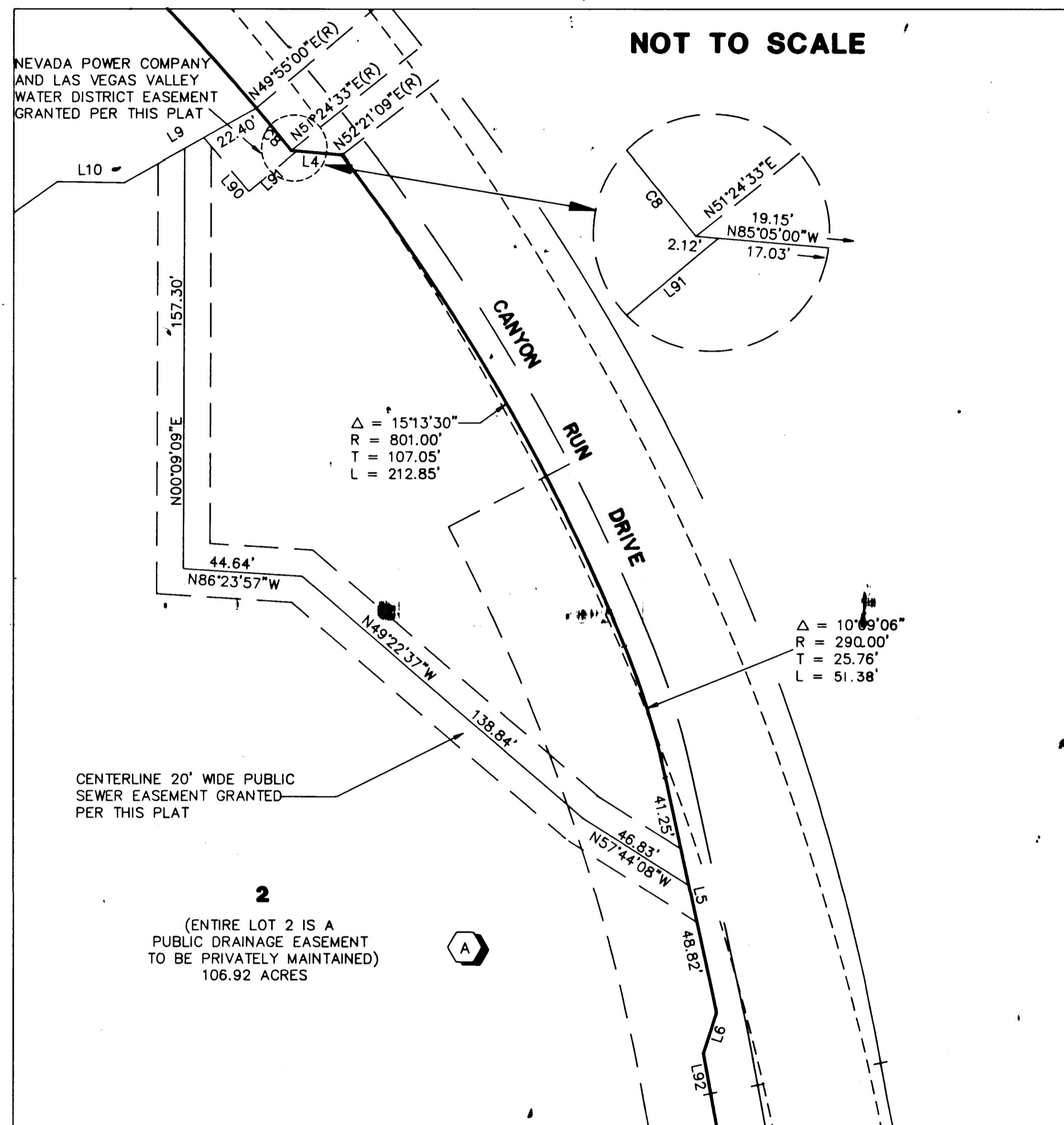
960702

01099

AMENDED MAP OF A PORTION OF SUMMERLIN VILLAGE 3 - UNIT NO. 1B (PLAT: BOOK 71, PAGE 13)

(A PLANNED COMMUNITY)
BEING A SUBDIVISION OF A PORTION OF PARCEL 3 AS SHOWN BY A MAP THEREOF ON FILE IN FILE 82, PAGE 64 OF PARCEL MAPS IN THE CLARK COUNTY RECORDER'S OFFICE, CLARK COUNTY, NEVADA, LYING WITHIN SECTION 25, TOWNSHIP 20 SOUTH, RANGE 59 EAST, AND LYING WITHIN SECTIONS 29 AND 30, TOWNSHIP 20 SOUTH, RANGE 60 EAST, M.D.M., CITY OF LAS VEGAS, CLARK COUNTY, NEVADA

DETAIL "A"



LEGEND	
	BOUNDARY LINE
	LOT LINE
	STREET CENTERLINE
	EASEMENT LINE
2	LOT NUMBER
C25	CURVE NUMBER
L22	COURSE NUMBER
R19	RADIAL LINE NUMBER
(R)	RADIAL
	BLOCK NUMBER
S.F.	SQUARE FEET
(PROD)	PRODUCED LINE

ACT	DATE	BY	REVISION
2	6/10/96	ARR	ST. NAME - BANBERRY CROSS DR. TO CANYON RUN DR.
1	3/21/96	TZ	Rev. L 32 -> L 37

LINE TABLE

LINE	DIRECTION	DISTANCE
L1	N33°00'00"W	70.88'
L2	N52°48'21"E	102.39'
L3	S62°00'00"E	124.41'
L4	S85°05'00"E	19.15'
L5	S12°16'15"E	90.07'
L6	S17°43'45"W	15.95'
L7	S19°43'38"E	15.19'
L8	N70°16'22"E	8.00'
L9	S60°42'27"W	56.68'
L10	N89°03'03"W	25.00'
L13	S54°14'35"W	25.00'
L14	S66°49'24"W	51.05'
L15	S81°46'08"W	20.00'
L16	S39°49'02"W	20.00'
L17	S89°04'35"W	25.51'
L18	S85°50'34"W	20.00'
L19	S47°12'25"W	20.00'
L20	S75°12'07"W	28.73'
L21	N70°37'25"W	20.00'
L22	S61°32'22"W	20.00'
L23	S83°25'26"W	25.16'
L24	N87°04'06"W	20.00'
L25	S52°37'54"W	20.00'
L26	S65°01'59"W	28.06'
L27	S80°36'01"W	15.00'
L28	S37°09'58"W	20.00'
L29	S54°25'46"W	25.72'
L30	N85°36'47"W	22.00'
L31	S45°22'07"W	22.00'
L32	S43°13'25"W	29.00'
L33	N69°48'45"W	19.15'
L34	S70°33'28"W	15.52'
L35	S88°28'18"W	33.00'
L36	N76°05'38"W	19.83'
L37	S55°05'25"W	17.79'
L38	S76°17'57"W	28.44'
L39	N78°52'01"W	20.00'
L40	S55°23'18"W	25.00'
L41	S77°13'56"W	35.93'
L42	N68°26'16"W	66.43'
L43	S55°33'44"W	35.00'
L44	N76°53'31"W	20.00'
L45	S55°33'44"W	52.00'
L46	N64°26'16"W	20.00'
L47	S55°33'44"W	15.00'
L48	S35°27'03"W	20.00'
L49	S62°03'03"W	24.61'
L50	S75°47'15"W	20.00'
L51	S41°04'33"W	20.00'
L52	S54°54'54"W	23.54'
L53	S72°50'49"W	26.00'
L54	S30°04'21"W	20.00'
L55	S47°52'11"W	26.42'
L56	S64°46'09"W	18.00'
L57	S29°02'08"W	25.00'
L58	S40°03'35"W	26.40'
L59	S74°26'01"W	15.00'
L60	S20°12'14"W	30.00'
L61	S41°02'12"W	15.00'
L62	S55°33'44"W	23.01'
L63	S32°01'29"W	18.00'
L64	S53°03'51"W	62.00'
L65	S77°04'26"W	25.00'
L66	N81°50'28"W	44.82'
L67	S18°17'07"W	28.00'
L68	S52°43'05"W	18.00'
L69	S05°40'02"E	29.56'
L70	S42°43'04"W	32.30'
L71	S67°20'01"W	24.00'
L72	S06°16'10"W	24.00'
L73	S67°57'00"W	15.71'
L74	S24°00'00"E	32.56'
L75	S07°16'00"E	49.44'
L76	N65°18'00"E	43.91'
L77	S03°51'51"E	5.66'
L78	S69°06'00"W	51.08'
L79	N87°10'00"W	47.76'
L80	S69°00'00"W	23.53'
L81	N87°00'00"W	46.19'
L82	S44°40'00"W	76.73'
L83	S71°52'00"W	85.00'
L84	N77°38'00"W	74.51'
L85	S49°53'00"W	84.53'
L86	S20°56'30"W	14.95'
L87	N44°39'40"E	14.82'
L88	S08°48'00"W	5.56'
L89	N35°52'47"E	41.50'
L90	N40°05'00"W	26.18'
L91	N49°55'00"E	23.23'
L92	S10°09'38"E	15.10'
L93	N64°37'14"E	50.00'
L94	S82°15'53"E	65.00'

CURVE TABLE

CURVE	RADIUS	LENGTH	TANGENT	DELTA
C1	3456.00'	92.20'	46.10'	01°31'43"
C2	279.00'	35.96'	18.01'	07°23'07"
C3	321.00'	72.03'	36.17'	12°51'23"
C4	6075.50'	119.20'	59.60'	01°07'27"
C5	272.00'	49.65'	24.90'	10°27'34"
C6	328.00'	66.08'	33.15'	11°32'36"
C7	80.00'	74.38'	40.12'	53°16'07"
C8	787.00'	20.50'	10.25'	01°29'33"
C9	125.00'	97.76'	51.53'	44°48'34"
C10	3456.00'	10.32'	5.16'	00°10'16"
C11	50.00'	24.64'	12.58'	28°14'10"
C12	50.00'	24.70'	12.61'	28°18'25"
C13	2057.50'	37.33'	18.66'	01°02'22"
C14	100.00'	23.40'	11.76'	13°24'33"
C15	100.00'	51.53'	26.35'	29°31'31"
C16	100.00'	46.81'	23.84'	26°49'06"
C17	100.00'	51.53'	26.35'	29°31'31"
C18	100.00'	23.40'	11.76'	13°24'33"
C19	2057.50'	65.33'	32.67'	01°49'09"
C20	50.00'	23.13'	11.77'	26°30'01"
C21	50.00'	24.23'	12.36'	27°46'01"
C22	160.00'	80.98'	41.38'	29°00'00"
C23	225.00'	70.69'	35.64'	18°00'00"
C24	90.00'	61.26'	31.87'	39°00'00"
C25	125.00'	89.68'	46.87'	41°06'23"
C26	175.00'	83.70'	42.66'	27°24'09"
C27	100.00'	107.30'	59.47'	61°28'40"
C28	125.00'	97.43'	51.34'	44°39'24"
C29	75.00'	80.07'	44.33'	61°10'13"
C30	65.00'	71.73'	40.01'	63°13'26"
C31	90.00'	151.88'	101.17'	96°41'23"
C32	200.00'	62.13'	31.32'	17°48'00"
C33	40.00'	36.30'	19.51'	52°00'00"
C34	40.00'	42.10'	23.23'	60°18'00"
C35	100.00'	41.42'	21.01'	23°44'00"
C36	100.00'	41.60'	21.10'	23°50'00"
C37	100.00'	41.89'	21.26'	24°00'00"
C38	150.00'	71.21'	36.29'	27°12'00"
C39	50.00'	71.06'	43.03'	81°26'00"
C40	100.00'	50.53'	25.82'	28°57'00"
C41	75.00'	37.88'	19.36'	28°56'30"
C42	90.00'	101.10'	56.63'	64°21'42"
C43	140.00'	72.09'	36.86'	29°30'07"
C44	385.00'	74.21'	37.22'	11°02'40"
C45	125.00'	56.07'	28.51'	25°42'00"
C46	1551.00'	142.28'	71.19'	05°15'22"
C47	1547.00'	46.33'	23.17'	01°42'57"
C48	1007.00'	294.40'	148.26'	16°45'02"
C49	2068.50'	131.75'	65.90'	03°38'58"
C50	3456.00'	102.52'	51.27'	01°41'59"
C51	6086.50'	22.00'	11.00'	00°12'25"
C52	6086.50'	328.49'	164.28'	03°05'32"
C53	913.00'	123.34'	61.76'	07°44'25"
C54	913.00'	192.40'	96.56'	12°04'27"
C55	6086.50'	306.49'	153.28'	02°53'07"

RADIAL LINE TABLE

LINE	DIRECTION	TYPE
R1	N30°08'54"E	
R2	N47°48'52"E	
R3	N23°07'13"W	
R4	N07°16'00"W	
R5	S41°08'09"W	
R6	S41°17'03"W	
R7	N89°24'32"E	PRC
R8	N59°53'01"E	PRC
R9	N86°42'07"E	PRC
R10	N57°10'36"E	PRC
R11	S82°08'48"E	PRC
R12	N69°37'02"E	PRC
R13	S39°04'00"E	
R14	S38°51'35"E	
R15	N40°04'27"E	

Book 74 Page 95
4444-1B

