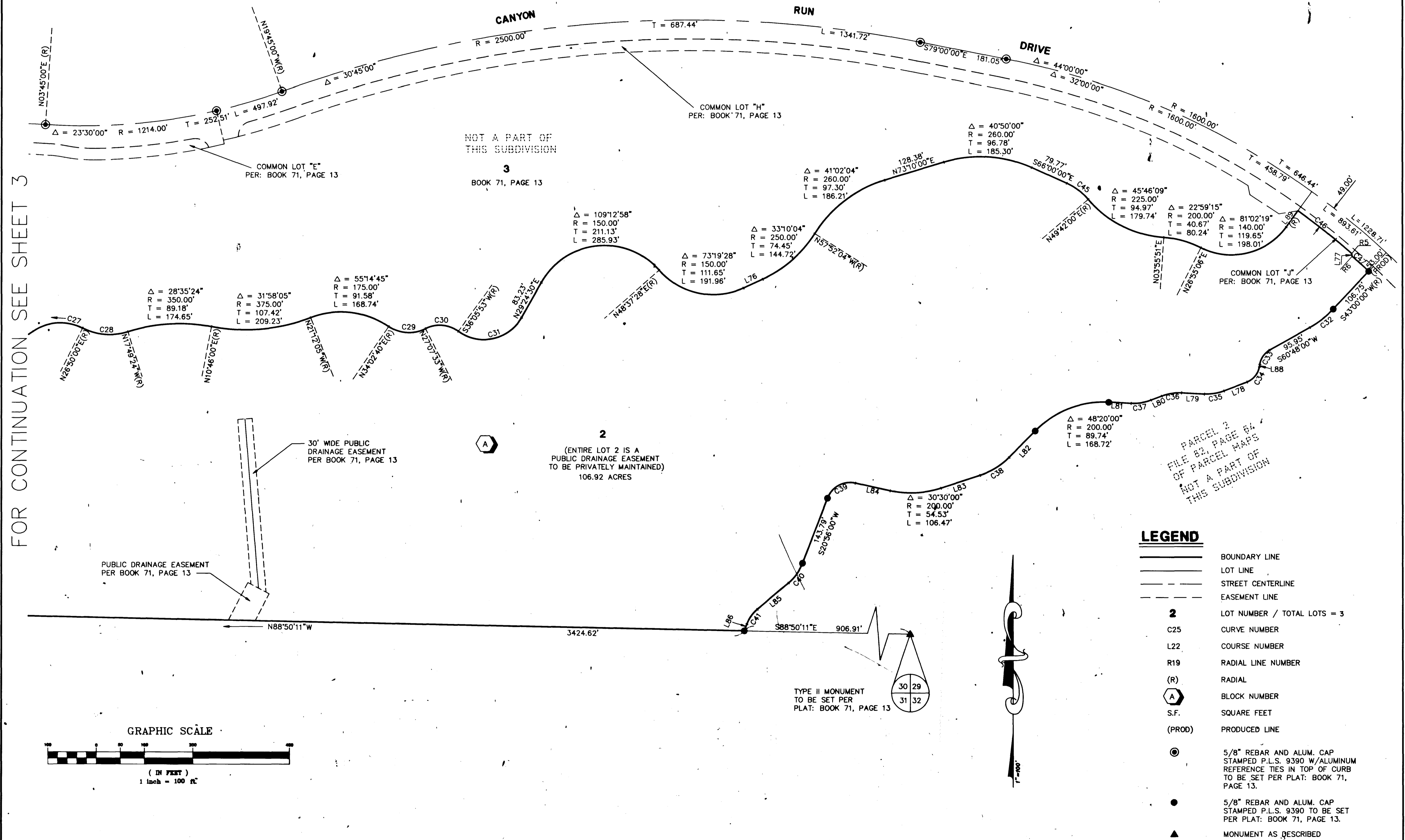


960702

01099

AMENDED MAP OF A PORTION OF SUMMERLIN VILLAGE 3 - UNIT NO. 1B (PLAT: BOOK 71, PAGE 13)

BEING A SUBDIVISION OF A PORTION OF PARCEL 3 AS SHOWN BY A MAP THEREOF ON FILE IN FILE 82, PAGE 64 OF PARCEL MAPS IN THE CLARK COUNTY RECORDER'S OFFICE, CLARK COUNTY, NEVADA, LYING WITHIN SECTION 25, TOWNSHIP 20 SOUTH, RANGE 59 EAST, AND LYING WITHIN SECTIONS 29 AND 30, TOWNSHIP 20 SOUTH, RANGE 60 EAST, M.D.M., CITY OF LAS VEGAS, CLARK COUNTY, NEVADA (A PLANNED COMMUNITY)

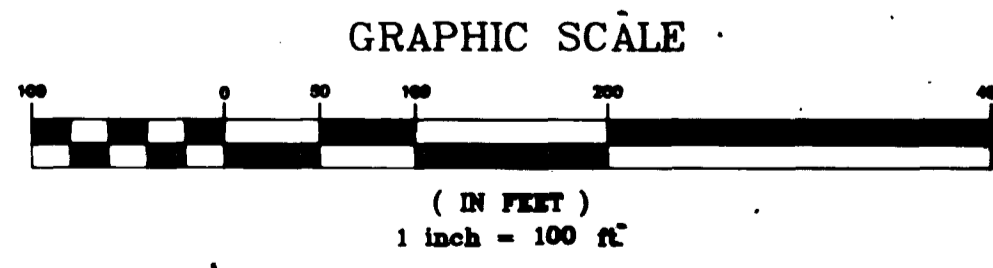


FOR CONTINUATION SEE SHEET 3

PARCEL 2
FILE 82, PAGE 64
OF PARCEL MAPS
NOT A PART OF
THIS SUBDIVISION

LEGEND

- BOUNDARY LINE
- LOT LINE
- STREET CENTERLINE
- EASEMENT LINE
- 2** LOT NUMBER / TOTAL LOTS = 3
- C25 CURVE NUMBER
- L22 COURSE NUMBER
- R19 RADIAL LINE NUMBER
- (R) RADIAL
- (A) BLOCK NUMBER
- S.F. SQUARE FEET
- (PROD) PRODUCED LINE
- 5/8" REBAR AND ALUM. CAP STAMPED P.L.S. 9390 W/ALUMINUM REFERENCE TIES IN TOP OF CURB TO BE SET PER PLAT: BOOK 71, PAGE 13.
- 5/8" REBAR AND ALUM. CAP STAMPED P.L.S. 9390 TO BE SET PER PLAT: BOOK 71, PAGE 13.
- ▲ MONUMENT AS DESCRIBED



TYPE II MONUMENT TO BE SET PER PLAT: BOOK 71, PAGE 13

ACT	DATE	BY	REVISION
1	6/10/96	ARR	ST. NAME - BANBURY CROSS DR. TO CANYON RUN DR.

W.O. 4914
SHEET 4 OF 5
ARR

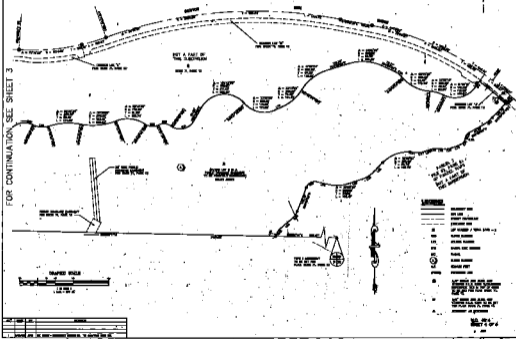
3676

Book 74 Page 95

AMENDED 4444-1B

**AMENDED MAP OF A PORTION OF
SUMMERLIN VILLAGE 3 - UNIT NO. 1B (PLAT: BOOK 71, PAGE 13)**

BEING A SUBDIVISION OF A PORTION OF PARCEL 8 AS SHOWN BY A MAP THEREOF ON FILE IN FILE 184, PAGE 84 OF PARCEL MAPS IN THE CLARK COUNTY ENGINEER'S OFFICE, CLARK COUNTY, KENTUCKY, LYING WITHIN SECTION 20, TOWNSHIP 23 SOUTH, RANGE 50 EAST, AND LYING WITHIN SECTIONS 20 AND 26, TOWNSHIP 23 SOUTH, RANGE 50 EAST, N.E.1/4, CITY OF LAS VEGAS, CLARK COUNTY, KENTUCKY (A PLANNED COMMUNITY)



NO.	DATE	DESCRIPTION