

990222

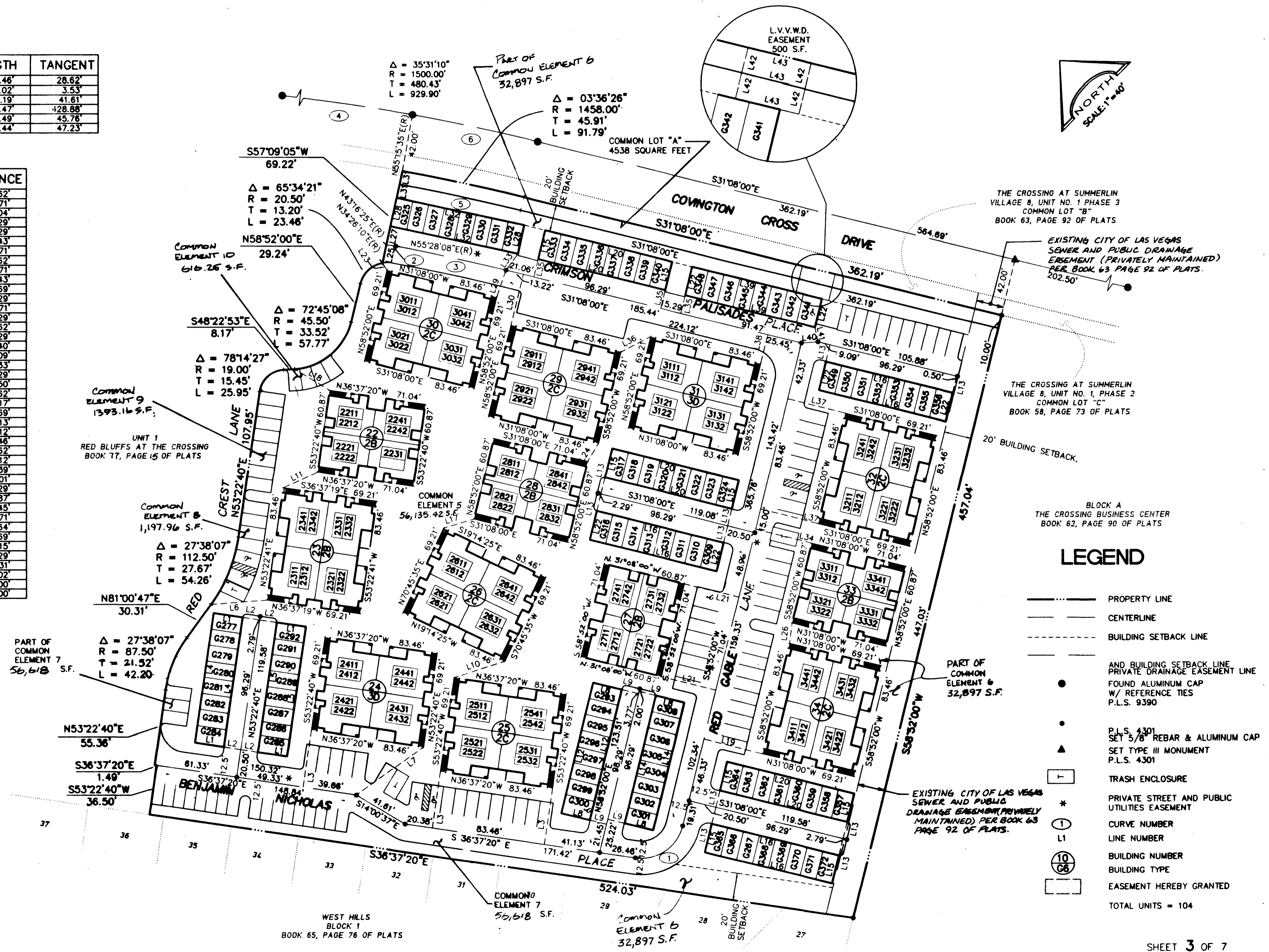
00485

# FINAL MAP OF RED BLUFFS AT THE CROSSING - UNIT 3 A CONDOMINIUM COMMON INTEREST COMMUNITY

BEING A SUBDIVISION OF A PORTION OF LOT 2, BLOCK A, AS SHOWN ON THE PLAT OF 'THE CROSSING AT SUMMERLIN VILLAGE 8 UNIT NO. 1 PHASE 3'  
IN BOOK 63, PAGE 92, OF PLATS IN THE CLARK COUNTY RECORDER'S OFFICE, LYING WITHIN A PORTION OF SECTION 25, TOWNSHIP 20 SOUTH  
RANGE 59 EAST, M.D.M., AND A PORTION OF SECTION 30, TOWNSHIP 20 SOUTH, RANGE 60 EAST, M.D.M., CITY OF LAS VEGAS, CLARK COUNTY, NEVADA.

CURVE	DELTA	RADIUS	LENGTH	TANGENT
1	84°30'40"	31.50'	46.46'	28.62'
2	12°11'43"	33.00'	7.02'	3.53'
3	03°23'53"	1402.67'	83.19'	41.61'
4	31°54'45"	1500.00'	835.47'	428.88'
5	03°37'13"	1448.00'	91.49'	45.76'
6	03°36'28"	1500.00'	94.44'	47.23'

LINE	BEARING	DISTANCE
L1	S36°37'20"E	21.62'
L2	S36°37'20"E	12.71'
L3	S53°22'40"W	42.04'
L4	S53°22'40"W	96.29'
L5	N53°22'40"E	96.29'
L6	N49°34'44"W	41.43'
L7	N80°27'15"W	60.71'
L8	S31°08'00"E	21.62'
L9	N31°08'00"W	12.71'
L10	N62°56'02"W	39.43'
L11	S69°25'38"E	27.69'
L12	S58°52'00"W	98.29'
L13	N58°52'00"E	12.71'
L14	N58°52'00"E	96.29'
L15	S58°52'00"W	21.62'
L16	S31°08'00"E	96.29'
L17	S61°00'12"E	23.40'
L18	N13°34'14"W	30.09'
L19	N31°08'00"W	44.33'
L20	N31°08'00"E	96.29'
L21	S31°08'00"E	41.50'
L22	N58°52'00"E	21.62'
L23	N13°04'04"E	6.17'
L24	N75°54'24"E	15.69'
L25	N57°09'05"E	13.13'
L26	S51°44'11"W	15.12'
L27	N57°09'05"E	14.46'
L28	S57°09'05"W	21.62'
L29	N63°41'22"E	21.12'
L30	N58°52'00"E	38.39'
L31	N57°09'05"E	10.01'
L32	N32°50'55"W	96.29'
L33	S81°40'58"W	14.87'
L34	N31°08'00"W	42.45'
L35	S58°52'00"W	13.71'
L36	S72°22'59"E	24.64'
L37	N31°08'00"W	43.69'
L38	N58°52'00"E	22.15'
L39	S31°08'00"E	98.29'
L40	N49°15'54"W	12.31'
L41	S32°35'39"W	11.02'
L42	N58°52'00"E	10.00'
L43	S31°08'00"E	25.00'



- ### LEGEND
- PROPERTY LINE
  - CENTERLINE
  - - - BUILDING SETBACK LINE
  - - - AND BUILDING SETBACK LINE PRIVATE DRAINAGE EASEMENT LINE
  - FOUND ALUMINUM CAP W/ REFERENCE TIES P.L.S. 9390
  - P.L.S. 4301 SET 5/8" REBAR & ALUMINUM CAP
  - ▲ SET TYPE III MONUMENT P.L.S. 4301
  - TRASH ENCLOSURE
  - \*
  - PRIVATE STREET AND PUBLIC UTILITIES EASEMENT
  - ① CURVE NUMBER
  - L1 LINE NUMBER
  - ⑩ BUILDING NUMBER
  - ⑩ BUILDING TYPE
  - EASEMENT HEREBY GRANTED
- TOTAL UNITS = 104

SHEET 3 OF 7  
JOB NO. 218-067-952

**LR NELSON CONSULTING ENGINEERS**  
 -STRUCTURAL 3035 E. Patrick Lane, #9  
 -CIVIL Las Vegas, NV 89120  
 -SURVEY (702) 798-7978

14001

4493-3 Book 88 Page 46

