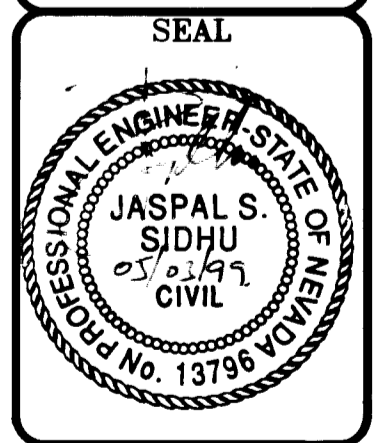


REVISIONS:

ACE ENGINEERING
 5720 S. VALLEY VIEW BLVD.
 SUITE 200, LAS VEGAS, NV 89118
 PHONE 702 596-8844 FAX 702 596-792

STREET PLAN & PROFILE
 WOLFSON & GLASS OFFICE
 601 S. 7TH STREET



DATE: 05/03/99
 JOB : 98-141
 DWG. BY: E.M.

C4

SHEET
 4 OF 4

CLV NO.
 107-V3079

BENCHMARK:

RIVET AND PLATE IN TOP OF CURB,
 EAST CURB LINE ON LITE BASE
 200 FT± SOUTH OF BONNEVILLE AVE.
 ON MAIN STREET
 BM. NO. 6C01 34 SW6
 ELEV = 617.904 METERS (NAVD 88)
 = 2027.24 FEET (NAVD 88)

BASIS OF BEARING:

S 62° 04' 52" BEING CENTERLINE OF BONNEVILLE AVE.

SOIL TESTING REPORT BY:

PROJECT NO 64985361 DEC. 7 1998
 TERRACON, 4343 SOUTH POLARIS AVE.
 LAS VEGAS NV, 89103 PHONE (702) 597-9393 FAX 597-9009

LEGAL DESCRIPTION

BEING A PORTION OF SOUTHEAST QUARTER(SE1/4) OF SOUTH HALF (S1/2)
 OF SECTION 34, TOWNSHIP 20S
 RANGE 62 EAST, M.D.B. & M. CLARK COUNTY, NEVADA

NOTE:

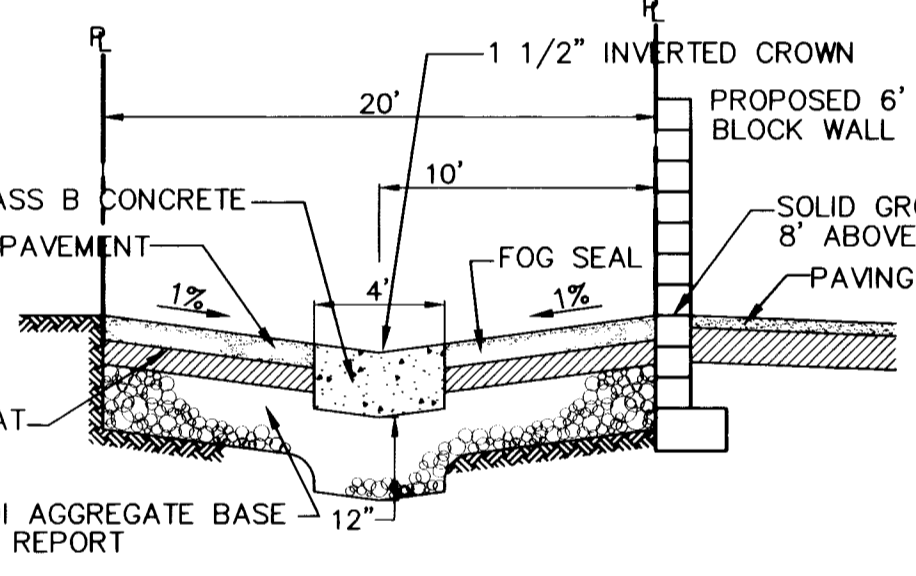
EXISTING UTILITIES ARE LOCATED ON THE PLANS FOR THE CONVENIENCE OF THE CONTRACTOR ONLY. THE ENGINEER BEARS NO RESPONSIBILITY FOR THE LOCATION OF UTILITIES SHOWN OR NOT SHOWN ON THE PLANS. THE CONTRACTOR SHALL NOTIFY ALL UTILITY COMPANIES BEFORE STARTING CONSTRUCTION AND IT SHALL BE THE RESPONSIBILITY OF THE CONTRACTOR TO VERIFY THE LOCATION OF ALL UTILITIES WITH THE UTILITY COMPANIES.

CONSTRUCTION NOTES :

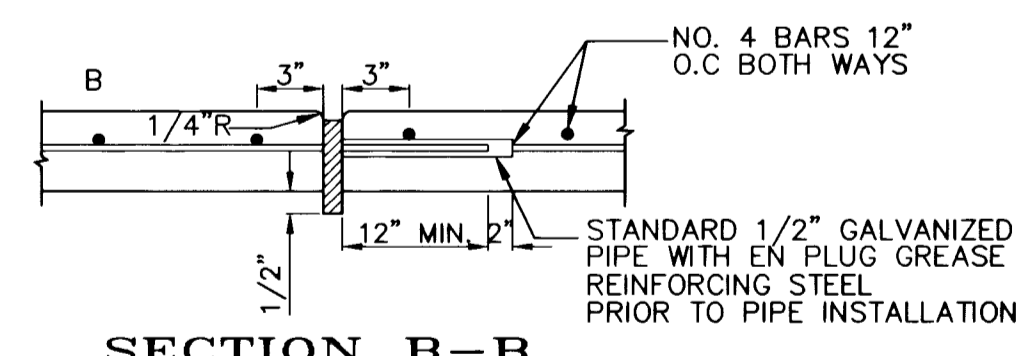
	PRIVATE	PUBLIC
5	CONSTRUCT ALLEY PER CCAS DWG NO. 214 AND SOILS REPORT	2,300 SF.
9	CONSTRUCT I-TYPE CURB & GUTTER PER CCAS DWG NO. 216 (IN PLACE OF REMOVED DRIVEWAYS) ON 12" TYPE II SUBGRADE MINIMUM	55 LF.
10	CONSTRUCT 5' CONCRETE SIDEWALK PER CCAS DWG NO. 234 (IN PLACE OF REMOVED DRIVEWAYS) ON 12" TYPE II SUBGRADE MINIMUM	275 SF.
11	SAWCUT & REMOVE EX. PAVING AND REPAVING	160 SF.
13	CONSTRUCT ALLEY DRIVEWAY PER CCAS DWG NO. 227	310 SF.

LEGEND:

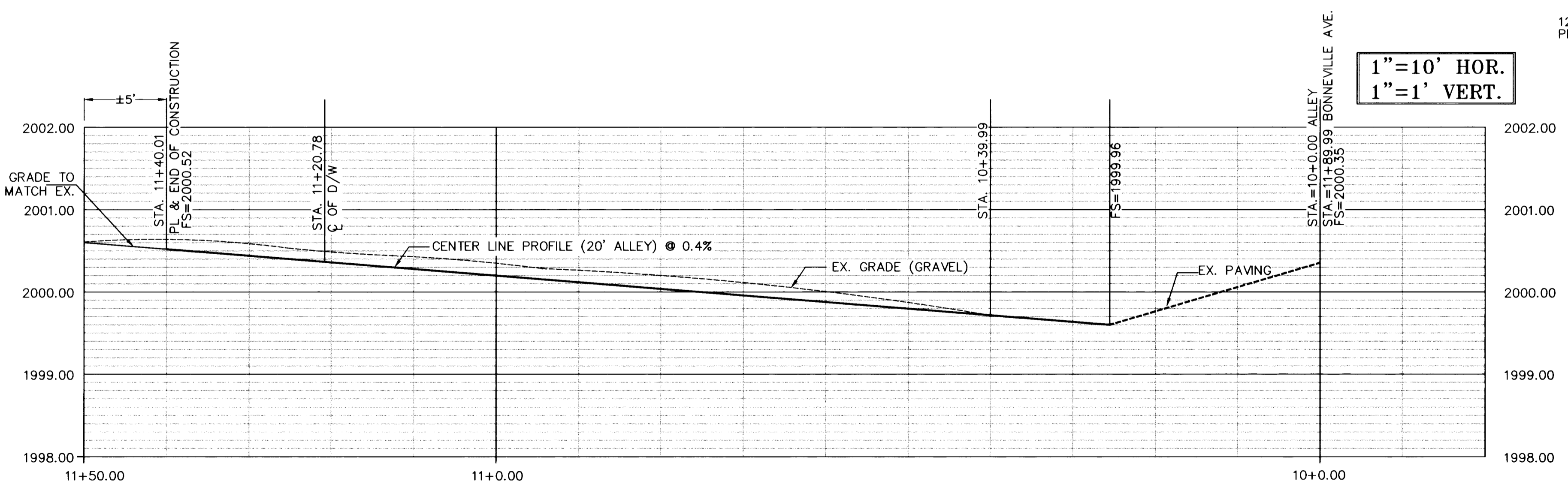
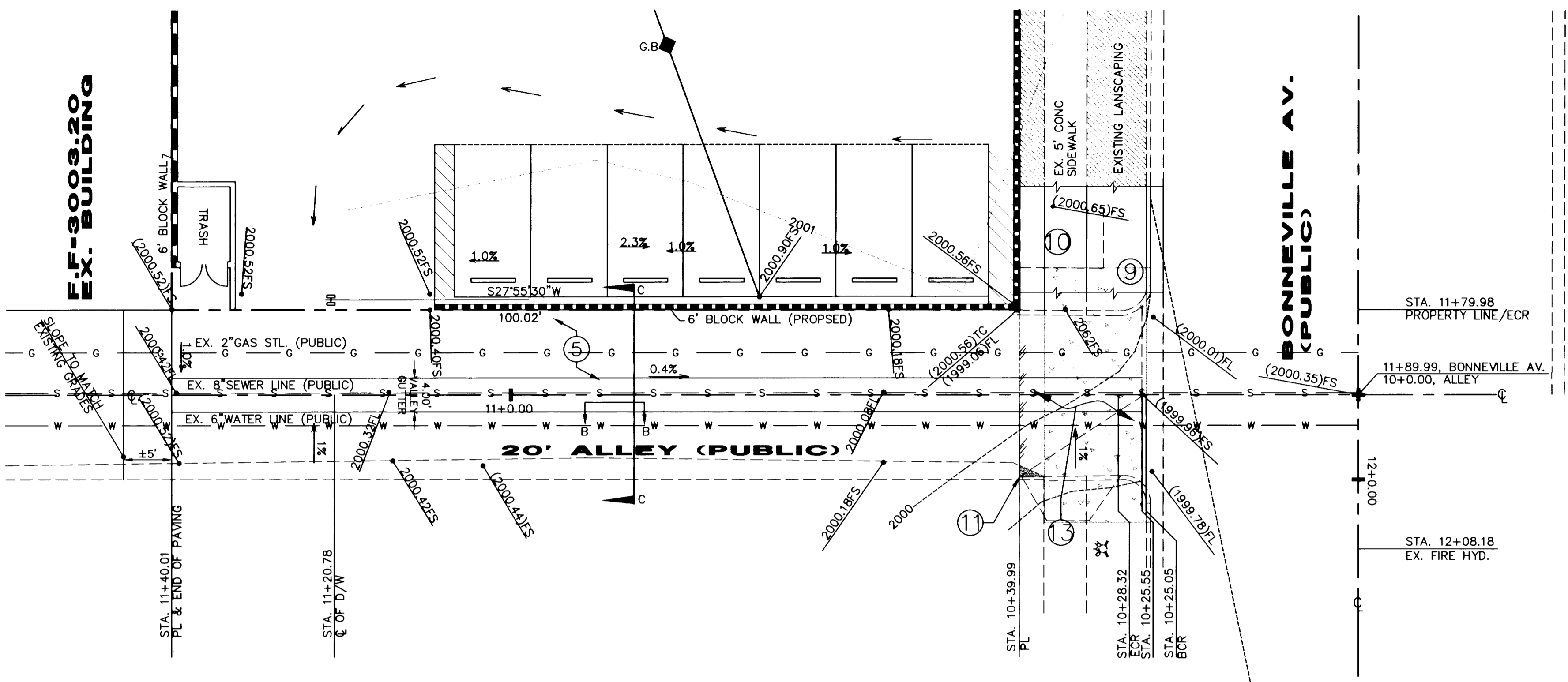
- EX. CONTOURS
- EX. FIRE HYDRANT
- EX. WATER VALVE
- EX. SANITARY SEWER MANHOLE
- EX. STORM DRAIN MANHOLE
- EX. POWER POLE
- EX. GUY WIRE
- PROPERTY LINE
- CENTERLINE
- EX. EDGE OF PAVEMENT
- EX. WELL MONUMENT
- EX. ALUMINUM CAP
- (12.35) IC EXISTING TOP OF CURB ELEVATION
- 12.35 IC PROPOSED TOP OF CURB ELEVATION
- 12.35 FS FINISHED SURFACE ELEVATION
- 12.35 FL FLOW LINE ELEVATION
- F.F. FINISHED FLOOR ELEVATION
- G.B. GRADE BREAK
- 1% FLOW DIRECTION & PERCENT
- TRW TOP OF RETAINING WALL
- GRADE BREAK
- [66.67 EL] PROPOSED GRADES FOR MINI-STORAGE FACILITY
- BASIN DIVIDING LINE
- (M) MEASURED
- (R) RECORDED



SECTION C-C (ALLEY)
 N.T.S.

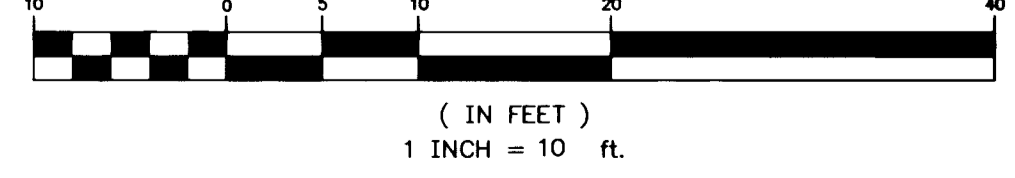


SECTION B-B
 N.T.S.



1" = 10' HOR.
 1" = 1' VERT.

GRAPHIC SCALE



\\nc_1\c\all_dms\98-141\CIVIL\PROFILES-C4.dwg Mon May 03 17:40:00 1999

