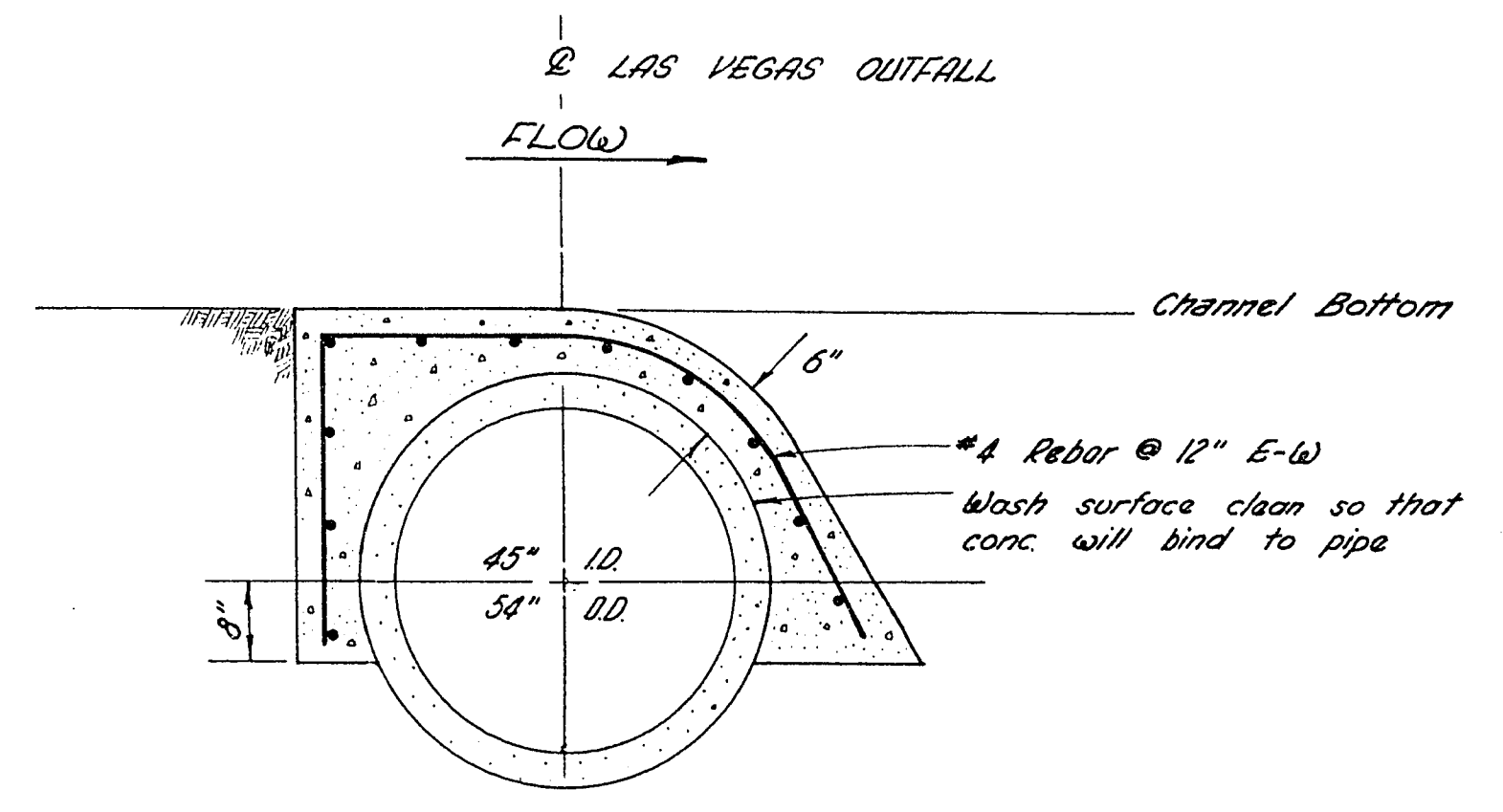
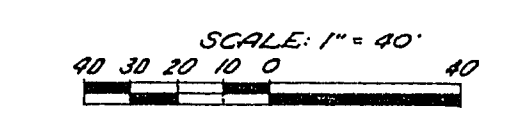
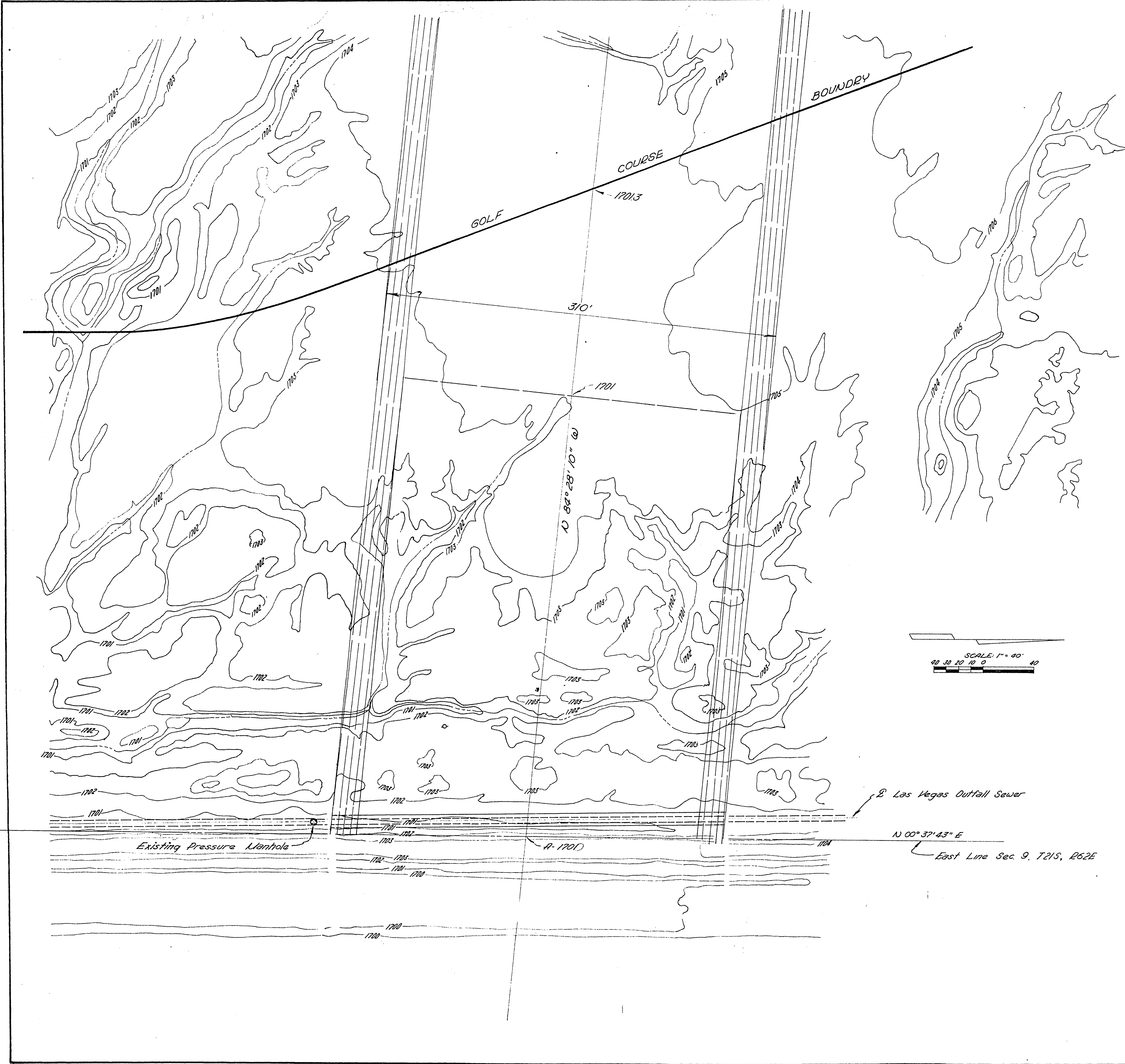


83-5187

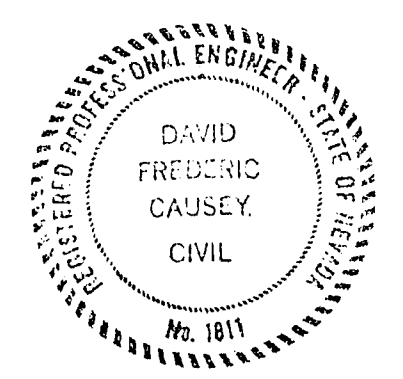


CHANNEL CROSSING DETAIL
TYPICAL SECTION
SCALE: 1/8\"/>

APPROVED: [Signature] 4-24-64
City Engineer, City of Las Vegas Date

APPROVED: [Signature] 4-27-64
County Engineer Date

PRIVATE ENGINEER'S
NOTICE TO CONTRACTOR
THE EXISTENCE AND LOCATION OF ANY UNDERGROUND UTILITIES OR OBSTRUCTIONS SHOWN ON THESE PLANS ARE THE RESPONSIBILITY OF THE CONTRACTOR. THE CONTRACTOR IS TO BE RESPONSIBLE FOR THE LOCATION OF ALL UTILITIES AND OBSTRUCTIONS IN THE FIELD. THE CONTRACTOR IS TO TAKE ALL NECESSARY MEASURES TO PROTECT THE UTILITIES, OBSTRUCTIONS AND ANY OTHER LINES NOT OF RECORD SHOWN ON THESE PLANS.



PLAN OF CHANNEL CROSSING DETAIL
WINTERWOOD GOLF COURSE
GRADING PLAN

CLARK COUNTY NEVADA

WORK ORDER 800-7	PREPARED BY ENGINEERING SERVICE CORPORATION
DESIGNED	ENGINEERS - PLANNERS 1127 WEST WASHINGTON BLVD., LOS ANGELES 15, CALIF. 1402 LAS VEGAS BLVD., SOUTH, LAS VEGAS, NEVADA
CHECKED	D. J. C. 3/25/64 DATE
SHEET 2 OF 4	327-92 APR 28 1964