

# Winterwood Unit

IN THE COUNTY OF CLARK

no 1

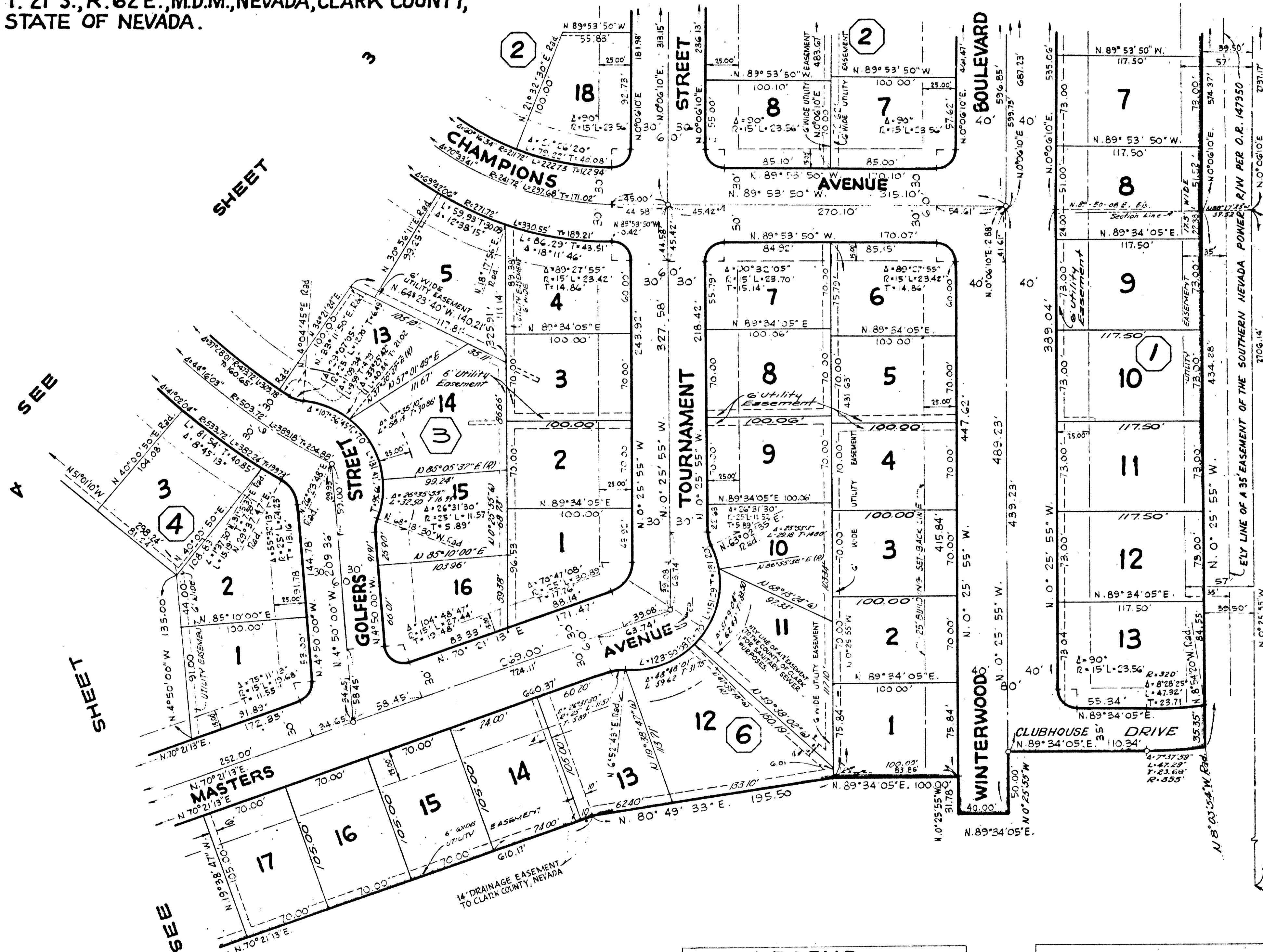
STATE OF NEVADA

PORTION OF THE S.W. 1/4 OF SECTION 4 AND PORTION OF THE N. 1/2 OF SECTION 9, BOTH IN T. 21 S., R. 62 E., M.D.M., NEVADA, CLARK COUNTY, STATE OF NEVADA.

SEE

SHEET

3



RD. CONC. MON. G.L.D. N. 1/4 CORNER, SECTION 9, T. 21 S., R. 62 E., M.D.B.E.M. NEVADA, CLARK COUNTY, NEVADA.

SCALE 1" = 50'

NOTE:  
NO FENCE TO BE CONSTRUCTED ON 17.5' UTILITY EASEMENT WITHOUT PERMISSION FROM SOUTHERN NEVADA POWER COMPANY.

RD. CONC. MON. R.L.S. 1580, CENTER SECTION 9, T. 21 S., R. 62 E., M.D.B.E.M. NEVADA, CLARK COUNTY, NEVADA.

LEGEND	
	Set G Cyl Concrete Monument
	Indicates Monument Found
	Utility Easement G' each side of lot line
	25' Setback Line
	15' Setback Line
	5' x 30' Utility Easement

**BASIS OF BEARING**

The bearing of the west line of the southwest quarter (SW 1/4) of Section 4, Township 21 South, Range 62 east, Mount Diablo Base and Meridian, Clark County Nevada: N. 00° 06' 22" W.

17-16