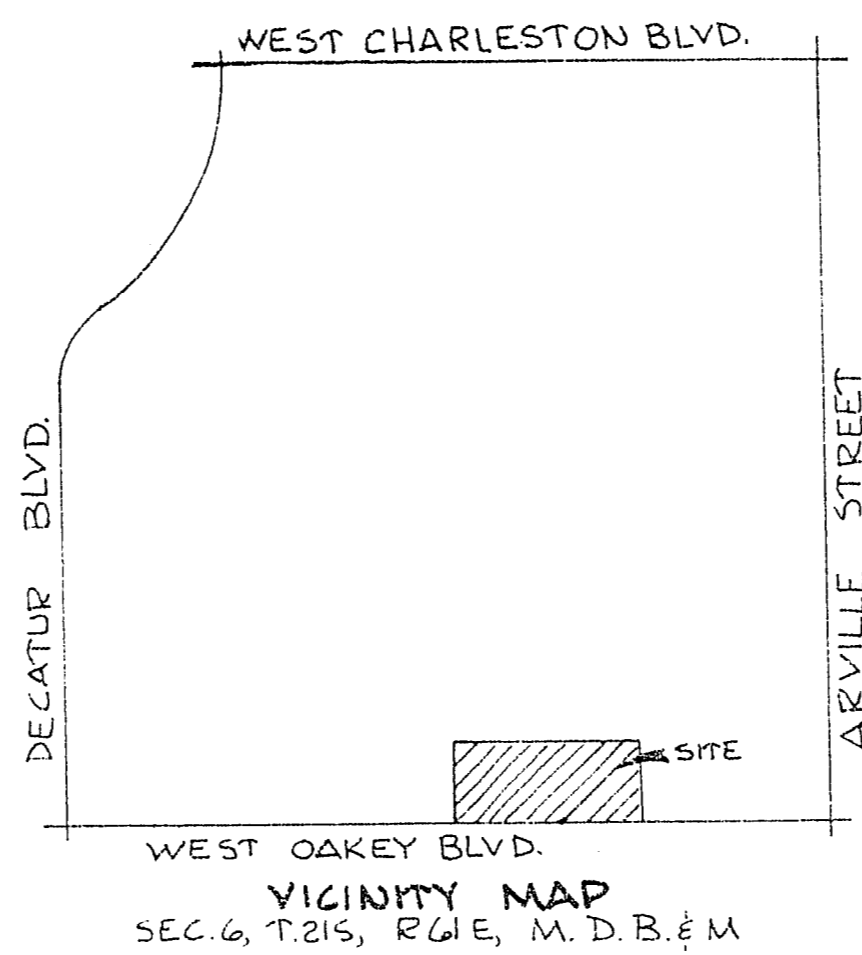
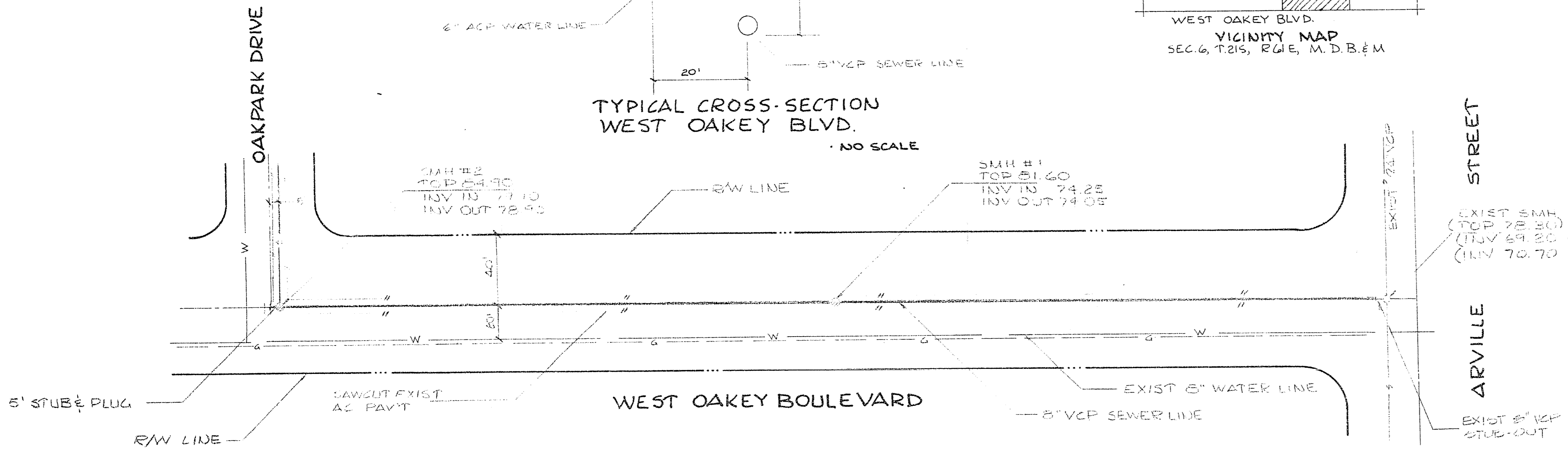


TYPICAL CROSS-SECTION  
WEST OAKLEY BLVD.

NO SCALE



VICINITY MAP  
SEC. 6, T.21S, R.1E, M.D.B. & M.

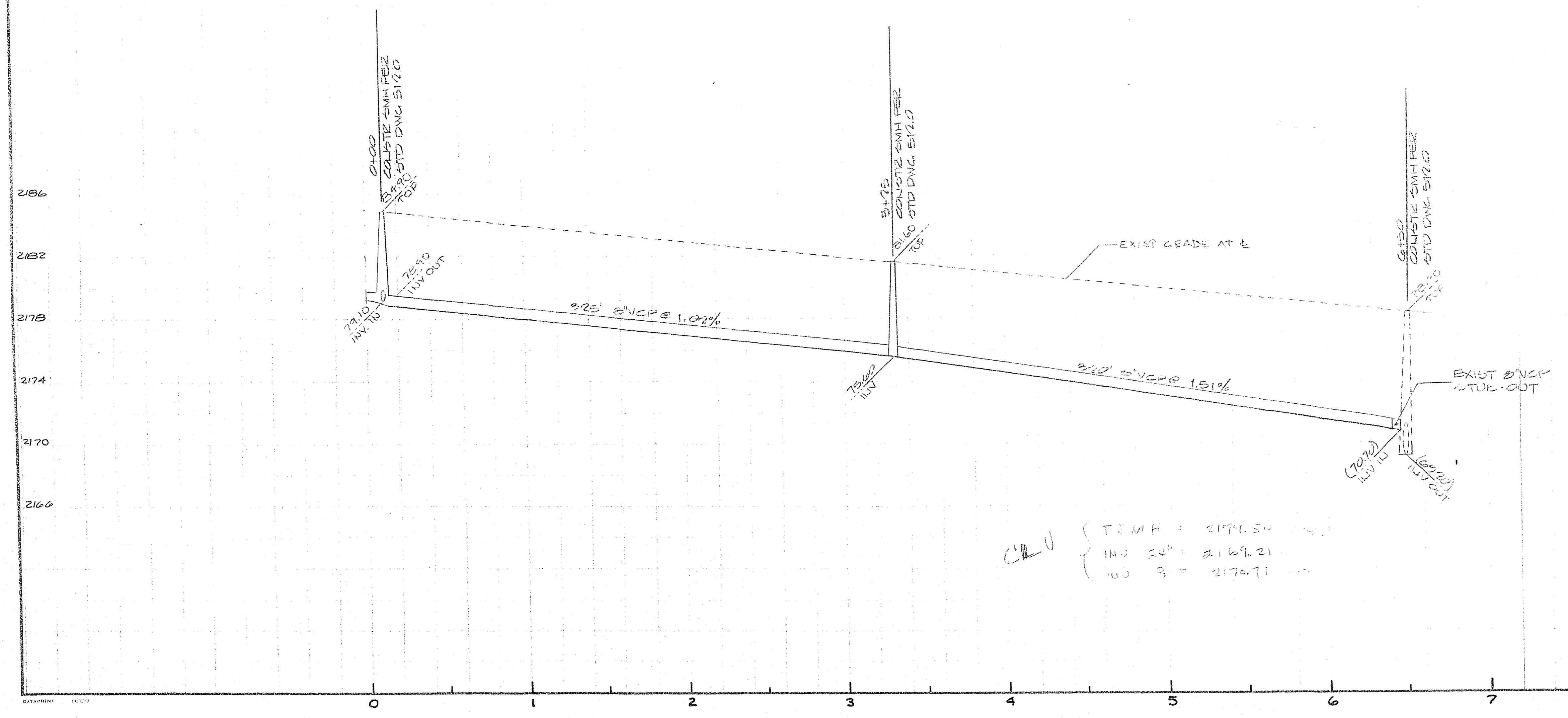


ESTIMATED QUANTITIES

6" VCP SEWER LINE	250 LF
STANDARD MANHOLES	2 EA
STUB & CAP	1 EA

BENCH MARK

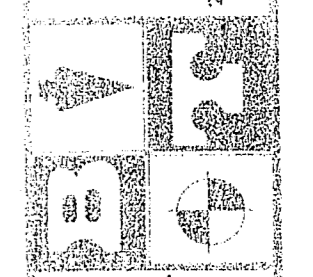
CLV BENCH MARK #161622 - BOLT & PLATE IN TOP OF CURB @ THE SOUTHWEST RETURN CORNER OF OAKLEY BLVD. & BROCKWOOD DR. ELEVATION: 2161.43 C.C.E.D. DATUM



CRU { T.C.M.H. = 2171.54  
IN @ 24" = 2169.21  
WD @ 3" = 2170.71

APPROVALS

<i>[Signature]</i>	1-10-11
CLV SANITATION ENGINEER	DATE
<i>[Signature]</i>	1-9-11
CLV QUALITY CONTROL ENGINEER	DATE
<i>[Signature]</i>	1-9-11
CLV FIELD OPERATIONS ENGINEER	DATE
<i>[Signature]</i>	1/10/11
CLV ENGINEER	DATE



SEWER DESIGN  
WEST OAKLEY BOULEVARD  
SECTION 6, TOWNSHIP 21 SOUTH, RANGE 1 EAST, M.D.B. & M.  
CITY OF LAS VEGAS, NEVADA

PROJ. NO.  
FB121 P3

DELUIS OAKLEY

DATE: OCTOBER 10, 2011  
DESIGN: DTM  
DRAWN: CJB  
CHECK: H. J. JONES  
SCALE: H. 1" = 200' V. 1" = 4'

BAUGHMAN & TURNER  
CIVIL ENGINEERS  
3371 WEST CHARLESTON BOULEVARD  
LAS VEGAS, NEVADA 89102  
302.878.8771