

PRIVATE ENGINEER'S NOTICE TO CONTRACTOR

THE EXISTENCE AND LOCATION OF ANY UNDERGROUND UTILITY LINES OR STRUCTURES SHOWN ON THESE PLANS ARE OBTAINED BY A SEARCH OF THE AVAILABLE RECORDS. TO THE BEST OF OUR KNOWLEDGE THERE ARE NO EXISTING UTILITIES EXCEPT AS SHOWN ON THIS MAP.

THE CONTRACTOR IS REQUIRED TO TAKE PRECAUTIONARY MEASURES TO PROTECT THE UTILITY LINES SHOWN AND ANY OTHER LINES NOT OF RECORD OR NOT SHOWN ON THIS DRAWING.

APPROVALS

CITY OF LAS VEGAS FIRE MARSHAL _____

CITY OF LAS VEGAS ELECTRICAL SUPT. _____ 11-11-78

CITY OF LAS VEGAS ELECTRICAL COORDINATOR _____ 11-11-78

CITY OF LAS VEGAS SANITATION SUPT. _____

CITY OF LAS VEGAS RIBED OPERATIONS ENGINEER _____

CITY OF LAS VEGAS QUANTITY CONTROL ENGINEER _____

CITY OF LAS VEGAS ENGINEER _____ 11/22/78

CLARK COUNTY HEALTH DISTRICT _____ 9/14/78

NEVADA POWER COMPANY _____

LAS VEGAS VALLEY WATER DISTRICT _____ 7-28-78

NOTE: TRACT MAP DATA SHOWN FROM MAP DURING PREPARATION. REFER TO FINAL MAP FOR EXACT DATA AS REVISIONS MAY OCCUR WHICH ARE NOT REFLECTED ON THIS DRAWING.

GENERAL NOTES: All work shall conform to the standard drawings and specifications in effect on the date of the approval of the Tentative Map. No changes shall be made without approval of the Engineer and any applicable governing body. The following notes are supplemental to this general note.

LAS VEGAS VALLEY WATER DISTRICT GENERAL NOTES: 1. All work to conform to Las Vegas Valley Water District standard plates. 2. All work, except as specified herein or by Note No. 1 shall be done in accordance with the most current draft or edition of Uniform Standard Specifications for Public Works Construction Offsite Improvements Clark County Area. 3. Notice to be given Engineering Department of the Las Vegas Valley Water District 48 hours prior to actual construction. 4. Service saddles or tapped collars will be required on all services, double tap collars are not permitted. 5. All lines to be pressure tested to 200 p.s.i. 6. All valve boxes shall have concrete collars at surface of paved areas. 7. Deflection angle shall not exceed 2 degrees per 13 foot section of pipe for pipe sizes less than 14 inches and shall not exceed 2 degrees for pipe sizes between 14" and 18". 8. All manholes shall be located outside of driveways. 9. All manholes shall be tapped in the direction of flow. 10. All manholes shall be located outside of driveways.

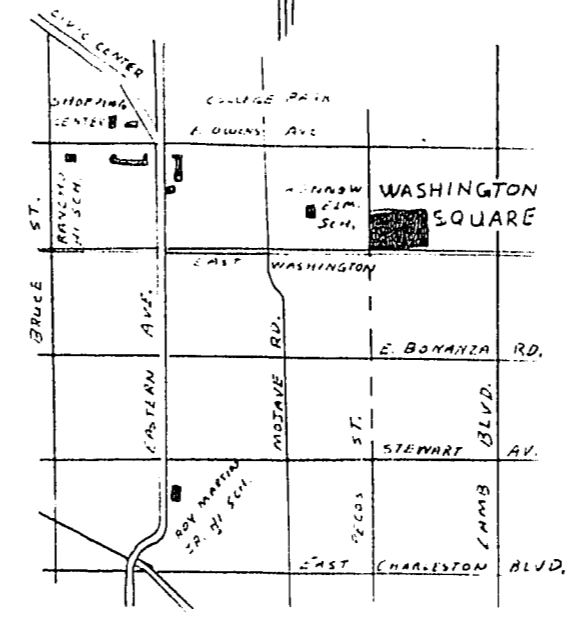
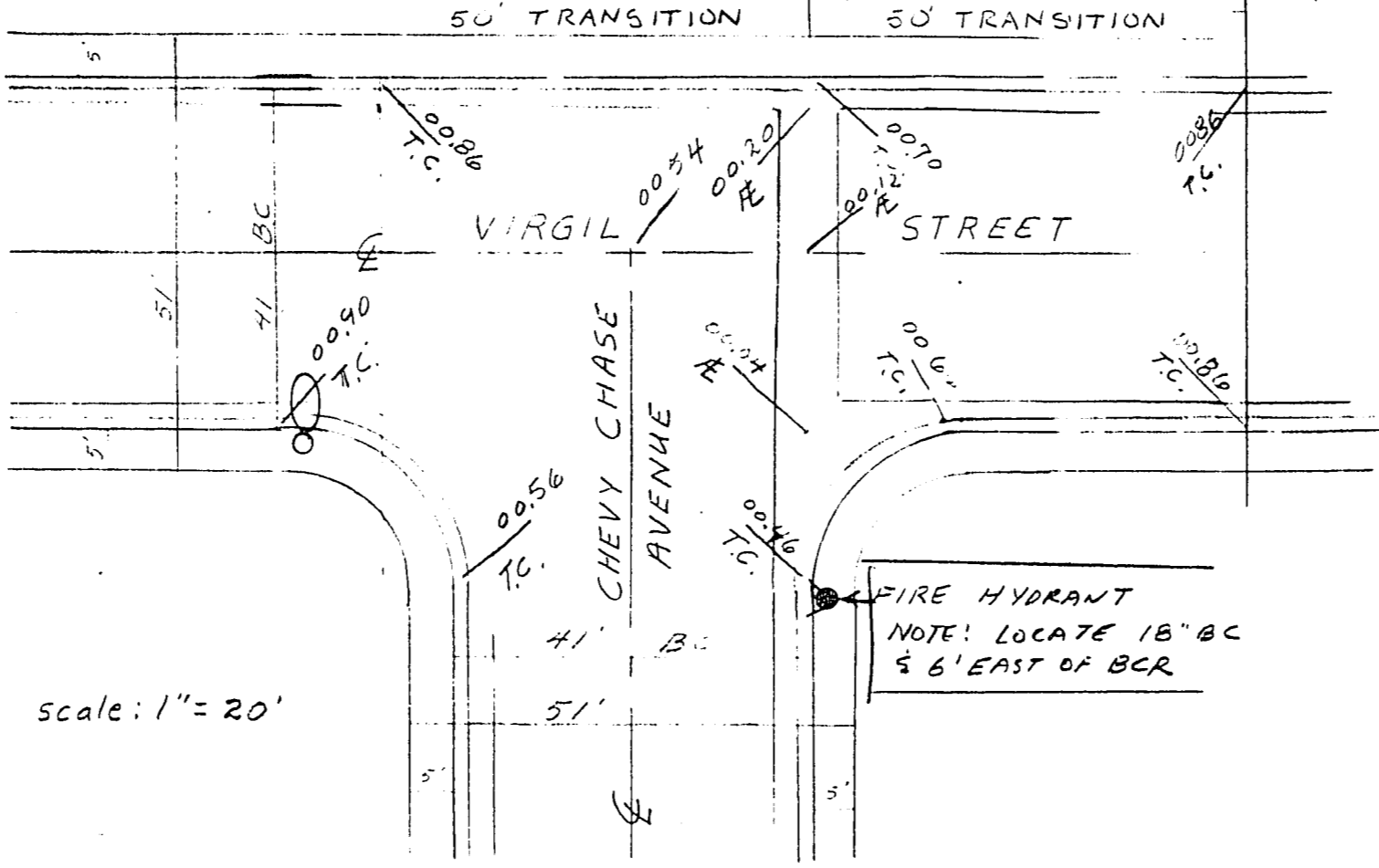
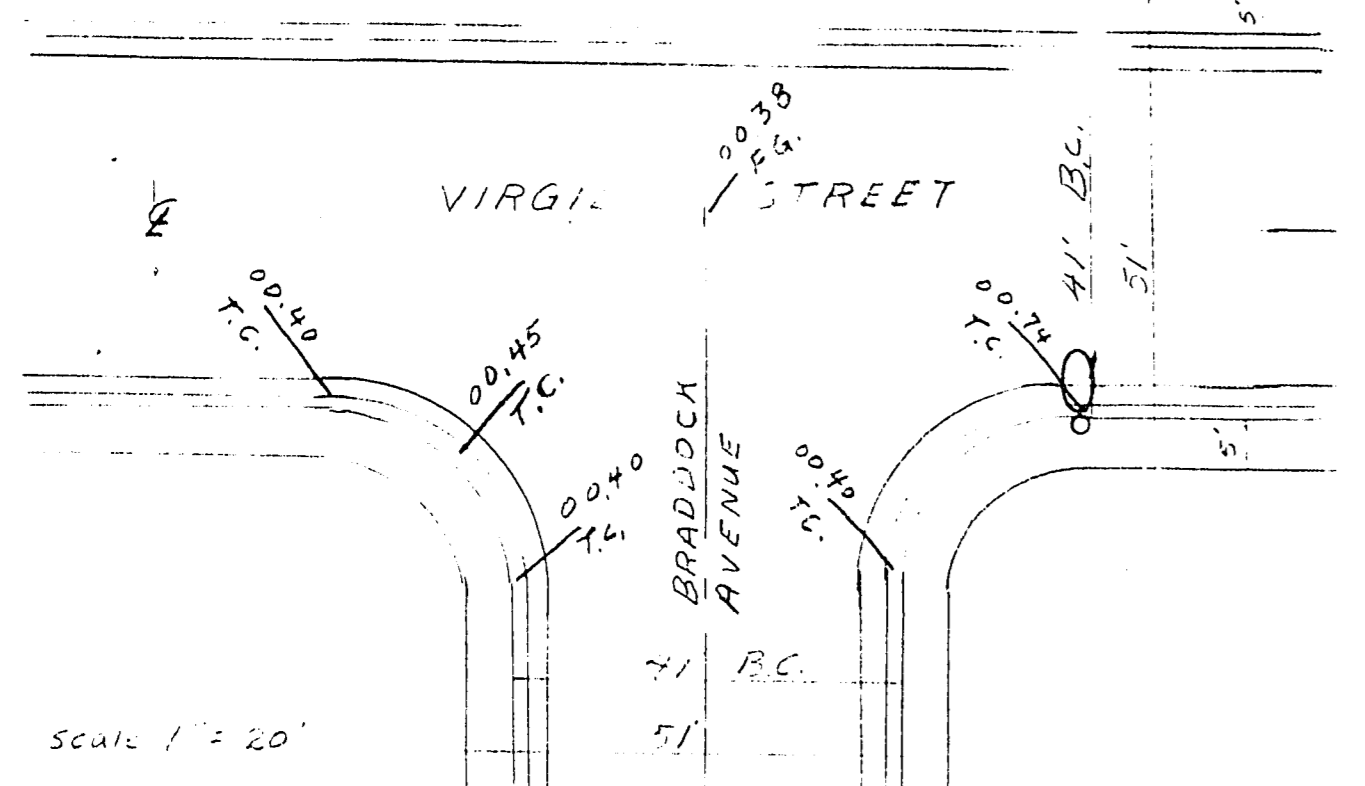
SPECIAL NOTES: All existing facilities shown from available plans and are subject to field verification. Lots on the East side of Virgil Street will be served from existing overhead electric and telephone lines with overhead drops; lots on the West side will be served with new underground service. Type V Cement to be used on all portland cement concrete work. City of Las Vegas Street Light Specifications adopted 5-18-77 to apply.

Special City of Las Vegas Notes: 1. A.C. Pavement to be 1/2" above 1in of all gutters. 2. Expansion joints required maximum every 200 feet in extruded tyne curb. 3. Type V Cement to be used in all offsite concrete. 4. Manholes and water valves to have concrete collars at surface of paved areas.

QUANTITIES

Public Concrete Pavement, 2", with base per City of Las Vegas standards	5,206 Sq. Yds.
Bawcut existing pavement	356 Ln. Ft.
1" type Curb and Gutter, P.C. Concrete	1,373 Ln. Ft.
P.C.C. Sidewalk, 4"	9,782 Sq. Ft.
H.P.S. Vapor Luminaires, 100 w., with standards and bases, City specifications	5 each
Underground conduit, with wiring as required	675 Ln. Ft.
V. C. Pipe sewer laterals, 4"	825 Ln. Ft.
Fire Hydrant Assemblies, complete with aux. valve	1 each
Water services, 3/4", complete, with 5/8" meters	24 each
M.J. TAPPING TEE & VALVE, 8"	2 each
VALLEY GUTTER	226 Sq. Ft.
WIRING FOR ST. LIGHTS TO BE 2-# 4'S	

5'x6' TEE 1 EACH
 8" VALVES 2 EACH
 8" CAPS 2 EACH
 8" CAP WATER 215 L.F.



BENCH MARK (WASHINGTON SQUARE DATUM)
 NEGRA SW 1/4 NW 1/4 SEC 30 TOP BRASS CAP ELEV 1803.33
 CLV BM NO. 06125A6 NW COR LENA & WASHINGTON
 CITY ELEV 1806.05 = 1807.03 THIS DATUM
 EXISTING ELEVATIONS BASED ON WASHINGTON SQUARE #4.

2-9-101 1074-3275-5



SHEET 3 OF 3
 7295-14