

WASHINGTON SQUARE

UNIT 6

MONUMENT THE MAP



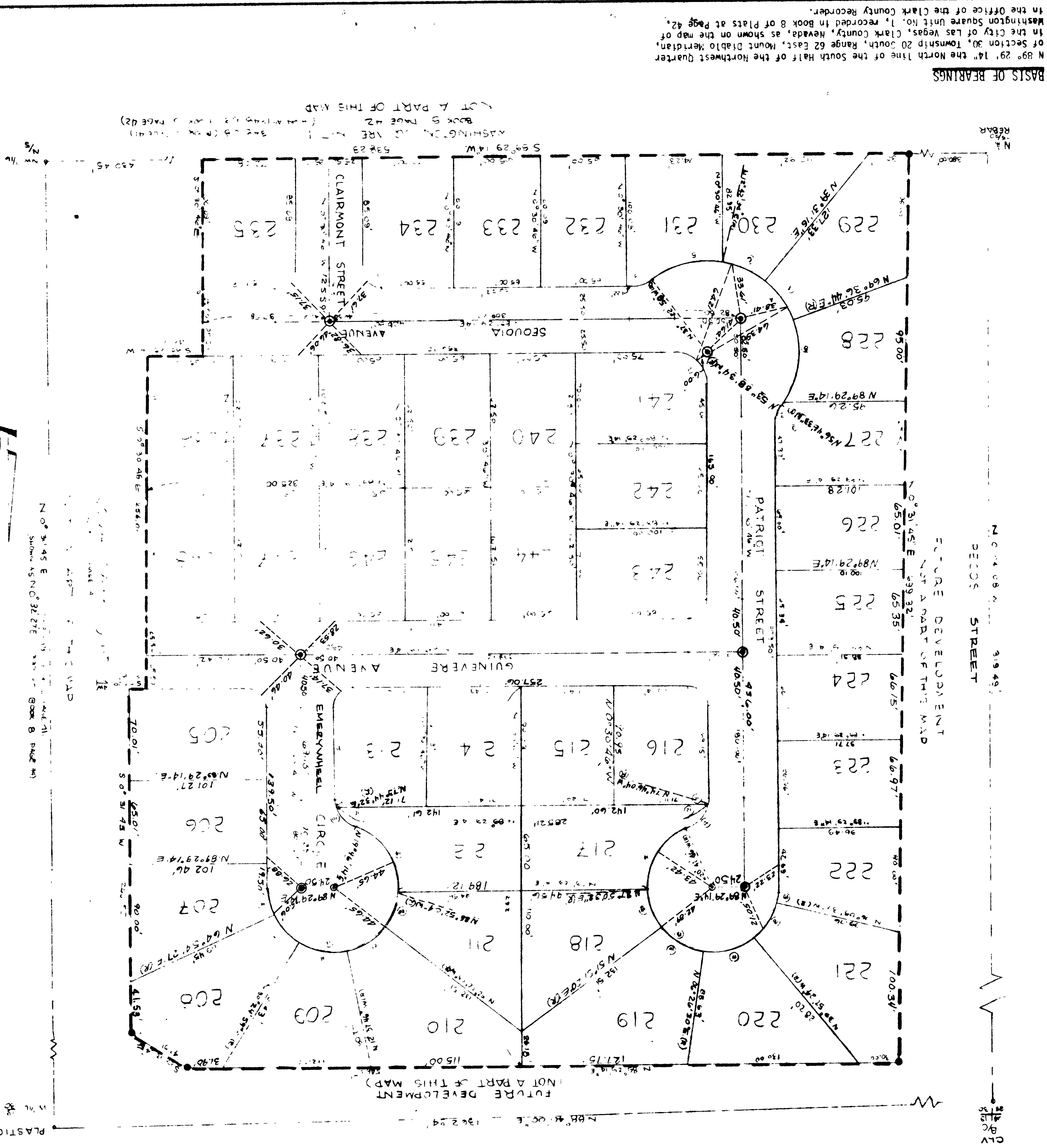
A PORTION OF GOVERNMENT LOT ONE IN THE NORTHWEST QUARTER OF SECTION 30, TOWNSHIP 20 SOUTH, RANGE 62 EAST, MOUNT DIABLO MERIDIAN, IN THE CITY OF LAS VEGAS, CLARK COUNTY, NEVADA.

- LEGEND:
- Monument found per previous surveys noted
 - Monument set
 - Monument set N & S 151811
 - Monument set E/C in cont. LS 1624
 - TRACT BOUNDARY
 - Saw cut at back of curb
 - all lot extensions to curbs, and rebar 151811
 - Set all lot corners adjacent to a street
 - NOTE: Setbacks to conform to City of Las Vegas ordinances. All date of recording R-1 requires: Front yard - 15 feet Side yard - 20 feet Curbs, etc.
 - SET LEAD & TACK IN THE FOR TIES TO MONUMENTS
 - SURVEYOR'S CERTIFICATE
 - THIS HAS BEEN SET AS SHOWN HEREON.

Ray M. Ressler
 Ray M. Ressler
 No. 1624
 Surveyor
 May 19, 1928

CURVE DATA

No.	A	R	L
1	90.00	90.00	15.00
2	90.00	90.00	25.00
3	36.52	12.25	16.08
4	163.44	24.00	200.04
5	50.95	32.70	61.20
6	26.49	41.70	32.75
7	30.05	29.70	36.76
8	53.36	43.70	65.50
9	3.07	59.70	3.83
10	69.43	30.00	30.42
11	15.44	42.25	6.87
12	53.58	18.25	23.55
13	249.43	10.00	217.92
14	71.21	12.50	62.28
15	35.59	12.50	31.40
16	45.24	50.00	39.63
17	46.23	54.00	40.49
18	36.00	13.50	31.54
19	14.25	09.50	12.58
20	35.59	06.50	31.40
21	40.15	12.50	35.13
22	43.02	45.50	37.56
23	34.29	28.50	30.10
24	24.94	47.50	21.45



SCALE 1" = 50'

BASIS OF BEARINGS
 N 89° 29' 14" the North line of the Northwest Quarter of Section 30, Township 20 South, Range 62 East, Mount Diablo Meridian, Clark County, Nevada, as shown on the map of Washington Square Unit No. 1, recorded in Book 8 of Plans at Page 42, in the Office of the Clark County Recorder.

JOB NO. 7295-24
 SHEET 2 OF 2

JOSEY ENGINEERING SERVICE LTD.
 1000 W. WASHINGTON AVENUE
 LAS VEGAS, NEVADA 89102

