

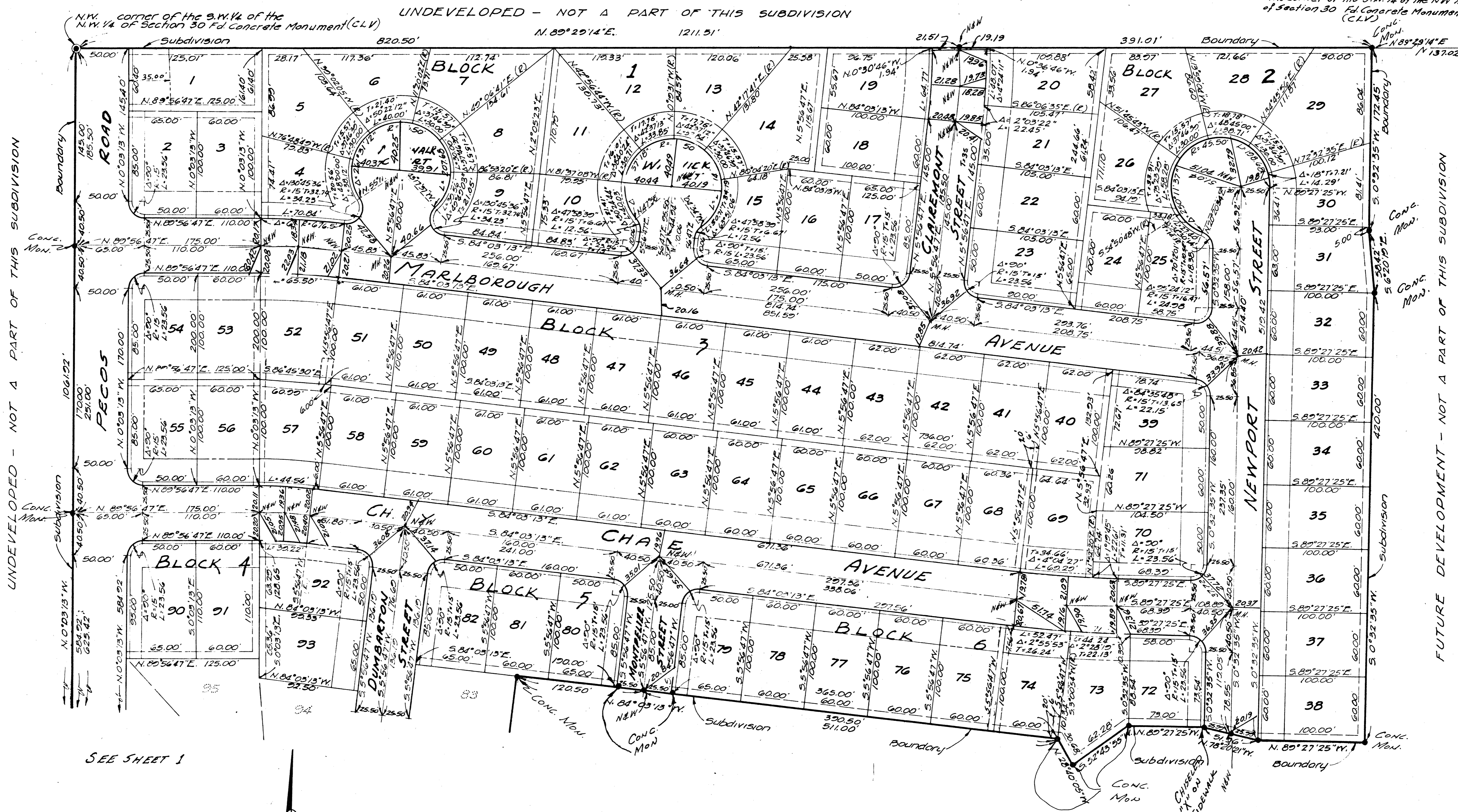
WASHINGTON SQUARE UNIT NO. 1

BEING A PORTION OF THE N.W. 1/4, SEC. 30, T.20S., R.62E., M.D.B.&M.,
CITY OF LAS VEGAS, COUNTY OF CLARK, STATE OF NEVADA

BASIS OF BEARINGS

The bearing N.0°03'13"W. is the West
line of the S.W. 1/4 of Section 30, T.20S.,
R.62E., M.D.B.&M. as recorded in file 5
page 75 of the Engineers Files, Office
of the County Recorder, Clark County, Nevada.

NE corner of the S.W. 1/4 of the NW 1/4
of Section 30. Fed. Concrete Monument
(C.L.V.)



SEE SHEET 1

Scale: 1"=50'

UNDEVELOPED - NOT A PART OF THIS SUBDIVISION

NOTE: ALL TIES ARE TO CHISELED
CROSSES ON CONC. CURBS.
EXCEPT AS NOTED.

NO. 336145
 RECORDED AT THE REQUEST OF
Charles J. Lindberg, Inc.
 Date 1/28/63 at 2:52 P.M.
 BOOK 8 PAGE 42
 OF PLATS
 OFFICIAL RECORDS BOOK NO. 417
 CLARK COUNTY, NEVADA, RECORDS
 PAUL E. HORN, RECORDER
 Fee \$ 26.00 J. R. Deputy

