

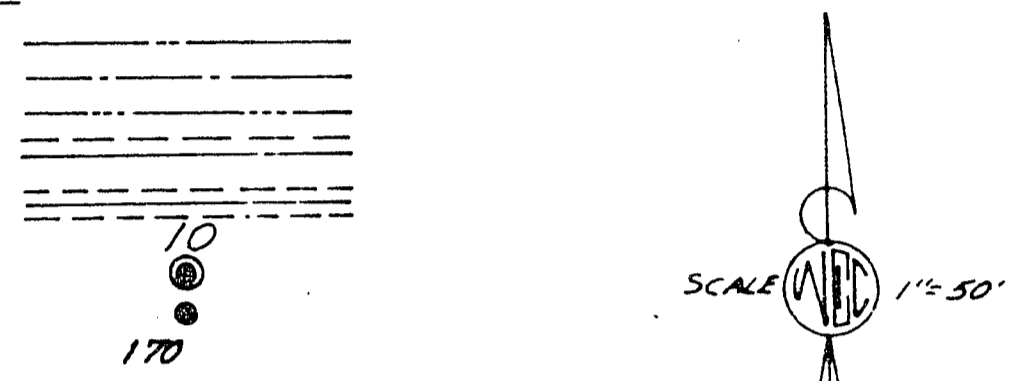
# SHEET 1 OF 1 SHEET

# WASHINGTON SQUARE UNIT NO 3

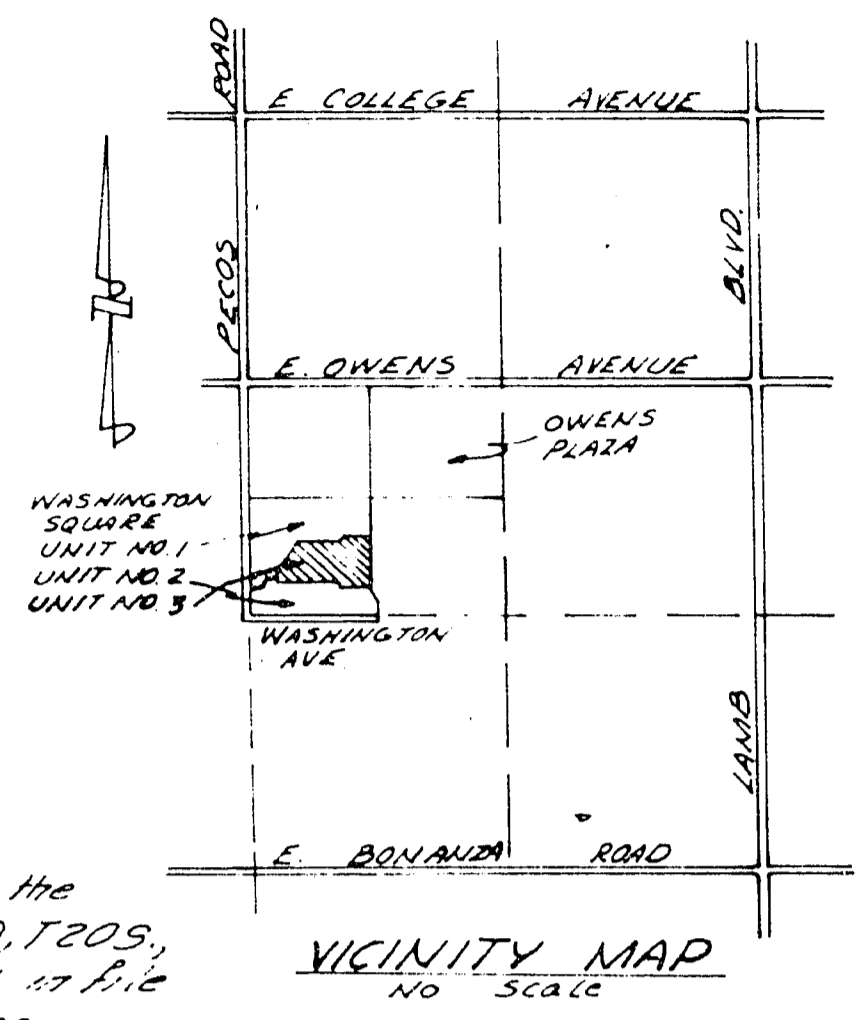
BEING A PORTION OF THE NW 1/4 SEC. 30, T. 20 S., R. 62 E., M.D.B. & M.  
CITY OF LAS VEGAS, COUNTY OF CLARK, STATE OF NEVADA

### LEGEND

- Front Setback Line - 25'
- Side Setback Line - 15'
- 3' Utility Easement
- 6' Utility Easement
- 12' Utility Easement
- Block Number
- Concrete Monument Found
- Concrete Monument Set
- Lot Number



**BASIS OF BEARINGS**  
The bearing N 0° 03' 13" W is the West line of the SW 1/4 of Sec 30, T. 20 S., R. 62 E., M.D.B. & M. as recorded in File 5, Page 75 of the Engineers Files, Office of the County Recorder, Clark County, Nevada



### OWNER'S DEDICATION

Claude T Lindsay Inc., does hereby certify that it is the owner of the parcel of land which is shown upon the plat of "Washington Square Unit No. 3" and does hereby consent to the preparation and recordation of this plat, and does hereby offer and dedicate all the streets, and easements as indicated and outlined hereon, for the use of the public. No part of the parcels marked "Not a part of this subdivision" is offered for dedication. We, Claude T Lindsay Inc., owners of the within platted lands, hereby grant and convey to NEVADA POWER COMPANY & CENTRAL TELEPHONE COMPANY, their successors and assigns, a permanent, easement or right of way, as shown by the areas marked "Utility Easement" on the within plat, for the construction and maintenance of electrical and telephone poles, lines and appurtenances; together with the right of access thereon.

Dated this 30 day of Sept 1963 By Claude T Lindsay Inc. VEE PRES.  
By John J. Davis ASST. SECY.

### ACKNOWLEDGEMENT

State of Nevada  
County of Clark  
On this 30 day of September 1962, personally appeared before me, Carlisle Davison, a Notary Public in and for said County and State, Carlisle Davison, and John J. Davis, known to me to be the Vice President and Asst. Secretary of the Corporation that executed the foregoing instrument, and upon oath, did each depose that he is the officer of said Corporation and that the seal affixed to said instrument is the Corporate seal of said Corporation, that the signatures to said instrument were made by officers of said Corporation as indicated after said signature, and that the said Corporation executed the instrument freely and voluntarily and for the uses and purposes therein mentioned.

Carlisle Davison  
Notary Public in and for said County and State  
My Commission Expires December 1, 1965

### ENGINEER'S CERTIFICATE

I, Norris E Luedtke, a duly registered Professional Engineer and Licensed Land Surveyor, do hereby certify that this plat is a true and accurate map of the land surveyed by me or under my direct supervision at the instance of Claude T Lindsay Inc., and laid out into lots, blocks, streets and easements as shown, that the locations of said lots, blocks, streets and easements are situated wholly within the Northwest Quarter of Section 30, T. 20 S., R. 62 E., M.D.B. & M., City of Las Vegas, County of Clark, State of Nevada, and being more particularly described as follows, to wit: Commencing at the Southeast corner of lot 38, block 2, Washington Square Unit No. 1; also being the true point of beginning, thence S 0° 32' 35" W, a distance of 420.00 feet, thence N 89° 27' 25" W, a distance of 1000.00 feet, thence N 88° 57' 05" W, 51.00 feet, thence N 89° 27' 25" W, 92.00 feet, thence N 0° 32' 35" E, 332.8 feet, thence N 89° 40' 45" W, 663.70 feet, thence N 0° 03' 13" W, 124.03 feet, thence N 32° 56' 47" E, 122.48 feet, thence N 26° 12' 02" E, 74.10 feet, thence N 5° 56' 47" E, 42.00 feet, thence S 84° 03' 13" E, 511.00 feet, thence S 28° 40' 05" E, 30.68 feet, thence N 52° 43' 55" E, 62.28 feet, thence S 89° 27' 25" E, 73.00 feet, thence S 78° 20' 21" E, 51.96 feet, thence S 89° 27' 25" E, 100.00 feet to the true point of beginning, containing 8.107 acres more or less. The survey was completed on 28 day of October, 1962, and is true and complete as show.

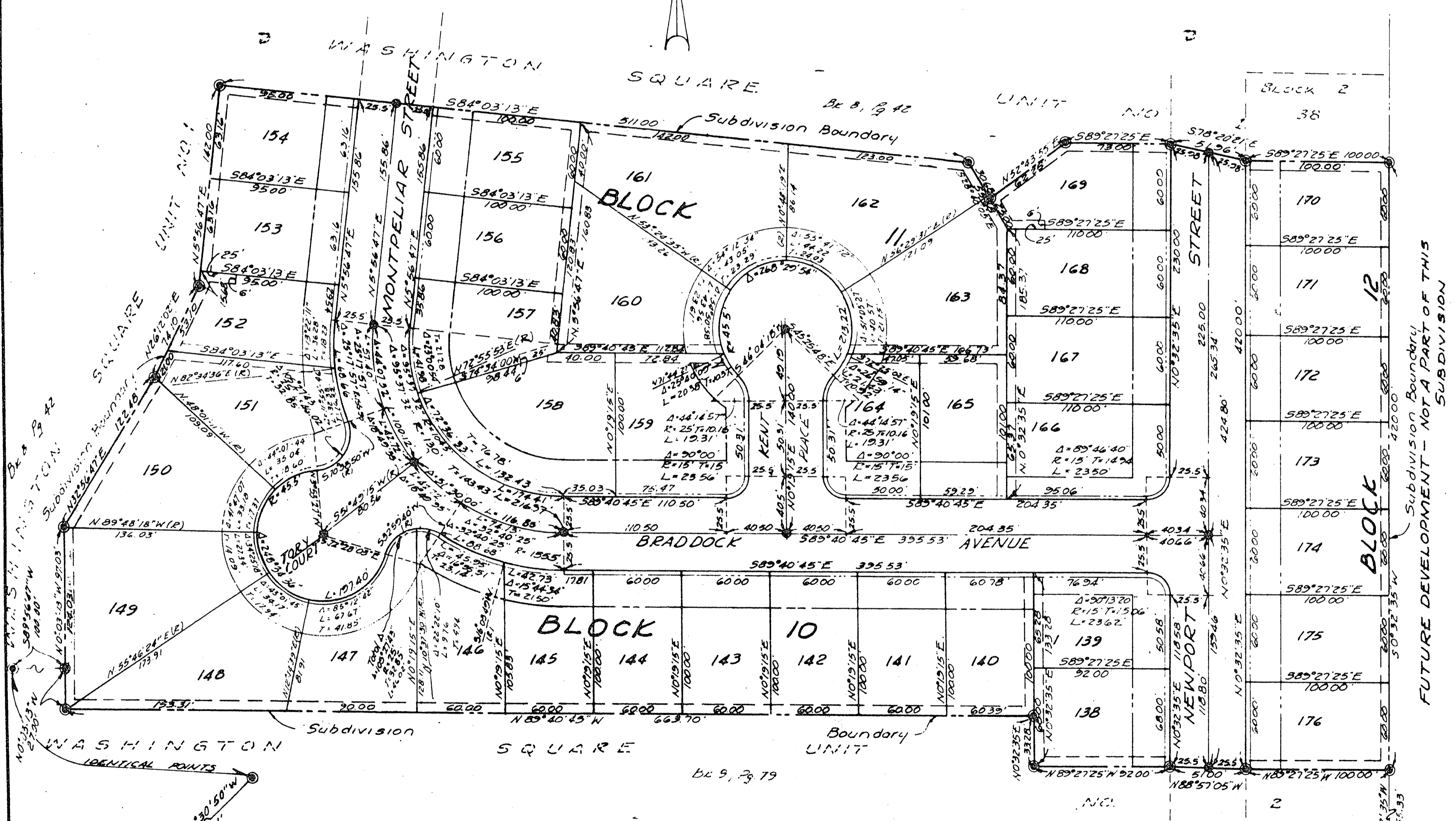
Norris E. Luedtke  
Registered Professional Engineer and Land Surveyor  
Nevada License No. 1712

### CITY ENGINEER'S CERTIFICATE

I, R.P. Sauer, City Engineer of City of Las Vegas, County of Clark, State of Nevada, do hereby certify that I have examined the final map of "Washington Square Unit No. 3", that the subdivision as shown thereon is substantially the same as it appeared on the tentative map, and any approved alterations thereof, that all provisions of the Planning and Zoning Act of the State of Nevada and any local ordinances applicable at the time of approval of the tentative map have been complied with, and that I am satisfied this map is technically correct.

R.P. Sauer Date 12-18-63  
R.P. Sauer, City Engineer, R.P.E. 394

NO. 404394  
RECORDED AT THE REQUEST OF  
Claude T Lindsay, Inc.  
Date 12-18-63 at 10:35 A.M.  
BOOK 9 PAGE 38  
OF PLATS  
OFFICIAL RECORDS BOOK NO. 202  
CLARK COUNTY, NEVADA RECORDS  
PAUL E. HORN, RECORDER  
Fee \$ 10.25 ms Deputy



### APPROVALS

Approved and accepted this 18<sup>th</sup> day of December, 1963, by the Board of Commissioners of the City of Las Vegas, Clark County, State of Nevada.  
Attest John J. Davis Mayor  
Paul E. Horn City Clerk

In conformity with the tentative map, approved this 12 day of December, 1963, by the City Planning Commission of the City of Las Vegas, Clark County, Nevada.  
Don J. Sauer Secretary

