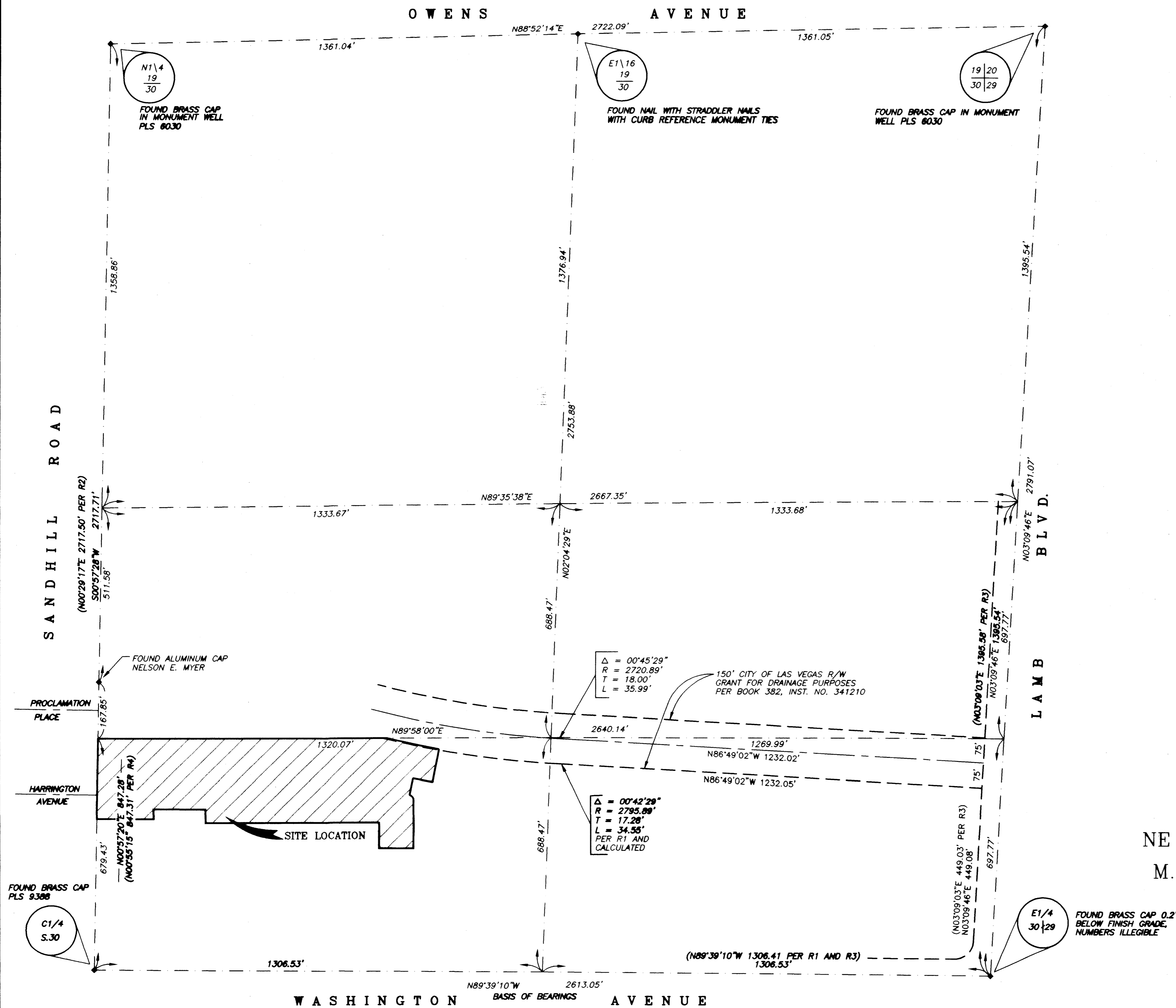


990723

01895

WASHINGTON & SANDHILL - UNIT 3

BEING A PORTION OF THE SOUTH HALF (S1/2) OF THE SOUTHWEST QUARTER (SW1/4)
OF THE NORTHEAST QUARTER (NE1/4) OF SECTION 30, T.20S., R.62E., M.D.M.,
CITY OF LAS VEGAS, CLARK COUNTY, NEVADA



SECTIONAL ANALYSIS
NE 1/4 SECTION 30, T.20S., R.62E.,
M.D.M., CLARK COUNTY, NEVADA

civil engineering • planning • surveying
Orion
3068 East Sunset, Suite 9,
Las Vegas, Nevada 89120
(702) 739-5921 Fax (702) 739-5929
ORION ENGINEERING AND SURVEYING, INC.
SHEET 3 OF 4
4556-3 C:\PROJECTS\0208001\WS3FMS3

Book 90 Page 64

