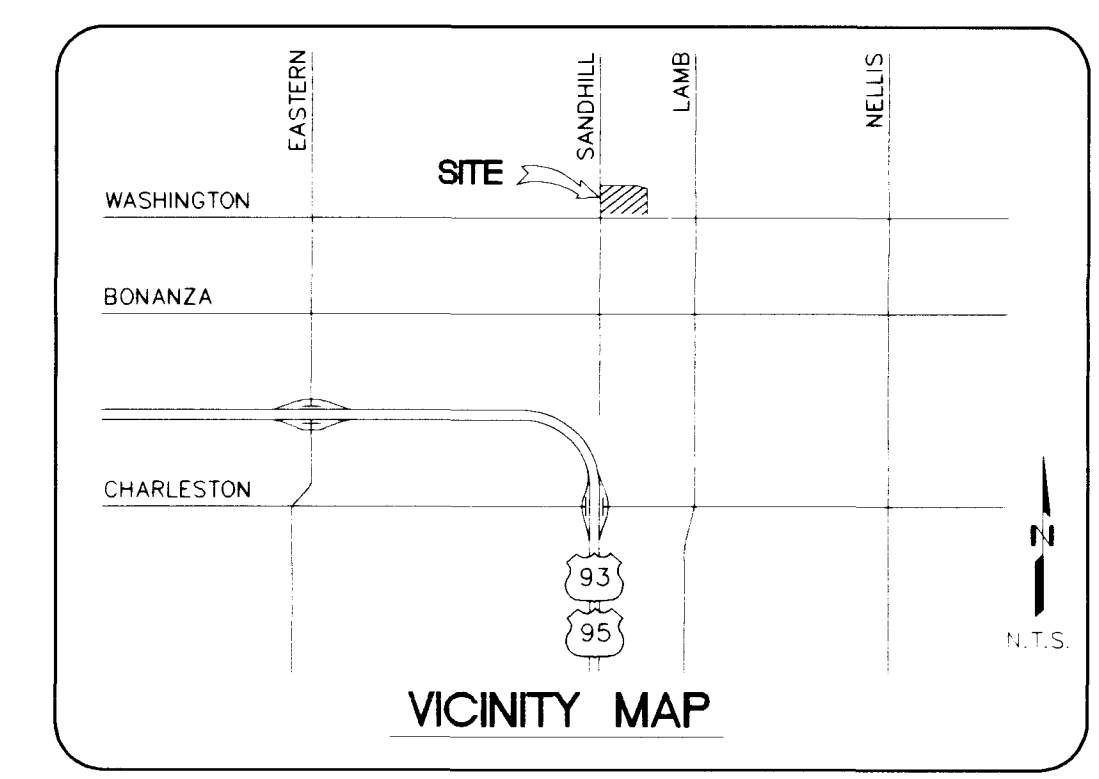
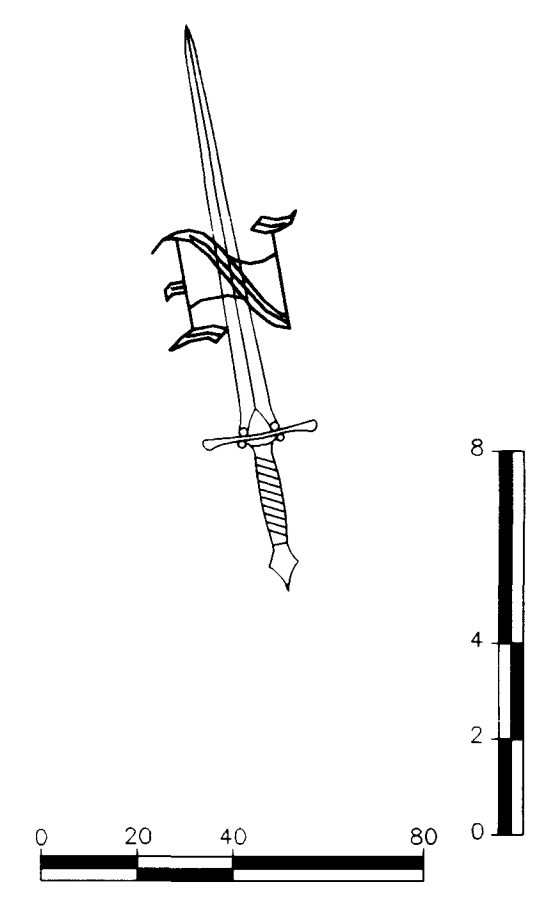


MATCH LINE - 10+50  
SEE SHEET 10



- LEGEND**
- 75 LOT NUMBER
  - (98.5) PAD ELEVATION
  - - - - - EXISTING CONTOUR
  - - - - - CITY OF LAS VEGAS RIGHT OF WAY FOR DRAINAGE PURPOSES
  - - - - - HYDRAULIC GRADE LINE

**DISCLAIMER NOTE**

UTILITY LOCATIONS SHOWN HEREON ARE APPROXIMATE ONLY. IT SHALL BE THE CONTRACTOR'S RESPONSIBILITY TO DETERMINE THE EXACT HORIZONTAL AND VERTICAL LOCATION OF ALL EXISTING UNDERGROUND OR OVERHEAD UTILITIES PRIOR TO COMMENCING CONSTRUCTION. NO REPRESENTATION IS MADE THAT ALL EXISTING UTILITIES ARE SHOWN HEREON. THE ENGINEER ASSUMES NO RESPONSIBILITY FOR UTILITIES NOT SHOWN OR UTILITIES NOT SHOWN IN THEIR PROPER LOCATION.

Avoid cutting underground utility lines. If a conflict exists, call before you dig. 1-800-227-2600 UNDERGROUND SERVICE (USA)

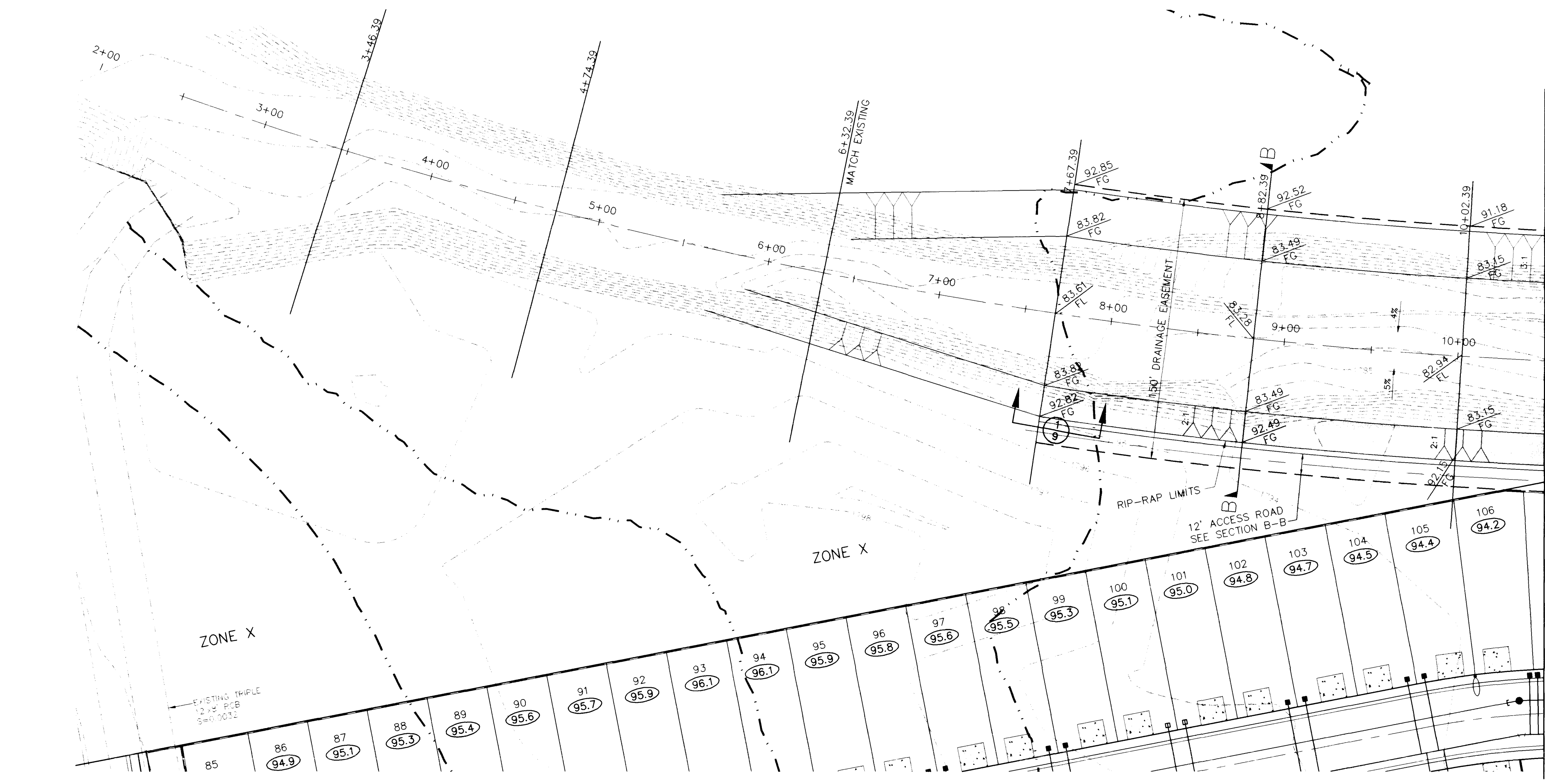
Avoid overhead power line contact. Call before you Overhead. 1-702-593-6111 NEVADA POWER ENVIRONMENT AND SAFETY SERVICES (NPESS)

**BENCHMARK** (N.A.V.D. 88)

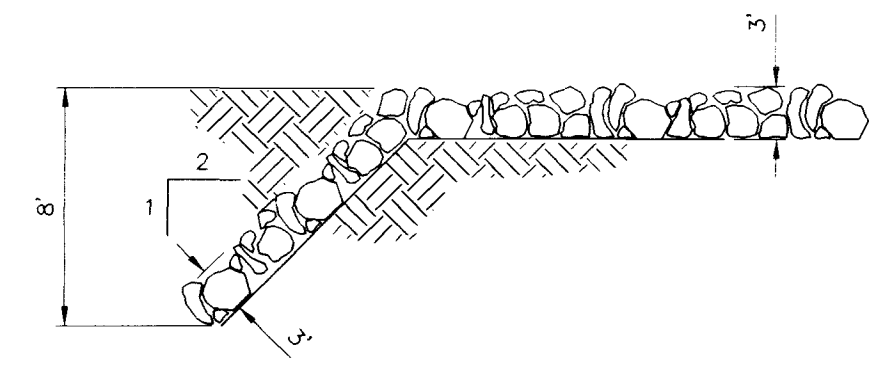
B.M. NO. 16 STATION: 0020 2105WS  
FOUND RIVET AND SQUARE ALUMINUM PLATE IN TOP OF CURB, N NORTHEAST CORNER OF OWENS AVENUE AND LAMB BOULEVARD, NEAR THE PC OF OWENS AVENUE  
ELEVATION = 1792.13 (546.2440m) (NAVD88 DATUM)

**DRAINAGE STUDY NOTE**

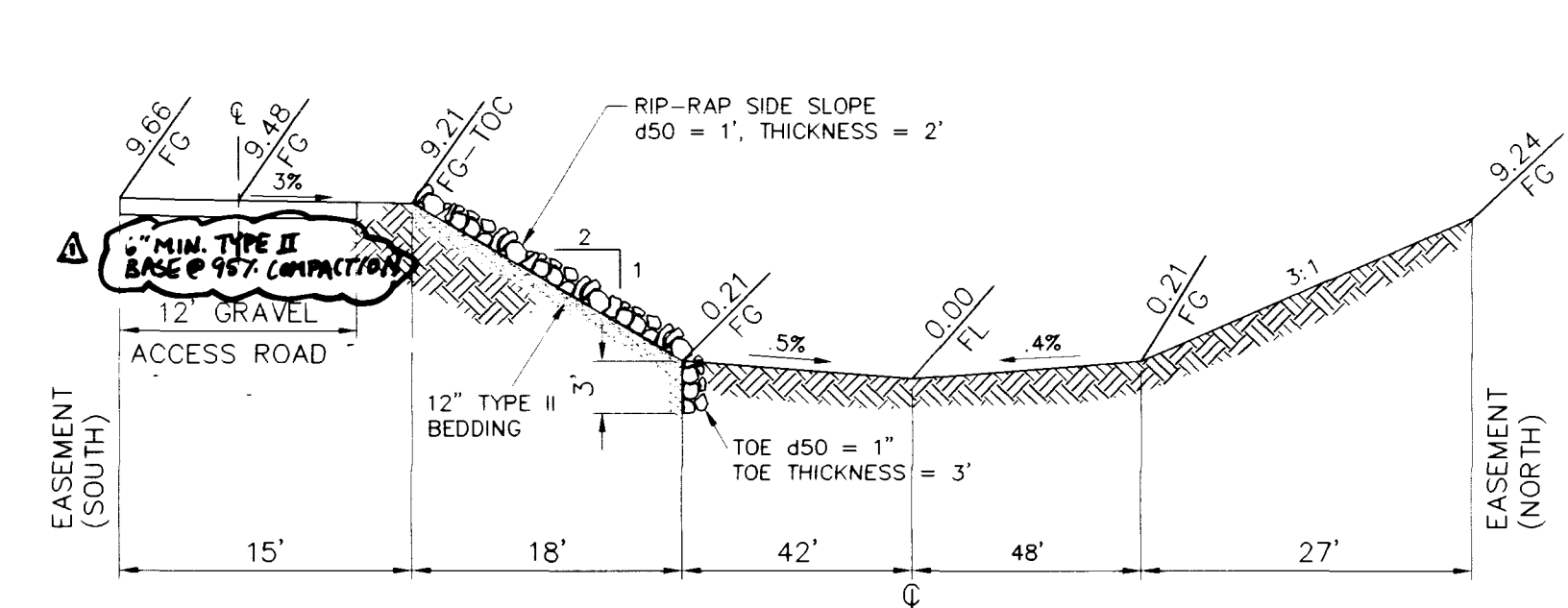
I CERTIFY THAT THIS GRADING PLAN IS IN CONFORMANCE WITH THE APPROVED DRAINAGE STUDY ON FILE AT THE CITY OF LAS VEGAS FOR THIS PROJECT.



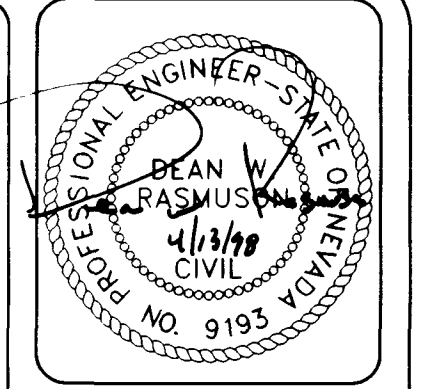
MATCH LINE - 10+50  
SEE SHEET 10



CUT-OFF DETAIL  
NOT TO SCALE



TYPICAL CHANNEL SECTION B-B  
NOT TO SCALE

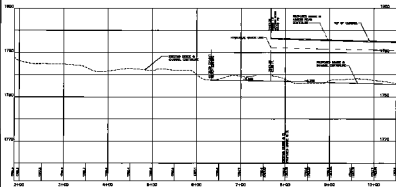


|              |                      |
|--------------|----------------------|
| DESIGNED BY: | DATE:                |
| CHECKED BY:  | JOB NUMBER: 020-6001 |
| NO.:         | REVISION:            |
| BY:          | DATE:                |
| NO.:         | DATE:                |

**CHANNEL PLANS**  
**WASHINGTON & SANDHILL**  
**UNIT 1**  
**REX & FRAN CALLAWAY FAMILY TRUST**  
NEVADA  
CITY OF LAS VEGAS

**ORION ENGINEERING AND SURVEYING, INC.**  
2700 CHANDLER AVENUE, SUITE B-1  
LAS VEGAS, NEVADA, 89120  
(702) 739-5921 FAX (702) 739-5929

SHEET 8  
of 9



- LEGEND**
- PROPOSED ROAD GRADE
  - EXISTING ROAD GRADE
  - DRAINAGE CANAL
  - DRAINAGE DITCH
  - FENCE LINE

**DECLARED SITE**

|        |        |
|--------|--------|
| NO. 1  | NO. 2  |
| NO. 3  | NO. 4  |
| NO. 5  | NO. 6  |
| NO. 7  | NO. 8  |
| NO. 9  | NO. 10 |
| NO. 11 | NO. 12 |
| NO. 13 | NO. 14 |
| NO. 15 | NO. 16 |
| NO. 17 | NO. 18 |
| NO. 19 | NO. 20 |
| NO. 21 | NO. 22 |
| NO. 23 | NO. 24 |
| NO. 25 | NO. 26 |
| NO. 27 | NO. 28 |
| NO. 29 | NO. 30 |
| NO. 31 | NO. 32 |
| NO. 33 | NO. 34 |
| NO. 35 | NO. 36 |
| NO. 37 | NO. 38 |
| NO. 39 | NO. 40 |
| NO. 41 | NO. 42 |
| NO. 43 | NO. 44 |
| NO. 45 | NO. 46 |
| NO. 47 | NO. 48 |
| NO. 49 | NO. 50 |

**REVISIONS**

|        |        |
|--------|--------|
| NO. 1  | NO. 2  |
| NO. 3  | NO. 4  |
| NO. 5  | NO. 6  |
| NO. 7  | NO. 8  |
| NO. 9  | NO. 10 |
| NO. 11 | NO. 12 |
| NO. 13 | NO. 14 |
| NO. 15 | NO. 16 |
| NO. 17 | NO. 18 |
| NO. 19 | NO. 20 |
| NO. 21 | NO. 22 |
| NO. 23 | NO. 24 |
| NO. 25 | NO. 26 |
| NO. 27 | NO. 28 |
| NO. 29 | NO. 30 |
| NO. 31 | NO. 32 |
| NO. 33 | NO. 34 |
| NO. 35 | NO. 36 |
| NO. 37 | NO. 38 |
| NO. 39 | NO. 40 |
| NO. 41 | NO. 42 |
| NO. 43 | NO. 44 |
| NO. 45 | NO. 46 |
| NO. 47 | NO. 48 |
| NO. 49 | NO. 50 |

**REVISIONS**

22

NO. 1

NO. 2

NO. 3

NO. 4

NO. 5

NO. 6

NO. 7

NO. 8

NO. 9

NO. 10

NO. 11

NO. 12

NO. 13

NO. 14

NO. 15

NO. 16

NO. 17

NO. 18

NO. 19

NO. 20

NO. 21

NO. 22

NO. 23

NO. 24

NO. 25

NO. 26

NO. 27

NO. 28

NO. 29

NO. 30

NO. 31

NO. 32

NO. 33

NO. 34

NO. 35

NO. 36

NO. 37

NO. 38

NO. 39

NO. 40

NO. 41

NO. 42

NO. 43

NO. 44

NO. 45

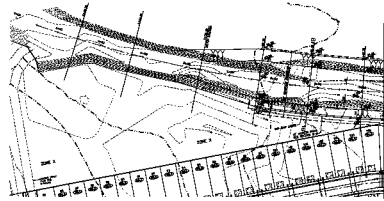
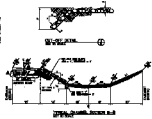
NO. 46

NO. 47

NO. 48

NO. 49

NO. 50



NO. 1

NO. 2

NO. 3

NO. 4

NO. 5

NO. 6

NO. 7

NO. 8

NO. 9

NO. 10

NO. 11

NO. 12

NO. 13

NO. 14

NO. 15

NO. 16

NO. 17

NO. 18

NO. 19

NO. 20

NO. 21

NO. 22

NO. 23

NO. 24

NO. 25

NO. 26

NO. 27

NO. 28

NO. 29

NO. 30

NO. 31

NO. 32

NO. 33

NO. 34

NO. 35

NO. 36

NO. 37

NO. 38

NO. 39

NO. 40

NO. 41

NO. 42

NO. 43

NO. 44

NO. 45

NO. 46

NO. 47

NO. 48

NO. 49

NO. 50

**CHANNEL PLAN**

**INSPECTION & SURVEIL**

**NO. 1**

**NO. 2**

**NO. 3**

**NO. 4**

**NO. 5**

**NO. 6**

**NO. 7**

**NO. 8**

**NO. 9**

**NO. 10**

**NO. 11**

**NO. 12**

**NO. 13**

**NO. 14**

**NO. 15**

**NO. 16**

**NO. 17**

**NO. 18**

**NO. 19**

**NO. 20**

**NO. 21**

**NO. 22**

**NO. 23**

**NO. 24**

**NO. 25**

**NO. 26**

**NO. 27**

**NO. 28**

**NO. 29**

**NO. 30**

**NO. 31**

**NO. 32**

**NO. 33**

**NO. 34**

**NO. 35**

**NO. 36**

**NO. 37**

**NO. 38**

**NO. 39**

**NO. 40**

**NO. 41**

**NO. 42**

**NO. 43**

**NO. 44**

**NO. 45**

**NO. 46**

**NO. 47**

**NO. 48**

**NO. 49**

**NO. 50**

**OTHER INFORMATION AND ADVISORY**

**NO. 1**

**NO. 2**

**NO. 3**

**NO. 4**

**NO. 5**

**NO. 6**

**NO. 7**

**NO. 8**

**NO. 9**

**NO. 10**

**NO. 11**

**NO. 12**

**NO. 13**

**NO. 14**

**NO. 15**

**NO. 16**

**NO. 17**

**NO. 18**

**NO. 19**

**NO. 20**

**NO. 21**

**NO. 22**

**NO. 23**

**NO. 24**

**NO. 25**

**NO. 26**

**NO. 27**

**NO. 28**

**NO. 29**

**NO. 30**

**NO. 31**

**NO. 32**

**NO. 33**

**NO. 34**

**NO. 35**

**NO. 36**

**NO. 37**

**NO. 38**

**NO. 39**

**NO. 40**

**NO. 41**

**NO. 42**

**NO. 43**

**NO. 44**

**NO. 45**

**NO. 46**

**NO. 47**

**NO. 48**

**NO. 49**

**NO. 50**