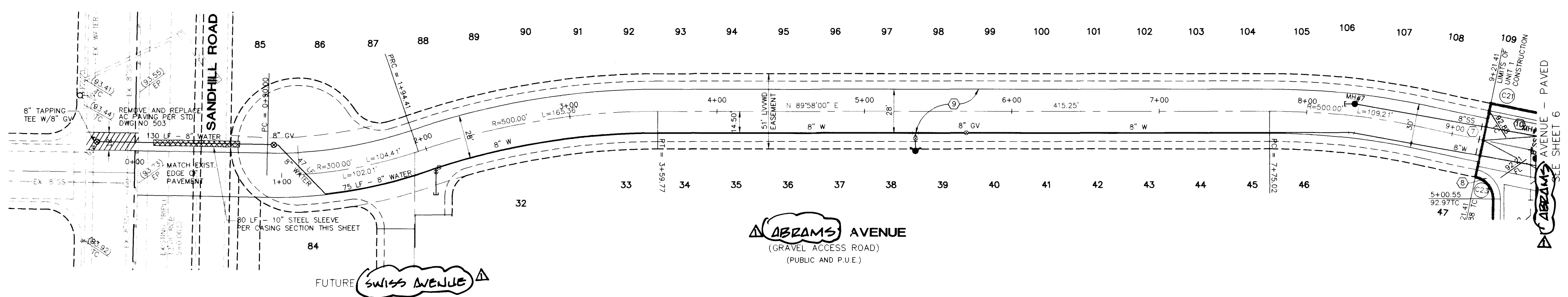
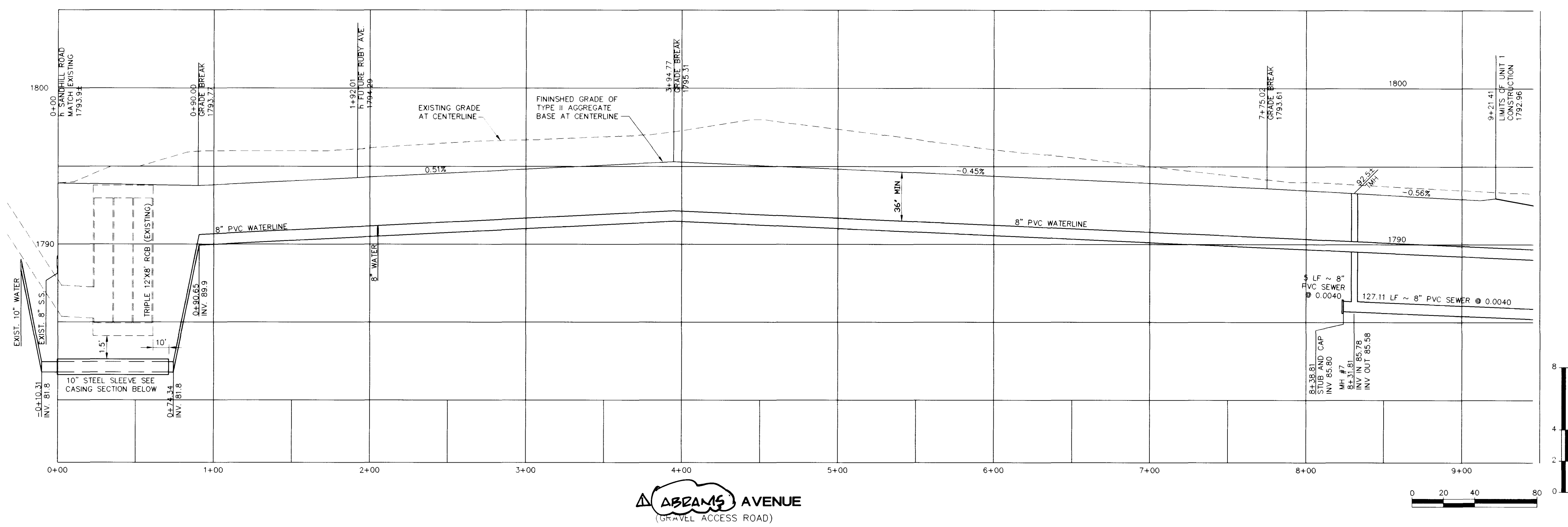


DESIGNED BY: [] DATE: []
 CHECKED BY: [] LOG NUMBER: 020-6001
 NO. [] REGION: [] BY: [] DATE: []
 REVISE STREET NAMES PER FINAL MAP AS 5/17/19



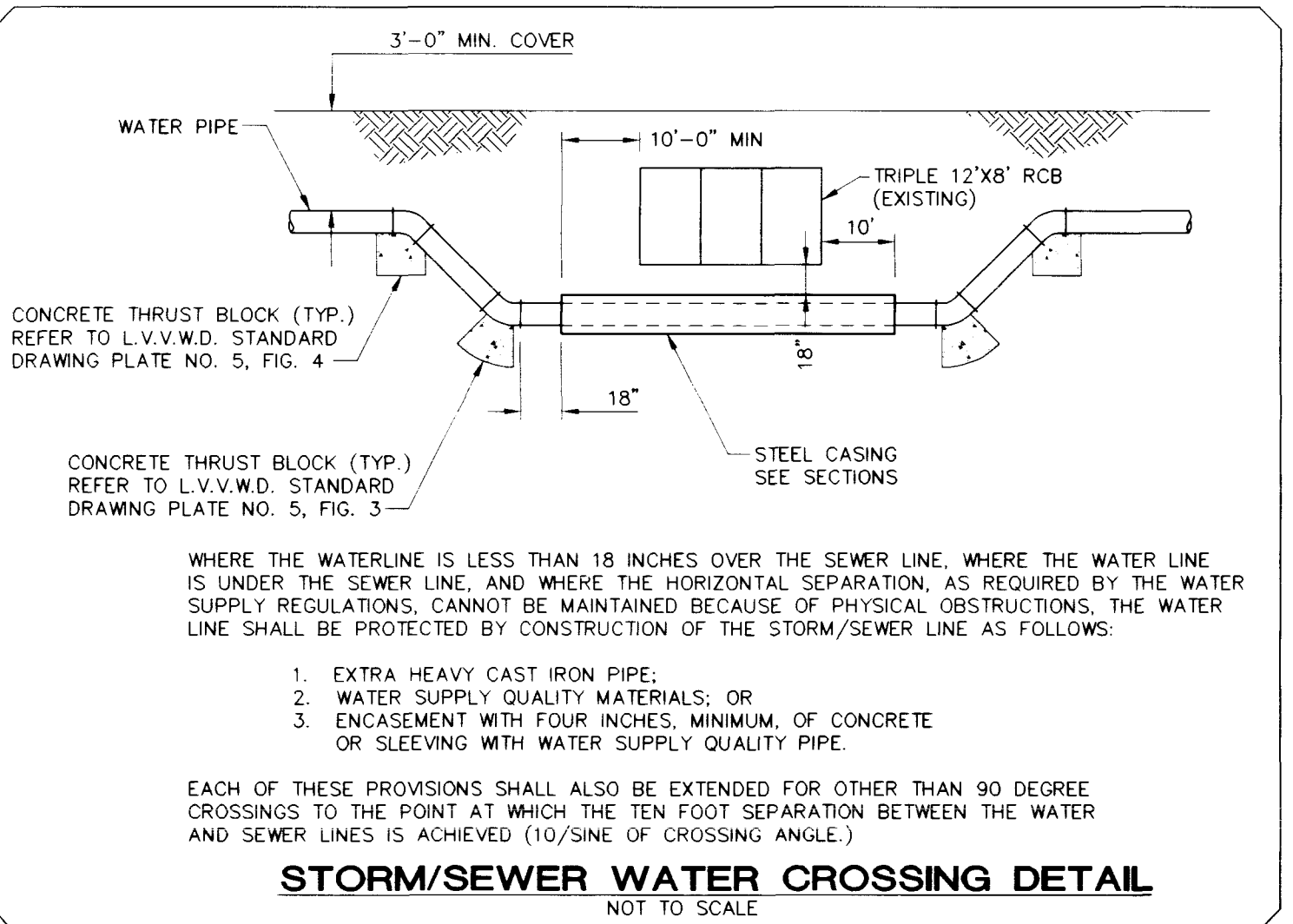
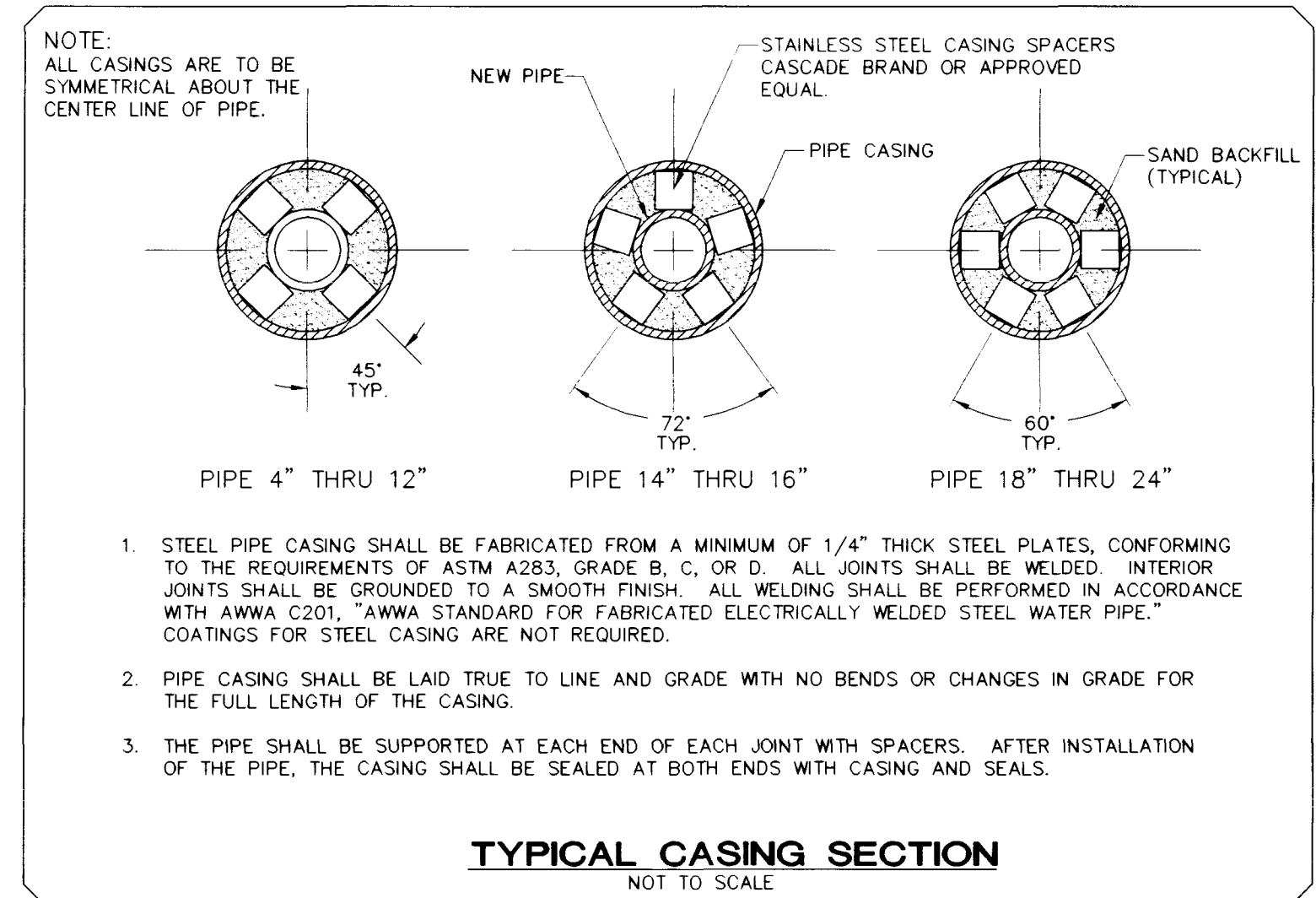
DISCLAIMER NOTE

UTILITY LOCATIONS SHOWN HEREON ARE APPROXIMATE ONLY. IT SHALL BE THE CONTRACTOR'S RESPONSIBILITY TO DETERMINE THE EXACT HORIZONTAL AND VERTICAL LOCATION OF ALL EXISTING UNDERGROUND OR OVERHEAD UTILITIES PRIOR TO COMMENCING CONSTRUCTION. NO REPRESENTATION IS MADE THAT ALL EXISTING UTILITIES ARE SHOWN HEREON. THE ENGINEER ASSUMES NO RESPONSIBILITY FOR UTILITIES NOT SHOWN OR UTILITIES NOT SHOWN IN THEIR PROPER LOCATION.

Avoid cutting underground utility lines. It's costly.
Call before you Dig
 1-800-227-2600
 UNDERGROUND SERVICE (USA)

Avoid overhead power line contact.
Call before you Overhead
 1-702-593-6111
 NEVADA POWER CORPORATION AND SAFETY SERVICES DEPARTMENT

- CONSTRUCTION NOTES**
- CONSTRUCT 2" AC PAVEMENT OVER 12" GRAVEL BASE
 - CONSTRUCT 3" AC PAVEMENT OVER 14" GRAVEL BASE
 - CONSTRUCT ROLL CURB AND GUTTER PER STD. DWG #217A
 - 8" CROSS GUTTER PER STD. DWG #228
 - CONSTRUCT 5' SIDEWALK PER STD. DWG #234
 - INSTALL (3) TYPE IIIA BARRICADES PER STD. DWG NO. 601
 - CONSTRUCT SIDEWALK RAMP PER STD. DWG # 235, CASE I, A=8 AND B=8
 - CONSTRUCT INTERUM GRAVEL ACCESS ROAD PER STD. DWG #209 6" TYPE II OVER 6" TYPE I AGGREGATE BASE.



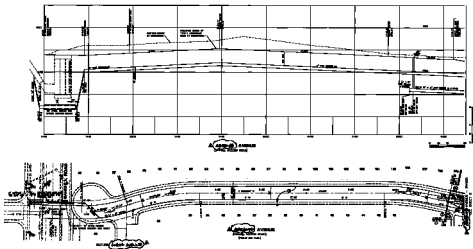
BENCHMARK (N.A.V.D. 88)
 B.M. NO. 26 STATION 0C02 2105WS
 FOUND RIVET AND SQUARE ALUMINUM PLATE IN TOP OF CURB, N NORTHEAST CORNER OF OWENS AVENUE AND LAMB BOULEVARD, NEAR THE PC OF OWENS AVENUE
 ELEVATION = 1792.13 (546.2440m) (NAVD88 DATUM)

ORION ENGINEERING AND SURVEYING, INC.
 2700 CHANDLER AVENUE, SUITE B-1
 LAS VEGAS, NEVADA 89120
 (702) 739-5921, FAX (702) 739-5929

AVENUE WASHINGTON & SANDHILL UNIT 1
 REX & FRAN CALLAWAY FAMILY TRUST
 NEVADA
 CITY OF LAS VEGAS

Orion

SHEET 7
 of 9



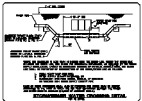
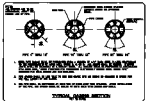
DISCLAIMER NOTICE

THIS DOCUMENT IS UNCLASSIFIED EXCEPT WHERE SHOWN OTHERWISE.

DATE OF DISSEMINATION: 10/10/2010

BY: 60320 UCBAW/DK/STP

- IDENTIFICATION CODES**
- 1. NUMBER OF A NUMBER AND OF SERIAL NO.
 - 2. NUMBER OF A NUMBER AND OF SERIAL NO.
 - 3. NUMBER OF A NUMBER AND OF SERIAL NO.
 - 4. NUMBER OF A NUMBER AND OF SERIAL NO.
 - 5. NUMBER OF A NUMBER AND OF SERIAL NO.
 - 6. NUMBER OF A NUMBER AND OF SERIAL NO.
 - 7. NUMBER OF A NUMBER AND OF SERIAL NO.
 - 8. NUMBER OF A NUMBER AND OF SERIAL NO.
 - 9. NUMBER OF A NUMBER AND OF SERIAL NO.
 - 10. NUMBER OF A NUMBER AND OF SERIAL NO.



ENGINEER: _____

DATE: _____

SCALE: _____



FIGURE 1: TRANSMISSION AND DRIVES - General

ARLINGTON HALLS & MANORIAL

1000 S. FREDERICK STREET

ARLINGTON, VA 22204

ORION

ORION TRANSMISSIONS AND DRIVES - General