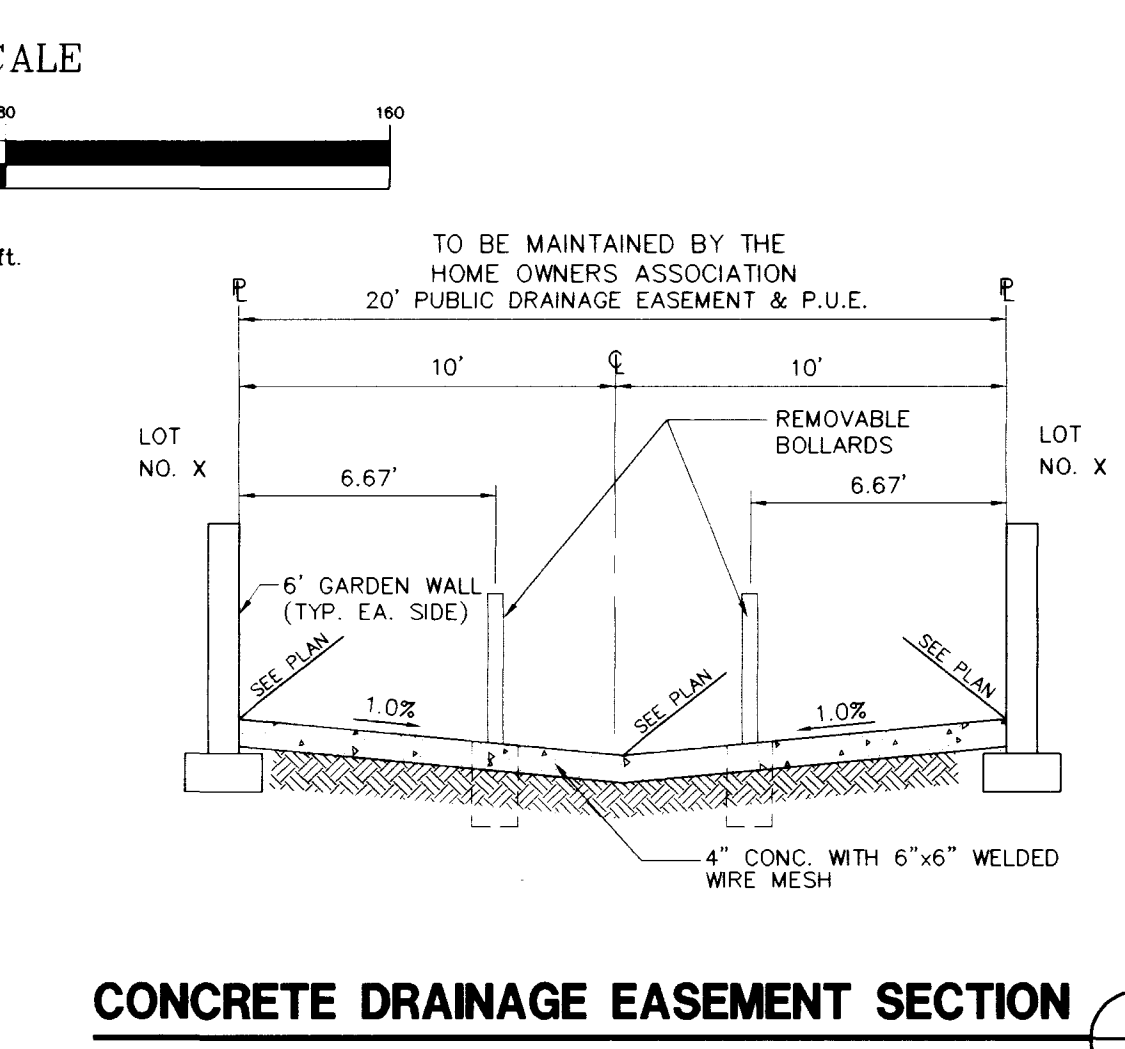
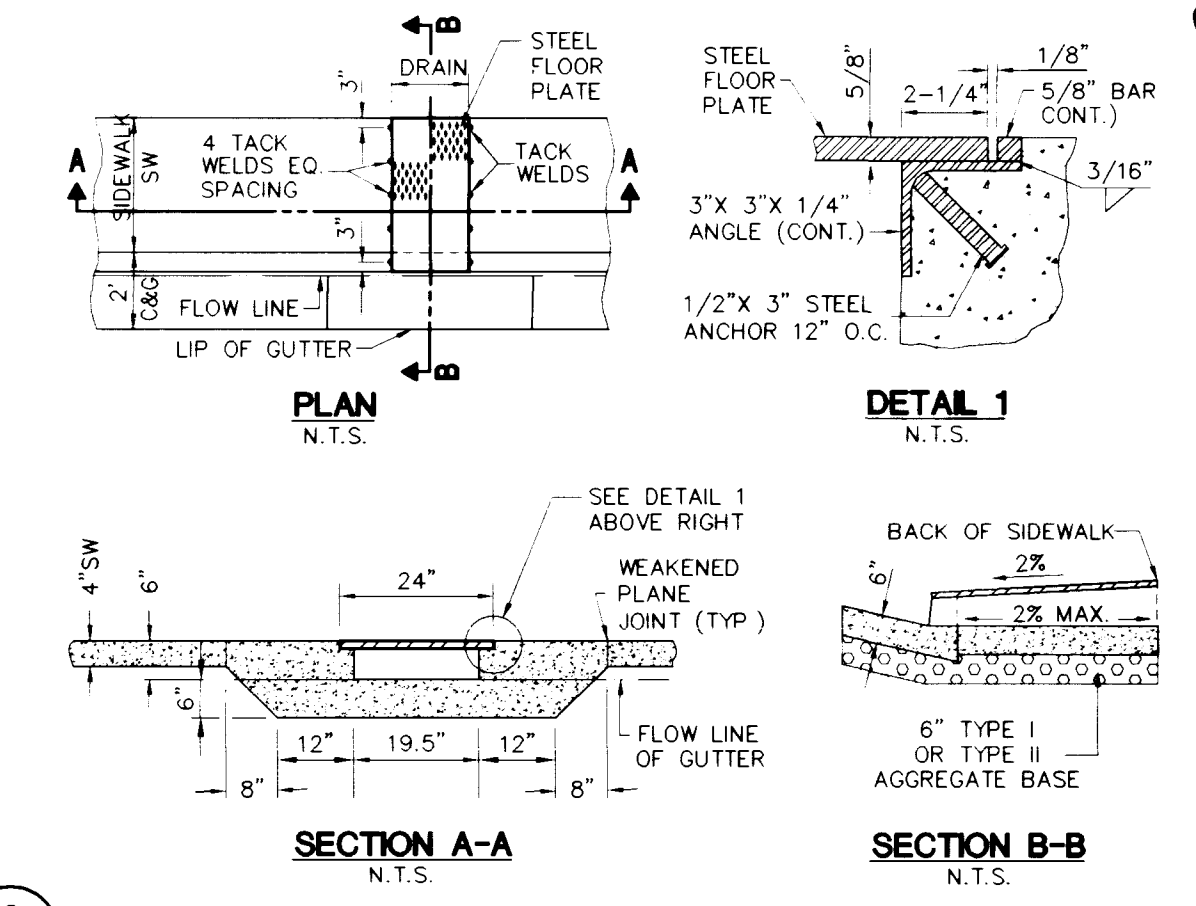
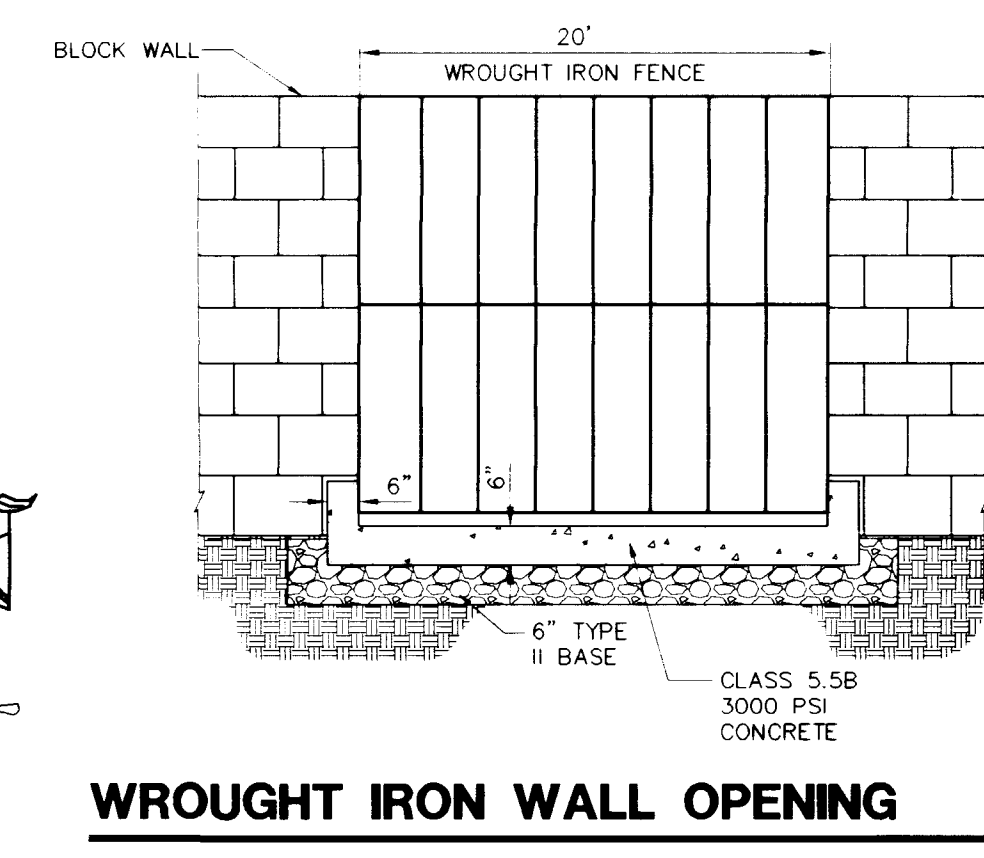
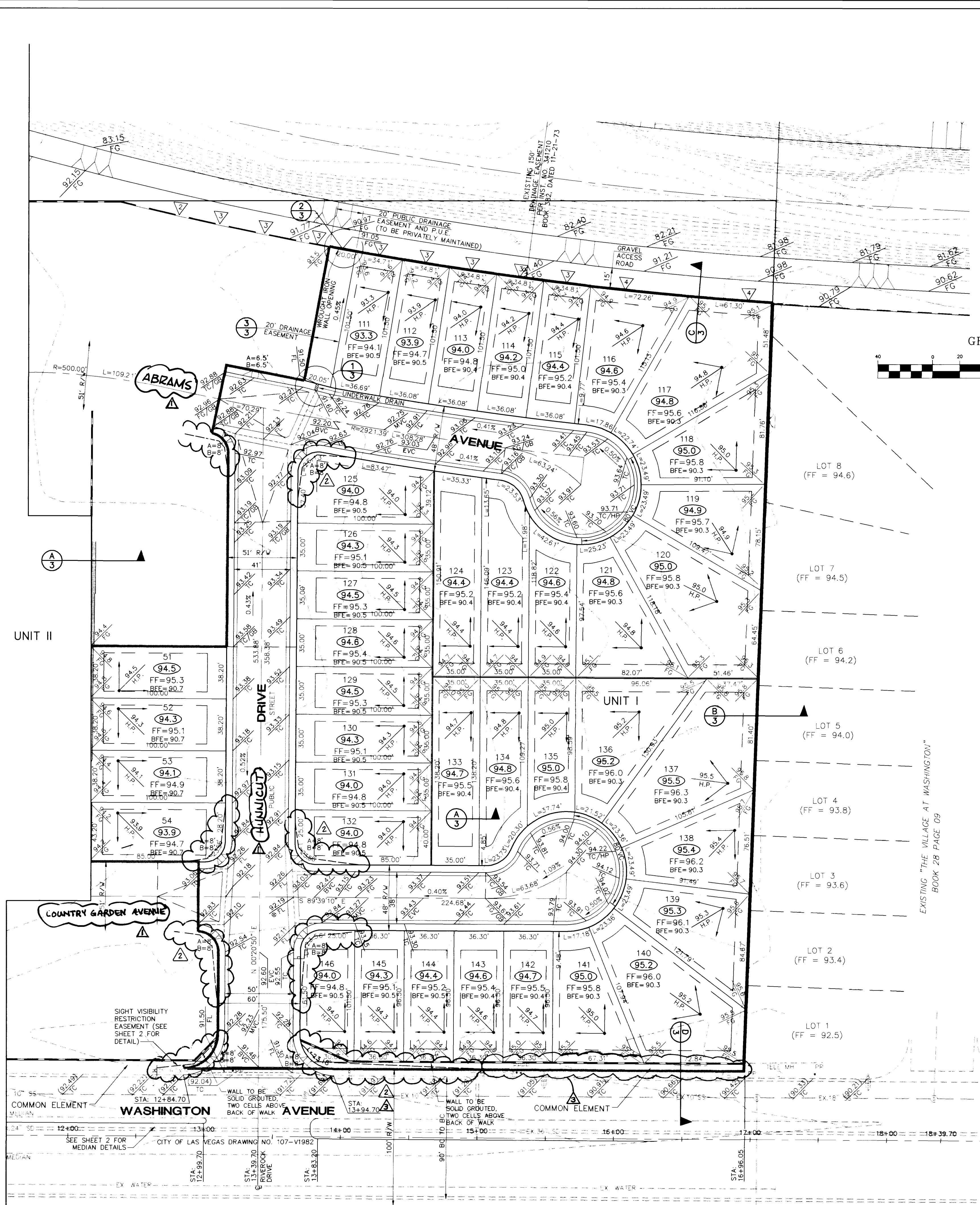


c:\p\m\c\15\20\1601\grading 1.m Apr 07 11:40:04 1996 Plotted by RAY



**NOTES:**

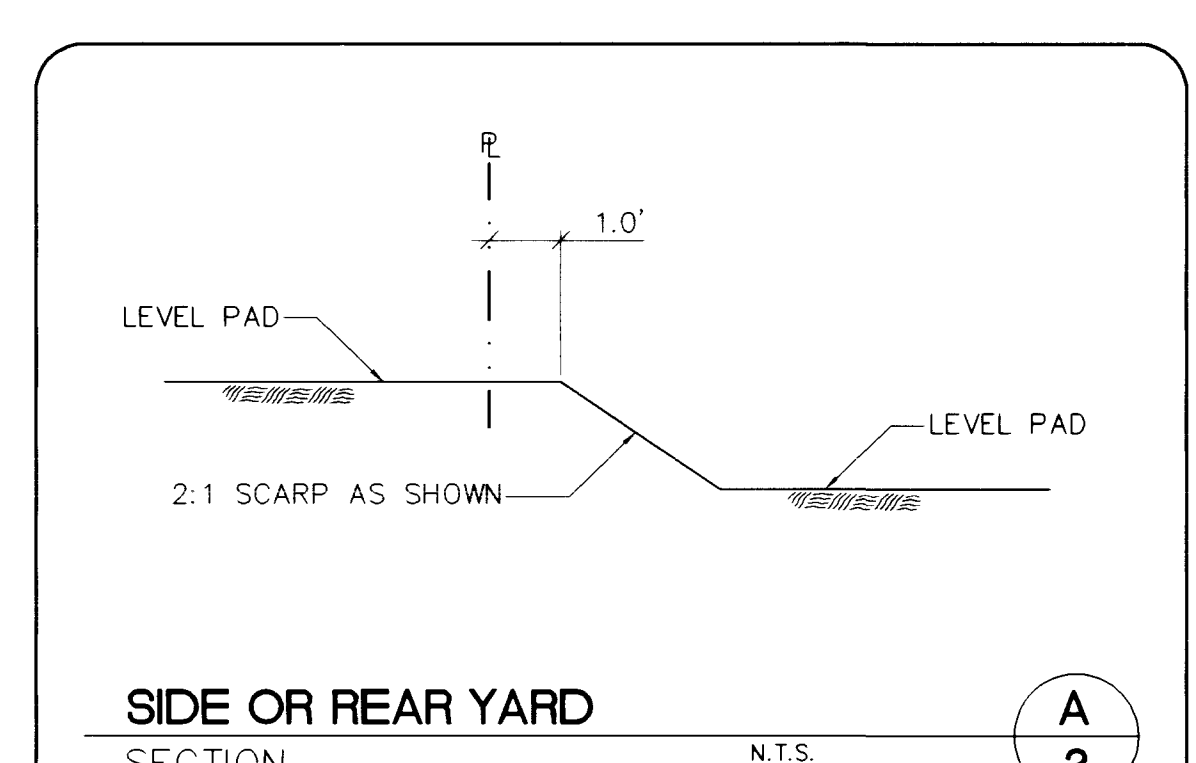
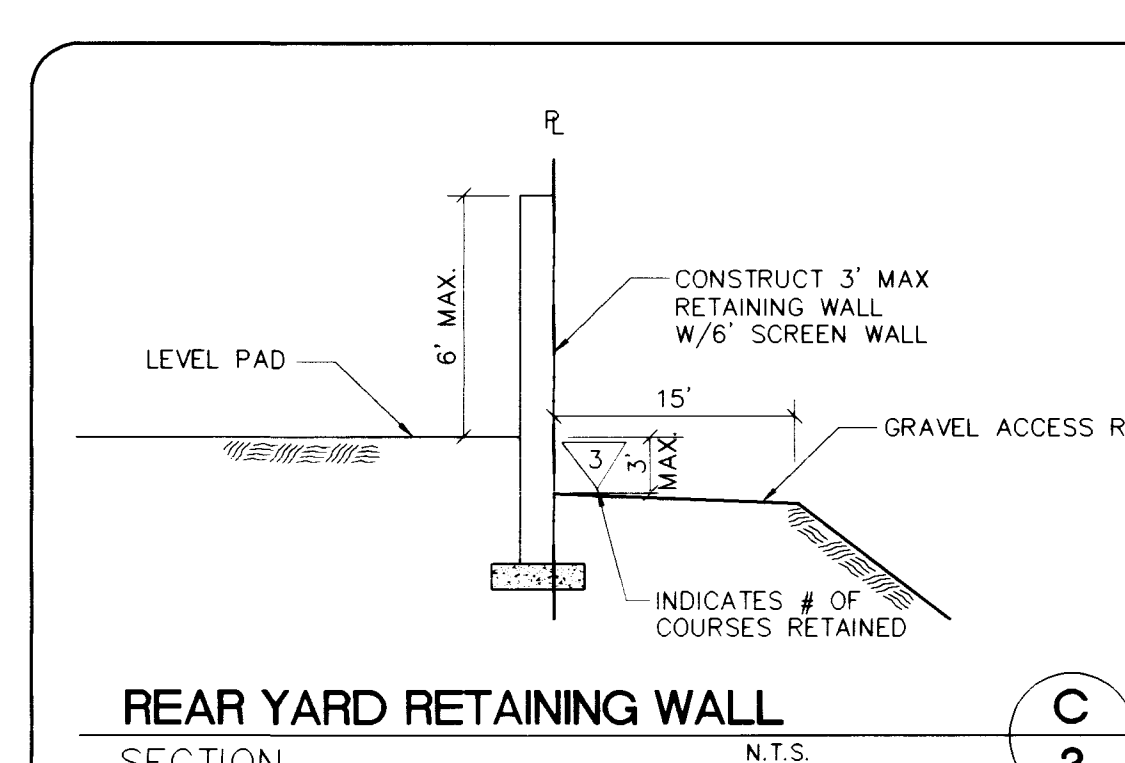
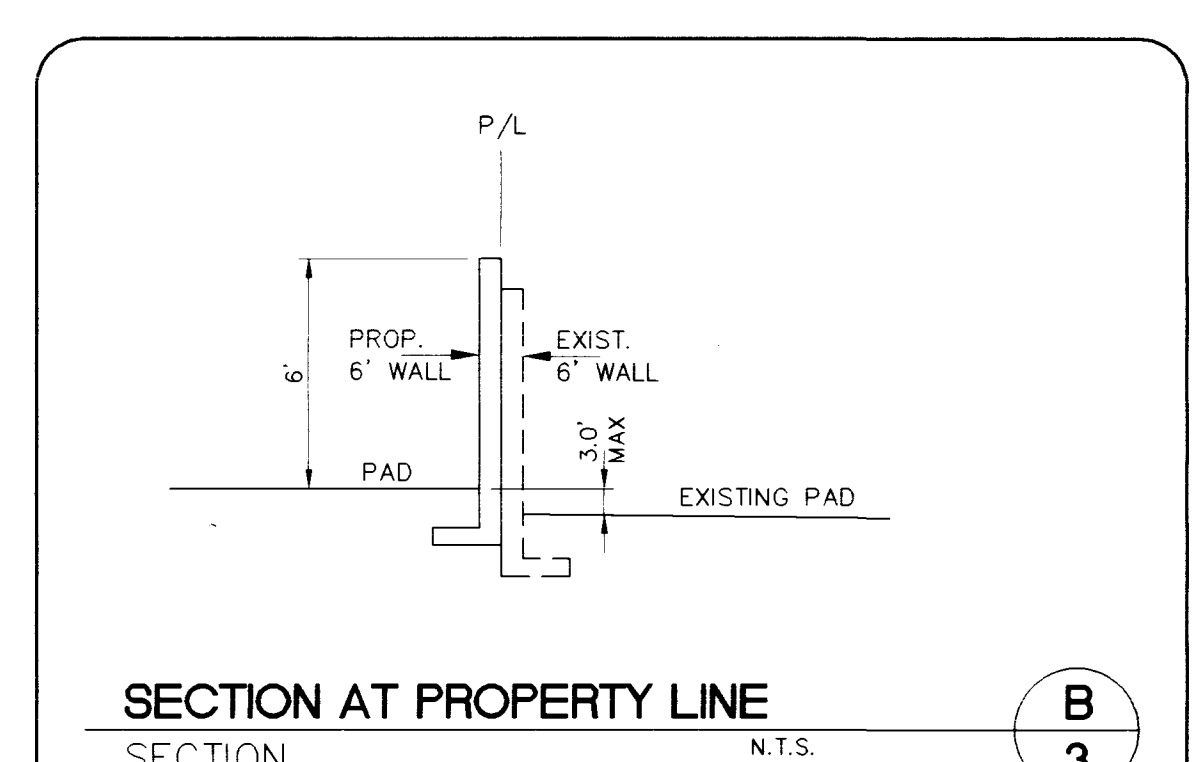
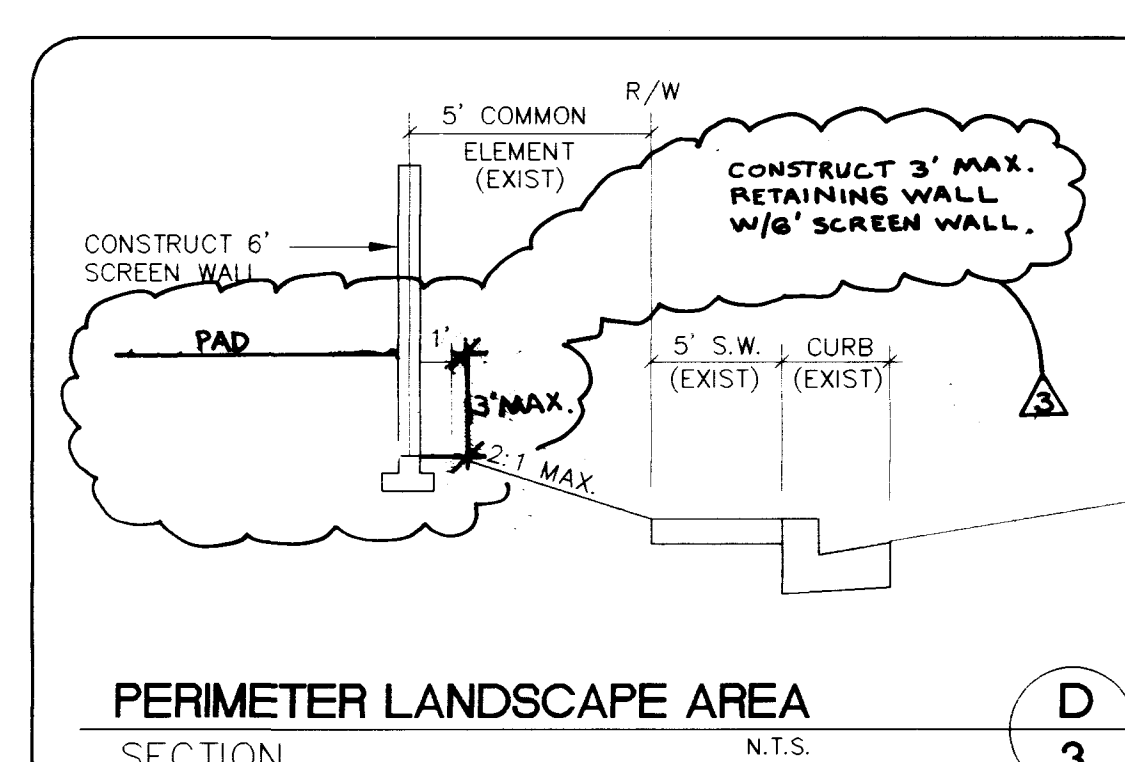
1. IF WIDTH OF PLATE IS GREATER THAN 24", A SPECIAL DESIGN IS REQUIRED.
2. ALL EXPOSED METAL PARTS SHALL BE GALVANIZED AND ALL GALVANIZING DAMAGED BY FABRICATION OR INSTALLATION SHALL RECEIVE TWO COATS OF ALUMINUM PAINT (GALVONOX OR EQUAL).

**DISCLAIMER NOTE**

UTILITY LOCATIONS SHOWN HEREON ARE APPROXIMATE ONLY. IT SHALL BE THE CONTRACTOR'S RESPONSIBILITY TO DETERMINE THE EXACT HORIZONTAL AND VERTICAL LOCATION OF ALL EXISTING UNDERGROUND OR OVERHEAD UTILITIES PRIOR TO COMMENCING CONSTRUCTION. NO REPRESENTATION IS MADE THAT ALL EXISTING UTILITIES ARE SHOWN HEREON. THE ENGINEER ASSUMES NO RESPONSIBILITY FOR UTILITIES NOT SHOWN OR UTILITIES NOT SHOWN IN THEIR PROPER LOCATION.

Avoid cutting underground utility lines. It's costly.  
**before you Dig**  
1-800-227-2600  
UNDERGROUND SERVICE (USA)

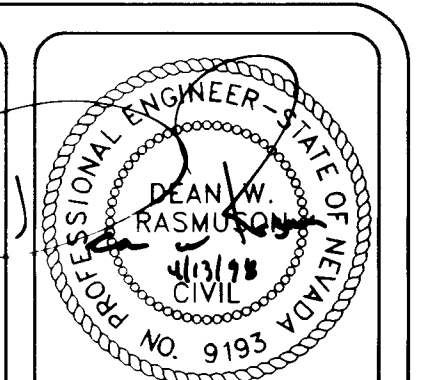
Avoid overhead power line contact.  
**Call before you Overhead**  
1-702-593-6111  
NEVADA POWER TRANSMISSION AND SAFETY SERVICES DEPARTMENT



**BENCHMARK** (N.A.V.D. 88)  
B.M. NO. 26 STATION 0022 210SW5  
FOUND RIVET AND SQUARE ALUMINUM PLATE IN TOP OF CURB, N NORTHEAST CORNER OF OWENS AVENUE AND LAMB BOULEVARD, NEAR THE PC OF OWENS AVENUE  
ELEVATION = 1792.13 (546.2440m) (NAV88 DATUM)

**DRAINAGE STUDY NOTE**

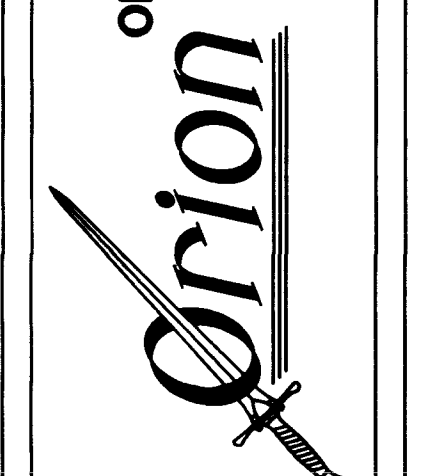
I CERTIFY THAT THIS GRADING PLAN IS IN CONFORMANCE WITH THE APPROVED DRAINAGE STUDY ON FILE AT THE CITY OF LAS VEGAS FOR THIS PROJECT.



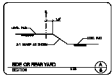
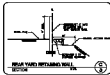
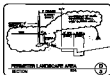
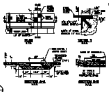
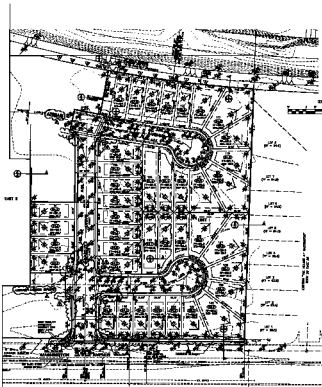
DESIGNED BY: DATE: DRAWN BY: DATE: JOB NUMBER: 020-6001  
CHECKED BY: REVISION: BY: DATE: PERMITS: 5/17/98  
NO. 4 REVISE SHEET NOTES PER FINAL MAP 5/17/98  
ADD SIZES TO MATCH P.L.M. DEP 5/28/98  
REVISE WALL SECTIONS-Detail B.D. 5/28/98

GRADING PLAN  
WASHINGTON & SANDHILL  
UNIT 1  
REX & FRAN CALLAWAY FAMILY TRUST  
CITY OF LAS VEGAS, NEVADA

ORION ENGINEERING AND SURVEYING, INC.  
2700 CHANDLER AVENUE, SUITE B-1  
LAS VEGAS, NEVADA 89120  
(702) 739-5921 FAX (702) 739-5929



SHEET 3  
of 9



PROJECT NO. 1077-1080-1  
DATE: 10/1/77  
SCALE: AS SHOWN  
SHEET NO. 1 OF 1

DRAWING PLAN  
FOUNDATION & GENERAL  
NOT 1  
SITE & FRONT COURTESY FURNISHING  
10/1/77

ORION  
ORION CONSULTING AND ARCHITECTURE, INC.  
ONE PALMVIEW PLACE, PALM BEACH, FLORIDA 33480  
TELEPHONE (407) 851-1111

1077-1080-1